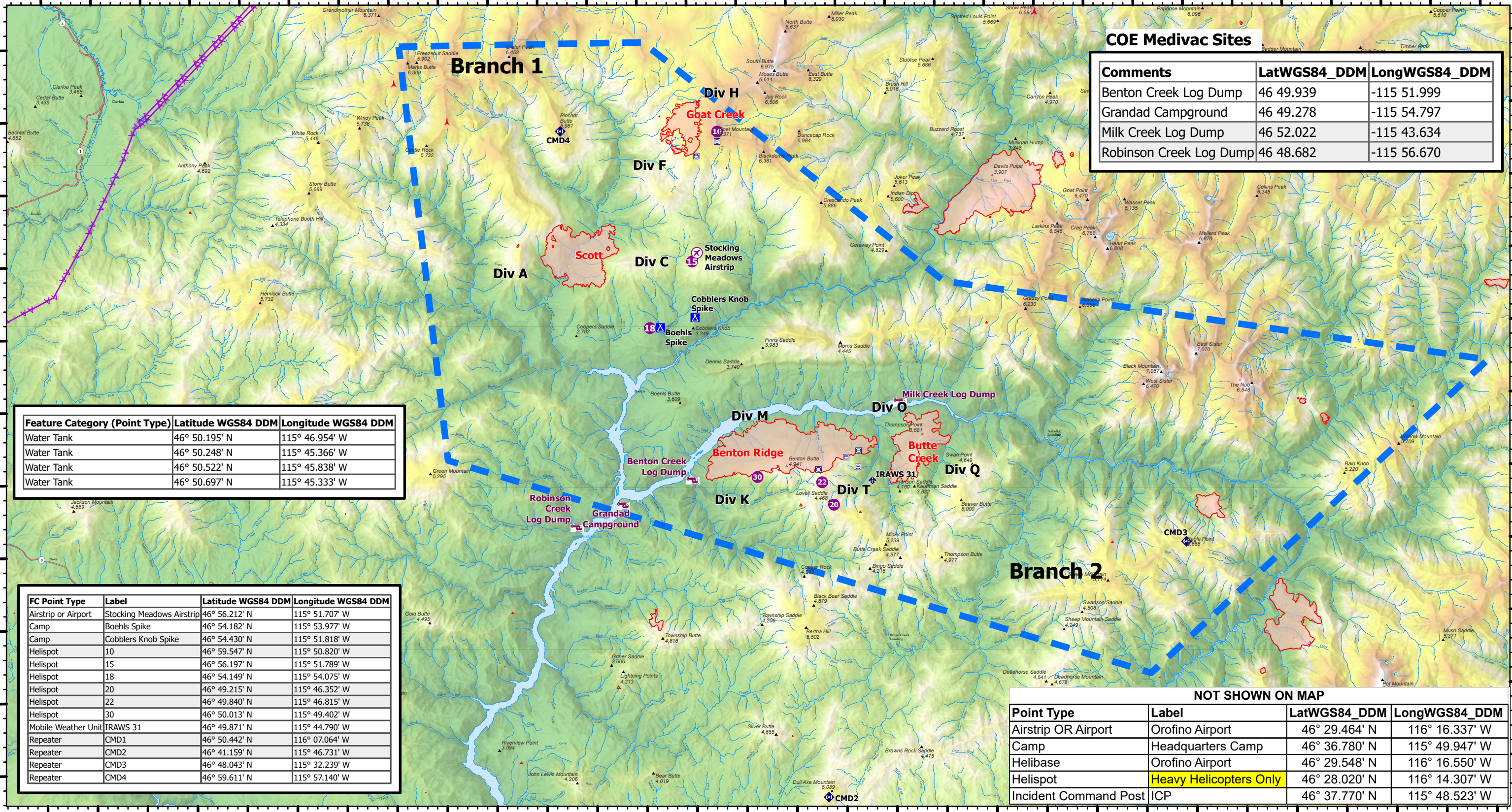


116°16'W 116°12'W 116°8'W 116°4'W 116°W 115°56'W 115°52'W 115°48'W 115°44'W 115°40'W 115°36.01'W 115°32'W 115°28'W 115°24'W 115°20'W

47°N
46°56'N
46°52'N
46°48'N
46°44'N

47°N
46°56'N
46°52'N
46°48'N
46°44'N



COE Medivac Sites		
Comments	LatWGS84_DDM	LongWGS84_DDM
Benton Creek Log Dump	46 49.939	-115 51.999
Grandad Campground	46 49.278	-115 54.797
Milk Creek Log Dump	46 52.022	-115 43.634
Robinson Creek Log Dump	46 48.682	-115 56.670

Feature Category (Point Type)	Latitude WGS84 DDM	Longitude WGS84 DDM
Water Tank	46° 50.195' N	115° 46.954' W
Water Tank	46° 50.248' N	115° 45.366' W
Water Tank	46° 50.522' N	115° 45.838' W
Water Tank	46° 50.697' N	115° 45.333' W

FC Point Type	Label	Latitude WGS84 DDM	Longitude WGS84 DDM
Airstrip or Airport	Stocking Meadows Airstrip	46° 56.212' N	115° 51.707' W
Camp	Boehls Spike	46° 54.182' N	115° 53.977' W
Camp	Cobblers Knob Spike	46° 54.430' N	115° 51.818' W
Helispot	10	46° 59.547' N	115° 50.820' W
Helispot	15	46° 56.197' N	115° 51.789' W
Helispot	18	46° 54.149' N	115° 54.075' W
Helispot	20	46° 49.215' N	115° 46.352' W
Helispot	22	46° 49.840' N	115° 46.815' W
Helispot	30	46° 50.013' N	115° 49.402' W
Mobile Weather Unit	IRAWS 31	46° 49.871' N	115° 44.790' W
Repeater	CMD1	46° 50.442' N	116° 07.064' W
Repeater	CMD2	46° 41.159' N	115° 46.731' W
Repeater	CMD3	46° 48.043' N	115° 32.239' W
Repeater	CMD4	46° 59.611' N	115° 57.140' W

NOT SHOWN ON MAP			
Point Type	Label	LatWGS84_DDM	LongWGS84_DDM
Airstrip OR Airport	Orofino Airport	46° 29.464' N	116° 16.337' W
Camp	Headquarters Camp	46° 36.780' N	115° 49.947' W
Helibase	Orofino Airport	46° 29.548' N	116° 16.550' W
Helispot	Heavy Helicopters Only	46° 28.020' N	116° 14.307' W
Incident Command Post	ICP	46° 37.770' N	115° 48.523' W

Air Ops
Air Operations
 Cougar Rock Complex
 ID-CTS-000623
 8/5/2021
 8,079 acres
 as of 8/3/2021, 0030 Hrs



- 🚑 Army Corps of Engineers MEDIVAC
- 📶 Mobile Weather Unit
- 🚧 Temporary Flight Restriction
- ✈️ Airstrip or Airport
- 📶 Repeater
- ⚡ PowerLines
- 📍 Helispot
- 🏰 Tower 30' - 200'
- 🚒 Wildfire Daily Fire Perimeter
- 🏠 Camp
- 🏰 Tower > 200'
- 🌊 Stream/River
- 📍 Helispot
- 🏰 Towers of Unknown Height
- 🌊 Stream/River Intermittent
- 🏠 Camp
- 📶 Water Tank
- 🌊 Lake / Pond

7,914 ft
833 ft

0 2 4 6
Nautical Miles

