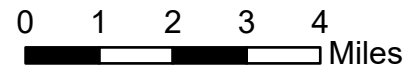
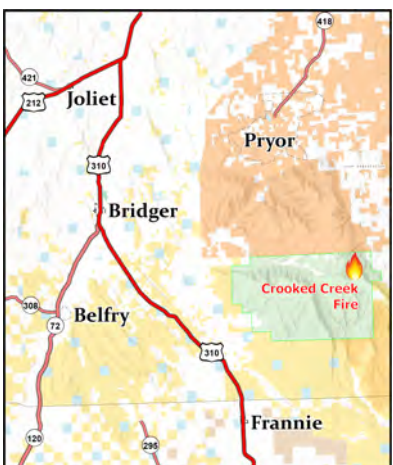


Transportation

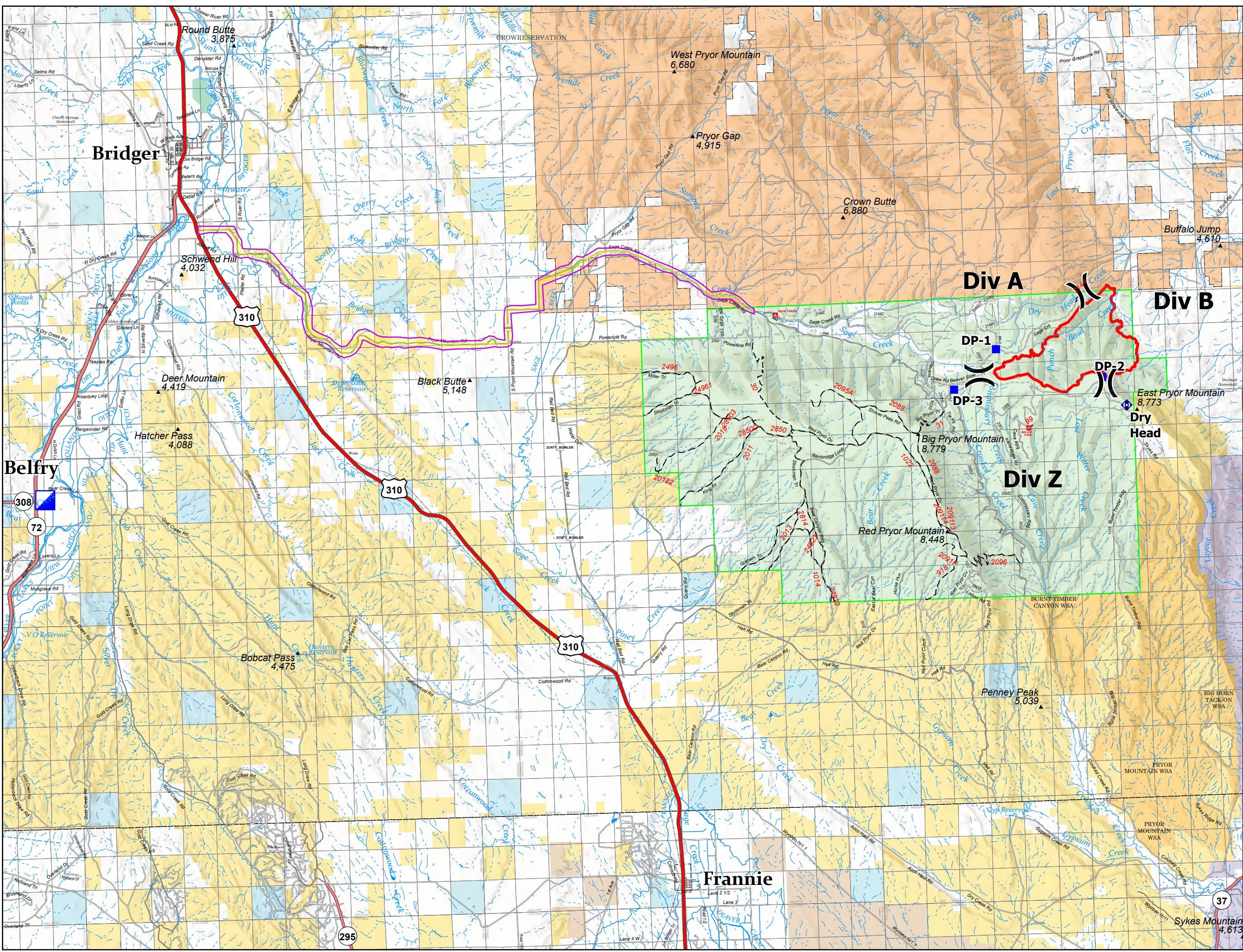
Crooked Creek
MT BID - 210154
06/20/2021



- (X) Division Break
- Incident Command Post
- Drop Point
- ◆ Repeater
- ▭ Wildfire Daily Fire Perimeter
- ▬ US Primary Route
- ▬ State Primary Route
- ▬ State Secondary Route
- ▬ Paved Roads
- ▬ Dirt (Not Paved)
- ▭ Forest Service Land
- ▭ State Public Lands
- ▭ U.S. Fish & Wildlife Service Lands
- ▭ Bureau of Land Management Lands
- ▭ National Park Service Lands
- ▭ Other Federal Lands
- ▭ American Indian Reservation Boundary
- ▭ American Indian Reservation Land
- ▭ Primary Access Route Highlighted - Pryor Mtn Road & Sage Creek Road



Team 4



37

295