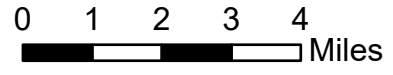
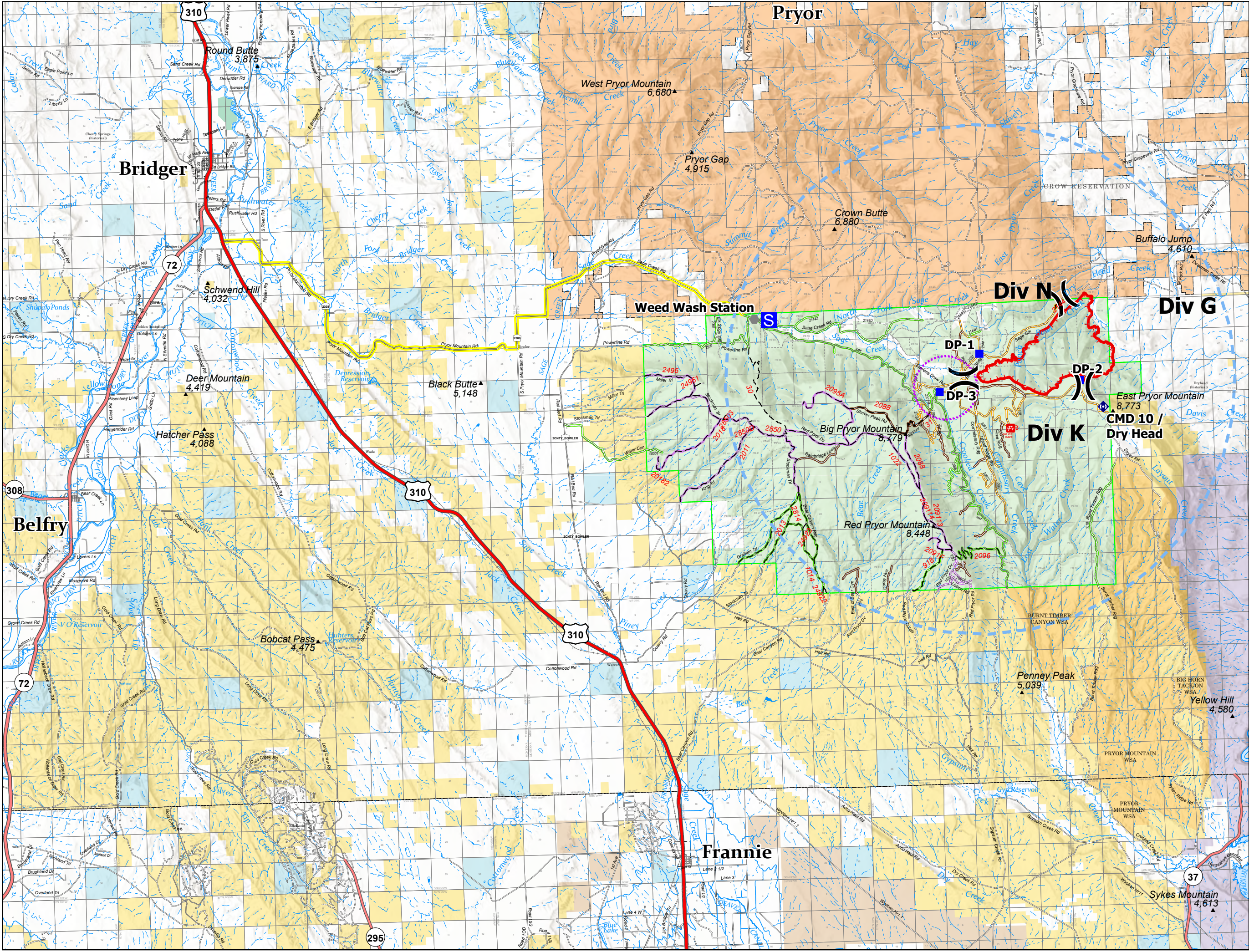
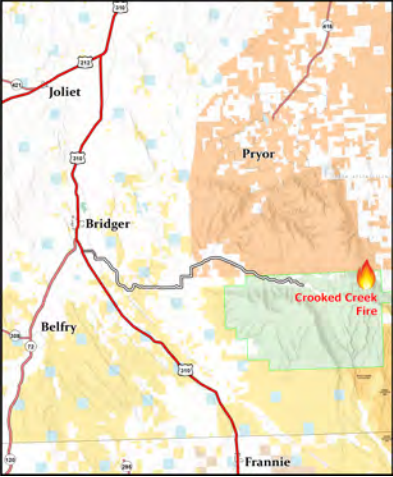


Transportation

Crooked Creek
MT BID - 210154
06/22/2021



- () Division Break
- Drop Point
- Staging Area
- Other
- Ⓜ Repeater
- ▭ UAS Launch and Recovery Zone
- ▭ Temporary Flight Restriction
- ▭ Fire Edge
- ▭ Wildfire Daily Fire Perimeter
- ▭ US Primary Route
- ▭ State Primary Route
- ▭ State Secondary Route
- ▭ Paved Roads
- ▭ Dirt (Not Paved)
- ▭ Forest Service Land
- ▭ State Public Lands
- ▭ U.S. Fish & Wildlife Service Lands
- ▭ Bureau of Land Management Lands
- ▭ National Park Service Lands
- ▭ Other Federal Lands
- ▭ American Indian Reservation Boundary
- ▭ American Indian Reservation Land
- ▭ Close Yearlong
- ▭ Open Yearlong
- ▭ Seasonal Designation 5/22 - 4/15
- ▭ Trail Open to OHV
- ▭ Primary Access Route



Team 4