

# Transportation

Crooked Creek  
 MT BID - 210154  
 06/22/2021



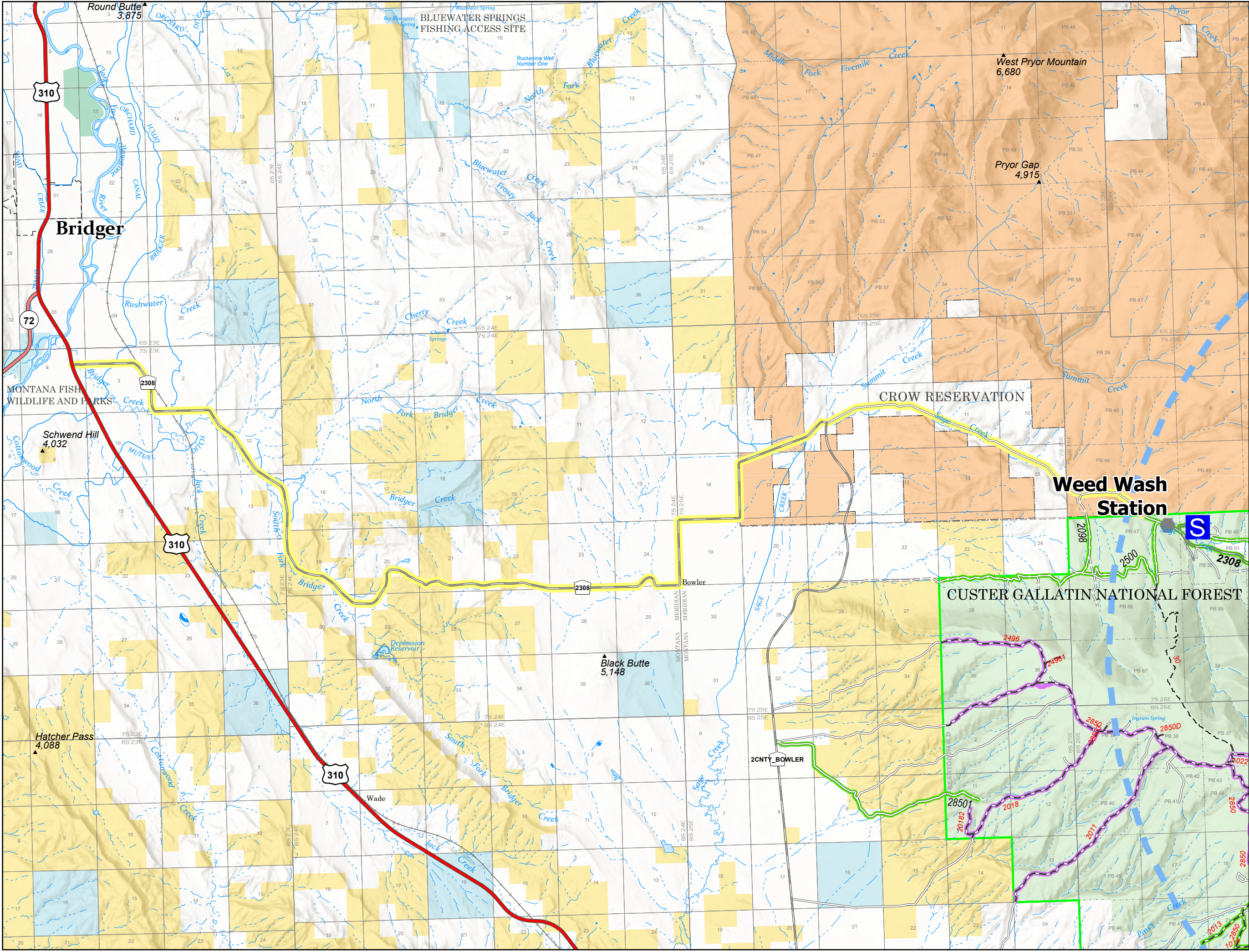
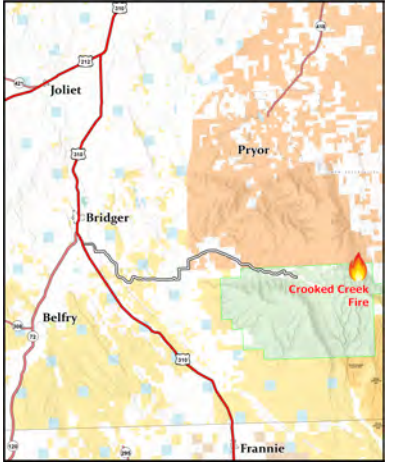
0 1/2 1 1 1/2 2 Miles

## Bridger to Crooked Creek Fire

## US 310 & Pryor Mtn Road to Sage Creek Road

## Staging area at Sage Cr Campground (FS Road 2083)

- S Staging Area
- Other
- Temporary Flight Restriction
- US Primary Route
- State Primary Route
- Forest Service Land
- State Public Lands
- U.S. Fish & Wildlife Service Lands
- Bureau of Land Management Lands
- American Indian Reservation Boundary
- American Indian Reservation Land
- Open Yearlong
- Primary Access Route
- Trail Open to OHV



Team 4