

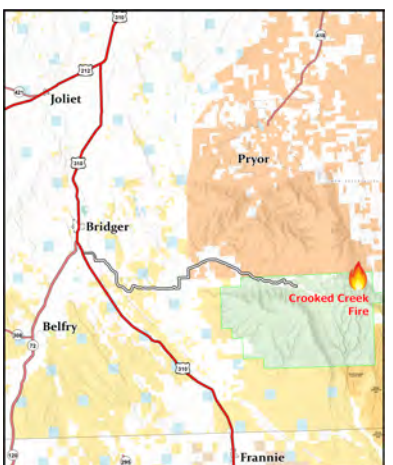
# Transportation

Crooked Creek  
MT BID - 210154  
06/22/2021



0 1/2 1 1 1/2 2 Miles

- ( ) Division Break
- Drop Point
- S Staging Area
- Other
- ⬢ Repeater
- ⬢ UAS Launch and Recovery Zone
- ⬢ Temporary Flight Restriction
- ⬢ Fire Edge
- Paved Roads
- Dirt (Not Paved)
- Forest Service Land
- State Public Lands
- Bureau of Land Management Lands
- American Indian Reservation Boundary
- American Indian Reservation Land
- Close Yearlong
- Open Yearlong
- Primary Access Route
- Seasonal Designation 5/22 - 4/15
- Trail Open to OHV



Team 4

