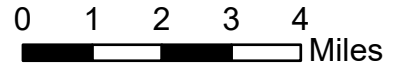
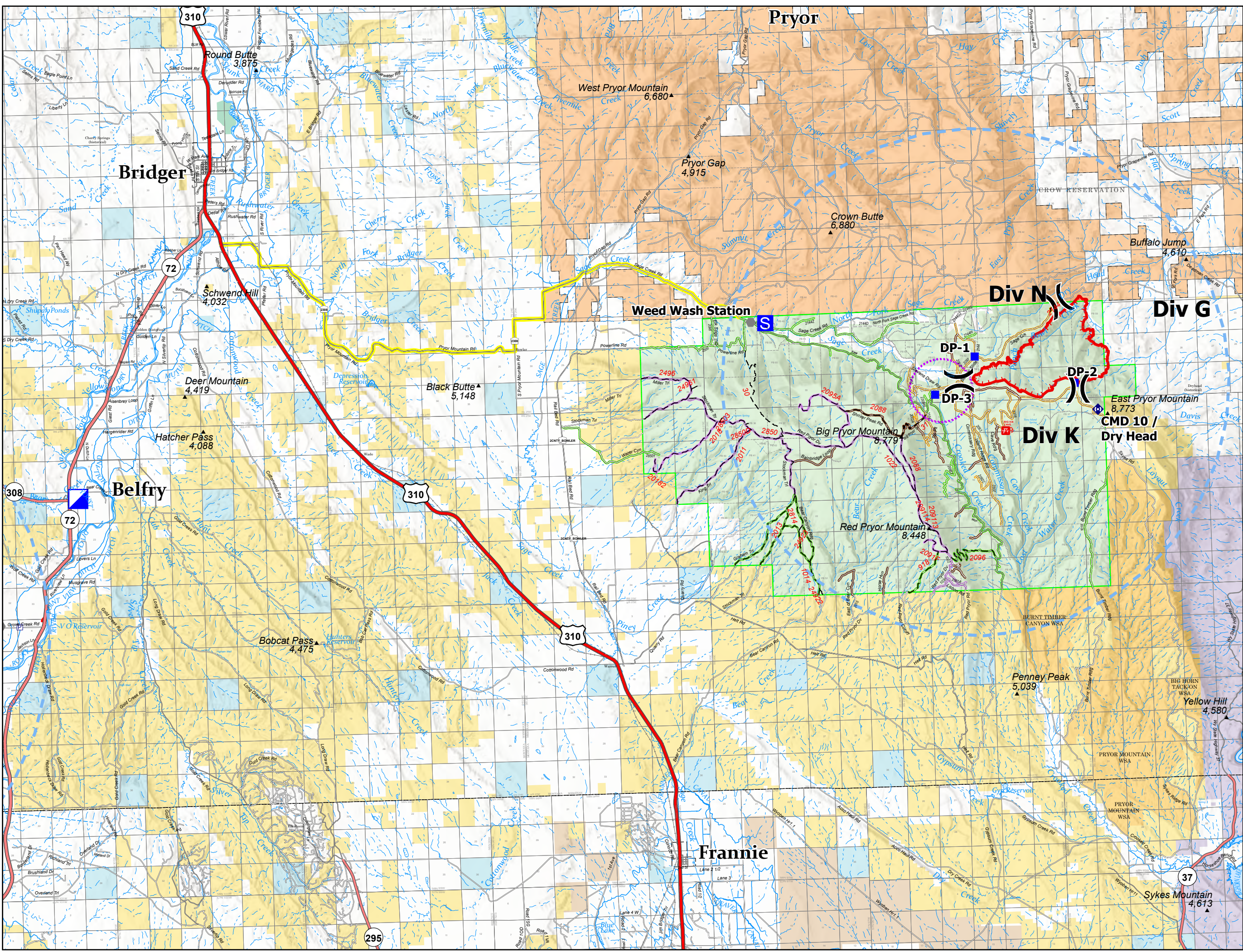
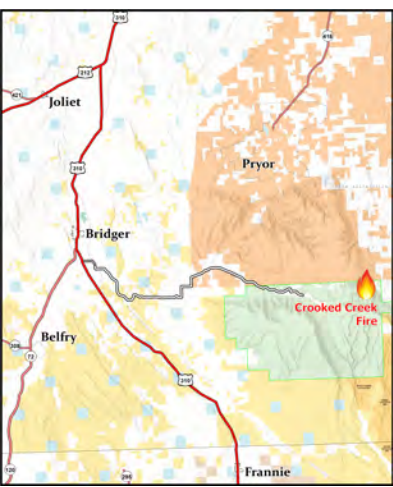


Transportation

Crooked Creek
MT BID - 210154
06/23/2021



- () Division Break
- ▣ Incident Command Post
- Drop Point
- Ⓢ Staging Area
- Other
- Ⓢ Repeater
- ▨ UAS Launch and Recovery Zone
- ▨ Temporary Flight Restriction
- ▨ Fire Edge
- ▨ Wildfire Daily Fire Perimeter
- ▨ US Primary Route
- ▨ State Primary Route
- ▨ State Secondary Route
- ▨ Paved Roads
- ▨ Dirt (Not Paved)
- ▨ Forest Service Land
- ▨ State Public Lands
- ▨ U.S. Fish & Wildlife Service Lands
- ▨ Bureau of Land Management Lands
- ▨ National Park Service Lands
- ▨ Other Federal Lands
- ▨ American Indian Reservation Boundary
- ▨ American Indian Reservation Land
- ▨ Close Yearlong
- ▨ Open Yearlong
- ▨ Seasonal Designation 5/22 - 4/15
- ▨ Trail Open to OHV
- ▨ Primary Access Route



Team 4