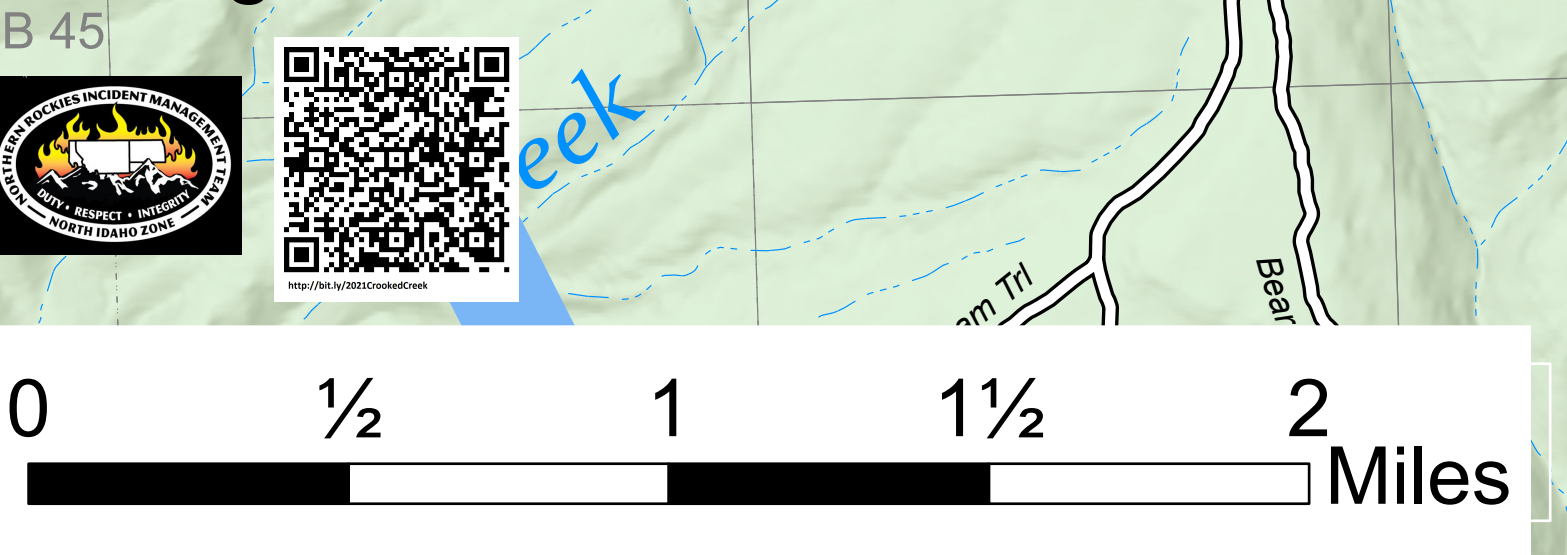
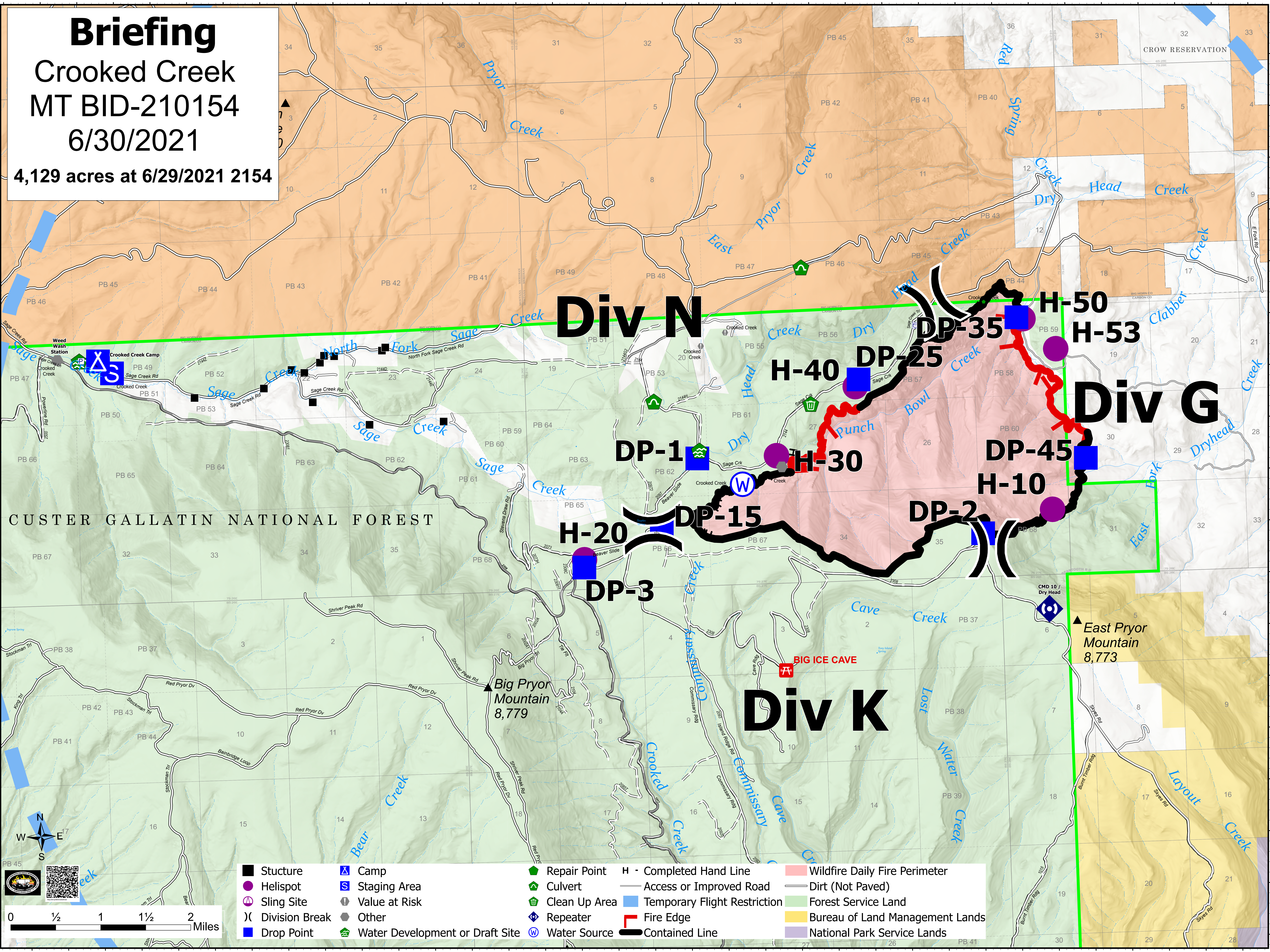


**Briefing**  
**Crooked Creek**  
**MT BID-210154**  
**6/30/2021**  
**4,129 acres at 6/29/2021 2154**



Stucture	Camp	Repair Point	H - Completed Hand Line	Wildfire Daily Fire Perimeter
Helispot	Staging Area	Culvert	Access or Improved Road	Temporary Flight Restriction
Sling Site	Value at Risk	Clean Up Area	Dirt (Not Paved)	Forest Service Land
Division Break	Other	Repeater	Fire Edge	Bureau of Land Management Lands
Drop Point	Water Development or Draft Site	Water Source	Contained Line	National Park Service Lands