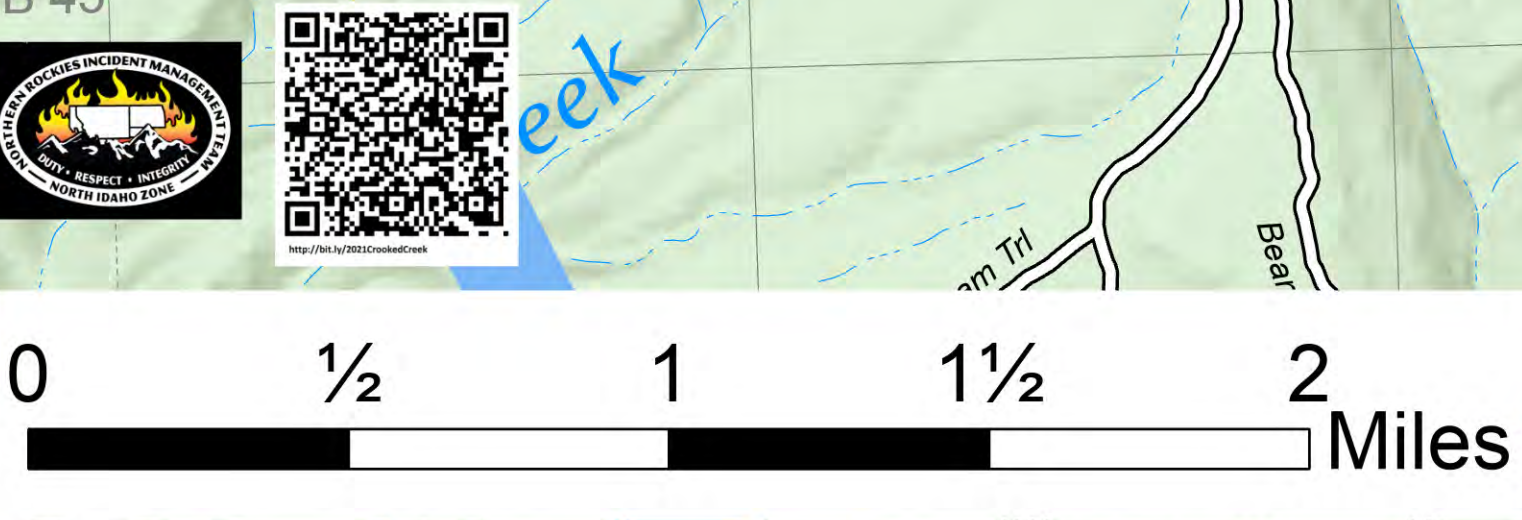
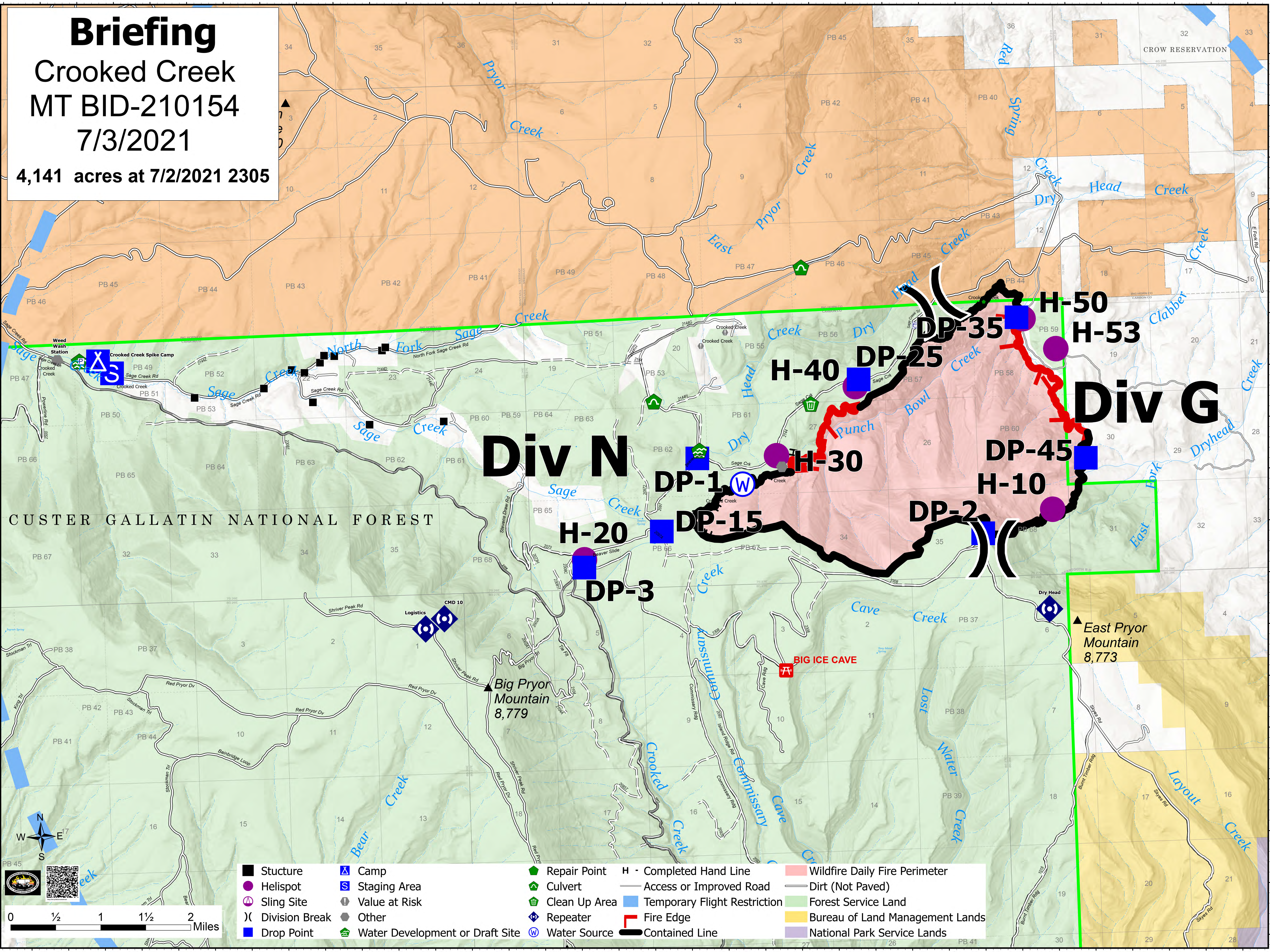


Briefing
Crooked Creek
MT BID-210154
7/3/2021
4,141 acres at 7/2/2021 2305



Structure	Camp	Repair Point	H - Completed Hand Line	Wildfire Daily Fire Perimeter
Helispot	Staging Area	Culvert	Access or Improved Road	Forest Service Land
Sling Site	Value at Risk	Clean Up Area	Temporary Flight Restriction	Bureau of Land Management Lands
Division Break	Other	Repeater	Fire Edge	National Park Service Lands
Drop Point	Water Development or Draft Site	Water Source	Contained Line	