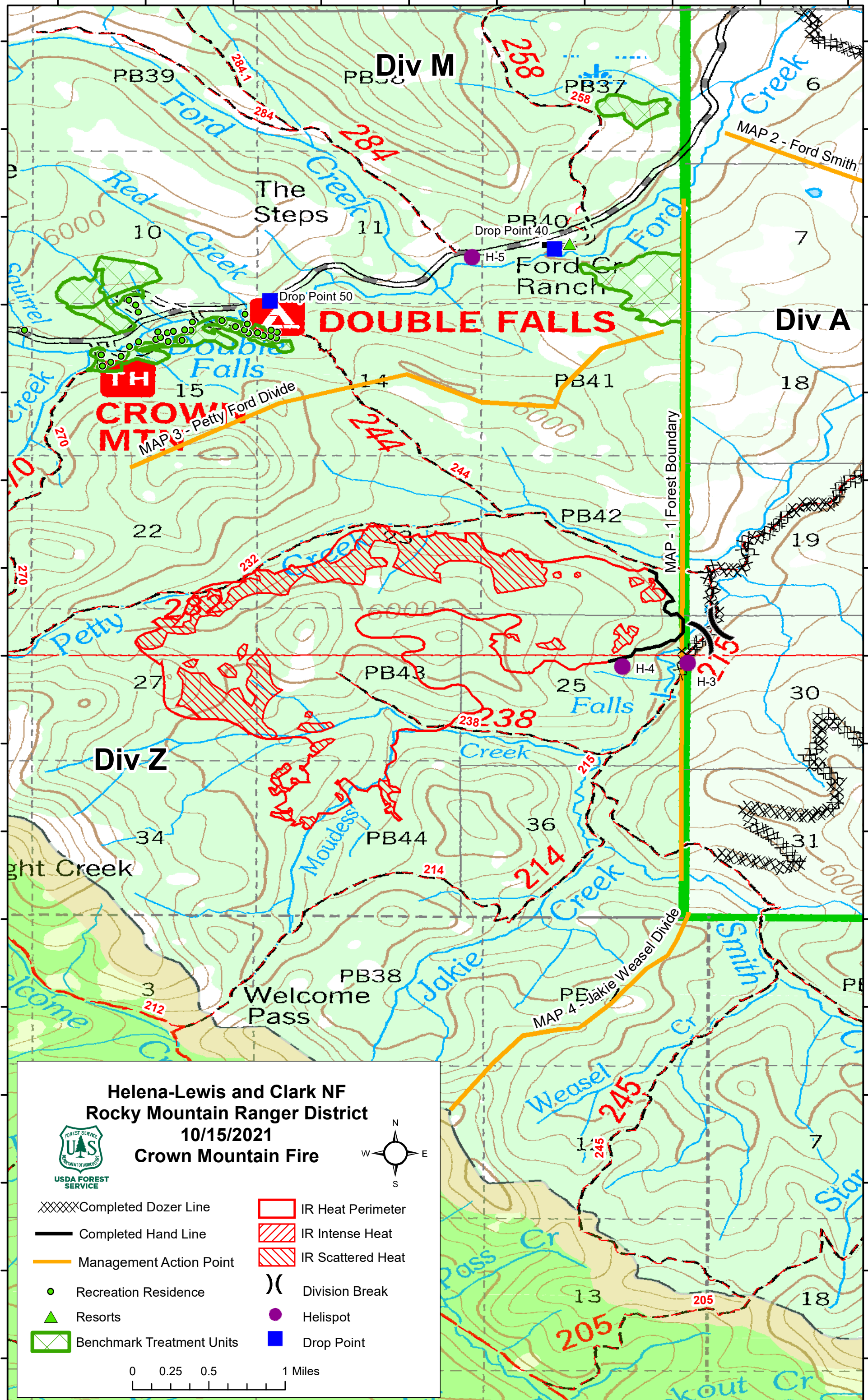


112°44'30"W 112°44'0"W 112°43'30"W 112°43'0"W 112°42'30"W 112°42'0"W 112°41'30"W 112°41'0"W 112°40'30"W 112°40'0"W

47°26'0"N  
47°25'30"N  
47°25'0"N  
47°24'30"N  
47°24'0"N  
47°23'30"N  
47°23'0"N  
47°22'30"N  
47°22'0"N  
47°21'30"N  
47°21'0"N  
47°20'30"N  
47°20'0"N  
47°19'30"N  
47°19'0"N  
47°18'30"N

47°26'0"N  
47°25'30"N  
47°25'0"N  
47°24'30"N  
47°24'0"N  
47°23'30"N  
47°23'0"N  
47°22'30"N  
47°22'0"N  
47°21'30"N  
47°21'0"N  
47°20'30"N  
47°20'0"N  
47°19'30"N  
47°19'0"N  
47°18'30"N



Div M

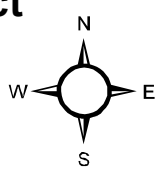
Div A

Div Z

**DOUBLE FALLS**

**CROWN MOUNTAIN**

**Helena-Lewis and Clark NF**  
**Rocky Mountain Ranger District**  
10/15/2021  
**Crown Mountain Fire**



- XXXXX Completed Dozer Line
- Completed Hand Line
- Management Action Point
- Recreation Residence
- ▲ Resorts
- Benchmark Treatment Units
- IR Heat Perimeter
- ▨ IR Intense Heat
- ▨ IR Scattered Heat
- ) ( Division Break
- Helispot
- Drop Point

0 0.25 0.5 1 Miles

112°44'30"W 112°44'0"W 112°43'30"W 112°43'0"W 112°42'30"W 112°42'0"W 112°41'30"W 112°41'0"W 112°40'30"W 112°40'0"W