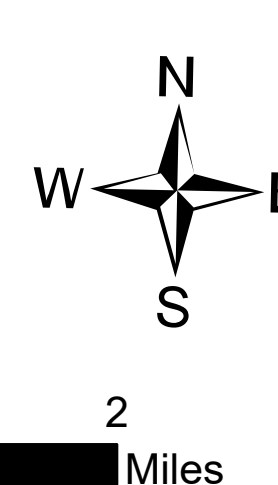
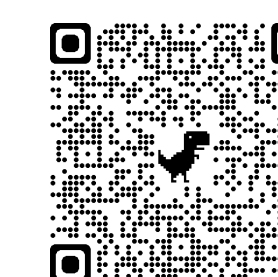

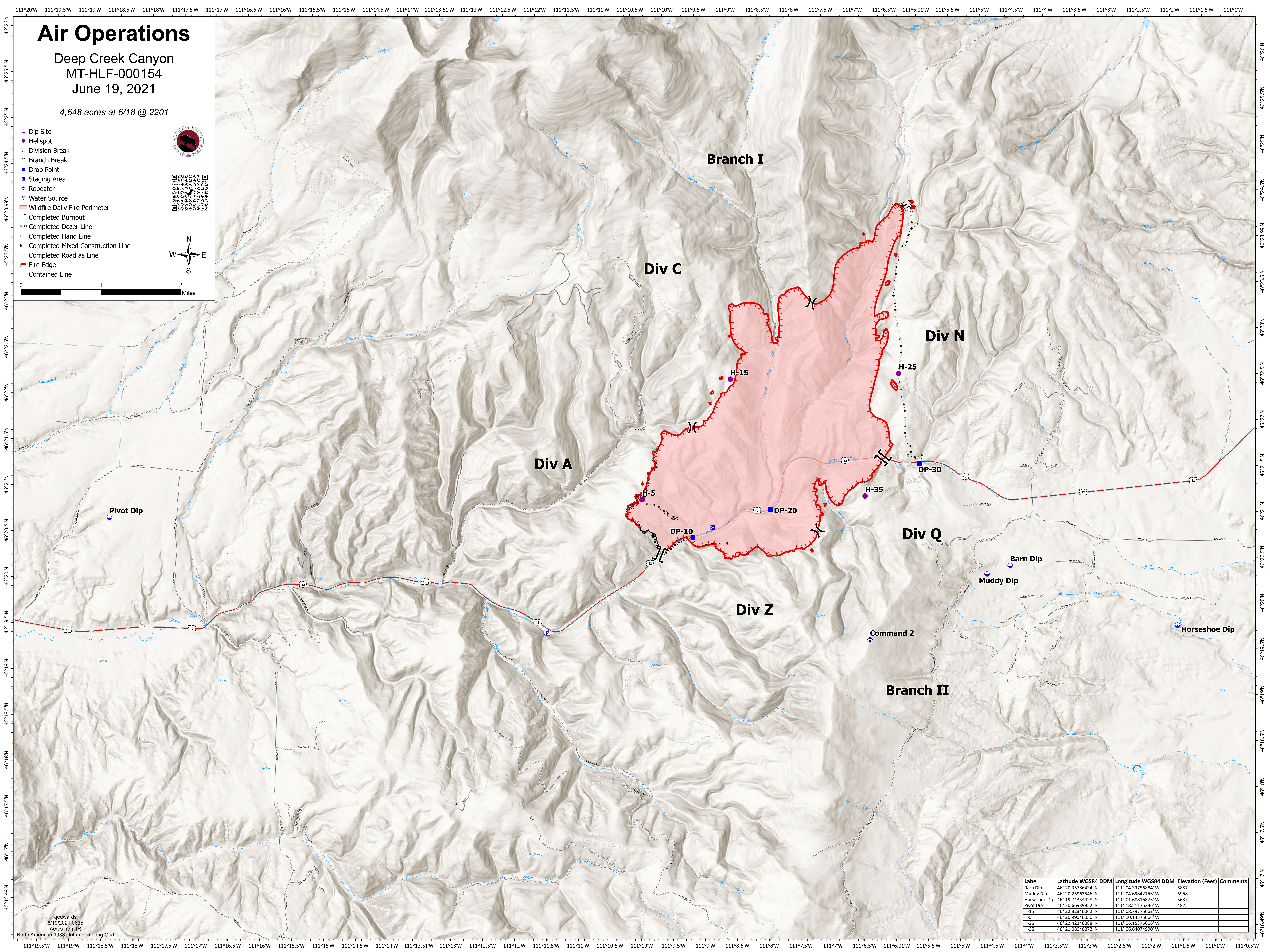


Air Operations

Deep Creek Canyon
 MT-HLF-000154
 June 19, 2021

4,648 acres at 6/18 @ 2201

- Dip Site
- Helispot
- × Division Break
- ⊥ Branch Break
- Drop Point
- Staging Area
- ◆ Repeater
- ◆ Water Source
- ▭ Wildfire Daily Fire Perimeter
- ▭ Completed Burnout
- ▭ Completed Dozer Line
- ▭ Completed Hand Line
- ▭ Completed Mixed Construction Line
- ▭ Completed Road as Line
- ▭ Fire Edge
- ▭ Contained Line

Label	Latitude WGS84 DDM	Longitude WGS84 DDM	Elevation (Feet)	Comments
Barn Dip	46° 20.35786424' N	111° 04.33756884' W	5857	
Muddy Dip	46° 20.25963546' N	111° 04.69842756' W	5958	
Horseshoe Dip	46° 19.74334428' N	111° 01.68816876' W	5637	
Pivot Dip	46° 20.66939952' N	111° 18.51175236' W	4825	
H-15	46° 22.32340062' N	111° 08.79775062' W		
H-5	46° 20.99040036' N	111° 10.14575064' W		
H-25	46° 22.42340088' N	111° 06.15375006' W		
H-35	46° 21.08040072' N	111° 06.64074990' W		

redwards
 6/19/2021 0635
 Acres from IR
 North American 1983 Datum: LatLong Grid