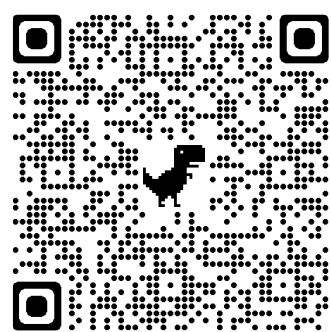
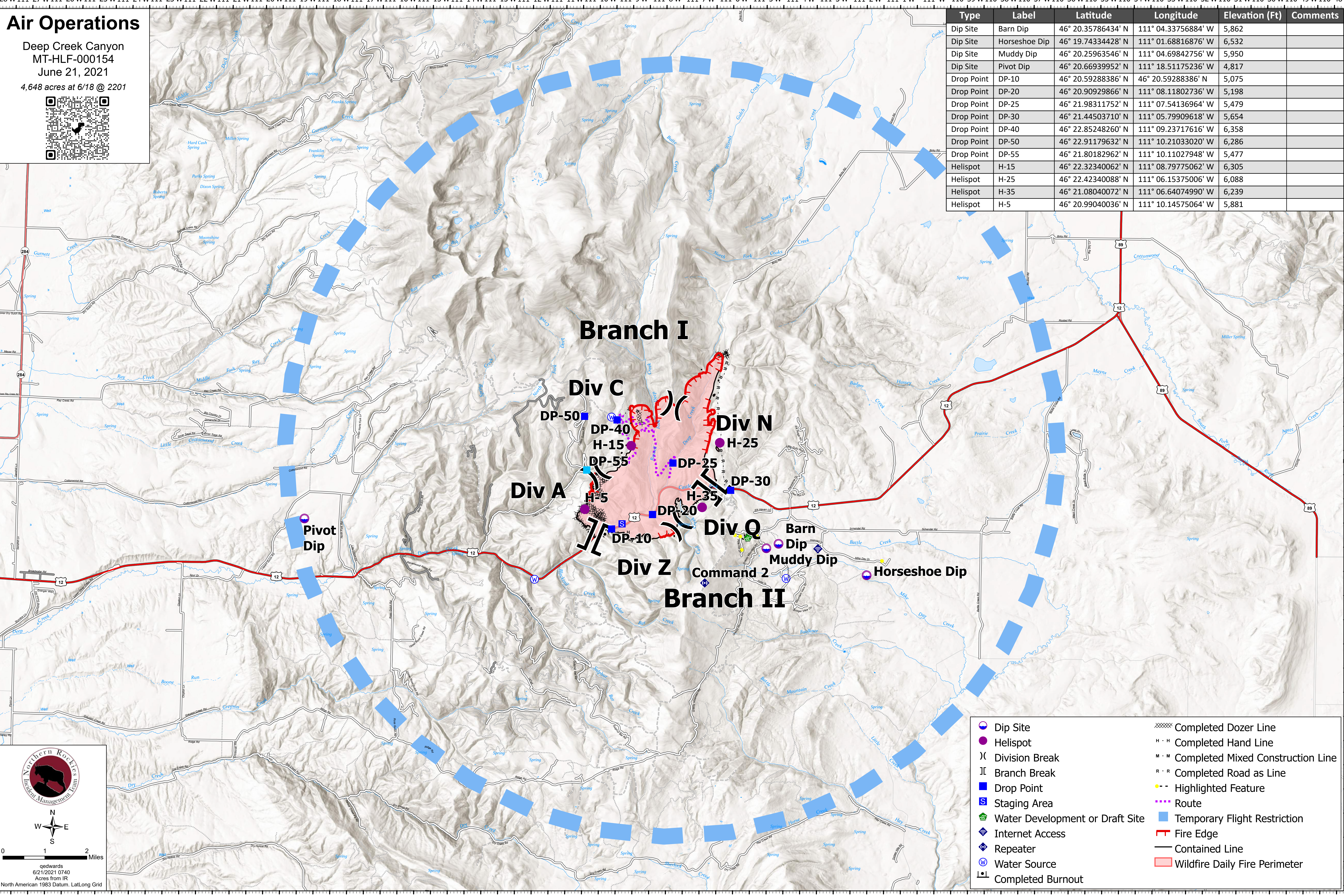


# Air Operations

Deep Creek Canyon  
 MT-HLF-000154  
 June 21, 2021  
 4,648 acres at 6/18 @ 2201



Type	Label	Latitude	Longitude	Elevation (Ft)	Comments
Dip Site	Barn Dip	46° 20.35786434' N	111° 04.33756884' W	5,862	
Dip Site	Horseshoe Dip	46° 19.74334428' N	111° 01.68816876' W	6,532	
Dip Site	Muddy Dip	46° 20.25963546' N	111° 04.69842756' W	5,950	
Dip Site	Pivot Dip	46° 20.66939952' N	111° 18.51175236' W	4,817	
Drop Point	DP-10	46° 20.59288386' N	46° 20.59288386' W	5,075	
Drop Point	DP-20	46° 20.90929866' N	111° 08.11802736' W	5,198	
Drop Point	DP-25	46° 21.98311752' N	111° 07.54136964' W	5,479	
Drop Point	DP-30	46° 21.44503710' N	111° 05.79909618' W	5,654	
Drop Point	DP-40	46° 22.85248260' N	111° 09.23717616' W	6,358	
Drop Point	DP-50	46° 22.91179632' N	111° 10.21033020' W	6,286	
Drop Point	DP-55	46° 21.80182962' N	111° 10.11027948' W	5,477	
Helispot	H-15	46° 22.32340062' N	111° 08.79775062' W	6,305	
Helispot	H-25	46° 22.42340088' N	111° 06.15375006' W	6,088	
Helispot	H-35	46° 21.08040072' N	111° 06.64074990' W	6,239	
Helispot	H-5	46° 20.99040036' N	111° 10.14575064' W	5,881	



0 1 2 Miles  
 6/21/2021 0740  
 Acres from IR  
 North American 1983 Datum, LatLong Grid

- Dip Site
- Helispot
- Division Break
- Branch Break
- Drop Point
- Staging Area
- Water Development or Draft Site
- Internet Access
- Repeater
- Water Source
- Completed Burnout
- Completed Dozer Line
- Completed Hand Line
- Completed Mixed Construction Line
- Completed Road as Line
- Highlighted Feature
- Route
- Temporary Flight Restriction
- Fire Edge
- Contained Line
- Wildfire Daily Fire Perimeter