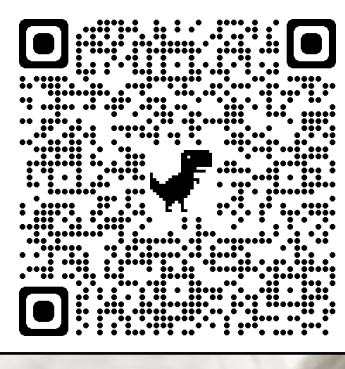
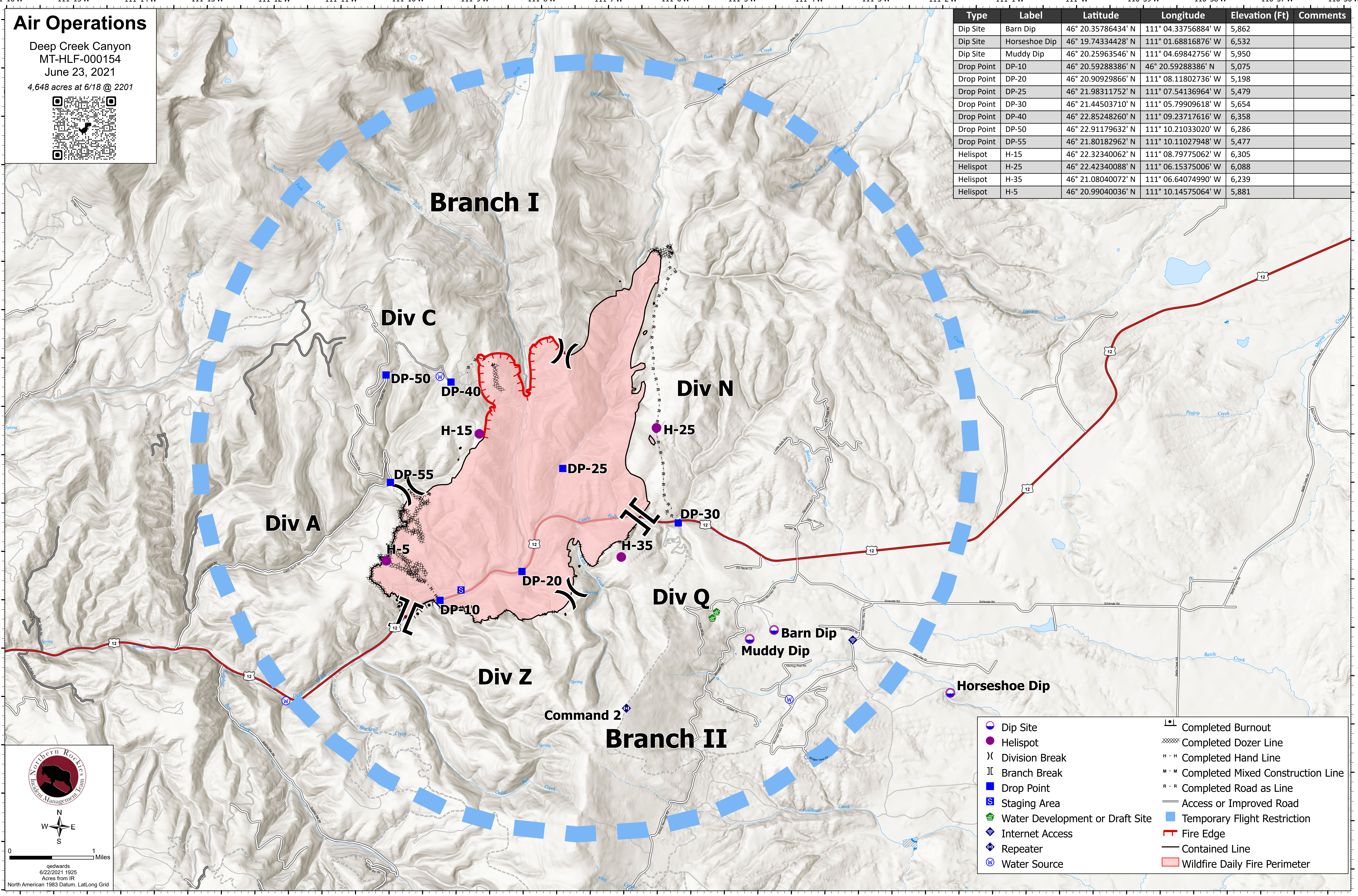


# Air Operations

Deep Creek Canyon  
 MT-HLF-000154  
 June 23, 2021  
 4,648 acres at 6/18 @ 2201



Type	Label	Latitude	Longitude	Elevation (Ft)	Comments
Dip Site	Barn Dip	46° 20.35786434' N	111° 04.33756884' W	5,862	
Dip Site	Horseshoe Dip	46° 19.74334428' N	111° 01.68816876' W	6,532	
Dip Site	Muddy Dip	46° 20.25963546' N	111° 04.69842756' W	5,950	
Drop Point	DP-10	46° 20.59288386' N	46° 20.59288386' W	5,075	
Drop Point	DP-20	46° 20.90929866' N	111° 08.11802736' W	5,198	
Drop Point	DP-25	46° 21.98311752' N	111° 07.54136964' W	5,479	
Drop Point	DP-30	46° 21.44503710' N	111° 05.79909618' W	5,654	
Drop Point	DP-40	46° 22.85248260' N	111° 09.23717616' W	6,358	
Drop Point	DP-50	46° 22.91179632' N	111° 10.21033020' W	6,286	
Drop Point	DP-55	46° 21.80182962' N	111° 10.11027948' W	5,477	
Helispot	H-15	46° 22.32340062' N	111° 08.79775062' W	6,305	
Helispot	H-25	46° 22.42340088' N	111° 06.15375006' W	6,088	
Helispot	H-35	46° 21.08040072' N	111° 06.64074990' W	6,239	
Helispot	H-5	46° 20.99040036' N	111° 10.14575064' W	5,881	



0 1 Miles

6/22/2021 1925  
 Acres from IR  
 North American 1983 Datum, LatLong Grid

	Dip Site		Completed Burnout
	Helispot		Completed Dozer Line
	Division Break		Completed Hand Line
	Branch Break		Completed Mixed Construction Line
	Drop Point		Completed Road as Line
	Staging Area		Access or Improved Road
	Water Development or Draft Site		Temporary Flight Restriction
	Internet Access		Fire Edge
	Repeater		Contained Line
	Water Source		Wildfire Daily Fire Perimeter