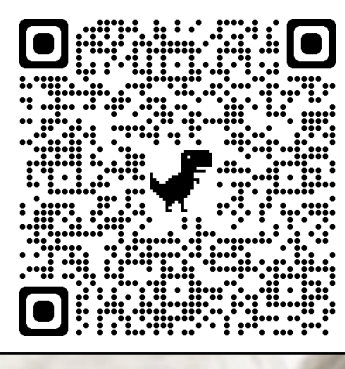
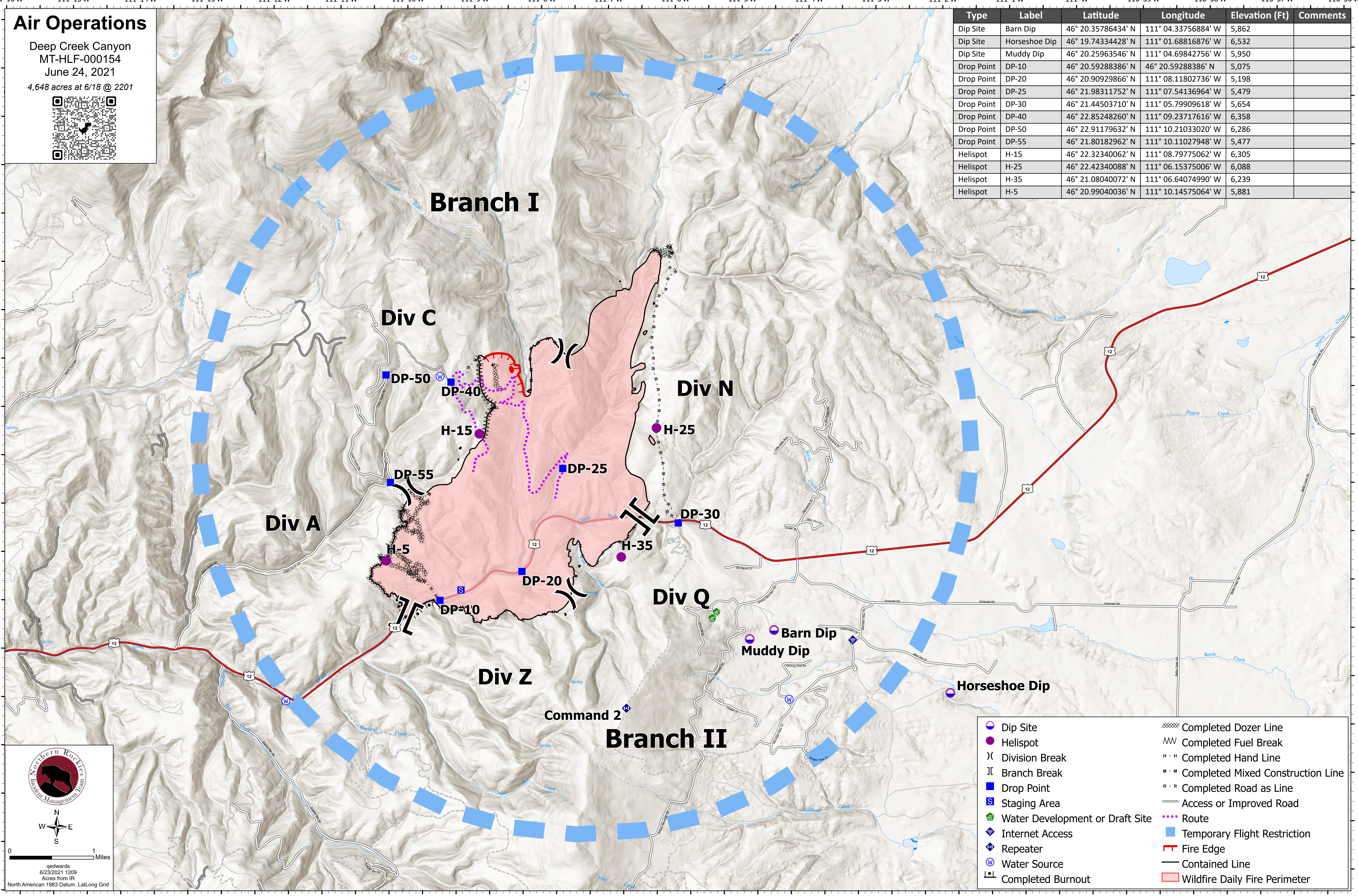


Air Operations

Deep Creek Canyon
 MT-HLF-000154
 June 24, 2021
 4,648 acres at 6/18 @ 2201



Type	Label	Latitude	Longitude	Elevation (Ft)	Comments
Dip Site	Barn Dip	46° 20.35786434' N	111° 04.33756884' W	5,862	
Dip Site	Horseshoe Dip	46° 19.74334428' N	111° 01.68816876' W	6,532	
Dip Site	Muddy Dip	46° 20.25963546' N	111° 04.69842756' W	5,950	
Drop Point	DP-10	46° 20.59288386' N	46° 20.59288386' W	5,075	
Drop Point	DP-20	46° 20.90929866' N	111° 08.11802736' W	5,198	
Drop Point	DP-25	46° 21.98311752' N	111° 07.54136964' W	5,479	
Drop Point	DP-30	46° 21.44503710' N	111° 05.79909618' W	5,654	
Drop Point	DP-40	46° 22.85248260' N	111° 09.23717616' W	6,358	
Drop Point	DP-50	46° 22.91179632' N	111° 10.21033020' W	6,286	
Drop Point	DP-55	46° 21.80182962' N	111° 10.11027948' W	5,477	
Helispot	H-15	46° 22.32340062' N	111° 08.79775062' W	6,305	
Helispot	H-25	46° 22.42340088' N	111° 06.15375006' W	6,088	
Helispot	H-35	46° 21.08040072' N	111° 06.64074990' W	6,239	
Helispot	H-5	46° 20.99040036' N	111° 10.14575064' W	5,881	



gedwards
 6/23/2021 1209
 Acres from IR
 North American 1983 Datum, LatLong Grid

Dip Site	Completed Dozer Line
Helispot	Completed Fuel Break
Division Break	Completed Hand Line
Branch Break	Completed Mixed Construction Line
Drop Point	Completed Road as Line
Staging Area	Access or Improved Road
Water Development or Draft Site	Route
Internet Access	Temporary Flight Restriction
Repeater	Fire Edge
Water Source	Contained Line
Completed Burnout	Wildfire Daily Fire Perimeter