

Incident Action Plan

Day Operational Period
Tuesday 7/27/2021 0600-2100

Night Operational Period
Tuesday 07/27/2021 1800 –
Wednesday 07/28/2021 1000

American Fork
MT-HLF-005087 P1N57E
(0115)

Divide Complex
MT-HLF-005079 P1N5FU
(0115)



Morning Ops Briefing (0700)
Zoom link: Zoom ID: 160 317 4872
Dial in # 1-551-285-1373



Check-in



American Fork Maps



Divide Complex Maps

2021.divide.finance@firenet.gov

2021.americanfork.finance@firenet.gov

1 INCIDENT NAME American Fork Fire and Divide Complex	2. OPERATIONAL PERIOD: DAY / NIGHT 07/27/2021 Tuesday 0600 - 07/28/2021 Wednesday 1000	2. DATE PREPARED 07/26/2021	3. TIME PREPARED 1800
---	---	---------------------------------------	---------------------------------

3. GENERAL CONTROL OBJECTIVES FOR THE INCIDENT (INCLUDE ALTERNATIVES)

Management Objectives

- 1) Protection of human life and safety is the first priority for all actions taken on a wildfire and can overrule all other strategic/management objectives and incident requirements.
- 2) Base management decisions on meeting objectives while also minimizing the risk of COVID-19 exposures to responders and the public. COVID-19 considerations may alter how you meet goals but should not lead to higher risk tactics.
- 3) Maintain and strengthen relationships with the Helena-Lewis and Clark NF, Custer-Gallatin NF, private landowners, the public, cooperators and partners by providing timely and accurate information.
- 4) Use management actions that ensure fire personnel safety from contact with bears through compliance with the Food Storage Special Order.
- 5) Protect the unique attributes of impacted watersheds through actions that minimize sedimentation and invasive species movement.
- 6) Protect impact to cultural resources through consultation with local forest specialists.

Control Objectives

Divide Complex

- 1) Protection of human life and safety is the first priority for all actions taken and shall override all other incident control objectives. Evaluate risk vs. benefit in strategic and tactical planning and only commit operational resources to actions that have the highest probability of success.
- 2) Protect Tenderfoot Experimental Forest infrastructure within the tenderfoot drainage.
- 3) Protect the communities of Belt Park, Deer Creek Estates, Monarch, Neihart and the Hwy 89 corridor to avoid loss or damage to private lands and critical infrastructure.
- 4) Use mechanized equipment to establish and improve control lines where approved to minimize risk and exposure to firefighting resources.
- 5) Provide initial attack resources to respond to any new ignitions within the TFR area to limit potential size and growth.

American Fork Fire

- 1) Protection of human life and safety is the first priority for all actions taken and shall override all other incident control objectives. Evaluate risk vs. benefit in strategic and tactical planning and only commit operational resources to actions that have the highest probability of success.
- 2) Keep fire on Forest Service lands to protect and limit impact to adjacent landowner property and values at risk.
- 3) Provide initial attack resources to respond to any new ignitions within the TFR area to limit potential size and growth.

4. Operational Period Command Emphasis:

***** L C E S *****

5. General Situational Awareness: **Enhanced Fire Weather Conditions Expected Today**

Enhanced fire weather conditions are expected today for all fires for min RHs of 14-18 percent and hot temperatures. Winds will be more westerly initially and turn out of the NW as the day progresses. A chance for a shower or isolated thunderstorm will exist after 1800 hours. Isolated shower chances will continue through the overnight hours, primarily for the Divide Complex. Any shower/storm can produce erratic and gusty winds to 45 mph. Keep in mind gusty winds are possible far away from the nearest precipitation. Better RH recoveries (35-45%) are expected tonight with a partly to mostly cloudy sky.

7. GENERAL MESSAGE

See the attached Safety Message for more information.

ORGANIZATION LIST (ICS 203)

MEDICAL PLAN (ICS 206)

WEATHER SPOT FORECAST

ASSIGNMENT LIST (ICS 204)

AIR OPS. SUMMARY (ICS 220)

FIRE BEHAVIOR FORECAST

COMMUNICATION PLAN (I)

SAFETY MESSAGE


INCIDENT EMERGENCY PLAN

ICS 202


9. PREPARED BY (PLANNING SECTION CHIEF)
Carol O'Bryan *Carol O'Bryan*

10. APPROVED BY (INCIDENT COMMANDER)
Michael Cheek (t) *Michael Cheek*

ORGANIZATION ASSIGNMENT LIST (ICS 203)

1. Incident Name:		2. Operational Period: DAY-NIGHT	
AMERICAN FORK FIRE AND DIVIDE COMPLEX		Date/Time From: 07/27/2021 0600 TUE	Date/Time To: 07/28/2021 1000 WED
3. Incident Commander(s) and Command Staff:		EQUIPMENT MANAGER CHAD WILEY (T); BRIAN TRUSS (T)	
IC/UC	DEBORAH BEARD; MICHAEL CHEEK(T)	ORDERING UNIT SHERRI KITE (AF); LEIGH OSTIN (DC)	
DEPUTY	MARTY BENTLEY	RECEIVING & DISTRIBUTION UNIT DONNIE NORVELL; IAN JOHNSON (DC); JOSH CLARK (AF)	
LIAISON OFFICER	MIKE WRIGHT; BOBBY CLAYBROOK (T) JEFF GARDNER (T); BRADLEY COOPER (T)	COMMUNICATIONS UNIT GEORGE ROSENTHAL SHANNON HERRING (T)	
SAFETY OFFICER	BUDDY KELLEY; PAUL CHURCHILL; LARRY HOLSOMBACK; JEFF HENDERSON (T)	MEDICAL UNIT TIM EXLINE SHERRI MCDUGAL (T)	
INFORMATION OFFICER	MICHELLE BURNETT (V); ANDY GRAY; BROOK SMITH (T); TRISH BOLES (T); CATHY DOWD (T)(V); EMILY CLEAVER (T)(V); RAY BUTLER (T)	SECURITY UNIT GREG BLANKS; SASHA HERRIN; SEAN WAGGONER	
4. Agency/Organization Representative(s):		7. Operations Section:	
Agency/Organization	Name	LEAD OPS SECTION CHIEF JEFF SCHARDT	
USFS	CAROL HATFIELD; ALEX SIENKIEWICZ	PLANNING OPS SECTION CHIEF SHAWN NAGLE KEVIN GRODI (T)	
DNRC	JOCEE HEDRICK; HEIDI CRUM	FIELD OPS SECTION CHIEF TYLER VAN ORMER BERT PLANTE (T)	
5. Planning Section:		Branch I AMERICAN FORK	
CHIEF	CAROL O'BRYAN; THOMAS BARRETT; JESSICA HOLLINGSWORTH (V) KELLY RUSSELL (T)	BRANCH DIRECTOR BRIAN ELAM	
RESOURCES UNIT	MELONIE SELLERS; LAILA LIENESCH JOCELYN HOWELL (T)	DIVISION/GROUP A ABE PHILIPSON	
SITUATION UNIT	CHRIS EVANS (V)	DIVISION/GROUP M STEVE GRAY	
FIRE BEHAVIOR ANALYST	KELLY CAGLE	DIVISION/GROUP P UNSTAFFED	
INCIDENT METEOROLOGIST	CORY MATTICE	Branch II DIVIDE COMPLEX - ELLIS	
GIS SPECIALIST	ETHAN ROBERTSON; CHRISTIAN VOSE (V); KATHERINE WHITE KEYLONDA ARMWOOD; CLELL BRITT (T)	DIVISION/GROUP E/Q MATT JOHNSON; BRIAN DELASANTOS(T)	
TECHNOLOGY SUPPORT SPECIALIST	JAMES EHRLICH; RUSTY BROWN; KEVIN CURRY (V); JEREMY ALBRIGHT (T)	Branch III DIVIDE COMPLEX - BALSINGER	
DEMOBILIZATION UNIT	JEFF DEMATTEIS	BRANCH DIRECTOR JOSH GRAHAM	
STATUS CHECK-IN	PAULA HENSLEY (T)	DIVISION/GROUP I GREG SALANSKY MATT MOE (T)	
TRAINING SPECIALIST	AL HOKE (V)	DIVISION/GROUP T DANNY GORE EVAN HAUGAN (T)	
6. Logistics Section:		DIVISION/GROUP STRUCTURE TK KENNEDY KEVIN GRODI (T)	
CHIEF	JAMIE COPPLE	DIVISION/GROUP U BRIAN KEATING GABRIEL TEMPLETON (T)	
DEPUTY	JIM ALDRIDGE	DIVISION/GROUP IA TFLD MIKE WILLIARDSON	
SUPPLY UNIT	LEMUEL COOKSEY	DIVISION/GROUP NIGHT TFLD JASON O'NEILL	
FOOD UNIT	SHANNON WILLIAMS	7b. Air Operations Branch:	
GROUND SUPPORT UNIT	TODD WALLER	AIR OPS BRANCH DIRECTOR TIM ELDER	
9. Prepared By: Name: CAROL O'BRYAN Position/Title: PSC2 Signature: 		AIR TACTICAL GROUP SUPERVISOR STEVE LITTLE	
ICS 203	IAP Page	HELIBASE MANAGER JOHN NOBLES; JOSH BARDWELL (T)	
Date/Time: 07/26/2021 1800		AIR SUPPORT GROUP SUPERVISOR BRIAN BUTLER (T)	
		8. Finance/Administration Section:	

ORGANIZATION ASSIGNMENT LIST (ICS 203)

1. Incident Name:		2. Operational Period: DAY-NIGHT	
AMERICAN FORK FIRE AND DIVIDE COMPLEX		Date/Time From: 07/27/2021 0600 TUE	Date/Time To: 07/28/2021 1000 WED
CHIEF	REGGIE LANIER JASON GILLIS (T)		
TIME UNIT	LAURA WILSON; DONNA BENTLEY (V); TAYLOR JONES		
COMPENSATION UNIT	TERRI MCDONALD (V)		
COST UNIT	MARLENE HUDSON		
EQUIPMENT	TWANISHA BENNETT		
9. Prepared By:	Name: CAROL O'BRYAN	Position/Title: PSC2	Signature:
ICS 203	IAP Page	Date/Time: 07/26/2021 1800	 PSC2



← Submit Wx Obs!

INCIDENT Weather Forecast



View Local Obs →

FORECAST NO: 5
PREDICTION FOR: Tuesday
SHIFT DATE: July 27, 2021
FORECAST ISSUED: 1800 July 26, 2021

NAME OF FIRE: American Fork/Divide Complex
UNIT: Helena/Lewis & Clark NF and Guster Gallatin NF
SIGNED: Cory Mottice
Incident Meteorologist

****Enhanced Fire Weather Conditions Expected Today****

****Erratic and gusty winds to 45 mph possible with any shower or storm. Keep in mind gusty winds are possible far away from the nearest precipitation.****

WEATHER DISCUSSION: Enhanced fire weather conditions are expected today for all fires for min RHs of 14-18 percent and hot temperatures. Winds will be more westerly initially and turn out of the NW as the day progresses. A chance for a shower or isolated thunderstorm will exist after 1800 hours. Isolated shower chances will continue through the overnight hours, primarily for the Divide Complex. *Any shower/storm can produce erratic and gusty winds to 45 mph.* Better RH recoveries (35-45%) are expected tonight with a partly to mostly cloudy sky.

WEATHER FORECAST FOR THE DIVIDE COMPLEX & AMERICAN FORK:

WEATHER: Hot, dry, and partly cloudy. 30% chance of a shower/storm after 1800 hours. Very little to no measurable rainfall is expected. Erratic wind gusts to 45 mph possible with any shower/storm.

TEMPERATURES: 80-84 ridges and 85-90 valley bottoms

HUMIDITY: Minimums 14 to 18%

20 FT WINDS:

RIDGETOP - West 10 to 15 mph becoming more NW through the day with gusts to 20 mph.

SLOPE/VALLEY - Upslope/upvalley 8 to 12 mph with locally higher gusts.

HAINES INDEX: 5 (Moderate chance of plume dominated activity)

CHANCE OF WETTING RAIN (> .10): 0%

STABILITY/INVERSION: Weak inversion breaking by 0900.

OUTLOOK FOR TONIGHT:

A slight chance of a shower with gusty winds will exist through tonight, primarily over the Divide Complex. RH recoveries will be better tonight than we have seen the past few nights with recoveries reaching 35-45%. A weak thermal belt will be present tonight, primarily keeping the warmer and drier conditions confined to the mid and upper elevations.

OUTLOOK FOR WEDNESDAY AND THURSDAY:

Partly cloudy skies and cooler temperatures are expected Wednesday and Thursday with min RHs around 24% on Wednesday and 35% on Thursday. Winds will be mostly upslope/upvalley at 8-12 mph during the day and downslope/downvalley at 4-8 mph during the overnight hours. A chance for thunderstorms will exist each afternoon/evening with the main threat of any storm being erratic, gusty winds to 45 mph.

FIRE BEHAVIOR FORECAST

FORECAST NUMBER: # 5	TYPE OF FIRE: Wildland
FIRE NAME: American Fork/ Divide Complex	OPERATIONAL PERIOD: 07/27/2021 Day/Night Shift
DATE ISSUED: 07/26/2021	TIME ISSUED: 2000
UNT: Helena/Lewis and Clark NF and Guster /Gallatin NF	WRITTEN: Kelly Cagle FBAN

FUEL ASSUMPTIONS: The major fuel types found on the American Fork/Divide Complex are Fuel Model 10 (mixed conifer with heavy dead/down) as well as areas of Fuel Model 2 (short grass w/timber) in the lower elevations. Current fuel conditions are favorable for extreme fire behavior within all fuel types, especially 100 hour and 1000 hour fuels. Live fuel moistures are low enough to contribute as well. Heavy dead and down will likely be the most problematic. ERC's are approaching all time high's for today's date.

WEATHER SUMMARY: Reference fire weather forecast for specifics.
Enhanced fire weather conditions are expected today for all fires for min RHs of 14-18 percent and hot temperatures. Winds will be more westerly initially and turn out of the NW as the day progresses. A chance for a shower or isolated thunderstorm will exist after 1800 hours. Isolated shower chances will continue through the overnight hours, primarily for the Divide Complex.

General Fire Behavior Forecast: Weather today will create conditions for extreme fire behavior. Wind and fuel driven fire with uphill runs and torching or crowning should be expected wherever fuels exist for fire to consume. Long distance spotting is probable anywhere wind and slope align. General movement will be upslope or towards the north and east. **Expect a high resistance to control.** Expect activity to begin early in the day and to persist thru early evening and into the night hours.

Specific:

American Fork Fire Expect intense fire behavior anywhere that fuel is available for fire to consume. Slopover in South Fork/American Fork drainage will run upslope to the ridgetop/rocks and likely move easterly where fuel will allow. Expect progression to continue unabated until fire reaches rocks/grass. Blacktail fire scar should continue to limit spread to the north.

Balsinger Fire – Expect fire to continue to progress unabated to the north and east until it runs out of fuel. Fire behavior will be intense, with group torching, crown runs, and long range spotting likely. It will be difficult to suppress fire in conifer fuel under the extremely dry conditions.

Ellis Fire – Isolated single tree torching will most likely continue. There could be reburn potential in canopy fuels if canopy is intact/brown. Any heat source in direct contact with unburned fuel could produce intense fire behavior today.

Night Shift – Expect fire to remain active well into the overnight hours. In recent days this fire has been extremely active until midnight or beyond – at times with unexpectedly active fire behavior. Forward movement of fire with torching is certainly possible. Short canopy runs cannot be ruled out.

Fine fuel moisture today is -	2 to 3%	2 Critical Thresholds are being exceeded today!
Probability of Ignition today -	90% +	(Rh, and 1000 hr fuel moisture)
Max Spotting Distance Today-	½ mile or greater	Haines is at 5 for today

AIR OPERATIONS: Light inversion will quickly fade by mid morning. Otherwise, conditions should be suitable for aviation operations.

FIRE BEHAVIOR SAFETY: Watch out situation # 14 – Weather becoming hotter and dryer. Temps today will be warmer than previous days. This will facilitate easier/quicker ignition of fine fuels.

Division/Group Assignment List (ICS 204 WF)
Controlled Unclassified Information//Basic

1. Incident Name:			3.			
AMERICAN FORK			Branch:		Division/Group	
2. Operational Period: DAY / NIGHT			I		A	
Date/Time From: 07/27/2021 0600 TUE		Date/Time To: 07/28/2021 1000 WED				
4. Operations Personnel						
BRANCH DIRECTOR BRIAN ELAM		FIELD OPERATIONS CHIEF TYLER VAN ORMER BERT PLANTE (T)				
LEAD OPERATIONS CHIEF JEFF SCHARDT		PLANNING OPERATIONS CHIEF SHAWN NAGLE KEVIN GRODI (T)				
DIVISION/GROUP SUPERVISOR ABE PHILIPSON						
5. Resources Assigned this Period						
Strike Team / Task Force / Resource Designator		LWD	Leader	Number Persons	Drop Off PT./Time	Pick Up PT./Time
O-9 TFLD		08/04	DANNY LOWELL	1	AMERICAN FORK SPIKE/0600	AMERICAN FORK SPIKE/2100
O-53 TFLD		07/30	ROCK BYRD	1	AMERICAN FORK SPIKE/0600	AMERICAN FORK SPIKE/2100
C-5 HC2 OREGON WOODS		07/28	ALEX TOMCHAK	20	AMERICAN FORK SPIKE/0600	AMERICAN FORK SPIKE/2100
C-8 HC2 BLUE MOUNTAIN		07/31	JESUS RAMOS	20	AMERICAN FORK SPIKE/0600	AMERICAN FORK SPIKE/2100
E-9 T6 ENG TEXAS FIRE		08/05	CARLOS MAGANA	2	AMERICAN FORK SPIKE/0600	AMERICAN FORK SPIKE/2100
E-13 T6 ENG BISHOP		08/06	EDGAR JOHNSON	3	AMERICAN FORK SPIKE/0600	AMERICAN FORK SPIKE/2100
E-14 T6 ENG BISHOP		08/06	ANNA WILDGUN	3	AMERICAN FORK SPIKE/0600	AMERICAN FORK SPIKE/2100
E-19 T6 ENG SOLOMON FIRE		08/07	TADLAM MERE	3	AMERICAN FORK SPIKE/0600	AMERICAN FORK SPIKE/2100
E-XX T6 ENG E621		07/29	MATT BIRCKSHIRE	5	AMERICAN FORK SPIKE/0600	AMERICAN FORK SPIKE/2100
E-2 T3 DOZ MEADOW CREEK		07/26	SHAWN HEYER	2	AMERICAN FORK SPIKE/0600	AMERICAN FORK SPIKE/2100
E-14 DOZ2 CONIFER LOGGING		07/28	JUSTIN MCDONOUGH	1	AMERICAN FORK SPIKE/0600	AMERICAN FORK SPIKE/2100
E-30 WAT2 CASTLE MOUNTAIN		08/06	BRENDAN ZELANKA	1	AMERICAN FORK SPIKE/0600	AMERICAN FORK SPIKE/2100
CHIP HLF		07/30	LOCAL	1	AMERICAN FORK SPIKE/0600	AMERICAN FORK SPIKE/2100
E-83 T1 EXCA WIRTH		08/03	WIRTH	1	AMERICAN FORK SPIKE/0600	AMERICAN FORK SPIKE/2100
E-60 EMTF		07/31	GABRIEL MIZRAHI	2	AMERICAN FORK SPIKE/0600	AMERICAN FORK SPIKE/2100
O-50 SOFR		08/06	SHAWN DUGGAR	1	AMERICAN FORK SPIKE/0600	AMERICAN FORK SPIKE/2100
READ			RANDY SCARLETT	1	AMERICAN FORK/0600	AMERICAN FORK/2100
ARCH			DOUG KOSIK	1	AMERICAN FORK/0600	AMERICAN FORK/2100
6. Control Operations/Work Assignments:						
8. Division/Group Communication Summary						
Function	Channel	RX Frequency N/W	RX Tone/NAC	TX Frequency N/W	TX Tone/NAC	Mode
COMMAND	1	169.7500	107.2	167.1000	107.2	A
TACTICAL	6	166.9875		166.9875	114.8	A
9. Prepared By (Resource Unit Leader)			Approved By (Planning Section Chief)		Date	Time
JOCELYN HOWELL RESL(T)			CAROL O'BRYAN		07/26/2021	1700

Division/Group Assignment List (ICS 204 WF)
Controlled Unclassified Information//Basic

1. Incident Name:				3.			
AMERICAN FORK				Branch:		Division/Group	
2. Operational Period: DAY / NIGHT				I		A	
Date/Time From: 07/27/2021 0600 TUE		Date/Time To: 07/28/2021 1000 WED					
4. Operations Personnel							
BRANCH DIRECTOR		BRIAN ELAM		FIELD OPERATIONS CHIEF		TYLER VAN ORMER BERT PLANTE (T)	
LEAD OPERATIONS CHIEF		JEFF SCHARDT		PLANNING OPERATIONS CHIEF		SHAWN NAGLE KEVIN GRODI (T)	
DIVISION/GROUP SUPERVISOR		ABE PHILIPSON					
6. Control Operations/Work Assignments:							
<p>Task:Continue to construct hand line off of established dozer line from DIV A/M break west toward Fawn Creek. Scout and identify potential contingency line location options to the south from Blackberry Creek west toward Sweet Grass Creek ridge.</p> <p>Purpose:To improve containment along the fires southern edge and begin construction of a contingency line to the south of the main fire.</p> <p>End State:Keep fire north of the contingency line to prevent fire from crossing the National Forest boundary.</p>							
7. Special Instructions:							
<p>Coordinate with READ before heavy equipment use: there is potential for sensitive resources in this area Please coordinate with READ if sensitive/archeological resources are located Please provide a picture of the artifact/site and a GPS location if found Do not post photos with Archeological resources that have location information</p> <p>**IN THE EVENT OF AN IWI: 0600-2100- CONTACT DIVIDE COMMUNICATIONS AFTER 2100- CONTACT HELENA DISPATCH VIA RADIO CH2 SUNLIGHT. IF UNREACHABLE CONTACT VIAPHONE 406-444-4242</p>							
8. Division/Group Communication Summary							
Function		Channel	RX Frequency N/W	RX Tone/NAC	TX Frequency N/W	TX Tone/NAC	Mode
COMMAND		1	169.7500	107.2	167.1000	107.2	A
TACTICAL		6	166.9875		166.9875	114.8	A
9. Prepared By (Resource Unit Leader)			Approved By (Planning Section Chief)			Date	Time
JOCELYN HOWELL RESL(T)			CAROL O'BRYAN			07/26/2021	1700

Division/Group Assignment List (ICS 204 WF)
Controlled Unclassified Information//Basic

1. Incident Name:			3.			
AMERICAN FORK			Branch:		Division/Group	
2. Operational Period: DAY / NIGHT			I		M	
Date/Time From: 07/27/2021 0600 TUE		Date/Time To: 07/28/2021 1000 WED				
4. Operations Personnel						
BRANCH DIRECTOR BRIAN ELAM		FIELD OPERATIONS CHIEF TYLER VAN ORMER BERT PLANTE (T)				
LEAD OPERATIONS CHIEF JEFF SCHARDT		PLANNING OPERATIONS CHIEF SHAWN NAGLE KEVIN GRODI (T)				
DIVISION/GROUP SUPERVISOR STEVE GRAY CURTIS LITTLEFIELD (T)						
5. Resources Assigned this Period						
Strike Team / Task Force / Resource Designator		LWD	Leader	Number Persons	Drop Off PT./Time	Pick Up PT./Time
O-77 TFLD		07/30	TODD MARKHAM	1	AMERICAN FORK SPIKE/0600	AMERICAN FORK SPIKE/2100
E-2 T3 ENG ROCKY MOUNTAIN		08/01	SEAN RIPHENBURG	3	AMERICAN FORK SPIKE/0600	AMERICAN FORK SPIKE/2100
E-11 T3 ENG CASTLE MOUNTAIN		08/03	JOSEPH MEYER	3	AMERICAN FORK SPIKE/0600	AMERICAN FORK SPIKE/2100
E-38 T4 ENG LOOMIS		08/03	TAYLOR EASLEY W/EMT	3	AMERICAN FORK SPIKE/0600	AMERICAN FORK SPIKE/2100
E-44 T4 ENG GIST		07/30	STEVE GIST W/EMT	3	AMERICAN FORK SPIKE/0600	AMERICAN FORK SPIKE/2100
E-7 T6 ENG WHITEGRASS		08/03	WHITEGRASS	3	AMERICAN FORK SPIKE/0600	AMERICAN FORK SPIKE/2100
E-8 T6 ENG STAX FACTOR		08/05	JOHN HOELLERICK	3	AMERICAN FORK SPIKE/0600	AMERICAN FORK SPIKE/2100
E-10 T6 ENG CEDAR MOUNTAIN		08/03	MANSON W/EMT	4	AMERICAN FORK SPIKE/0600	AMERICAN FORK SPIKE/2100
E-12 T6 ENG FUNK FIRE		08/05	GREG FUNK	3	AMERICAN FORK SPIKE/0600	AMERICAN FORK SPIKE/2100
E-31 T6 ENG GIST		07/29	DON WOOD	3	AMERICAN FORK SPIKE/0600	AMERICAN FORK SPIKE/2100
E-1 T6 ENG R.CONSTRUCTION		08/01	RICHARD DERUCHE	3	AMERICAN FORK SPIKE/0600	AMERICAN FORK SPIKE/2100
O-50 SOFR		08/06	SHAWN DUGGAR	1	AMERICAN FORK SPIKE/0600	AMERICAN FORK SPIKE/2100
6. Control Operations/Work Assignments:						
Task: Hold previous firing operations on east line						
Purpose: Ensure fire does not progress onto private property						
End State: Fire will be kept from progressing onto private property						
7. Special Instructions:						
Coordinate with READ before heavy equipment use: there is potential for sensitive resources in this area						
Please coordinate with READ if sensitive/archeological resources are located						
Please provide a picture of the artifact/site and a GPS location if found						
Do not post photos with Archeological resources that have location information						
**IN THE EVENT OF AN IWI:						
8. Division/Group Communication Summary						
Function	Channel	RX Frequency N/W	RX Tone/NAC	TX Frequency N/W	TX Tone/NAC	Mode
COMMAND	1	169.7500	107.2	167.1000	107.2	A
TACTICAL	4	168.6125		168.6125	156.7	A
9. Prepared By (Resource Unit Leader)			Approved By (Planning Section Chief)		Date	Time
JOCELYN HOWELL RESL(T)			CAROL O'BRYAN		07/26/2021	1700

Division/Group Assignment List (ICS 204 WF)
Controlled Unclassified Information//Basic

1. Incident Name:		3.	
AMERICAN FORK		Branch:	Division/Group
2. Operational Period: DAY / NIGHT		I	M
Date/Time From: 07/27/2021 0600 TUE	Date/Time To: 07/28/2021 1000 WED		

4. Operations Personnel			
BRANCH DIRECTOR	BRIAN ELAM	FIELD OPERATIONS CHIEF	TYLER VAN ORMER BERT PLANTE (T)
LEAD OPERATIONS CHIEF	JEFF SCHARDT	PLANNING OPERATIONS CHIEF	SHAWN NAGLE KEVIN GRODI (T)
DIVISION/GROUP SUPERVISOR	STEVE GRAY CURTIS LITTLEFIELD (T)		

7. Special Instructions:

0600-2100- CONTACT DIVIDE COMMUNICATIONS
AFTER 2100- CONTACT HELENA DISPATCH VIA RADIO CH2 SUNLIGHT.
IF UNREACHABLE CONTACT VIA PHONE 406-444-4242

8. Division/Group Communication Summary						
Function	Channel	RX Frequency N/W	RX Tone/NAC	TX Frequency N/W	TX Tone/NAC	Mode
COMMAND	1	169.7500	107.2	167.1000	107.2	A
TACTICAL	4	168.6125		168.6125	156.7	A

9. Prepared By (Resource Unit Leader)	Approved By (Planning Section Chief)	Date	Time
JOCELYN HOWELL RESL(T)	CAROL O'BRYAN	07/26/2021	1700

Division/Group Assignment List (ICS 204 WF)
Controlled Unclassified Information//Basic

1. Incident Name:			3.			
AMERICAN FORK			Branch:		Division/Group	
2. Operational Period: DAY / NIGHT			I		P	
Date/Time From: 07/27/2021 0600 TUE	Date/Time To: 07/28/2021 1000 WED					
4. Operations Personnel						
BRANCH DIRECTOR	BRIAN ELAM		FIELD OPERATIONS CHIEF	TYLER VAN ORMER BERT PLANTE (T)		
LEAD OPERATIONS CHIEF	JEFF SCHARDT		PLANNING OPERATIONS CHIEF	SHAWN NAGLE KEVIN GRODI (T)		
DIVISION/GROUP SUPERVISOR						
5. Resources Assigned this Period						
Strike Team / Task Force / Resource Designator	LWD	Leader	Number Persons	Drop Off PT./Time	Pick Up PT./Time	
UNSTAFFED						
6. Control Operations/Work Assignments:						
Task: Continue to monitor by aviation and ground resources Purpose: Ensure previous actions implemented continue to mitigate any threats End State: Will continue to be monitored by aviation and ground resources						
7. Special Instructions:						
Coordinate with READ before heavy equipment use: there is potential for sensitive resources in this area Please coordinate with READ if sensitive/archeological resources are located Please provide a picture of the artifact/site and a GPS location if found Do not post photos with Archeological resources that have location information **IN THE EVENT OF AN IWI: 0600-2100- CONTACT DIVIDE COMMUNICATIONS AFTER 2100- CONTACT HELENA DISPATCH VIA RADIO CH2 SUNLIGHT. IF UNREACHABLE CONTACT VIA PHONE 406-444-4242						
8. Division/Group Communication Summary						
Function	Channel	RX Frequency N/W	RX Tone/NAC	TX Frequency N/W	TX Tone/NAC	Mode
COMMAND	1	169.7500	107.2	167.1000	107.2	A
TACTICAL	5	163.7125		163.7125	146.2	A
9. Prepared By (Resource Unit Leader)		Approved By (Planning Section Chief)		Date	Time	
JOCELYN HOWELL RESL(T)		CAROL O'BRYAN		07/26/2021	0000	

Division/Group Assignment List (ICS 204 WF)
Controlled Unclassified Information//Basic

1. Incident Name:				3.		
DIVIDE COMPLEX- ELLIS				Branch: II	Division/Group E/Q	
2. Operational Period: DAY - NIGHT						
Date/Time From: 07/27/2021 0600 TUE		Date/Time To: 07/28/2021 1000 WED				
4. Operations Personnel						
BRANCH DIRECTOR		FIELD OPERATIONS CHIEF		TYLER VAN ORMER BERT PLANTE (T)		
LEAD OPERATIONS CHIEF		PLANNING OPERATIONS CHIEF		SHAWN NAGLE KEVIN GRODI (T)		
DIVISION/GROUP SUPERVISOR		MATTHEW JOHNSON BRIAN DELASANTOS (T)				
5. Resources Assigned this Period						
Strike Team / Task Force / Resource Designator		LWD	Leader	Number Persons	Drop Off PT./Time	Pick Up PT./Time
O-71 TFLD		07/29	LUKE FOSNESS	1	DP10 /0900	SHOWDOWN SPIKE/2100
E-9 T6 ENG BISHOP		07/27	GRANT CLAYBORN	3	DP10/0900	SHOWDOWN SPIKE/2100
E-32 T6 ENG CASTLE MOUNTAIN		08/05	CHASE CORK	3	DP 10/0900	SHOWDOWN SPIKE/2100
E-33 T6 ENG CASTLE MOUNTAIN		08/05	MCCARTHY NOSIE	3	DP10/0900	SHOWDOWN SPIKE/2100
E-34 T6 ENG WINDSOR		07/26	KIRK BAUER	3	DP10/0900	SHOWDOWN SPIKE/2100
E-35 T6 ENG PEANUT PIE		08/01	DALE GOODGUN	3	DP10/0900	SHOWDOWN SPIKE/2100
E-6 T2 WAT PARK COUNTY		07/31	ELIJAH NAZARI	1	DP10/0900	SHOWDOWN SPIKE/2100
6. Control Operations/Work Assignments:						
<p>TASK: Hold and improve containment lines. Implement rehabilitation and suppression repair tactics where necessary.</p> <p>PURPOSE: Ensure previous actions complemented continue to mitigate any threats.</p> <p>END STATE: Fire will be kept within containment lines</p>						
7. Special Instructions:						
<p>Spike camp is located at Showdown Ski Resort. Dozers currently permitted on Rocking C Ranch. Adhere to food storage order. Utilize dozers on FS land as directed by ARCH / READ.</p> <p>PACE: Primary - Keep fire east of East Ford Road and dozer line. Alternate - Keep fire east of Middle Ridge Road and grader line.</p>						
8. Division/Group Communication Summary						
Function	Channel	RX Frequency N/W	RX Tone/NAC	TX Frequency N/W	TX Tone/NAC	Mode
COMMAND	6	173.8125	107.2	168.4750	107.2	
COMMAND	7	173.0375	107.2	167.3250	107.2	
COMMAND	8	169.8125	107.2	164.6750	107.2	
TACTICAL	5	166.7750	107.2	166.7750	107.2	
COMMAND	10	171.5000		164.0000	103.5	
AIR TO GROUND	13	166.6125		166.6125		
9. Prepared By (Resource Unit Leader)			Approved By (Planning Section Chief)		Date	Time
MELONIE SELLERS			CAROL O'BRYAN		07/26/2021	1700

Division/Group Assignment List (ICS 204 WF)
 Controlled Unclassified Information//Basic

1. Incident Name:		3.	
DIVIDE COMPLEX- ELLIS		Branch: II	Division/Group E/Q
2. Operational Period: DAY - NIGHT			
Date/Time From: 07/27/2021 0600 TUE	Date/Time To: 07/28/2021 1000 WED		

4. Operations Personnel			
BRANCH DIRECTOR		FIELD OPERATIONS CHIEF	TYLER VAN ORMER BERT PLANTE (T)
LEAD OPERATIONS CHIEF	JEFF SCHARDT	PLANNING OPERATIONS CHIEF	SHAWN NAGLE KEVIN GRODI (T)
DIVISION/GROUP SUPERVISOR	MATTHEW JOHNSON BRIAN DELASANTOS (T)		

7. Special Instructions:

Contingency - Keep fire east of identified ridge; west of Den Gulch Spring, 4-wheel drive road to Ellis Canyon.
Emergency - Point Protection, identify road systems to the west.

**** IN THE EVENT OF AN IWI:**
0600 - 2100 - CONTACT DIVIDE COMPLEX COMMUNICATIONS
AFTER 2100- CONTACT HELENA DISPATCH VIA RADIO CH9 BIG BALD, OR CH 10 MONUMENT.
 IF UNREACHABLE CONTACT VIA PHONE 406-444-4242

8. Division/Group Communication Summary						
Function	Channel	RX Frequency N/W	RX Tone/NAC	TX Frequency N/W	TX Tone/NAC	Mode
COMMAND	6	173.8125	107.2	168.4750	107.2	
COMMAND	7	173.0375	107.2	167.3250	107.2	
COMMAND	8	169.8125	107.2	164.6750	107.2	
TACTICAL	5	166.7750	107.2	166.7750	107.2	
COMMAND	10	171.5000		164.0000	103.5	
AIR TO GROUND	13	166.6125		166.6125		

9. Prepared By (Resource Unit Leader)	Approved By (Planning Section Chief)	Date	Time
MELONIE SELLERS	CAROL O'BRYAN	07/26/2021	1700

Division/Group Assignment List (ICS 204 WF)
Controlled Unclassified Information//Basic

1. Incident Name:			3.			
DIVIDE COMPLEX - BALSINGER			Branch:		Division/Group	
2. Operational Period: DAY - NIGHT			III		I	
Date/Time From: 07/28/2021 0600	WED	Date/Time To: 07/29/2021 2100				THU
4. Operations Personnel						
BRANCH DIRECTOR JOSH GRAHAM		FIELD OPERATIONS CHIEF TYLER VAN ORMER		BERTE PLANTE (T)		
LEAD OPERATIONS CHIEF JEFF SCHARDT		PLANNING OPERATIONS CHIEF SHAWN NAGLE		KEVIN GRODI (T)		
DIVISION/GROUP SUPERVISOR GREG SALANSKY						
MATT MOE (T)						
5. Resources Assigned this Period						
Strike Team / Task Force / Resource Designator	LWD	Leader	Number Persons	Drop Off PT./Time	Pick Up PT./Time	
O-20 HEQB (T)	07/27	TYLER CORBIN	1	SHOWDOWN SPIKE/0600	SHOWDOWN SPIKE/2100	
C-14 IHC MIDEWIN	08/09	JERRY HOFFMAN	20	SHOWDOWN SPIKE/0600	SHOWDOWN SPIKE/2100	
E-37 HEFT	07/31	MIKE WIRTH	5	SHOWDOWN SPIKE/0600	SHOWDOWN SPIKE/2100	
E-43 T4 ENG BOSKET'S EXCAVATING	07/30	REX MILLER	3	SHOWDOWN SPIKE/0600	SHOWDOWN SPIKE/2100	
E-26 T6 ENG BROWN WILDLAND	07/27	NICK BROWN	3	SHOWDOWN SPIKE/0600	SHOWDOWN SPIKE/2100	
E-13 T6 ENG PEANUT PIE	08/09	SAM ELKINS	3	SHOWDOWN SPIKE/0600	SHOWDOWN SPIKE/2100	
E-3 T3 DOZ MEADOW CREEK	07/26	SHAWN HEYER	2	SHOWDOWN SPIKE/0600	SHOWDOWN SPIKE/2100	
E-71 T2 SKD BULL CREEK FORESTRY	08/02	JAY NORTON	1	SHOWDOWN SPIKE/0600	SHOWDOWN SPIKE/2100	
E-22 T3 SKD AUSTIN LOGGING	07/30	JAMES AUSTIN	2	SHOWDOWN SPIKE/0600	SHOWDOWN SPIKE/2100	
E-57 T1 FELB J&E CONTRACTING	08/03	ED JUNGERS	1	SHOWDOWN SPIKE/0600	SHOWDOWN SPIKE/2100	
E-59 T1 FELB A&C CONSTRUCTION	08/03	HAWN MARVIN	1	SHOWDOWN SPIKE/0600	SHOWDOWN SPIKE/2100	
E-48 FELB A&L CONSTRUCTION	08/03	JOHN ANDREWS	2	SHOWDOWN SPIKE/0600	SHOWDOWN SPIKE/2100	
E-65 LOG C & G LOGGING	08/03	COLTON GONDEIRO	1	SHOWDOWN SPIKE/0600	SHOWDOWN SPIKE/2100	
E-73 T1 DUMP TRK	08/03	TANNER CLONINGER	1	SHOWDOWN SPIKE/0600	SHOWDOWN SPIKE/2100	
E-81 T1 DUMP TRK2	08/03	MATT FULLER	2	SHOWDOWN SPIKE/0600	SHOWDOWN SPIKE/2100	
8. Division/Group Communication Summary						
Function	Channel	RX Frequency N/W	RX Tone/NAC	TX Frequency N/W	TX Tone/NAC	Mode
COMMAND	6	173.8125	107.2	168.4750	107.2	A
COMMAND	7	173.0375	107.2	167.3250	107.2	A
COMMAND	8	169.8125	107.2	164.6750	107.2	A
TACTICAL	1	168.0500	107.2	168.0500	107.2	A
COMMAND	9	171.5000	107.2	164.0000	156.7	A
AIR TO GROUND	13	166.6125		166.6125		A
9. Prepared By (Resource Unit Leader)		Approved By (Planning Section Chief)		Date	Time	
LAILA LIENESCH, RESL		CAROL O'BRYAN, PSC2		07/26/2021	2044	

Division/Group Assignment List (ICS 204 WF)
Controlled Unclassified Information//Basic

1. Incident Name:			3.			
DIVIDE COMPLEX - BALSINGER			Branch:		Division/Group	
2. Operational Period: DAY - NIGHT			III		I	
Date/Time From: 07/28/2021 0600	WED	Date/Time To: 07/29/2021 2100				THU
4. Operations Personnel						
BRANCH DIRECTOR		JOSH GRAHAM		FIELD OPERATIONS CHIEF TYLER VAN ORMER BERTE PLANTE (T)		
LEAD OPERATIONS CHIEF		JEFF SCHARDT		PLANNING OPERATIONS CHIEF SHAWN NAGLE KEVIN GRODI (T)		
DIVISION/GROUP SUPERVISOR		GREG SALANSKY MATT MOE (T)				
5. Resources Assigned this Period						
Strike Team / Task Force / Resource Designator		LWD	Leader	Number Persons	Drop Off PT./Time	Pick Up PT./Time
O-3.65 SOF2		08/04	LARRY HOLSOMBACK	1	SHOWDOWN SPIKE/0600	SHOWDOWN SPIKE/2100
E-55 AMBU *** ROVING		07/31	KALILOCAY WILLIE	2	SHOWDOWN SPIKE/0600	SHOWDOWN SPIKE/2100
O-37 EMTF		07/30	EMMA KASHIAN	1	SHOWDOWN SPIKE/0600	SHOWDOWN SPIKE/2100
READ - LOCAL			CORY GARDIPEE	1	SHOWDOWN SPIKE/0600	SHOWDOWN SPIKE/2100
ARCH - LOCAL			JOSH UECKER	1	SHOWDOWN SPIKE/0600	SHOWDOWN SPIKE/2100
6. Control Operations/Work Assignments:						
<p>TASK: Implement tactics to keep fire North of Divide Road.</p> <p>PURPOSE: Ensure fire activity does not get established South of Divide Road.</p> <p>END STATE: Fire activity will be kept North of Divide Road.</p>						
7. Special Instructions:						
<p>Spike Camp is located at Showdown Ski Resort. Minimize impact to the Belt Creek RD. Adhere to food storage order.</p> <p>Trigger points currently for EVACUATION - Tillinghast Creek, FR839, Goblin Gulch for communities to the North and East of the fire.</p> <p>** IN THE EVENT OF AN IWI: 0600 - 2100 - CONTACT DIVIDE COMPLEX COMMUNICATIONS AFTER 2100 - CONTACT HELENA DISPATCH VIA RADIO CH9 BIG BALD, OR CH 10 MONUMENT. IF UNREACHABLE CONTACT VIA PHONE 406-444-4242.</p>						
8. Division/Group Communication Summary						
Function	Channel	RX Frequency N/W	RX Tone/NAC	TX Frequency N/W	TX Tone/NAC	Mode
COMMAND	6	173.8125	107.2	168.4750	107.2	A
COMMAND	7	173.0375	107.2	167.3250	107.2	A
COMMAND	8	169.8125	107.2	164.6750	107.2	A
TACTICAL	1	168.0500	107.2	168.0500	107.2	A
COMMAND	9	171.5000	107.2	164.0000	156.7	A
AIR TO GROUND	13	166.6125		166.6125		A
9. Prepared By (Resource Unit Leader)			Approved By (Planning Section Chief)		Date	Time
LAILA LIENESCH, RESL			CAROL O'BRYAN, PSC2		07/26/2021	2044

Division/Group Assignment List (ICS 204 WF)
Controlled Unclassified Information//Basic

1. Incident Name:				3.			
DIVIDE COMPLEX - BALSINGER				Branch:		Division/Group	
2. Operational Period: DAY - NIGHT				III		T	
Date/Time From: 07/28/2021 0600 WED		Date/Time To: 07/29/2021 2100 THU					
4. Operations Personnel							
BRANCH DIRECTOR		JOSH GRAHAM		FIELD OPERATIONS CHIEF		TYLER VAN ORMER BERT PLANTE (T)	
LEAD OPERATIONS CHIEF		JEFF SCHARDT		PLANNING OPERATIONS CHIEF		SHAWN NAGLE KEVIN GRODI (T)	
DIVISION/GROUP SUPERVISOR		DANNY GORE EVAN HAUGAN (T)					
5. Resources Assigned this Period							
Strike Team / Task Force / Resource Designator		LWD	Leader	Number Persons	Drop Off PT./Time	Pick Up PT./Time	
O-13 HEQB		08/03	MATT KLINDT	1	SHOWDOWN SPIKE/0600	SHOWDOWN SPIKE/2100	
O-90 HEQB		08/01	EVAN KARP	1	SHOWDOWN SPIKE/0600	SHOWDOWN SPIKE/2100	
E-93 T3 ENG CASTLE MOUNTAIN FIRE		08/07	JOHN TILER	3	SHOWDOWN SPIKE/0600	SHOWDOWN SPIKE/2100	
E-47 T4 ENG CASTLE MOUNTAIN		08/01	BLANE FIFIELD	3	SHOWDOWN SPIKE/0600	SHOWDOWN SPIKE/2100	
E-10 T6 ENG BISHOP ENTERPRISES		08/09	RANDY HAWLEY	3	SHOWDOWN SPIKE/0600	SHOWDOWN SPIKE/2100	
E-12 T6 ENG PEANUT PIE		07/26	GARY HALL MATSON	3	SHOWDOWN SPIKE/0600	SHOWDOWN SPIKE/2100	
E-52 T2 SKD GRIZZLY		08/01	BRAD SUTTON	2	SHOWDOWN SPIKE/0600	SHOWDOWN SPIKE/2100	
E-51 T2 SKD GRIZZLY		08/01	JOSH BURDEN	2	SHOWDOWN SPIKE/0600	SHOWDOWN SPIKE/2100	
E-49 T1 FELB		08/01	JESSE SHERYL	2	SHOWDOWN SPIKE/0600	SHOWDOWN SPIKE/2100	
E-76 T1 FELB JOHN STITT CONTRACTING		08/04	JOHN STITT	1	SHOWDOWN SPIKE/0600	SHOWDOWN SPIKE/2100	
E-79 LOG DENBOER LOGGING		08/04	WILLIE DENBOER	2	SHOWDOWN SPIKE/0600	SHOWDOWN SPIKE/2100	
E-54 T2 CHIP COLORADO		08/02	ERAN MCARTHUR	3	SHOWDOWN SPIKE/0600	SHOWDOWN SPIKE/2100	
E-77 T1 CHIP S&W DISASTER SUPPORT		08/05	JOSEPH HATCH	3	SHOWDOWN SPIKE/0600	SHOWDOWN SPIKE/2100	
E-1 T2 WAT LEVIATHAN, INC.		07/25	TRACY SCOTT	2	SHOWDOWN SPIKE/0600	SHOWDOWN SPIKE/2100	
E-64 T2 WAT RMFS		08/01	RANDY WALKER	1	SHOWDOWN SPIKE/0600	SHOWDOWN SPIKE/2100	
8. Division/Group Communication Summary							
Function	Channel	RX Frequency N/W	RX Tone/NAC	TX Frequency N/W	TX Tone/NAC	Mode	
COMMAND	6	173.8125	107.2	168.4750	107.2	A	
COMMAND	7	173.0375	107.2	167.3250	107.2	A	
COMMAND	8	169.8125	107.2	164.6750	107.2	A	
TACTICAL	3	168.6000	107.2	168.6000	107.2	A	
COMMAND	9	171.5000	107.2	164.0000	156.7	A	
AIR TO GROUND	13	166.6125		166.6125		A	
9. Prepared By (Resource Unit Leader)			Approved By (Planning Section Chief)		Date	Time	
LAILA LIENESCH, RESL			CAROL O'BRYAN, PSC2		07/26/2021	2044	

Division/Group Assignment List (ICS 204 WF)
Controlled Unclassified Information//Basic

1. Incident Name:			3.			
DIVIDE COMPLEX - BALSINGER			Branch:		Division/Group	
2. Operational Period: DAY - NIGHT			III		T	
Date/Time From: 07/28/2021 0600 WED	Date/Time To: 07/29/2021 2100 THU					
4. Operations Personnel						
BRANCH DIRECTOR		JOSH GRAHAM		FIELD OPERATIONS CHIEF TYLER VAN ORMER BERT PLANTE (T)		
LEAD OPERATIONS CHIEF		JEFF SCHARDT		PLANNING OPERATIONS CHIEF SHAWN NAGLE KEVIN GRODI (T)		
DIVISION/GROUP SUPERVISOR		DANNY GORE EVAN HAUGAN (T)				
5. Resources Assigned this Period						
Strike Team / Task Force / Resource Designator		LWD	Leader	Number Persons	Drop Off PT./Time	Pick Up PT./Time
O-3.65 SOF2		08/04	LARRY HOLSOMBACK	1	SHOWDOWN SPIKE/0600	SHOWDOWN SPIKE/2100
E-55 AMBU *** ROVING			KALILOCAY WILLIE	2	SHOWDOWN SPIKE/0600	SHOWDOWN SPIKE/2100
READ - LOCAL			JUSTINA DUMONT	1	SHOWDOWN SPIKE/0600	SHOWDOWN SPIKE/2100
READ - LOCAL			JASON OLTROGGE	1	SHOWDOWN SPIKE/0600	SHOWDOWN SPIKE/2100
6. Control Operations/Work Assignments:						
<p>TASK: Implement tactics to keep fire West of Belt Park. PURPOSE: Ensure fire activity does not get established within and East of Belt Park. END STATE: Fire activity will be kept West of Belt Park.</p>						
7. Special Instructions:						
<p>Spike Camp is located at Showdown Ski Resort. Minimize impact to the Belt Creek RD. Adhere to food storage order.</p> <p>Trigger points currently for EVACUATION - Tillinghast Creek, FR839, Goblin Gulch for communities to the North and East of the fire.</p> <p>** IN THE EVENT OF AN IWI: 0600 - 2100 - CONTACT DIVIDE COMPLEX COMMUNICATIONS AFTER 2100 - CONTACT HELENA DISPATCH VIA RADIO CH9 BIG BALD, OR CH 10 MONUMENT. IF UNREACHABLE CONTACT VIA PHONE 406-444-4242.</p>						
8. Division/Group Communication Summary						
Function	Channel	RX Frequency N/W	RX Tone/NAC	TX Frequency N/W	TX Tone/NAC	Mode
COMMAND	6	173.8125	107.2	168.4750	107.2	A
COMMAND	7	173.0375	107.2	167.3250	107.2	A
COMMAND	8	169.8125	107.2	164.6750	107.2	A
TACTICAL	3	168.6000	107.2	168.6000	107.2	A
COMMAND	9	171.5000	107.2	164.0000	156.7	A
AIR TO GROUND	13	166.6125		166.6125		A
9. Prepared By (Resource Unit Leader)			Approved By (Planning Section Chief)		Date	Time
LAILA LIENESCH, RESL			CAROL O'BRYAN, PSC2		07/26/2021	2044

Division/Group Assignment List (ICS 204 WF)
Controlled Unclassified Information//Basic

1. Incident Name:		3.	
DIVIDE COMPLEX - BALSINGER		Branch:	Division/Group
2. Operational Period: DAY - NIGHT		III	U
Date/Time From: 07/28/2021 0600 WED	Date/Time To: 07/29/2021 2100 THU		

4. Operations Personnel			
BRANCH DIRECTOR	JOSH GRAHAM	FIELD OPERATIONS CHIEF	TYLER VAN ORMER BERT PLANTE (T)
LEAD OPERATIONS CHIEF	JEFF SCHARDT	PLANNING OPERATIONS CHIEF	SHAWN NAGLE KEVIN GRODI (T)
DIVISION/GROUP SUPERVISOR	BRIAN KEATING GABRIEL TEMPLETON (T)		

5. Resources Assigned this Period					
Strike Team / Task Force / Resource Designator	LWD	Leader	Number Persons	Drop Off PT./Time	Pick Up PT./Time
UNSTAFFED					

6. Control Operations/Work Assignments:

TASK: Develop and Implement tactics to keep fire moving North of Trail 336 Management Action Point (MAP) #7.
PURPOSE: Ensure fire activity does not get established North of Trail 336 (MAP#7).
END STATE: Fire activity will be kept South of Trail 335 (MAP#7).

7. Special Instructions:

**** IN THE EVENT OF AN IWI:**
0600 - 2100 - CONTACT DIVIDE COMPLEX COMMUNICATIONS
AFTER 2100 - CONTACT HELENA DISPATCH VIA RADIO CH9 BIG BALD, OR CH 10 MONUMENT.
IF UNREACHABLE CONTACT VIA PHONE 406-444-4242.

8. Division/Group Communication Summary						
Function	Channel	RX Frequency N/W	RX Tone/NAC	TX Frequency N/W	TX Tone/NAC	Mode
COMMAND	7	173.0375	107.2	167.3250	107.2	A
COMMAND	8	169.8125	107.2	164.6750	107.2	A
TACTICAL	5	166.7750	107.2	166.7750	107.2	A
COMMAND	6	173.8125	107.2	168.4750	107.2	A
COMMAND	9	171.5000	107.2	164.0000	156.7	A
AIR TO GROUND	13	166.6125		166.6125		A

9. Prepared By (Resource Unit Leader)	Approved By (Planning Section Chief)	Date	Time
LAILA LIENESCH, RESL	CAROL O'BRYAN, PSC2	07/26/2021	2044

Division/Group Assignment List (ICS 204 WF)
Controlled Unclassified Information//Basic

1. Incident Name:			3.			
DIVIDE COMPLEX - BALSINGER			Branch:		Division/Group	
2. Operational Period: DAY - NIGHT			III		IA	
Date/Time From: 07/28/2021 0600 WED	Date/Time To: 07/29/2021 2100 THU					
4. Operations Personnel						
BRANCH DIRECTOR JOSH GRAHAM		FIELD OPERATIONS CHIEF TYLER VAN ORMER BERT PLANTE (T)				
LEAD OPERATIONS CHIEF JEFF SCHARDT		PLANNING OPERATIONS CHIEF SHAWN NAGLE KEVIN GRODI (T)				
DIVISION/GROUP SUPERVISOR						
5. Resources Assigned this Period						
Strike Team / Task Force / Resource Designator		LWD	Leader	Number Persons	Drop Off PT./Time	Pick Up PT./Time
O-80 TFLD		07/30	MIKE WILLIARDSON	1	SHOWDOWN SPIKE/0600	SHOWDOWN SPIKE/2100
T2 HC MODULE BELT CREEK - LOCAL			JOE HANSON	12	SHOWDOWN SPIKE/0600	SHOWDOWN SPIKE/2100
E-75 T3 ENG CASTLE MOUNTAIN		07/02	SCOTT MCHENRY	3	SHOWDOWN SPIKE/0600	SHOWDOWN SPIKE/2100
E-74 T6 ENG DS FIRE		08/02	BILLIE SMOCK	3	SHOWDOWN SPIKE/0600	SHOWDOWN SPIKE/2100
E-39 T6 ENG DESERT HILLS FD		08/02	JASON SAYRE	3	SHOWDOWN SPIKE/0600	SHOWDOWN SPIKE/2100
E-38 T6 ENG LOOMIS FIRE **		08/03	TAYLOR EASLEY	3	SHOWDOWN SPIKE/0600	SHOWDOWN SPIKE/2100
T6 ENG 631 - LOCAL			BOB BUNDY	3	SHOWDOWN SPIKE/0600	SHOWDOWN SPIKE/2100
E-4 T3 WAT STERLING		07/24	DUANE TURK	1	HELIBASE/0600	HELIBASE/2100
6. Control Operations/Work Assignments:						
TASK: Serve as primary responding suppression resources to any initial attack within the Temporary Flight Restrictions (TFR) as identified in the Delegation of Authority.						
PURPOSE: Keep fire activity within the parameters of initial attack fires.						
END STATE: Fire is at least 90% contained and has not grown in size for one operational period.						
7. Special Instructions:						
Stage at Showdown Ski Resort						
E-4 WAT Sterling will stage at Helibase						
** E-38 ENG Loomis Fire on loan to American Fork						
8. Division/Group Communication Summary						
Function	Channel	RX Frequency N/W	RX Tone/NAC	TX Frequency N/W	TX Tone/NAC	Mode
COMMAND	6	173.8125	107.2	168.4750	107.2	A
COMMAND	7	173.0375	107.2	167.3250	107.2	A
COMMAND	8	169.8125	107.2	164.6750	107.2	A
TACTICAL	2	168.2000	107.2	168.2000	107.2	A
COMMAND	9	171.5000	107.2	164.0000	156.7	A
AIR TO GROUND	13	166.6125		166.6125		A
9. Prepared By (Resource Unit Leader)			Approved By (Planning Section Chief)		Date	Time
LAILA LIENESCH, RESL			CAROL O'BRYAN, PSC2		07/26/2021	2044

Division/Group Assignment List (ICS 204 WF)
Controlled Unclassified Information//Basic

1. Incident Name:		3.	
DIVIDE COMPLEX - BALSINGER		Branch: III	Division/Group IA
2. Operational Period: DAY - NIGHT			
Date/Time From: 07/28/2021 0600	WED	Date/Time To: 07/29/2021 2100	THU

4. Operations Personnel			
BRANCH DIRECTOR	JOSH GRAHAM	FIELD OPERATIONS CHIEF	TYLER VAN ORMER BERT PLANTE (T)
LEAD OPERATIONS CHIEF	JEFF SCHARDT	PLANNING OPERATIONS CHIEF	SHAWN NAGLE KEVIN GRODI (T)
DIVISION/GROUP SUPERVISOR			

7. Special Instructions:

**** IN THE EVENT OF AN IWI:**

0600 - 2100 - CONTACT DIVIDE COMPLEX COMMUNICATIONS

AFTER 2100 - CONTACT HELENA DISPATCH VIA RADIO CH9 BIG BALD, OR CH 10 MONUMENT.

IF UNREACHABLE CONTACT VIA PHONE 406-444-4242.

8. Division/Group Communication Summary						
Function	Channel	RX Frequency N/W	RX Tone/NAC	TX Frequency N/W	TX Tone/NAC	Mode
COMMAND	6	173.8125	107.2	168.4750	107.2	A
COMMAND	7	173.0375	107.2	167.3250	107.2	A
COMMAND	8	169.8125	107.2	164.6750	107.2	A
TACTICAL	2	168.2000	107.2	168.2000	107.2	A
COMMAND	9	171.5000	107.2	164.0000	156.7	A
AIR TO GROUND	13	166.6125		166.6125		A
9. Prepared By (Resource Unit Leader)		Approved By (Planning Section Chief)		Date	Time	
LAILA LIENESCH, RESL		CAROL O'BRYAN, PSC2		07/26/2021	2044	

Division/Group Assignment List (ICS 204 WF)
Controlled Unclassified Information//Basic

1. Incident Name:			3.			
DIVIDE COMPLEX - BALSINGER			Branch:		Division/Group	
2. Operational Period: DAY - NIGHT			III		STRUCTURE	
Date/Time From: 07/28/2021 0600	WED	Date/Time To: 07/29/2021 2100				THU
4. Operations Personnel						
BRANCH DIRECTOR		JOSH GRAHAM		FIELD OPERATIONS CHIEF		
				TYLER VAN ORMER BERT PLANTE (T)		
LEAD OPERATIONS CHIEF		JEFF SCHARDT		PLANNING OPERATIONS CHIEF		
				SHAWN NAGLE KEVIN GRODI (T)		
DIVISION/GROUP SUPERVISOR		TK KENNEDY				
5. Resources Assigned this Period						
Strike Team / Task Force / Resource Designator		LWD	Leader	Number Persons	Drop Off PT./Time	Pick Up PT./Time
O-16 TFLD (T)		07/27	AARON STROBLE	1	SHOWDOWN SPIKE/0600	SHOWDOWN SPIKE/2100
O-140 STEN (T)		08/07	JUSTIN HOLSOMBACK	1	SHOWDOWN SPIKE/0600	SHOWDOWN SPIKE/2100
O-31 FALM JAMISON		08/02	SEAN HICKEY	2	SHOWDOWN SPIKE/0600	SHOWDOWN SPIKE/2100
E-45 T3 ENG RMFS C-5		08/08	GLENN NUTT	3	SHOWDOWN SPIKE/0600	SHOWDOWN SPIKE/2100
E-42 T4 ENG CASTLE MOUNTAIN		07/31	RHONDINA TSOSIE	3	SHOWDOWN SPIKE/0600	SHOWDOWN SPIKE/2100
E-15 T6 ENG NORTHERN UTAH FIRE		08/07	COREY STONE	3	SHOWDOWN SPIKE/0600	SHOWDOWN SPIKE/2100
E-17 T6 ENG UTAH FIRE COMPANY		08/07	JOHN BEAL	2	SHOWDOWN SPIKE/0600	SHOWDOWN SPIKE/2100
E-16 T6 ENG EAGLE 6		08/07	DENNIS BARCUS	3	SHOWDOWN SPIKE/0600	SHOWDOWN SPIKE/2100
E-18 T6 ENG RMFS		08/07	COLE STANFORD	3	SHOWDOWN SPIKE/0600	SHOWDOWN SPIKE/2100
E-31 T2 WAT BUTLER		08/02	NICK DOLE	1	SHOWDOWN SPIKE/0600	SHOWDOWN SPIKE/2100
E-103 T2 WAT CASTLE MOUNTAIN		08/09		1	SHOWDOWN SPIKE/0600	SHOWDOWN SPIKE/2100
E-105 T2 WAT CASTLE MOUNTAIN		08/09		1	SHOWDOWN SPIKE/0600	SHOWDOWN SPIKE/2100
O-55 SOF2		08/09	CHRIS FARINETTI	1	SHOWDOWN SPIKE/0600	SHOWDOWN SPIKE/2100
O-30 EMPF		07/30	JOE DECKER	1	SHOWDOWN SPIKE/0600	SHOWDOWN SPIKE/2100
8. Division/Group Communication Summary						
Function	Channel	RX Frequency N/W	RX Tone/NAC	TX Frequency N/W	TX Tone/NAC	Mode
COMMAND	6	173.8125	107.2	168.4750	107.2	A
COMMAND	7	173.0375	107.2	167.3250	107.2	A
COMMAND	8	169.8125	107.2	164.6750	107.2	A
TACTICAL	4	166.7250	107.2	166.7250	107.2	A
COMMAND	9	171.5000	107.2	164.0000	156.7	A
AIR TO GROUND	13	166.6125		166.6125		A
9. Prepared By (Resource Unit Leader)			Approved By (Planning Section Chief)		Date	Time
LAILA LIENESCH, RESL			CAROL O'BRYAN, PSC2		07/26/2021	2044

Division/Group Assignment List (ICS 204 WF)
Controlled Unclassified Information//Basic

1. Incident Name:		3.				
DIVIDE COMPLEX - BALSINGER		Branch:		Division/Group		
2. Operational Period: DAY - NIGHT		III		STRUCTURE		
Date/Time From: 07/28/2021 0600 WED	Date/Time To: 07/29/2021 2100 THU					
4. Operations Personnel						
BRANCH DIRECTOR	JOSH GRAHAM	FIELD OPERATIONS CHIEF	TYLER VAN ORMER BERT PLANTE (T)			
LEAD OPERATIONS CHIEF	JEFF SCHARDT	PLANNING OPERATIONS CHIEF	SHAWN NAGLE KEVIN GRODI (T)			
DIVISION/GROUP SUPERVISOR	TK KENNEDY					
5. Resources Assigned this Period						
Strike Team / Task Force / Resource Designator	LWD	Leader	Number Persons	Drop Off PT./Time	Pick Up PT./Time	
6. Control Operations/Work Assignments:						
<p>TASK: Continue with structure assessments and mitigation measures within Division I and Division T of the Balsinger Fire.</p> <p>PURPOSE: Ensure any threats to structures are mitigated.</p> <p>END STATE: Threats to structures within Division I and Division T of the Balsinger Fire will be mitigated.</p>						
7. Special Instructions:						
<p>Trigger points currently for EVACUATION - Tillinghast Creek, FR839, Goblin Gulch for communities to the North and East of the fire.</p> <p>** IN THE EVENT OF AN IWI:</p> <p>0600 - 2100 - CONTACT DIVIDE COMPLEX COMMUNICATIONS</p> <p>AFTER 2100 - CONTACT HELENA DISPATCH VIA <i>RADIO CH9 BIG BALD, OR CH 10 MONUMENT.</i></p> <p>IF UNREACHABLE CONTACT VIA PHONE 406-444-4242.</p>						
8. Division/Group Communication Summary						
Function	Channel	RX Frequency N/W	RX Tone/NAC	TX Frequency N/W	TX Tone/NAC	Mode
COMMAND	6	173.8125	107.2	168.4750	107.2	A
COMMAND	7	173.0375	107.2	167.3250	107.2	A
COMMAND	8	169.8125	107.2	164.6750	107.2	A
TACTICAL	4	166.7250	107.2	166.7250	107.2	A
COMMAND	9	171.5000	107.2	164.0000	156.7	A
AIR TO GROUND	13	166.6125		166.6125		A
9. Prepared By (Resource Unit Leader)		Approved By (Planning Section Chief)		Date	Time	
LAILA LIENESCH, RESL		CAROL O'BRYAN, PSC2		07/26/2021	2044	

Division/Group Assignment List (ICS 204 WF)
Controlled Unclassified Information//Basic

1. Incident Name:				3.		
DIVIDE COMPLEX - BALSINGER				Branch:		Division/Group
2. Operational Period: DAY - NIGHT				III		NIGHT
Date/Time From: 07/28/2021 0600 WED		Date/Time To: 07/29/2021 2100 THU				
4. Operations Personnel						
BRANCH DIRECTOR		JOSH GRAHAM		FIELD OPERATIONS CHIEF		TYLER VAN ORMER BERT PLANTE (T)
LEAD OPERATIONS CHIEF		JEFF SCHARDT		PLANNING OPERATIONS CHIEF		SHAWN NAGLE KEVIN GRODI (T)
DIVISION/GROUP SUPERVISOR						
5. Resources Assigned this Period						
Strike Team / Task Force / Resource Designator		LWD	Leader	Number Persons	Drop Off PT./Time	Pick Up PT./Time
O-17 TFLD (T)		07/27	JASON O'NEAL	1	SHOWDOWN SPIKE/1800	SHOWDOWN SPIKE/1000
E-46 T4 ENG FMFS		07/31	SHANE STREHLE	3	SHOWDOWN SPIKE/1800	SHOWDOWN SPIKE/1000
E-40 T6 ENG GREEN VALLEY FD		08/03	MIKE CARRAFA	3	SHOWDOWN SPIKE/1800	SHOWDOWN SPIKE/1000
E-41 T6 ENG FLAME CHASERS		08/01	EDWIN HILL	3	SHOWDOWN SPIKE/1800	SHOWDOWN SPIKE/1000
6. Control Operations/Work Assignments:						
<p>TASK: Monitor and implement tactics to hold containment lines during nighttime hours. PURPOSE: Ensure daytime tactics implemented continue to mitigate any threats. END STATE: Fire will be kept within the containment lines.</p>						
7. Special Instructions:						
<p>** IN THE EVENT OF AN IWI: 0600 - 2100 - CONTACT DIVIDE COMPLEX COMMUNICATIONS AFTER 2100 - CONTACT HELENA DISPATCH VIA RADIO CH9 BIG BALD, OR CH 10 MONUMENT. IF UNREACHABLE CONTACT VIA PHONE 406-444-4242.</p>						
8. Division/Group Communication Summary						
Function	Channel	RX Frequency N/W	RX Tone/NAC	TX Frequency N/W	TX Tone/NAC	Mode
COMMAND	6	173.8125	107.2	168.4750	107.2	A
COMMAND	7	173.0375	107.2	167.3250	107.2	A
COMMAND	8	169.8125	107.2	164.6750	107.2	A
TACTICAL	3	168.6000	107.2	168.6000	107.2	A
COMMAND	9	171.5000	107.2	164.0000	156.7	A
AIR TO GROUND	13	166.6125		166.6125		A
9. Prepared By (Resource Unit Leader)			Approved By (Planning Section Chief)		Date	Time
LAILA LIENESCH, RESL			CAROL O'BRYAN, PSC2		07/26/2021	2044

AIR OPERATIONS SUMMARY

Prepared By: Tim Elder

Prepared Date: 7.26.21

Prepared Time: 1800

INCIDENT NAME: American Fork/Divide Complex	OPS PERIOD DATE: July 27, 2021	START TIME: 0800	END TIME: 2000	Sunrise: 0600	Sunset: 2100
3. REMARKS (Safety Notes, Hazards, and Air Operations Special Equipment, etc.): Hazards – Poor Visibility due to smoke, anticipate general and fire aviation traffic. Use caution when utilizing non-towered airports. See and Avoid.					
Helicopter requests can be made directly to the helibase via Command 1 for Ellis & Balsinger; requests from American Fork should use Sunlight repeater.					
MEDEVAC: Short Haul – N401HQ - Josh Ingles 406-461-4433 Air Ambulance Frequency - "Tan" 155.3400 TX tone 156.7		TFR #: American Fork 1/1480 7nm 12,500 msl Balsinger 1/6366 7 nm 11,000 msl			

PERSONNEL	NAME	PHONE #	FREQUENCIES	AM	FM	FIXED-WING- Type/Make-Model/ N#/ Base
AOBD	Tim Elder	863-610-0096	A/G Ellis		168.7375	AIRTANKERS – Order through Air Attack if on scene, otherwise through AOBD.
ASGS (T)	Brian Butler	970-946-8068	A/G Balsinger - A/A TFR/FW - A/A RW	125.125 134.675	166.6125	LEAD PLANES- Available through dispatch.
HEBM	John Nobles	239-777-8455	A/G American Fork - A/A TFR/FW - A/A RW	119.100 128.250	169.1500	AERIAL SUPERVISION-N700FW (Kodiak). Relief ATGS avail on request through dispatch.
HEBM (T)	Josh Bardwell	936-546-1915				SEATS- Available through Dispatch
ATGS	Steve Little	828-778-2077				

HELICOPTERS

FAA N#	T	MAKE/ MODEL	BASE	START	AVAIL	REMARKS	FAA N#	T	MAKE/ MODEL	BASE	START	AVAIL	REMARKS
N948CH	1	CH-47	7S6	0800	0900	R1 Prepo	N406RG	1	Puma	HLN	0800	0900	R1 Prepo
N353RC	2	UH-1H	7S6	0800	0900	R1 Prepo	N4247V	2	58T	HLN	0800	0900	R1 Prepo
N210MA	2	Bell 210	7S6	0800	0900	R1 Prepo	AS350B3	3		HLN	0800	0900	Forest Ship
H-14X	3	Bell 407	7S6	0800	0900	EU							

TASK/ MISSION/ ASSIGNMENT (Type/ function includes: Air Tactical, Retardant, Recon, Personnel Transport, Bucket Operations, SAR, etc.	NAME OF PERSONNEL OR CARGO (if applicable) or instructions for tactical aircraft	MISSION START	FLY FROM	FLY TO
Recon	As Requested	As Requested		
Bucket Support / Supply Missions	As Requested	As Requested		
Personnel Transport	As Requested	As Requested		
Aerial Supervision	As Requested	As Requested		

HEALTH AND SAFETY MESSAGE

SAFETY starts with *YOU*

We are ALL accountable for SAFE behaviors

INCIDENT: **Divide Complex/American Fork Fire**

DATE: July 27, 2021

Major Hazards and Risks: Structure Protection, and Hydration

Structure Protection: Wildland Urban Interface (WUI): Structure firefighting is inherently dangerous because it involves indirect firefighting. Refer to page 12 of your IRPG for additional information. The primary consideration of any operation is to assure firefighter and public safety. It is a must to assess potential fire behavior, ingress/egress routes, nature of the threat, hazardous materials, and available water supplies before engaging in the protection of any structure.

Do not commit to stay and protect a structure unless a safety zone for firefighters and equipment has been identified at the structure during size-up and triage. Move to the nearest safety zone, let the fire front pass, and return as soon as conditions allow.

Hydration: Hot temperatures are predicted for today. Remember to pre-hydrate in the morning and evening hours. Drink plenty of water and mix in a sports drink throughout the day. Additionally, eating fruit will assist with staying hydrated.



6. INSTRUCTIONS AND ASSIGNMENTS NOT CLEAR

Medical Incident Report (IWI)

For a non-emergency incident (green priority), work through the chain of command to provide needed care to patient.

For a medical emergency (yellow or red priority), the incident commander (IC) of the medical emergency, will contact Divide Communications by radio.

The medical incident IC will announce they have a “medical emergency”.

Use the 8 Line Medical Incident Report found on the last page of the IAP (IRPG page 118) to relay your information to Divide Communications.

For emergencies after hours (2100 or later) contact the Helena Dispatch. (See Special Instructions in your Divisional Group Assignment list for more details).

Divide Complex / American Fork - Tuesday July 27, 2021

8. Location	9. Hazard	6. Control or Abatement Action (Engineering, Administrative, PPE, Avoidance, Education, etc)
All	Air Operations	<ul style="list-style-type: none"> ~ Ensure positive communication with all air resources. ~ Don't plan on air resources for medical transport or resupply. ~ Follow "Aviation Watch-Out Situations" IRPG Pg 46. ~ Refer to "Directing Bucket or Retardant Drops" IRPG Pg 58 . ~ Refer to "Aerial Retardant Safety" IRPG Pg57. ~ Refer to "Aircraft Mishap Response Procedure" IRPG Pg 62.
All	Extreme Fire Behavior	<ul style="list-style-type: none"> ~ Share weather observations with all personnel assigned to division. ~ Establish "Trigger Points" to withdraw. ~ Use "Risk Management" process prior to engaging in suppression actions IRPG Pg 1. ~ Refer to "Common Denominators of Fire Behavior Tragedy Fires" IRPG Pg 5. ~ Refer to "Alignments & Patterns for Dangerous Fire Behavior" IRPG Pg 73
All	Fireline Hazards	<ul style="list-style-type: none"> ~ Refer to "Fire line Location" considerations, IRPG Pg 84 ~ Do not work directly above or below personnel during firing and mop-up operations. ~ Watch for falling and rolling debris on steep slopes. ~ Alert crew personnel of rolling debris by yelling to affected individuals. ~ Position debris that could roll vertically on slope. ~ Avoid stepping over debris that could roll by walking around object. ~ Avoid radiant heat by wearing appropriate PPE correctly. ~ Flag and isolate all HAZMAT and alert all personnel working in Division. ~ Follow WUI recommendations, IRPG Pg 12.
All	Heat Related Illness (HRI)& Dehydration	<ul style="list-style-type: none"> ~ Refer to Heat Related Illness information, IRPG Pg 109 ~ Drink Fluids throughout operational period (6-8 qts/shift). ~ Maintain water/electrolyte ratio of 3 to 1. ~ Carry extra water on line and cache water at drop points. ~ Take Frequent breaks, minimum of 10 minutes every hour. ~ Allow out of area resources time to acclimatize before expecting peak performance.
All	Hazard Trees	<ul style="list-style-type: none"> ~ Follow "Hazard Tree Safety" guidelines, IRPG page 22. ~ Post lookouts, or use a spotter in mop-up areas with personnel. ~ Do not park vehicles or take breaks in high concentrations of hazard trees. ~ Establish trigger points for disengagement during high wind events. ~ Remember that the hazard zone extends a minimum of 2 1/2 tree heights.
All	Mop-up & Suppression Repair	<ul style="list-style-type: none"> ~ Do not work above or below personnel during rehab/mop-up operations. ~ Alert crew personnel of rolling debris by yelling to affected individuals. ~ Position debris that could roll vertically on slope. ~ Wear eye protection.
All	Chain Saw Operations	<ul style="list-style-type: none"> ~ Follow "Hazard Tree Safety" guidelines, IRPG Pg 22 ~ Follow "Procedural Felling Operations" IRPG Pg 85. ~ Look up, Look down, and Look around for hazard tree indicators. ~ Only fell and buck trees within your expertise, and training. ~ Do not fall trees during high wind events. ~ Ensure proper use of all required PPE.

All	Heavy Equipment Operations	<ul style="list-style-type: none"> ~ Refer to "Working with Heavy Equipment" IRPG Pg 86 ~ Ensure communications are established with operators. ~ Use hand signals if other communications are unavailable. ~ Maintain a 300 feet exclusion area around equipment and increase it to 1 1/2 times tree height when in timber. ~ Use a spotter when backing. ~ Avoid working below heavy equipment. ~ Brush Chippers: Ensure that Job Hazard Analysis are reviewed and signed by all crew members working with or around them.
All	Structure Protection & HAZMAT	<ul style="list-style-type: none"> ~ Review "Wildland Urban Interface Firefighting" checklist IRPG Pg 12-16 ~ Use "Structure Assessment" checklist, IRPG Pg 13 ~ Refer to "Structure Hazard Marking System" IRPG Pg 41 ~ Follow "HAZMAT Incident Operations" IRPG Pg 36
All	Driving & Traffic	<ul style="list-style-type: none"> ~ Practice "Defensive Driving" techniques traveling on all roads and city streets. ~ Use spotters when backing. ~ Always use headlights. ~ Yield to pedestrians, wildlife and livestock. ~ Observe posted speed limits. ~ Use the 3 second rule for following distance when driving. ~ Use chock blocks, turn wheels into hill. ~ Avoid distractions (eating, cell phones, and radio). ~ Ensure that windshields are kept clean of dust and bugs.
All	Spike Camp	<ul style="list-style-type: none"> ~ Keep a clean camp. ~ Ensure communications are in place. ~ Review and observe "Line Spike" considerations, IRPG Pg. 95
All	Communications	<ul style="list-style-type: none"> ~ Maintain communication with aviation resources, and suppression organization. ~ Ensure all know frequency and protocol for contacting resources. ~ Utilize the ICS 205. ~ Utilize human repeaters when working in dead spots.
All	Wildlife & Livestock	<ul style="list-style-type: none"> ~ Watch out for wildlife & livestock inside fire area and along roadways. ~ Clean up all food and trash during each operational period. ~ Store all food in bear proof containers or in vehicles. ~ Slowly back away from any wildlife that you encounter.
Branch III	Night Operations	<ul style="list-style-type: none"> ~ Maintain high visibility in work area and wear vest while in roadway. ~ Use glow sticks to mark hazards. ~ Ensure personnel have a personal light (headlamp). ~ Watch for signs of fatigue. ~ Take breaks away from areas of known hazard.

COVID Mitigations and Screening Tool



Maintain Situational Awareness of The Fire Environment: 10 & 18, LCES

- Monitor each other, watch for symptoms (Firefighter Health Screening Tool).
- Never share PPE, UTV & flight helmets, radios, or other equipment
- Implement daily decontamination procedures of apparatus and equipment
- Adjust operational periods to allow for additional COVID-19 logistics.
- Plan for overnight lodging/camping/feeding scenarios that maintain separation from other fire personnel and community

WILDLAND FIRE COVID-19 SCREENING TOOL

Today or in the past 24 hours, have you had any of the following symptoms¹?

Symptom
Cough more than expected?
Shortness of breath or difficulty breathing?
Fever? Chills?
Muscle pain, outside your normal for firefighting?
Sore throat?
New loss of taste or smell?
Fatigue, outside your normal for firefighting?
Headache, outside your normal for firefighting?
Congestion or runny nose, outside your normal for firefighting?
Nausea or vomiting
Diarrhea
<i>* Take temperature with no-touch thermometer, if available *</i>

MEDICAL PLAN (ICS 206 WF)

Incident/Project Name	1. Operational Period
Divide Complex/American Fork	Day Shift / Night Shift July 27, 2021 1800 - July 28, 2021 1000

2. Ambulance Services			
Name	Complete Address	Phone & EMS Frequency	Advanced Life Support (ALS) Yes No
Meagher County Volunteer Ambulance	White Sulphur Springs, MT	406-547-3397 or 911	No
Belt Ambulance (Balsinger Fire Response Area)	Belt, MT	911	No

3. Air Ambulance Services		
Name	Phone	Type of Aircraft & Capability
Mercy Flight (Rotor & Fixed Wing)	800-972-4000	Air Ambulance, NVG Capable. (Use TAN Channel 15 155.3400 for contact with helicopter) For Fixed Wing Transports -Ambo will transport to White Sulphur Springs Airport
Life Flight Network	800-232-0911	Air Ambulance, NVG Capable. (Use TAN Channel 15 155.3400 for contact with helicopter)
Two Bear Rotor	406-758-5610	Rotor- Bell 429 Hoist Capable- NVG Capable. Must be ordered as Medical Transport

4. Hospitals								
Name Complete Address	GPS Datum – WGS 84 Coordinate Standard Degrees Decimal Minutes DD° MM.MMM' N - Lat DD° MM.MMM' W - Long		Travel Time		Phone	Helipad Yes No		Level of Care Facility
	Lat:	Long:	Air	Gnd		Yes	No	
Mtn View Medical Center 16 West Main White Sulphur Springs, MT	N 46° 32.870	W 110° 54.396	10 Min	40 Min	406-547-3321	X		Stabilize & Transfer
St Peters Health 2475 E Broadway St Helena, MT	N 46° 34.939	W 111° 59.764	20 Min	60 Min	406-442-2480	X		Area Trauma Center
Benefis Health System 1101 26 th St S Great Falls, MT	N 47° 29.510	W 111° 15.588	30 Min	120 Min	406-543-7271	X		Level 2 Trauma Center
Univ. Of Utah Health 50 N Medical Dr. Salt Lake City, UT	N 40° 46.361	W 111° 50.240	90+ Min	NA	801-581-2700	X		Designate d Burn Center

5. Division Branch Group	Area Location Capability	
DIVISION I Balsinger	EMS Responders & Capability:	EMTF Emma Kashian (Alpha) EMPF K. Willie, EMTF A. MacArthur
	Equipment Available on Scene:	4x4 Vehicle BLS Kit, 4x4 ALS Ambulance – roving to DIV T
	Medical Emergency Channel:	Divide Communications after 2100 use Big Baldy Channel 9
	ETA for Ambulance to Scene:	
	Air:	25-60 Minutes Including Spin Up Time
	Ground:	30 Minutes to Spike 80 Minutes to Fire
	Approved Helispot:	H1
	Lat:	46.51.497
Long:	110.40.703	

DIVISION T Balsinger	EMS Responders & Capability	EMPF K Willie & EMTF A MacArthur AMBO 1
	Equipment Available on Scene:	4x4 ALS Ambulance – roving to DIV I
	Medical Emergency Channel:	Divide Communications after 2100 use Big Baldy Channel 9
	ETA for Ambulance to Scene:	
	Air:	25-60 Minutes Including Spin Up Time
	Ground:	30 Minutes to Spike 80 Minutes to Fire
	Approved Helispot:	
	Lat:	
Long:		

MEDICAL PLAN (ICS 206 WF)

DIVISION E/Q Ellis	EMS Responders & Capability		
	Equipment Available on Scene:		
	Medical Emergency Channel:		
	ETA for Ambulance to Scene:		
	Air:		
	Ground:		
	Approved Helispot:		
	Lat:		
	Long:		
DIVISION A American Fork	EMS Responders & Capability	EMTF Gabriel Mizrahi , EMTF Wendy Conway	
	Equipment Available on Scene:	BLS 4x4 vehicle, 2 – BLS Kits	
	Medical Emergency Channel:	Divide communications, after 2100 use channel 2 (sunlight repeater – FS system)	
	ETA for Ambulance to Scene:		
	Air:	25-60 Minutes Including Spin Up Time	
	Ground:	30-60 Min dependent on location	
	Approved Helispot:		
	Lat:	46.14.690	
	Long:	110.10.650	
Division M American Fork	EMS Responders & Capability		
	Equipment Available on Scene:		
	Medical Emergency Channel:		
	ETA for Ambulance to Scene:		
	Air:		
	Ground:		
	Approved Helispot:		
	Lat:		
	Long:		
ICP	EMS Responders & Capability	Sherri McDougal MEDL(t)	
	Equipment Available on Scene:	100 Man Kit	
	Medical Emergency Channel:		
	ETA for Ambulance to Scene:		
	Air:	25-60 Minutes Including Spin Up Time	
	Ground:	5-25 Min dependent on volunteer staffing	
	Approved Helispot:		
	Lat:		
	Long:		
6. Prepared By (Medical Unit Leader)		7. Date/Time	8. Reviewed By (Safety Officer)
Sherri McDougal, MEDL (t)		07/26/21 1810	ISI Paul Churchill SOF2

Divide Complex Overnight Medical Incidents will be relayed thru Big Baldy Channel 9 or Monument Channel 10. Please note Dispatch Response is shared overnight and will be initiated from Helena during overnight hours. Complete Medical Incident Report (8 line) per process with responding dispatch center.

American Fork overnight medical incidents will use channel 2 (sunlight repeater on Forest Service system) to Helena Dispatch or call 406-444-4242.

INCIDENT RADIO COMMUNICATIONS PLAN (ICS 205)

Controlled Unclassified Information//Basic

1. Incident Name:		2. Date/Time Prepared:		3. Operational Period:		Date/Time To:					
Divide Complex		Date: 07/26/2021 Time: 1900		Date/Time From: 07/27/2021 0600		Date/Time To: 07/28/2021 0600					
4. Basic Radio Channel Use:											
Zone Group	Ch #	Function	Channel Name/Trunked Radio System Talkgroup	Assignment	RX Freq	RX Tone/NAC	TX Freq	TX Tone/NAC	Mode (A,D, or M)	Remarks	
1	1	Tactical	Tac 1	Div I "Balsinger"	168.0500	107.2	168.0500	107.2	A	Division India "Balsinger"	
1	2	Tactical	Tac 2	IA	168.2000	107.2	168.2000	107.2	A	Initial Attack	
1	3	Tactical	Tac 3	Div T "Balsinger"	168.6000	107.2	168.6000	107.2	A	Division Tango "Balsinger"	
1	4	Tactical	Tac 4	Structure "Balsinger"	166.7250	107.2	166.7250	107.2	A	Structure Division "Balsinger"	
1	5	Tactical	Tac 5	Div E/Q "Ellis" Div U "Balsinger"	166.7750 173.8125	107.2 107.2	166.7750 168.4750	107.2 107.2	A A	Division Echo/Quebec "Ellis" Division Uniform "Balsinger" Air Ops for "Balsinger" & "Ellis" Prohibit L.O. Showdown	
1	6	Command	CMD1	All Division	173.0375	107.2	167.3250	107.2	A	Big Baldy Mtn	
1	7	Command	CMD2	All Division	169.8125	107.2	164.6750	107.2	A	Monument Mtn	
1	8	Command	CMD3	All Division	171.5000	107.2	164.0000	103.5	A	USFS Dispatch Big Baldy "Balsinger"	
1	9	Command	Big Bald	All Division	171.5000	107.2	164.0000	103.5	A	USFS Dispatch Monument	
1	10	Command	Monument	All Division	151.2200	107.2	154.0700	107.2	A		
1	11	Tactical	Yellow		154.0700	107.2	166.6125	107.2	A		
1	12	Tactical	Red		168.7375	107.2	155.3400	107.2	A		
1	13	Air Ground	A/G PRI		168.6125	107.2	155.3400	107.2	A		
1	14	Air Ground	A/G SEC		168.7375	107.2	155.3400	107.2	A		
1	15	Medvac	Tan		168.6250	107.2	110.9	107.2	A	Air Ambulance	
1	16	AIR GUARD	AIR GUARD								
5. Special Instructions: Use Human Repeater When Necessary. All Medical calls through Command Repeaters from 0600-2100 to Divide Communication to Initial an IML NIGHT SHIFT from 2100-0600 call HELENA DISPATCH through Forest Repeaters Ch. 9 or 10 and then call COM1 at 836-707-1832 to Initial IML.											
6. Prepared By (Communications Unit Leader)				Name: SHANNON HERRING				Signature:			
ICS 205				MAP Page				Date/Time: 07/25/21 1900			

Controlled Unclassified
Information//Basic DRAFT

INCIDENT RADIO COMMUNICATIONS PLAN (ICS 205)

Controlled Unclassified Information//Basic

1. Incident Name: American Fork		2. Date/Time Prepared: Date: 07/26/2021 Time: 1730		3. Operational Period: Date/Time From: 07/27/2021 0600 THRU Date/Time To: 07/28/2021 0600							
4. Basic Radio Channel User:											
Zone Group	Ch #	Function	Channel Name/Trunked Radio System Talkgroup	Assignment	RX Freq	RX Tone/NAC	TX Freq	TX Tone/NAC	Mode (A, D, or M)	Remarks	
2	1	CMD	CMD 4		169.7500	107.2	167.1000	107.2	A		
2	2	CMD	SUNLIGHT		171.5000		164.0000	107.2	A		
2	3	Tactical	RED		154.0700		154.0700	131.8	A		
2	4	Tactical	COMMON USE 1	DIV M	168.6125		168.6125	166.7	A		
2	5	Tactical	COMMON USE 2	DIV P	163.7125		163.7125	146.2	A		
2	6	Tactical	LCNF TAC	DIV A	166.9875		166.9875	114.8	A		
2	7	Tactical	YELLOW		151.2200		151.2200	110.9	A		
2	8	Tactical	HEDIR		171.1375		171.1375	107.2	A		
2	9	Tactical	MGHR FIRE 1		154.4000		154.4000	100.0	A		
2	10	RPT	CASCADE LAW		154.7700		155.5800	151.4	A		
2	11	Tactical	MEAGHER DES S		155.0250		155.0250	107.2	A		
2	12	Tactical	MGHR DES RPTR		155.0250		158.7750	107.2	A		
2	13	Air Ground	NIFC AVG		169.1500		169.1500		A	NIFC Air to Ground	
2	14	Air Ground	AVG 52		168.3875		168.3875		A	Local Air to Ground	
2	15	Medivac	Tan		155.3400		155.3400	156.7	A	Air Ambulance	
2	16	AIR GUARD	AIR GUARD		168.6250		168.6250	110.9	A		
5. Special Instructions: Use Human Repeater When Necessary. All Medical calls 0600-2100 use Command 4/Channel 1 to Divide Communications to Initiate IWL. NIGHT SHIFT between 2100 - 0600 use Sunlight Rptr, CH 2 to call HELLENA DISPATCH and then call COM1. - 936-707-1832 to Initiate IWL. Divide Communications Call - 201-401-6806						6. Prepared By (Communications Unit Leader) Name: SHANNON HERRING Signature:					
ICS 205		IAP Page		Date/Time: 07/26/21		1730					

Weed Wash



Mandatory when:

- **Checking in**
- **Moving between fires**
- **Demob**

Located 1.3 miles west of US 89 on Luppold Rd (AKA Cemetery Rd).

Finance

CTRs/Shift Ticket – Please document what fire and division you are working on in the comment section of each CTR or Shift Ticket. This will help us with cost share information on the fire.

Document reason for Hazardous Pay on CTR.

Last working day – please contact finance via email two days prior to your demob day.

Send your CTRs and Shift Tickets to the email below that correlates to fire on your resource order.

2021.divide.finance@firenet.gov

2021.americanfork.finance@firenet.gov

If you are an AD please send your casual hire form to the correct email address above. Use the email address that corresponds to the fire on your resource order.

Finance Remote Processing Procedures

To the right is access to electronic Finance forms. You can access them via the QR code or the URL. On each form are four buttons PRINT, RESET, SAVE and EMAIL. You can complete these forms on your cell phone, tablet or laptop. They are Adobe PDF forms so you will need a PDF reader app on your device. The forms were created on a laptop so the commands in your cell phone and tablet do not allow for the Save and Print functions to work. You will need to use your app's functionality to Save or Print.

Once you have completed the appropriate form for your resource please email to your supervisor for approval.

Supervisors can use their app to apply a signature or just type /s/ your name on the approval line. After approving please email the approved form back to the resource for their record and to the correct finance email:

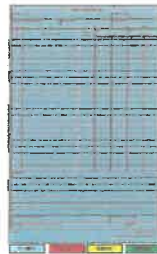
2021.americanfork.finance@firenet.gov

2021.divide.finance@firenet.gov

Resources: Please send photos or electronic copies of Casual hire forms, contracts, Cooperative agreements, Vehicle inspection, Manifests and resource orders to the correct finance email:

2021.americanfork.finance@firenet.gov

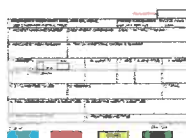
2021.divide.finance@firenet.gov



Crew Time
Report



Shift Ticket



Emergency Fuel
and Oil Ticket



General
Message



Human Resource Message

The mission of the Gold Team is to safely, effectively and efficiently manage the Divide Complex and American Fork Fire by maintaining a team of skilled and productive personnel. During this incident we will strive to successfully complete our mission and achieve our objectives while creating a positive, drug and alcohol free work environment for all assigned incident personnel. Consumption of drugs that alter decision making abilities, such as marijuana and alcohol, is prohibited while assigned to the incident.

The Gold Team fully supports EEO and will not tolerate sexual harassment or any form of discrimination!

All inappropriate behavior will be dealt with promptly. Disciplinary action and reporting back to an individual's home unit will be initiated as necessary.

Please report any incidents of inappropriate behavior to your supervisor, Marty Bentley or myself immediately.

Deborah Beard, Incident Commander



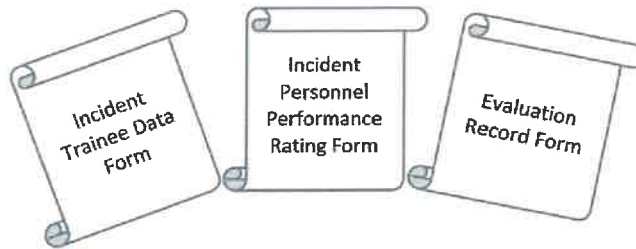
TRAINING MESSAGE

As of 26th e-ISuite show that there are 44 TRAINEES ordered to this Incident.

However, 20 only have checked in with the Incident Training Specialist

Check-in – If you have a position task book (PTB), please scan the QR code or click the link below to initiate the check-in process with the Incident Training Specialist. Please complete the form in its entirety. Upon completion, at your earliest convenience, **please email a copy of your qualification card and position task book cover to Al Hoke at ahoke@gfc.state.ga.us.**

For your convenience, an electronic ICS-225 or ICS-226 and Evaluation Record will be sent to you after you complete the check-in process. Electronic Evaluation Records, Trainee Data Forms can also be provided.



<https://forms.office.com/g/25cqnByg71>

Demob – In order to receive credit for your assignment, you must close out with the Incident Training Specialist prior to departure.

Close out requirements include:

1. Ensure your trainer(s)/evaluator(s) has/have initialed completed tasks in your PTB;
2. Obtain an Incident Performance Rating (please sign in the appropriate block at the bottom of the form);
3. Obtain an Evaluation Record;
4. If evaluator initialed #1 on your Evaluation Record, ensure he/she signs as final evaluator (located on the backside of your PTB cover page);
5. Email all documentation (including item #4, when appropriate) to ahoke@gfc.state.ga.us;
6. Please scan the QR code or click the link below to complete the Incident Trainee Exit Interview with the Incident Training Specialist.



<https://forms.office.com/g/yqtU5x4Cch>



Southern Area Incident Management Gold Team Fire Information

[Divide Complex-Balsinger Fire Information - InciWeb the Incident Information System \(nwcg.gov\)](#)

[Divide Complex-Ellis Fire Information - InciWeb the Incident Information System \(nwcg.gov\)](#)

[American Fork Fire Information - InciWeb the Incident Information System \(nwcg.gov\)](#)

[Helena-Lewis and Clark National Forest - Home | Facebook](#)

[Custer Gallatin National Forest - Home | Facebook](#)

[Helena-Lewis and Clark National Forest - Home \(usda.gov\)](#)

[Custer Gallatin National Forest - Home \(usda.gov\)](#)

Fire Information Line: **406-272-6349** (8 a.m. – 8 p.m.)

Help us tell our story by submitting photos and videos of life on the fireline.

We need your help to capture the shots that show what we're doing and how we're doing it. Please scan the code below to submit. Adding your name and location of the photo is ideal. Any extra information is appreciated, but not mandatory.

We are guests in this area. Be aware that photos posted to personnel accounts may contain sensitive information. Send all photos through Information Officer to ensure they are appropriate and represent the Gold Team and our partners well. Personal protective equipment is required in any photos that will be utilized to tell the story of the fire.

American Fork

Divide Complex



SUBMIT YOUR PHOTOS & VIDEOS

Tentative DEMOB List

Divide Complex and American Fork

INCIDENT NAME	DEMOB DATE	REQ #	RESOURCE NAME	KIND	TRV	CITY	STATE
DIVIDE COMPLEX	07/27/2021	E-3	MEADOW CREEK CONT., LLC	DOZ3	POV	SUPERIOR	MT
DIVIDE COMPLEX	07/27/2021	E-10	BISHOP, MERVIN	ENG6	POV	MALTA	MT
DIVIDE COMPLEX	07/27/2021	E-12	PEANUT PIE ENT.	ENG6	POV	BASIN	MT
DIVIDE COMPLEX	07/27/2021	E-13	PEANUT PIE ENT.	ENG6	POV	BASIN	MT
DIVIDE COMPLEX	07/27/2021	E-34	WINDSOR-SEVERANCE FPD	ENG6	AOV	WINDSOR	CO
DIVIDE COMPLEX	07/27/2021	O-31	JAMISON GEN. LAND MNGMT.	FMOD	AOV	KALISPELL	MT
DIVIDE COMPLEX	07/28/2021	C-5	OREGON WOODS, INC.	HC2	POV	EUGENE	OR
DIVIDE COMPLEX	07/28/2021	E-9	BISHOP, MERVIN	ENG6	POV	MALTA	MT
DIVIDE COMPLEX	07/28/2021	E-14	CONIFER LOGGING INC	DOZ2	POV	LINCOLN	MT
DIVIDE COMPLEX	07/28/2021	E-26	NICK BROWN WILDLAND, LLC	ENG6	POV	GREAT FALLS	MT
DIVIDE COMPLEX	07/28/2021	O-16	STROBEL, AARON	TFLD	AIR	LEXINGTON	KY
DIVIDE COMPLEX	07/28/2021	O-17	O'NEAL, JASON LEE	TFLD	AR	SANFORD	NC
DIVIDE COMPLEX	07/28/2021	O-20	CORBIN, TYLER	HEQB	AOV	DOLOCES	CO
AMERICAN FORK	07/28/2021	O-33	MOTTICE, CORY LOGAN	IMET	AOV	GLASGOW	MT
DIVIDE COMPLEX	07/29/2021	O-46	GOOSMAN, REBECCA	HMGB	AR	MOBILE	AL
DIVIDE COMPLEX	07/30/2021	O-71	FOSNESS, ELDO LUKE	TFLD	AOV	RED LODGE	MT
DIVIDE COMPLEX	07/31/2021	E-27	OSTBERG FIRE SERV.	POT2	POV	BONNER	MT
DIVIDE COMPLEX	07/31/2021	E-28	GRAY WTR THOMAS PETERS	GWT4	POV	WHITEHALL	MT
DIVIDE COMPLEX	07/31/2021	E-43	BOSKET'S PL. AND EXC.	ENG4	POV	KALISPELL	MT
DIVIDE COMPLEX	07/31/2021	E-44	GIST ENGINE - T4	ENG4	POV	CASCADE	MT
DIVIDE COMPLEX	07/31/2021	E-61	DULANEY UCC LLC	WEED	POV	HELENA	MT
DIVIDE COMPLEX	07/31/2021	O-30	BEST PRACTICE MEDICINE LLC	EMPF	POV	BILLINGS	MT
DIVIDE COMPLEX	07/31/2021	O-37	KASHIAN, EMMA	EMTF	POV	HAMILTON	MT
DIVIDE COMPLEX	07/31/2021	O-77	MARKHAM, TODD JAMES	TFLD	AR	MARQUETTE	MI
DIVIDE COMPLEX	07/31/2021	O-80	SCOTT-WILLARDSON, MICHAEL ALLEN	DIVS			

IF YOU ARE FLYING YOU MUST CONTACT DEMOB AT LEAST 3 DAYS BEFORE YOUR DEMOB DATE TO GET A FLIGHT.

On your demob day, or last work day, personnel should:

1. Turn in all supplies, radios and computer equipment checked out from the incident.
2. They should ensure that all Unit Logs and evaluations are submitted to Documentation electronically. 2021.americanfork.docs@firenet.gov
3. Go to the Ground Support Unit for equipment inspections.
4. Go through weed wash and obtain a receipt to verify that the equipment has been cleaned. Return that receipt to demob (this can be done virtually if necessary by emailing a picture of the receipt to: 2021.americanfork.demob@firenet.gov).
5. Go to the Time Unit to complete time and review their final OF-288 or OF-286. This may be done virtually if necessary.
6. Report back to the Demobilization Unit to verify travel information home, including ETD/ETA and RON locations. This can be done virtually if necessary.

Call Jeff DeMatteis, DMOB at 937-506-6181 if you have questions.

Divide Complex American Fork Fires IAP Map

MT-HLF-5079

Approx. 16,378 GIS acres @ 2125

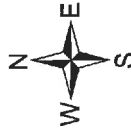
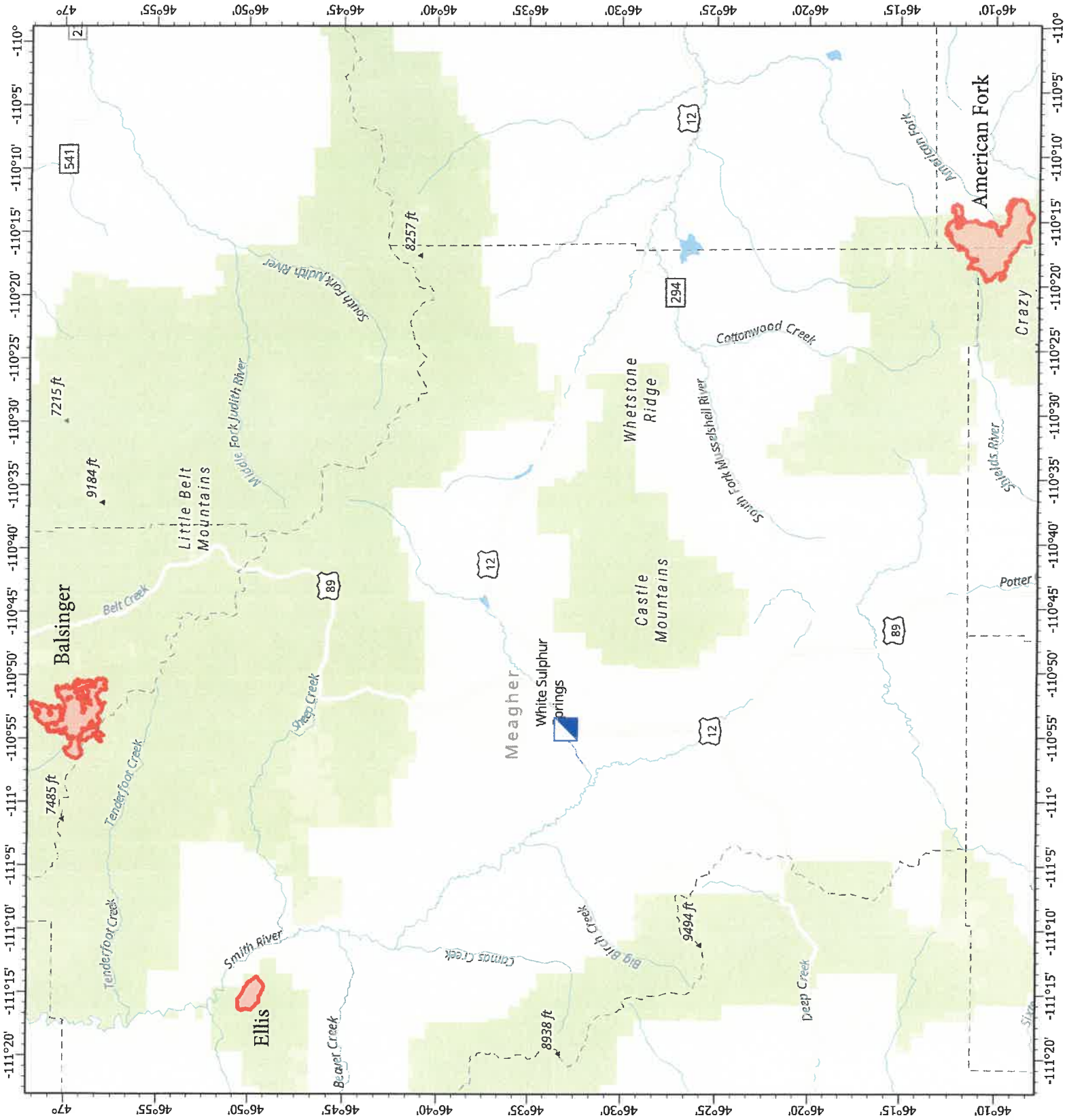
Operational Shift:
7/27/2021



Incident Command Post



Wildfire Daily Fire Perimeter



Created by: SA Gold Team
Date Exported: 7/26/2021 6:57 PM

PHONE LIST - GOLD TEAM - 07262021

Position	Name	Phone Number	Position	Name	Phone Number
COMMAND					
ICT2	Debbie Beard	850-524-9966	FSC2	Reggie Lanier	912-314-1085
ICT2 (t)	Michael Cheek	828-231-2691	FSC2(t)	Jason Gillis	912-314-9233
DPIC	Marty Bentley	423-584-1682	TIME	Laura Wilson	765-427-7564
LOFR	Michael Wright	970-819-2890	COST	Marlene Hudson	850-570-5478
LOFR (t)	Bobby Claybrook	859-490-0653	COMP	Terri McDonald	352-454-5385
LOFR (t)	Jeffrey Gardner	706-260-6296			
Covid	Bradley Cooper	318-451-5074	PLANNING		
PIO2	Michelle Burnett	803-920-6167	PSC2	Carol O'Bryan	903-263-8704
PIO2	Andrew Gray	850-797-4824	PSC2	Thomas Barrett	478-550-6372
PIO2 (t)	Brook Smith	865-603-5217	PSC2 (t)	Jessica Hollingsworth	601-966-0331
PIO2 (t)	Tricia Boles	606-627-5398	RESL	Kelly Russell	850-294-8400
PIO2 (t)	Cathryn Dowd	828-412-1521	RESL	Melonie Sellers	601-508-8997
PIO2 (t)	Ray Butler	865-250-8980	RESL (t)	Laila Lienesch	541-760-1484
PIO2 (t)	Emily Cleaver	270-350-8103	SCKN (t)	Jocelyn Howell	214-934-0138
PIO2 (t)	Jason Lawor	850-510-4095	SITL	Paula Hensley	606-275-2140
SOF2 (t)	Rachel Gonzales	970-566-3880	ITSS	Christopher Evans	928-273-4203
SOF2	Paul Churchill	843-259-9884	ITSS	James Ehrlich	423-779-4731
SOF2	Richard Kelley	850-447-1344	ITSS	Rusty Brown	478-973-6231
SOF2 (t)	Larry Holsomback	706-280-4716	ITSS (t)	Kevin Curry	732-684-2999
	Jeffrey Henderson	479-518-3162	IMET	Jeremy Albright	931-267-2081
			FBAN	Cory Mottice	330-703-7545
OPERATIONS			DEMOB	Kelly Cagle	336-302-0343
OSC2	Jeff Schardt	706-280-5498	TNSP	Jeff DeMatteis	601-415-9080
OSC2	Tyler Van Ormer	540-236-8478	READ	Al Hoke	678-232-7107
OSC2	Shawn Nagle	662-231-4024		Justina Dumont	315-380-4196
OSC2	Loy Elam	336-467-7254	LOGISTICS		
OSC2	Josh Graham	501-545-3088	LSC2	James Copple	620-899-1135
OSC2	Bert Plante	732-904-5935	LSC2	James Aldridge	919-636-2471
OSC2 (t)	Kevin Grodi	321-408-2728	SUPL	Lemuel Cooksey	850-508-9097
DIVS	Greg Salansky	865-414-6461	COML	George Rosenthal	936-707-1832
DIVS	Steve Gray	770-655-8002	COML (t)	Shannon Herring	470-201-9582
DIVS	Matthew Johnson	870-415-0185	ODRM - American	Sherri Kite	850-209-2150
DIVS	Danny Gore	478-456-8516	ORDIM - Divide	Leigh Ostin	352-445-1366
DIVS (t)	Matthew Moe	928-220-0043	GSUL	Todd Waller	501-337-6308
	Gabriel Templeton	240-608-5899	EQPM (t)	Chad Wiley	936-546-1943
AIR OPERATIONS			EQPM (t)	Brian Truss	936-546-4338
AOBD	Tim Elder	863-243-1438	MEDL	Tim Exline	727-243-4144
ATGS	Steve Little	828-778-2077	MEDL (t)	Sherri McDougal	208-803-2026
HEBM	John Nobles	239-777-8455	FDUL	Shannon Williams	850-838-6715
HEBM (t)	Joshua Bardwell	936-546-1915	RCDM	Donnie Norvell	254-242-8692
			SECM	Sasha Herrin	239-300-5755
FINANCE			SECM	Greg Blanks	912-210-3976
			SECM	Sean Waggoner	202-527-2639

MEDICAL PLAN (ICS 206 WF)

Controlled Unclassified Information//Basic

Medical Incident Report

FOR A NON-EMERGENCY INCIDENT, WORK THROUGH CHAIN OF COMMAND TO REPORT AND TRANSPORT INJURED PERSONNEL AS NECESSARY.

FOR A MEDICAL EMERGENCY: IDENTIFY ON SCENE INCIDENT COMMANDER BY NAME AND POSITION AND ANNOUNCE **"MEDICAL EMERGENCY"** TO INITIATE RESPONSE FROM IMT COMMUNICATIONS/DISPATCH.

Use the following items to communicate situation to communications/dispatch.

1. CONTACT COMMUNICATIONS / DISPATCH (Verify correct frequency prior to starting report)

Ex: "Communications, Div. Alpha. Stand-by for Emergency Traffic."

2. INCIDENT STATUS: Provide incident summary (including number of patients) and command structure.

Ex: "Communications, I have a Red priority patient, unconscious, struck by a falling tree. Requesting air ambulance to Forest Road 1 at (Lat./Long.) This will be the Trout Meadow Medical, IC is TFLD Jones. EMT Smith is providing medical care."

Severity of Emergency / Transport Priority	<input type="checkbox"/> RED / PRIORITY 1 Life or limb threatening injury or illness. Evacuation need is IMMEDIATE <i>Ex: Unconscious, difficulty breathing, bleeding severely, 2° – 3° burns more than 4 palm sizes, heat stroke, disoriented.</i> <input type="checkbox"/> YELLOW / PRIORITY 2 Serious Injury or illness. Evacuation may be DELAYED if necessary. <i>Ex: Significant trauma, unable to walk, 2° – 3° burns not more than 1-3 palm sizes.</i> <input type="checkbox"/> GREEN / PRIORITY 3 Minor Injury or illness. Non-Emergency transport <i>Ex: Sprains, strains, minor heat-related illness.</i>	
Nature of Injury or Illness & Mechanism of Injury		<i>Brief Summary of Injury or Illness (Ex: Unconscious, Struck by Falling Tree)</i>
Transport Request		<i>Air Ambulance / Short Haul/Hoist Ground Ambulance / Other</i>
Patient Location		<i>Descriptive Location & Lat. / Long. (WGS84)</i>
Incident Name		<i>Geographic Name + "Medical" (Ex: Trout Meadow Medical)</i>
On-Scene Incident Commander		<i>Name of on-scene IC of Incident within an Incident (Ex: TFLD Jones)</i>
Patient Care		<i>Name of Care Provider (Ex: EMT Smith)</i>

3. INITIAL PATIENT ASSESSMENT: Complete this section for each patient as applicable (start with the most severe patient)

Patient Assessment: See IRPG page 106

Treatment:

4. TRANSPORT PLAN:

Evacuation Location (if different): (Descriptive Location (drop point, intersection, etc.) or Lat. / Long.) Patient's ETA to Evacuation Location:

Helispot / Extraction Site Size and Hazards:

5. ADDITIONAL RESOURCES / EQUIPMENT NEEDS:

Example: Paramedic/EMT, Crews, Immobilization Devices, AED, Oxygen, Trauma Bag, IV/Fluid(s), Splints, Rope rescue, Wheeled litter, HAZMAT, Extrication

6. COMMUNICATIONS: Identify State Air/Ground EMS Frequencies and Hospital Contacts as applicable

Function	Channel Name/Number	Receive (RX)	Tone/NAC *	Transmit (TX)	Tone/NAC *
COMMAND					
AIR-TO-GRND					
TACTICAL					

7. CONTINGENCY: Considerations: If primary options fail, what actions can be implemented in conjunction with primary evacuation method? Be thinking ahead.

8. ADDITIONAL INFORMATION: Updates/Changes, etc.

REMEMBER: Confirm ETA's of resources ordered. Act according to your level of training. Be Alert. Keep Calm. Think Clearly. Act Decisively.