

Incident Action Plan

Day Operational Period
Thursday 7/29/2021 0600-2100

Night Operational Period
Thursday 07/29/2021 1800 – Friday 07/30/2021 1000

American Fork
MT-HLF-005087 PIN57E (O115)

Divide Complex
MT-HLF-005079 PIN5FU (O115)

Morning Ops Briefing (0700) Zoom link: Zoom ID: 160 317 4872
Dial in # 1-551-285-1373



Check-in



American Fork Maps



Divide Complex Maps

2021.divide.finance@firenet.gov
2021.americanfork.finance@firenet.gov



1. INCIDENT NAME American Fork Fire and Divide Complex	2. OPERATIONAL PERIOD: DAY / NIGHT 07/29/2021 Thursday 0600 - 07/30/2021 Friday 1000	2. DATE PREPARED 07/28/2021	3. TIME PREPARED 1900
--	---	---------------------------------------	---------------------------------

3. GENERAL CONTROL OBJECTIVES FOR THE INCIDENT (INCLUDE ALTERNATIVES)

Management Objectives

- 1) Protection of human life and safety is the first priority for all actions taken on a wildfire and can overrule all other strategic/management objectives and incident requirements.
- 2) Base management decisions on meeting objectives while also minimizing the risk of COVID-19 exposures to responders and the public. COVID-19 considerations may alter how you meet goals but should not lead to higher risk tactics.
- 3) Maintain and strengthen relationships with the Helena-Lewis and Clark NF, Custer-Gallatin NF, private landowners, the public, cooperators and partners by providing timely and accurate information.
- 4) Use management actions that ensure fire personnel safety from contact with bears through compliance with the Food Storage Special Order.
- 5) Protect the unique attributes of impacted watersheds through actions that minimize sedimentation and invasive species movement.
- 6) Protect impact to cultural resources through consultation with local forest specialists.

Control Objectives

Divide Complex

- 1) Protection of human life and safety is the first priority for all actions taken and shall override all other incident control objectives. Evaluate risk vs. benefit in strategic and tactical planning and only commit operational resources to actions that have the highest probability of success.
- 2) Protect Tenderfoot Experimental Forest infrastructure within the tenderfoot drainage.
- 3) Protect the communities of Belt Park, Deer Creek Estates, Monarch, Neihart and the Hwy 89 corridor to avoid loss or damage to private lands and critical infrastructure.
- 4) Use mechanized equipment to establish and improve control lines where approved to minimize risk and exposure to firefighting resources.
- 5) Provide initial attack resources to respond to any new ignitions within the TFR area to limit potential size and growth.

American Fork Fire

- 1) Protection of human life and safety is the first priority for all actions taken and shall override all other incident control objectives. Evaluate risk vs. benefit in strategic and tactical planning and only commit operational resources to actions that have the highest probability of success.
- 2) Keep fire on Forest Service lands to protect and limit impact to adjacent landowner property and values at risk.
- 3) Provide initial attack resources to respond to any new ignitions within the TFR area to limit potential size and growth.

4. Operational Period Command Emphasis:

***** L C E S *****

5. General Situational Awareness: *Erratic and gusty winds to 45 mph possible with any shower or storm. Keep in mind gusty winds are possible far away from the nearest precipitation.*****

An isolated shower this morning will give way to a partly cloudy sky this afternoon. Highs will generally be in the 70s with min RHs dropping to around 33%. Another isolated shower or storm may develop this evening into the early overnight hours with very little in the way of rainfall. **The primary threats will be erratic and gusty winds to 45 and a couple lightning strikes.** Winds during the afternoon will generally be terrain driven with predominantly upslope/upvalley flow, however, exposed locations will see more of a WNW wind. Improved RH recoveries (50-60%) are expected tonight with light downslope/downvalley winds.

7. GENERAL MESSAGE

See the attached Safety Message for more information.

- | | | |
|---|--|---|
| <input checked="" type="checkbox"/> ORGANIZATION LIST (ICS 203) | <input checked="" type="checkbox"/> MEDICAL PLAN (ICS 206) | <input checked="" type="checkbox"/> WEATHER SPOT FORECAST |
| <input checked="" type="checkbox"/> ASSIGNMENT LIST (ICS 204) | <input checked="" type="checkbox"/> AIR OPS. SUMMARY (ICS 220) | <input checked="" type="checkbox"/> FIRE BEHAVIOR FORECAST |
| <input checked="" type="checkbox"/> COMMUNICATION PLAN (I) | <input checked="" type="checkbox"/> SAFETY MESSAGE | <input checked="" type="checkbox"/> INCIDENT EMERGENCY PLAN |

ICS 202

9. PREPARED BY (PLANNING SECTION CHIEF)
Carol O'Bryan *Carol O'Bryan PSC2*

10. APPROVED BY (INCIDENT COMMANDER)
Deborah Beard *Deborah Beard*

ORGANIZATION ASSIGNMENT LIST (ICS 203)

1. Incident Name:		2. Operational Period: DAY-NIGHT	
AMERICAN FORK FIRE AND DIVIDE COMPLEX		Date/Time From: 07/29/2021 0600	Date/Time To: 07/30/2021 1000
		THU	FRI
3. Incident Commander(s) and Command Staff:			
IC/UC	DEBORAH BEARD; MICHAEL CHEEK(T)	EQUIPMENT MANAGER	CHAD WILEY (T); BRIAN TRUSS (T)
DEPUTY	MARTY BENTLEY	ORDERING UNIT	SHERRI KITE (AMERICAN FORK) LEIGH OSTIN (DIVIDE COMPLEX)
LIAISON OFFICER	MIKE WRIGHT; BOBBY CLAYBROOK (T) JEFF GARDNER (T); BRADLEY COOPER (T)	RECEIVING & DISTRIBUTION UNIT	DONNIE NORVELL; IAN JOHNSON (DIVIDE COMPLEX) JOSH CLARK (AMERICAN FORK)
SAFETY OFFICER	BUDDY KELLEY; PAUL CHURCHILL; LARRY HOLSOMBACK; JEFF HENDERSON (T)	COMMUNICATIONS UNIT	GEORGE ROSENTHAL SHANNON HERRING (T)
INFORMATION OFFICER	MICHELLE BURNETT (V); ANDY GRAY; BROOK SMITH (T); TRISH BOLES (T); CATHY DOWD (T)(V), EMILY CLEAVER (T)(V); RAY BUTLER (T); NATHAN WATERS (T)	MEDICAL UNIT	TIM EXLINE SHERRI MCDUGAL (T)
		SECURITY UNIT	GREG BLANKS; SASHA HERRIN; SEAN WAGGONER
4. Agency/Organization Representative(s):			
Agency/Organization	Name		
USFS	CAROL HATFIELD; ALEX SIENKIEWICZ		
DNRC	JOCEE HEDRICK; HEIDI CRUM		
5. Planning Section:			
CHIEF	CAROL O'BRYAN; THOMAS BARRETT; JESSICA HOLLINGSWORTH (V) KELLY RUSSELL (T)		
RESOURCES UNIT	MELONIE SELLERS; LAILA LIENESCH JOCELYN HOWELL (T)		
SITUATION UNIT	CHRIS SHARPTON (T)		
FIRE BEHAVIOR ANALYST	KELLY CAGLE		
INCIDENT METEOROLOGIST	CORY MOTTICE IAN MORRISON		
GIS SPECIALIST	ETHAN ROBERTSON; CHRISTIAN VOSE (V); KATHERINE WHITE(V) KEYLONDA ARMWOOD(V); CLELL BRITT (T)		
TECHNOLOGY SUPPORT SPECIALIST	JAMES EHRlich; RUSTY BROWN; KEVIN CURRY (V);		
DEMOBILIZATION UNIT	JEFF DEMATTEIS		
STATUS CHECK-IN	PAULA HENSLEY (T)		
TRAINING SPECIALIST	AL HOKE (V)		
6. Logistics Section:			
CHIEF	JAMIE COPPLE; DAVID MCVAY		
DEPUTY	JIM ALDRIDGE		
SUPPLY UNIT	LEMUEL COOKSEY		
FOOD UNIT	SHANNON WILLIAMS		
GROUND SUPPORT UNIT	TODD WALLER		
7. Operations Section:			
		LEAD OPS SECTION CHIEF	JEFF SCHARDT
		PLANNING OPS SECTION CHIEF	SHAWN NAGLE; KEVIN GRODI (T)
		FIELD OPS SECTION CHIEF	TYLER VAN ORMER BERT PLANTE (T)
		Branch	I AMERICAN FORK
		BRANCH DIRECTOR	BRIAN ELAM
		DIVISION/GROUP	A ABE PHILIPSON
		DIVISION/GROUP	M STEVE GRAY CURTIS LITTLEFIELD (T)
		DIVISION/GROUP	P SHAWN DUGGAR JASON MARTIN (T)
		Branch	II DIVIDE COMPLEX - ELLIS
		DIVISION/GROUP	E/Q BRIAN DELASANTOS (T)
		Branch	III DIVIDE COMPLEX - BALSINGER
		BRANCH DIRECTOR	JOSH GRAHAM
		DIVISION/GROUP	I GREG SALANSKY MATT MOE (T)
		DIVISION/GROUP	T DANNY GORE MATT KLINDT (T)
		DIVISION/GROUP	U BRIAN KEATING GABRIEL TEMPLETON (T)
		DIVISION/GROUP	STRUCTURE TK KENNEDY
		DIVISION/GROUP	IA TFLD MIKE WILLARDSON
		DIVISION/GROUP	NIGHT TFLD DARIN GROFF
7b. Air Operations Branch:			
		AIR OPS BRANCH DIRECTOR	TIM ELDER
		AIR TACTICAL GROUP SUPERVISOR	STEVE LITTLE
9. Prepared By:			
Name:	CAROL O'BRYAN	Position/Title:	PSC2
Signature:			
ICS 203	IAP Page	Date/Time:	07/27/2021 2143

ORGANIZATION ASSIGNMENT LIST (ICS 203)

1. Incident Name:		2. Operational Period: DAY-NIGHT	
AMERICAN FORK FIRE AND DIVIDE COMPLEX		Date/Time From: 07/29/2021 0600 THU	Date/Time To: 07/30/2021 1000 FRI
HELIBASE MANAGER	JOHN NOBLES; JOSH BARDWELL (T)		
AIR SUPPORT GROUP SUPERVISOR	BRIAN BUTLER (T)		
8. Finance/Administration Section:			
CHIEF	REGGIE LANIER JASON GILLIS (T)		
TIME UNIT	LAURA WILSON; DONNA BENTLEY (V); TAYLOR JONES		
COMPENSATION UNIT	TERRI MCDONALD (V)		
COST UNIT	MARLENE HUDSON		
EQUIPMENT	TWANISHA BENNETT		
9. Prepared By:	Name: CAROL O'BRYAN	Position/Title: PSC2	Signature:
ICS 203	IAP Page	Date/Time: 07/27/2021 2143	<i>Carol O'Bryan PSC2</i>



← Submit Wx Obs!

INCIDENT Weather Forecast

View Local Obs →



FORECAST NO: 7
PREDICTION FOR: Thursday
SHIFT DATE: July 29, 2021
FORECAST ISSUED: 1800 July 28, 2021

NAME OF FIRE: American Fork/Divide Complex
UNIT: Helena/Lewis & Clark NF and Custer Gallatin NF
SIGNED: Cory Mottice
Incident Meteorologist

****Erratic and gusty winds to 45 mph possible with any shower or storm. Keep in mind gusty winds are possible far away from the nearest precipitation.****

WEATHER DISCUSSION: An isolated shower this morning will give way to a partly cloudy sky this afternoon. Highs will generally be in the 70s with min RHs dropping to around 33%. Another isolated shower or storm may develop this evening into the early overnight hours with very little in the way of rainfall. The primary threats will be erratic and gusty winds to 45 and a couple lightning strikes. Winds during the afternoon will generally be terrain driven with predominantly upslope/upvalley flow, however, exposed locations will see more of a WNW wind. Improved RH recoveries (50-60%) are expected tonight with light downslope/downvalley winds.

WEATHER FORECAST FOR THE DIVIDE COMPLEX & AMERICAN FORK:

WEATHER: Seasonable temperatures with a chance of an evening shower/storm. Generally less than 0.05" of rainfall is expected. *Erratic wind gusts to 45 mph possible with any shower/storm.*

TEMPERATURES: 70-74 ridges and 74-78 valley bottoms

HUMIDITY: Minimums 33 to 36%

20 FT WINDS:

RIDGETOP - WNW 10 to 15 mph for completely exposed locations. Otherwise, variable wind.

SLOPE/VALLEY - Upslope/upvalley at 8 to 12 mph.

HAINES INDEX: 3 (Very low chance of plume dominated activity)

CHANCE OF WETTING RAIN (> .10): 10%

STABILITY/INVERSION: Weak inversion breaking by 0900.

OUTLOOK FOR TONIGHT:

A slight chance of a shower with gusty winds before 2200. RH recoveries will reach 50-60%. Partly cloudy skies early will become mostly clear by Friday morning. Temperatures will fall to the mid and upper 50s for most areas and the low 50s for the valley locations. Downslope/downvalley winds 4-8 mph.

OUTLOOK FOR FRIDAY AND SATURDAY:

Temperatures will be in the 70s again on Friday and Saturday with slightly drier air moving into the region. Expect mostly sunny to partly cloudy skies each day with min RHs in the upper 20s. Most areas will remain dry these days, but a stray afternoon shower or storm cannot be completely ruled out. If a shower or storm develops, gusty winds and lightning would be the primary threats. Winds become N to NE on Friday before moving around to the E or ESE on Saturday. Winds Saturday will be stronger with gusts of 20 to 30 mph expected in exposed areas. Expect low temperatures in the 50s each night.

FIRE BEHAVIOR FORECAST

FORECAST NUMBER: # 7	TYPE OF FIRE: Wildland
FIRE NAME: American Fork/ Divide Complex	OPERATIONAL PERIOD: 07/29/2021 Day/Night Shift
DATE ISSUED: 07/28/2021	TIME ISSUED: 2000
UNIT: Helena / Lewis and Clark NF and Custer /Gallatin NF	WRITTEN: Kelly Cagle FBAN

FUEL ASSUMPTIONS: The major fuel types found on the American Fork/Divide Complex are Fuel Model 10 (mixed conifer with heavy dead/down) and Fuel Model 2 (short grass w/timber) in the lower elevations. **Current fuel conditions are favorable for extreme fire behavior within all fuel types**, especially 100 hour and 1000 hour fuels. Live fuel moistures are low and will contribute to fire spread. Grass fuels are becoming more available as well. Heavy dead and down will likely be the most problematic. ERC's are approaching all time high's for today's date.

WEATHER SUMMARY: Reference fire weather forecast for specifics.
 Discussion – An isolated shower is possible this morning. Partly cloudy skies in the afternoon. Temps will be in the upper 70's with RH's in the low 30's. Winds will be predominantly upslope and up valley this afternoon. Chance of a shower or T storm in the early evening with potential for gusts or erratic winds near storms.

General Fire Behavior Forecast: *General movement will be upslope/downslope today.* Current fuel conditions encourage extreme fire behavior. Fuel driven fire with uphill runs and torching or crowning should be expected. Long distance spotting is probable anywhere wind and slope align. **Expect a high resistance to control.** Expect activity to begin early in the day and to persist thru early evening and into the night hours.

Specific:

American Fork Fire - Westward push into Shields River drainage will continue today. Expect fire behavior to be intense and progression to continue unabated until fire reaches rocks/grass. Meadows and fuels treatment should blunt fire progression on the west side of Shield River drainage. Blacktail fire scar should continue to limit spread to the north.

Balsinger Fire – Expect fire to continue to progress unabated to the north and west until it runs out of fuel. Fire behavior could be intense, with group torching, crown runs, and long range spotting likely. It will be difficult to suppress fire in conifer fuel under the extremely dry conditions.

Ellis Fire – Smoldering and isolated single tree torching will most likely continue. Any heat source in direct contact with unburned fuel could produce intense fire behavior.

Night Shift – Expect fire to remain active well into the overnight hours – possibly midnight or later. Unexpectedly intense fire behavior is possible. Forward movement of fire with torching or short canopy runs cannot be ruled out.

Fine fuel moisture today is -	3 to 4%	1000 hour fuels 9 to 12%
Probability of Ignition today -	85% +	Live fuel moistures are critically low
Max Spotting Distance Today-	1/2 mile plus	Haines is at 3 for today

AIR OPERATIONS: Smoke limited operations somewhat yesterday and potentially will today.

FIRE BEHAVIOR SAFETY: Fire may threaten structures today. You may find yourself engaged in operations in a WUI area. Have a solid plan – and review WUI safety in IRPG.

Division/Group Assignment List (ICS 204 WF)
Controlled Unclassified Information//Basic

1. Incident Name:		3.	
AMERICAN FORK		Branch: I	Division/Group A
2. Operational Period: DAY / NIGHT			
Date/Time From: 07/29/2021 0600	THU	Date/Time To: 07/30/2021 2100	FRI

4. Operations Personnel			
BRANCH DIRECTOR	BRIAN ELAM	FIELD OPERATIONS CHIEF	TYLER VAN ORMER BERT PLANTE (T)
LEAD OPERATIONS CHIEF	JEFF SCHARDT	PLANNING OPERATIONS CHIEF	SHAWN NAGLE KEVIN GRODI (T)
DIVISION/GROUP SUPERVISOR	ABE PHILIPSON		

5. Resources Assigned this Period					
Strike Team / Task Force / Resource Designator	LWD	Leader	Number Persons	Drop Off PT./Time	Pick Up PT./Time
O-9 TFLD	08/04	DANNY LOWELL	1	AMERICAN FORK SPIKE/0600	AMERICAN FORK SPIKE/2100
O-53 TFLD	07/30	ROCK BYRD	1	AMERICAN FORK SPIKE/0600	AMERICAN FORK SPIKE/2100
C-5 HC2 OREGON WOODS	08/03	ALEX TOMCHAK	20	AMERICAN FORK SPIKE/0600	AMERICAN FORK SPIKE/2100
C-8 HC2 BLUE MOUNTAIN	07/31	JESUS RAMOS	20	AMERICAN FORK SPIKE/0600	AMERICAN FORK SPIKE/2100
E-11 T3 ENG CASTLE MOUNTAIN	08/03	JOSEPH MEYER	3	AMERICAN FORK SPIKE/0600	AMERICAN FORK SPIKE/2100
E-9 T6 ENG TEXAS FIRE	08/05	CARLOS MAGANA	2	AMERICAN FORK SPIKE/0600	AMERICAN FORK SPIKE/2100
E-10 T6 ENG CEDAR MOUNTAIN	08/03	MANSON W/EMT	4	AMERICAN FORK SPIKE/0600	AMERICAN FORK SPIKE/2100
E-19 T6 ENG SOLOMON FIRE	08/07	TADLAM MERE	3	AMERICAN FORK SPIKE/0600	AMERICAN FORK SPIKE/2100
E-14 DOZ2 CONIFER LOGGING	07/28	JUSTIN MCDONOUGH	1	AMERICAN FORK SPIKE/0600	AMERICAN FORK SPIKE/2100
E-23 T6 ENG E621	07/29	MATT BIRCKSHIRE	5	AMERICAN FORK SPIKE/0600	AMERICAN FORK SPIKE/2100
E-3 T3 DOZ MEADOW CREEK	08/12	SHAWN HEYER	2	AMERICAN FORK SPIKE/0600	AMERICAN FORK SPIKE/2100
E-30 WAT2 CASTLE MOUNTAIN	08/06	BRENDAN ZELANKA	1	AMERICAN FORK SPIKE/0600	AMERICAN FORK SPIKE/2100
E-33 AMBU FRONT LINE EMS	08/10	LARRY ROSENBERG	1	AMERICAN FORK SPIKE /0600	AMERICAN FORK SPIKE/2100
O-3.51 SOF2 (T)	08/04	JEFF HENDERSON	1	AMERICAN FORK SPIKE/0600	AMERICAN FORK SPIKE/2100
READ		RANDY SCARLETT	1	AMERICAN FORK SPIKE/0600	AMERICAN FORK SPIKE/2100
ARCH		DOUG KOSIK	1	AMERICAN FORK SPIKE/0600	AMERICAN FORK SPIKE/2100

6. Control Operations/Work Assignments:

Task: Continue to construct hand line off of established dozer line from DIV A/M break west toward Fawn Creek. Scout and identify potential contingency line location options to the south from Blackberry Creek west toward Sweet Grass Creek ridge.

8. Division/Group Communication Summary						
Function	Channel	RX Frequency N/W	RX Tone/NAC	TX Frequency N/W	TX Tone/NAC	Mode
COMMAND	1	169.7500	107.2	167.1000	107.2	A
TACTICAL	6	166.9875		166.9875	114.8	A

9. Prepared By (Resource Unit Leader)	Approved By (Planning Section Chief)	Date	Time
JOCELYN HOWELL RESL(T)	CAROL O'BRYAN	07/28/2021	1800

Division/Group Assignment List (ICS 204 WF)
Controlled Unclassified Information//Basic

1. Incident Name:		3.	
AMERICAN FORK		Branch: I	Division/Group A
2. Operational Period: DAY / NIGHT			
Date/Time From: 07/29/2021 0600	THU	Date/Time To: 07/30/2021 2100	FRI

4. Operations Personnel			
BRANCH DIRECTOR	BRIAN ELAM	FIELD OPERATIONS CHIEF	TYLER VAN ORMER BERT PLANTE (T)
LEAD OPERATIONS CHIEF	JEFF SCHARDT	PLANNING OPERATIONS CHIEF	SHAWN NAGLE KEVIN GRODI (T)
DIVISION/GROUP SUPERVISOR	ABE PHILIPSON		

6. Control Operations/Work Assignments:

Purpose:To improve containment along the fires southern edge and begin construction of a contingency line to the south of the main fire.
End State:Keep fire north of the contingency line to prevent fire from crossing the National Forest boundary.

7. Special Instructions:

Coordinate with READ before heavy equipment use: there is potential for sensitive resources in this area
 Please coordinate with READ if sensitive/archeological resources are located
 Please provide a picture of the artifact/site and a GPS location if found
 Do not post photos with Archeological resources that have location information

****IN THE EVENT OF AN IWI:**

CONTACT DIVIDE COMMUNICATIONS ON COMMAND
 IF UNREACHABLE, CONTACT BY PHONE AT **208-401-6806**

8. Division/Group Communication Summary

Function	Channel	RX Frequency N/W	RX Tone/NAC	TX Frequency N/W	TX Tone/NAC	Mode
COMMAND	1	169.7500	107.2	167.1000	107.2	A
TACTICAL	6	166.9875		166.9875	114.8	A

9. Prepared By (Resource Unit Leader)	Approved By (Planning Section Chief)	Date	Time
JOCELYN HOWELL RESL(T)	CAROL O'BRYAN	07/28/2021	1800

Division/Group Assignment List (ICS 204 WF)

Controlled Unclassified Information//Basic

1. Incident Name:				3.		
AMERICAN FORK				I	M	
2. Operational Period: DAY / NIGHT						
Date/Time From: 07/29/2021 0600 THU		Date/Time To: 07/30/2021 2100 FRI				
4. Operations Personnel						
BRANCH DIRECTOR BRIAN ELAM		FIELD OPERATIONS CHIEF TYLER VAN ORMER BERT PLANTE (T)				
LEAD OPERATIONS CHIEF JEFF SCHARDT		PLANNING OPERATIONS CHIEF SHAWN NAGLE KEVIN GRODI (T)				
DIVISION/GROUP SUPERVISOR STEVE GRAY CURTIS LITTLEFIELD (T)						
5. Resources Assigned this Period						
Strike Team / Task Force / Resource Designator		LWD	Leader	Number Persons	Drop Off PT./Time	Pick Up PT./Time
O-77 TFLD		07/30	TODD MARKHAM	1	AMERICAN FORK SPIKE/0600	AMERICAN FORK SPIKE/2100
E-2 T3 ENG ROCKY MOUNTAIN		08/01	SEAN RIPHENBURG	3	AMERICAN FORK SPIKE/0600	AMERICAN FORK SPIKE/2100
E-38 T4 ENG LOOMIS		08/03	TAYLOR EASLEY W/EMT	3	AMERICAN FORK SPIKE/0600	AMERICAN FORK SPIKE/2100
E-44 T4 ENG GIST		07/30	JOE HESTER LOGGING	3	AMERICAN FORK SPIKE/0600	AMERICAN FORK SPIKE/2100
E-7 T6 ENG WHITEGRASS		08/03	WHITEGRASS	3	AMERICAN FORK SPIKE/0600	AMERICAN FORK SPIKE/2100
E-8 T6 ENG STAX FACTOR		08/05	JOHN HOELLERICK	3	AMERICAN FORK SPIKE/0600	AMERICAN FORK SPIKE/2100
E-12 T6 ENG FUNK FIRE		08/05	GREG FUNK	3	AMERICAN FORK SPIKE/0600	AMERICAN FORK SPIKE/2100
E-13 T6 ENG BISHOP		08/06	EDGAR JOHNSON	3	AMERICAN FORK SPIKE/0600	AMERICAN FORK SPIKE/2100
E-14 T6 ENG BISHOP		08/06	ANNA WILDGUN	3	AMERICAN FORK SPIKE/0600	AMERICAN FORK SPIKE/2100
E-31 T6 ENG GIST		07/29	DON WOOD	3	AMERICAN FORK SPIKE/0600	AMERICAN FORK SPIKE/2100
E-22 T6 ENG FLAT ROCK		08/10	CODY BLAIR	3	AMERICAN FORK SPIKE/0600	AMERICAN FORK SPIKE/2100
E-1 T6 ENG R.CONSTRUCTION		08/01	RICHARD DERUCHE	3	AMERICAN FORK SPIKE/0600	AMERICAN FORK SPIKE/2100
O-3.51 SOF2 (T)		08/04	JEFF HENDERSON	1	AMERICAN FORK SPIKE/0600	AMERICAN FORK SPIKE/2100
6. Control Operations/Work Assignments:						
<p>Task: Hold previous firing operations on east line</p> <p>Purpose: Ensure fire does not progress onto private property</p> <p>End State: Fire will be kept from progressing onto private property</p>						
7. Special Instructions:						
<p>Coordinate with READ before heavy equipment use: there is potential for sensitive resources in this area</p> <p>Please coordinate with READ if sensitive/archeological resources are located</p> <p>Please provide a picture of the artifact/site and a GPS location if found</p> <p>Do not post photos with Archeological resources that have location information</p>						
8. Division/Group Communication Summary						
Function	Channel	RX Frequency N/W	RX Tone/NAC	TX Frequency N/W	TX Tone/NAC	Mode
COMMAND	1	169.7500	107.2	167.1000	107.2	A
TACTICAL	4	168.6125		168.6125	156.7	A
9. Prepared By (Resource Unit Leader)			Approved By (Planning Section Chief)		Date	Time
JOCELYN HOWELL RESL(T)			CAROL O'BRYAN		07/28/2021	1800

Division/Group Assignment List (ICS 204 WF)

Controlled Unclassified Information//Basic

1. Incident Name:		3.	
AMERICAN FORK		Branch:	Division/Group
2. Operational Period: DAY / NIGHT		I	M
Date/Time From: 07/29/2021 0600	THU	Date/Time To: 07/30/2021 2100	FRI
4. Operations Personnel			
BRANCH DIRECTOR	BRIAN ELAM	FIELD OPERATIONS CHIEF	TYLER VAN ORMER BERT PLANTE (T)
LEAD OPERATIONS CHIEF	JEFF SCHARDT	PLANNING OPERATIONS CHIEF	SHAWN NAGLE KEVIN GRODI (T)
DIVISION/GROUP SUPERVISOR	STEVE GRAY CURTIS LITTLEFIELD (T)		

7. Special Instructions:

****IN THE EVENT OF AN IWI:**
CONTACT DIVIDE COMMUNICATIONS ON COMMAND
IF UNREACHABLE, CONTACT BY PHONE AT 208-401-6806

8. Division/Group Communication Summary						
Function	Channel	RX Frequency N/W	RX Tone/NAC	TX Frequency N/W	TX Tone/NAC	Mode
COMMAND	1	169.7500	107.2	167.1000	107.2	A
TACTICAL	4	168.6125		168.6125	156.7	A
9. Prepared By (Resource Unit Leader)		Approved By (Planning Section Chief)		Date	Time	
JOCELYN HOWELL RESL(T)		CAROL O'BRYAN		07/28/2021	1800	

Division/Group Assignment List (ICS 204 WF)
Controlled Unclassified Information//Basic

1. Incident Name:				3.		
AMERICAN FORK				Branch:		Division/Group
2. Operational Period: DAY / NIGHT				I		P
Date/Time From: 07/29/2021 0600 THU		Date/Time To: 07/30/2021 2100 FRI				
4. Operations Personnel						
BRANCH DIRECTOR		BRIAN ELAM		FIELD OPERATIONS CHIEF		TYLER VAN ORMER BERT PLANTE (T)
LEAD OPERATIONS CHIEF		JEFF SCHARDT		PLANNING OPERATIONS CHIEF		SHAWN NAGLE KEVIN GRODI (T)
DIVISION/GROUP SUPERVISOR		SHAWN DUGGAR JASON MARTIN (T)				
5. Resources Assigned this Period						
Strike Team / Task Force / Resource Designator		LWD	Leader	Number Persons	Drop Off PT./Time	Pick Up PT./Time
C-19 HC2I BEAR JAW				20	AMERICAN FORK SPIKE /0600	AMERICAN FORK SPIKE/2100
E-111 T6 ENG E691		08/11	MICHAEL WUPPER	3	AMERICAN FORK SPIKE/0600	AMERICAN FORK SPIKE/2100
E-114 T6 ENG E691		08/12	ZAC ALLEN	5	AMERICAN FORK SPIKE/0600	AMERICAN FORK SPIKE/2100
E-18 LOVELAND FD ENG		08/11	WILLARD	3	AMERICAN FORK SPIKE/0600	AMERICAN FORK SPIKE/2100
E-6 SHILOH (VIPR) 215		08/11			AMERICAN FORK SPIKE /0600	AMERICAN FORK SPIKE /2100
E-15 AURORA		08/11			AMERICAN FORK SPIKE /0600	AMERICAN FORK SPIKE /2100
E-17 GREELEY BRUSH 6		08/11	BRIAN BENTON	3	AMERICAN FORK SPIKE /0600	AMERICAN FORK SPIKE /2100
E-16 JOHNSON CO E-121		08/11			AMERICAN FORK SPIKE /0600	AMERICAN FORK SPIKE /2100
E-104 WT2 THOMPSON AND SONS INC.		08/12			AMERICAN FORK SPIKE/0600	AMERICAN FORK SPIKE/2100
E-60 EMTF		07/31	GABRIEL MIZRAHI	2	AMERICAN FORK SPIKE /0600	AMERICAN FORK SPIKE /2100
6. Control Operations/Work Assignments:						
Task: Continue with structure assessments and mitigation measures in the Shields River area.						
Purpose: Ensure any threats to structures are mitigated.						
End State: Threats to structures within the Shields River area will be mitigated						
7. Special Instructions:						
Coordinate with READ before heavy equipment use; there is potential for sensitive resources in this area Please coordinate with READ if sensitive/archeological resources are located Please provide a picture of the artifact/site and a GPS location if found Do not post photos with Archeological resources that have location information						
**IN THE EVENT OF AN IWI:						
CONTACT DIVIDE COMMUNICATIONS ON COMMAND						
IF UNREACHABLE CONTACT BY PHONE AT 208-401-6806						
8. Division/Group Communication Summary						
Function	Channel	RX Frequency N/W	RX Tone/NAC	TX Frequency N/W	TX Tone/NAC	Mode
COMMAND	1	169.7500	107.2	167.1000	107.2	A
TACTICAL	5	163.7125		163.7125	146.2	A
9. Prepared By (Resource Unit Leader)			Approved By (Planning Section Chief)		Date	Time
JOCELYN HOWELL RESL(T)			CAROL O'BRYAN		07/28/2021	1800

Division/Group Assignment List (ICS 204 WF)
Controlled Unclassified Information//Basic

1. Incident Name:		3.	
DIVIDE COMPLEX- ELLIS		Branch: II	Division/Group E/Q
2. Operational Period: DAY - NIGHT			
Date/Time From: 07/29/2021 0600 THU	Date/Time To: 07/30/2021 1000 FRI		

4. Operations Personnel			
BRANCH DIRECTOR		FIELD OPERATIONS CHIEF	TYLER VAN ORMER BERT PLANTE (T)
LEAD OPERATIONS CHIEF	JEFF SCHARDT	PLANNING OPERATIONS CHIEF	SHAWN NAGLE KEVIN GRODI (T)
TFLD	BRIAN DELASANTOS (T)		

5. Resources Assigned this Period					
Strike Team / Task Force / Resource Designator	LWD	Leader	Number Persons	Drop Off PT./Time	Pick Up PT./Time
O-71 TFLD	07/29	LUKE FOSNESS	1	DP10 /0900	SHOWDOWN SPIKE/2100
E-9 T6 ENG BISHOP	08/11	GRANT CLAYBORN	3	DP10/0900	SHOWDOWN SPIKE/2100
E-20 T6 ENG CORVALLIS	08/10	KEVIN DRAKE	3	DP10/0900	SHOWDOWN SPIKE/2100
E-32 T6 ENG CASTLE MOUNTAIN	08/05	CHASE CORK	3	DP 10/0900	SHOWDOWN SPIKE/2100
E-33 T6 ENG CASTLE MOUNTAIN	08/05	MCCARTHY NOSIE	3	DP10/0900	SHOWDOWN SPIKE/2100
E-35 T6 ENG PEANUT PIE	08/01	DALE GOODGUN	3	DP10/0900	SHOWDOWN SPIKE/2100
E-6 T2 WAT PARK COUNTY	07/31	ELIJAH NAZARI	1	DP10/0900	SHOWDOWN SPIKE/2100
E-34 FRONT LINE EMS NONTRANSPORT	08/11	CORBIN/FALLIS	2	DP10/0900	SHOWDOWN SPIKE/2100

6. Control Operations/Work Assignments:
TASK: Hold and improve containment lines. Implement rehabilitation and suppression repair tactics where necessary.
PURPOSE: Ensure previous actions complemented continue to mitigate any threats.
END STATE: Fire will be kept within containment lines

7. Special Instructions:
Spike camp is located at Showdown Ski Resort.
 Adhere to food storage order.
 Utilize dozers on FS land as directed by ARCH / READ
**** IN THE EVENT OF AN IWI:**
Contact DIVIDE COMMUNICATIONS ON COMMAND
If unreachable, contact by phone at 208-401-6806

8. Division/Group Communication Summary						
Function	Channel	RX Frequency N/W	RX Tone/NAC	TX Frequency N/W	TX Tone/NAC	Mode
COMMAND	6	173.8125	107.2	168.4750	107.2	A
COMMAND	7	173.0375	107.2	167.3250	107.2	A
COMMAND	8	169.8125	107.2	164.6750	107.2	A
TACTICAL	5	166.7750	107.2	166.7750	107.2	A
COMMAND	10	171.5000		164.0000	103.5	A
AIR TO GROUND	13	166.6125		166.6125		A

9. Prepared By (Resource Unit Leader)	Approved By (Planning Section Chief)	Date	Time
MELONIE SELLERS	CAROL O'BRYAN	07/28/2021	1800

Division/Group Assignment List (ICS 204 WF)
Controlled Unclassified Information//Basic

1. Incident Name:				3.		
DIVIDE COMPLEX - BALSINGER				III	I	
2. Operational Period: DAY - NIGHT						
Date/Time From: 07/29/2021 0600 THU		Date/Time To: 07/30/2021 1000 FRI				
4. Operations Personnel						
BRANCH DIRECTOR JOSH GRAHAM		FIELD OPERATIONS CHIEF TYLER VAN ORMER BERTE PLANTE (T)				
LEAD OPERATIONS CHIEF JEFF SCHARDT		PLANNING OPERATIONS CHIEF SHAWN NAGLE KEVIN GRODI (T)				
DIVISION/GROUP SUPERVISOR GREG SALANSKY MATT MOE (T)						
5. Resources Assigned this Period						
Strike Team / Task Force / Resource Designator		LWD	Leader	Number Persons	Drop Off PT./Time	Pick Up PT./Time
O-150 TFLD		08/09	RYAN HOPKINS	1	SHOWDOWN SPIKE/0600	SHOWDOWN SPIKE/2100
C-14 IHC MIDEWIN		08/09	JERRY HOFFMAN	20	SHOWDOWN SPIKE/0600	SHOWDOWN SPIKE/2100
E-37 HETF		07/31	MIKE WIRTH	4	SHOWDOWN SPIKE/0600	SHOWDOWN SPIKE/2100
E-43 T4 ENG BOSKET'S EXCAVATING		07/30	REX MILLER	3	SHOWDOWN SPIKE/0600	SHOWDOWN SPIKE/2100
E-13 T6 ENG PEANUT PIE		08/09	DAN WANOUS	3	SHOWDOWN SPIKE/0600	SHOWDOWN SPIKE/2100
E-21 T6 ENG HIGH DESERT		08/09	THOMAS HANKS	3	SHOWDOWN SPIKE/0600	SHOWDOWN SPIKE/2100
E-26 T6 ENG BROWN WILDLAND		08/13	NICK BROWN	3	SHOWDOWN SPIKE/0600	SHOWDOWN SPIKE/2100
E-26 T6 ENG WHITE HORSE		08/10	KEIR MURPHY	3	SHOWDOWN SPIKE/0600	SHOWDOWN SPIKE/2100
E-109 T6 ENG GIST		08/10	LEW WALLACE	3	SHOWDOWN SPIKE/0600	SHOWDOWN SPIKE/2100
E-3 T3 DOZ MEADOW CREEK		08/11	SHAWN HEYER	2	SHOWDOWN SPIKE/0600	SHOWDOWN SPIKE/2100
E-71 T2 SKD BULL CREEK FORESTRY		08/02	JAY NORTOME	1	SHOWDOWN SPIKE/0600	SHOWDOWN SPIKE/2100
E-22 T3 SKD AUSTIN LOGGING		07/30	JAMES AUSTIN	2	SHOWDOWN SPIKE/0600	SHOWDOWN SPIKE/2100
E-48 T1 FELB A & C CONSTRUCTION		08/04	JOHN ANDREWS	1	SHOWDOWN SPIKE/0600	SHOWDOWN SPIKE/2100
E-50 T1 FELB 24/7		08/01	TIM WERK	2	SHOWDOWN SPIKE/0600	SHOWDOWN SPIKE/2100
E-59 T1 FELB A & C CONSTRUCTION		08/03	SHAWN MARVIN	1	SHOWDOWN SPIKE/0600	SHOWDOWN SPIKE/2100
8. Division/Group Communication Summary						
Function	Channel	RX Frequency N/W	RX Tone/NAC	TX Frequency N/W	TX Tone/NAC	Mode
COMMAND	6	173.8125	107.2	168.4750	107.2	A
COMMAND	7	173.0375	107.2	167.3250	107.2	A
COMMAND	8	169.8125	107.2	164.6750	107.2	A
TACTICAL	1	168.0500	107.2	168.0500	107.2	A
COMMAND	9	171.5000	107.2	164.0000	156.7	A
AIR TO GROUND	13	166.6125		166.6125		A
9. Prepared By (Resource Unit Leader)			Approved By (Planning Section Chief)		Date	Time
LAILA LIENESCH, RESL			CAROL O'BRYAN, PSC2		07/28/2021	1800

Division/Group Assignment List (ICS 204 WF)

Controlled Unclassified Information//Basic

1. Incident Name:				3.		
DIVIDE COMPLEX - BALSINGER				Branch:		Division/Group
2. Operational Period: DAY - NIGHT				III		I
Date/Time From: 07/29/2021 0600 THU		Date/Time To: 07/30/2021 1000 FRI				
4. Operations Personnel						
BRANCH DIRECTOR JOSH GRAHAM		FIELD OPERATIONS CHIEF TYLER VAN ORMER BERTE PLANTE (T)				
LEAD OPERATIONS CHIEF JEFF SCHARDT		PLANNING OPERATIONS CHIEF SHAWN NAGLE KEVIN GRODI (T)				
DIVISION/GROUP SUPERVISOR GREG SALANSKY MATT MOE (T)						
5. Resources Assigned this Period						
Strike Team / Task Force / Resource Designator		LWD	Leader	Number Persons	Drop Off PT./Time	Pick Up PT./Time
E-57 T1 FELB J & E CONTRACTING		08/03	ED JUNGERS	1	SHOWDOWN SPIKE/0600	SHOWDOWN SPIKE/2100
E-72 T2 EXCA WIRTH		08/02	PHIL WIRTH	1	SHOWDOWN SPIKE/0600	SHOWDOWN SPIKE/2100
E-83 T2 EXCA WIRTH		08/02	WIRTH	1	SHOWDOWN SPIKE/0600	SHOWDOWN SPIKE/2100
E-88 T2 EXCA WIRTH		08/04	CODY WIRTH	2	SHOWDOWN SPIKE/0600	SHOWDOWN SPIKE/2100
E-65 LOG C & G LOGGING		08/03	COLTON GONDEIRO	1	SHOWDOWN SPIKE/0600	SHOWDOWN SPIKE/2100
E-81 T1 DUMP TRK2		08/03	MATT FULLER	2	SHOWDOWN SPIKE/0600	SHOWDOWN SPIKE/2100
E-73 T1 DUMP TRK		08/03	TANNER CLONINGER	1	SHOWDOWN SPIKE/0600	SHOWDOWN SPIKE/2100
O-3.65 SOF2		08/04	LARRY HOLSOMBACK	1	SHOWDOWN SPIKE/0600	SHOWDOWN SPIKE/2100
E-55 AMBU *** ROVING		07/31	KALILOCAY WILLIE	2	SHOWDOWN SPIKE/0600	SHOWDOWN SPIKE/2100
READ - LOCAL			JASON OLTROGGE	1	SHOWDOWN SPIKE/0600	SHOWDOWN SPIKE/2100
ARCH - LOCAL			JOSH UECKER	1	SHOWDOWN SPIKE/0600	SHOWDOWN SPIKE/2100
6. Control Operations/Work Assignments:						
TASK: Implement tactics to keep fire North of Divide Road.						
PURPOSE: Ensure fire activity does not get established South of Divide Road.						
END STATE: Fire activity will be kept North of Divide Road.						
7. Special Instructions:						
8. Division/Group Communication Summary						
Function	Channel	RX Frequency N/W	RX Tone/NAC	TX Frequency N/W	TX Tone/NAC	Mode
COMMAND	6	173.8125	107.2	168.4750	107.2	A
COMMAND	7	173.0375	107.2	167.3250	107.2	A
COMMAND	8	169.8125	107.2	164.6750	107.2	A
TACTICAL	1	168.0500	107.2	168.0500	107.2	A
COMMAND	9	171.5000	107.2	164.0000	156.7	A
AIR TO GROUND	13	166.6125		166.6125		A
9. Prepared By (Resource Unit Leader)			Approved By (Planning Section Chief)		Date	Time
LAILA LIENESCH, RESL			CAROL O'BRYAN, PSC2		07/28/2021	1800

Division/Group Assignment List (ICS 204 WF)
Controlled Unclassified Information//Basic

1. Incident Name:		3.		
DIVIDE COMPLEX - BALSINGER		Branch: III	Division/Group I	
2. Operational Period: DAY - NIGHT				
Date/Time From: 07/29/2021 0600	THU	Date/Time To: 07/30/2021 1000	FRI	
4. Operations Personnel				
BRANCH DIRECTOR	JOSH GRAHAM	FIELD OPERATIONS CHIEF	TYLER VAN ORMER BERTE PLANTE (T)	
LEAD OPERATIONS CHIEF	JEFF SCHARDT	PLANNING OPERATIONS CHIEF	SHAWN NAGLE KEVIN GRODI (T)	
DIVISION/GROUP SUPERVISOR	GREG SALANSKY MATT MOE (T)			
7. Special Instructions:				
<p>Spike Camp is located at Showdown Ski Resort. Minimize impact to the Belt Creek RD. Adhere to food storage order.</p> <p>Trigger points currently for EVACUATION - Tillinghast Creek, FR839, Goblin Gulch for communities to the North and East of the fire.</p> <p>** IN THE EVENT OF AN IWI: Contact DIVIDE COMMUNICATIONS ON COMMAND If unreachable, contact by phone at 208-401-6806</p>				

8. Division/Group Communication Summary						
Function	Channel	RX Frequency N/W	RX Tone/NAC	TX Frequency N/W	TX Tone/NAC	Mode
COMMAND	6	173.8125	107.2	168.4750	107.2	A
COMMAND	7	173.0375	107.2	167.3250	107.2	A
COMMAND	8	169.8125	107.2	164.6750	107.2	A
TACTICAL	1	168.0500	107.2	168.0500	107.2	A
COMMAND	9	171.5000	107.2	164.0000	156.7	A
AIR TO GROUND	13	166.6125		166.6125		A
9. Prepared By (Resource Unit Leader)		Approved By (Planning Section Chief)		Date	Time	
LAILA LIENESCH, RESL		CAROL O'BRYAN, PSC2		07/28/2021	1800	

Division/Group Assignment List (ICS 204 WF)

Controlled Unclassified Information//Basic

1. Incident Name:			3.			
DIVIDE COMPLEX - BALSINGER			Branch:		Division/Group	
2. Operational Period: DAY - NIGHT			III		T	
Date/Time From: 07/29/2021 0600 THU		Date/Time To: 07/30/2021 1000 FRI				
4. Operations Personnel						
BRANCH DIRECTOR JOSH GRAHAM		FIELD OPERATIONS CHIEF TYLER VAN ORMER BERT PLANTE (T)				
LEAD OPERATIONS CHIEF JEFF SCHARDT		PLANNING OPERATIONS CHIEF SHAWN NAGLE KEVIN GRODI (T)				
DIVISION/GROUP SUPERVISOR DANNY GORE MATT KLINDT (T)						
5. Resources Assigned this Period						
Strike Team / Task Force / Resource Designator		LWD	Leader	Number Persons	Drop Off PT./Time	Pick Up PT./Time
E-93 T3 ENG CASTLE MOUNTAIN		08/07	JOHN TILER	3	SHOWDOWN SPIKE /0600	SHOWDOWN SPIKE /2100
E-47 T4 ENG CASTLE MOUNTAIN		07/31	BLANE FIFIELD	3	SHOWDOWN SPIKE /0600	SHOWDOWN SPIKE /2100
E-10 T6 ENG BISHOP ENTERPRISES		08/06	RANDY HAWLEY	3	SHOWDOWN SPIKE /0600	SHOWDOWN SPIKE /2100
E-12 T6 ENG PEANUT PIE		08/09	SAM ELLEINS	3	SHOWDOWN SPIKE /0600	SHOWDOWN SPIKE /2100
E-25 T6 ENG HART		08/04	WYATT LAWRENCE	3	SHOWDOWN SPIKE /0600	SHOWDOWN SPIKE /2100
E-24 T6 ENG TORCH FIRE		08/09	DONAVUN DAVIS	3	SHOWDOWN SPIKE /0600	SHOWDOWN SPIKE /2100
E-52 T2 SKD GRIZZLY		08/01	BRAD SUTTON	2	SHOWDOWN SPIKE /0600	SHOWDOWN SPIKE /2100
E-51 T2 SKD GRIZZLY		08/01	JOSH BURDEN	2	SHOWDOWN SPIKE /0600	SHOWDOWN SPIKE /2100
E-49 T1 FELB ANDREWS		08/01	JESSE SHERRILL	2	SHOWDOWN SPIKE /0600	SHOWDOWN SPIKE /2100
E-76 T1 FELB JOHN STITT CONTRACTING		08/04	JOHN STITT	1	SHOWDOWN SPIKE /0600	SHOWDOWN SPIKE /2100
E-79 LOG DENBOER LOGGING		08/04	WILLIE DENBOER	2	SHOWDOWN SPIKE /0600	SHOWDOWN SPIKE /2100
E-1 T2 WAT LEVIATHAN, INC.		08/08	TRACY SCOTT	2	SHOWDOWN SPIKE /0600	SHOWDOWN SPIKE /2100
E-64 T2 WAT RMFS		08/01	RANDY WALKER	1	SHOWDOWN SPIKE /0600	SHOWDOWN SPIKE /2100
O-3.65 SOF2		08/04	LARRY HOLSOMBACK	1	SHOWDOWN SPIKE /0600	SHOWDOWN SPIKE /2100
E-55 AMBU *** ROVING			KALILOCAY WILLIE	2	SHOWDOWN SPIKE /0600	SHOWDOWN SPIKE /2100
8. Division/Group Communication Summary						
Function	Channel	RX Frequency N/W	RX Tone/NAC	TX Frequency N/W	TX Tone/NAC	Mode
COMMAND	6	173.8125	107.2	168.4750	107.2	A
COMMAND	7	173.0375	107.2	167.3250	107.2	A
COMMAND	8	169.8125	107.2	164.6750	107.2	A
TACTICAL	3	168.6000	107.2	168.6000	107.2	A
COMMAND	9	171.5000	107.2	164.0000	156.7	A
AIR TO GROUND	13	166.6125		166.6125		A
9. Prepared By (Resource Unit Leader)			Approved By (Planning Section Chief)		Date	Time
LAILA LIENESCH, RESL			CAROL O'BRYAN, PSC2		07/28/2021	1800

Division/Group Assignment List (ICS 204 WF)

Controlled Unclassified Information//Basic

1. Incident Name:			3.			
DIVIDE COMPLEX - BALSINGER			III		T	
2. Operational Period: DAY - NIGHT						
Date/Time From: 07/29/2021 0600 THU		Date/Time To: 07/30/2021 1000 FRI				
4. Operations Personnel						
BRANCH DIRECTOR JOSH GRAHAM		FIELD OPERATIONS CHIEF TYLER VAN ORMER BERT PLANTE (T)				
LEAD OPERATIONS CHIEF JEFF SCHARDT		PLANNING OPERATIONS CHIEF SHAWN NAGLE KEVIN GRODI (T)				
DIVISION/GROUP SUPERVISOR DANNY GORE MATT KLINDT (T)						
5. Resources Assigned this Period						
Strike Team / Task Force / Resource Designator		LWD	Leader	Number Persons	Drop Off PT./Time	Pick Up PT./Time
READ - LOCAL			JASON OLTROGGE	1	SHOWDOWN SPIKE /0600	SHOWDOWN SPIKE /2100
6. Control Operations/Work Assignments:						
<p>TASK: Implement tactics to keep fire West of Belt Park. PURPOSE: Ensure fire activity does not get established within and East of Belt Park. END STATE: Fire activity will be kept West of Belt Park.</p>						
7. Special Instructions:						
<p>Spike Camp is located at Showdown Ski Resort. Minimize impact to the Belt Creek RD. Adhere to food storage order.</p> <p>Trigger points currently for EVACUATION - Tillinghast Creek, FR839, Goblin Gulch for communities to the North and East of the fire.</p> <p>** IN THE EVENT OF AN IWI: Contact DIVIDE COMMUNICATIONS ON COMMAND If unreachable, contact by phone at 208-401-6806</p>						
8. Division/Group Communication Summary						
Function	Channel	RX Frequency N/W	RX Tone/NAC	TX Frequency N/W	TX Tone/NAC	Mode
COMMAND	6	173.8125	107.2	168.4750	107.2	A
COMMAND	7	173.0375	107.2	167.3250	107.2	A
COMMAND	8	169.8125	107.2	164.6750	107.2	A
TACTICAL	3	168.6000	107.2	168.6000	107.2	A
COMMAND	9	171.5000	107.2	164.0000	156.7	A
AIR TO GROUND	13	166.6125		166.6125		A
9. Prepared By (Resource Unit Leader)			Approved By (Planning Section Chief)		Date	Time
LAILA LIENESCH, RESL			CAROL O'BRYAN, PSC2		07/28/2021	1800

Division/Group Assignment List (ICS 204 WF)
Controlled Unclassified Information//Basic

1. Incident Name:		3.	
DIVIDE COMPLEX - BALSINGER		Branch:	Division/Group
2. Operational Period: DAY - NIGHT		III	U
Date/Time From: 07/29/2021 0600 THU	Date/Time To: 07/30/2021 1000 FRI		

4. Operations Personnel			
BRANCH DIRECTOR	JOSH GRAHAM	FIELD OPERATIONS CHIEF	TYLER VAN ORMER BERT PLANTE (T)
LEAD OPERATIONS CHIEF	JEFF SCHARDT	PLANNING OPERATIONS CHIEF	SHAWN NAGLE KEVIN GRODI (T)
DIVISION/GROUP SUPERVISOR	BRIAN KEATING GABRIEL TEMPLETON (T)		

5. Resources Assigned this Period					
Strike Team / Task Force / Resource Designator	LWD	Leader	Number Persons	Drop Off PT./Time	Pick Up PT./Time
O-90 HEQB	07/31	EVAN KARP	1	SHOWDOWN SPIKE/0600	SHOWDOWN SPIKE/2100
C-18 HC2IA JACKSON BLM	08/09	DARREN O'LOUGHLIN	21	SHOWDOWN SPIKE/0600	SHOWDOWN SPIKE/2100
T2 DOZ - LOCAL	07/31	CODY WIRTH	1	SHOWDOWN SPIKE/0600	SHOWDOWN SPIKE/2100
O-55 SOF2	08/09	CHRIS FARINETTI	1	SHOWDOWN SPIKE/0600	SHOWDOWN SPIKE/2100
E-55 AMBU ***ROVING	07/31	KALILOCAY WILLIE	2	SHOWDOWN SPIKE/0600	SHOWDOWN SPIKE/2100
READ LOCAL		JUSTINA DUMONT	1	SHOWDOWN SPIKE/0600	SHOWDOWN SPIKE/2100

6. Control Operations/Work Assignments:

TASK: Scout and identify direct and indirect line construction opportunities to keep fire South of Trail 336/Management Action Point (MAP) #7.

PURPOSE: Minimized fire impacts to private lands and spread North of Trail 336/MAP 37.

END STATE: Fire activity will be kept South of Trail 336 (MAP#7).

7. Special Instructions:

**** IN THE EVENT OF AN IWI:**
Contact **DIVIDE COMMUNICATIONS** on **COMMAND**
If unreachable, contact by phone at 208-401-6806

8. Division/Group Communication Summary						
Function	Channel	RX Frequency N/W	RX Tone/NAC	TX Frequency N/W	TX Tone/NAC	Mode
COMMAND	7	173.0375	107.2	167.3250	107.2	A
COMMAND	8	169.8125	107.2	164.6750	107.2	A
TACTICAL	5	166.7750	107.2	166.7750	107.2	A
COMMAND	6	173.8125	107.2	168.4750	107.2	A
COMMAND	9	171.5000	107.2	164.0000	156.7	A
AIR TO GROUND	13	166.6125		166.6125		A

9. Prepared By (Resource Unit Leader)	Approved By (Planning Section Chief)	Date	Time
LAILA LIENESCH, RESL	CAROL O'BRYAN, PSC2	07/28/2021	1800

Division/Group Assignment List (ICS 204 WF)
Controlled Unclassified Information//Basic

1. Incident Name:		3.	
DIVIDE COMPLEX - BALSINGER		III	STRUCTURE
2. Operational Period: DAY - NIGHT			
Date/Time From: 07/29/2021 0600	THU	Date/Time To: 07/30/2021 1000	FRI

4. Operations Personnel			
BRANCH DIRECTOR	JOSH GRAHAM	FIELD OPERATIONS CHIEF	TYLER VAN ORMER BERT PLANTE (T)
LEAD OPERATIONS CHIEF	JEFF SCHARDT	PLANNING OPERATIONS CHIEF	SHAWN NAGLE KEVIN GRODI (T)
DIVISION/GROUP SUPERVISOR	TK KENNEDY		

5. Resources Assigned this Period					
Strike Team / Task Force / Resource Designator	LWD	Leader	Number Persons	Drop Off PT./Time	Pick Up PT./Time
O-140 STEN (T)	08/07	JUSTIN HOLSOMBACK	1	SHOWDOWN SPIKE/0600	SHOWDOWN SPIKE/2100
O-31 FALM JAMISON	08/02	SEAN HICKEY	2	SHOWDOWN SPIKE/0600	SHOWDOWN SPIKE/2100
E-45 T3 ENG RMFS C-5	08/08	GLENN NUTT	3	SHOWDOWN SPIKE/0600	SHOWDOWN SPIKE/2100
E-98 T3 ENG 23	08/10	ERNESTO RENTERIA	4	SHOWDOWN SPIKE/0600	SHOWDOWN SPIKE/2100
E-99 T3 ENG ALPINE FD	08/10	CHRIS CORKER	4	SHOWDOWN SPIKE/0600	SHOWDOWN SPIKE/2100
E-42 T4 ENG CASTLE MOUNTAIN	07/31	RHODINA TSOSIE	3	SHOWDOWN SPIKE/0600	SHOWDOWN SPIKE/2100
E-15 T6 ENG NORTHERN UTAH FIRE	08/07	COREY STONE	3	SHOWDOWN SPIKE/0600	SHOWDOWN SPIKE/2100
E-17 T6 ENG UTAH FIRE COMPANY	08/07	JOHN BEAL	2	SHOWDOWN SPIKE/0600	SHOWDOWN SPIKE/2100
E-16 T6 ENG EAGLE 6	08/07	DENNIS BARCUS	3	SHOWDOWN SPIKE/0600	SHOWDOWN SPIKE/2100
E-18 T6 ENG RMFS	08/07	COLE STANFORD	3	SHOWDOWN SPIKE/0600	SHOWDOWN SPIKE/2100
E-106 T1 WAT BIG SKY	08/09	MITCH HAMEL	2	SHOWDOWN SPIKE/0600	SHOWDOWN SPIKE/2100
E-103 T2 WAT CASTLE MOUNTAIN	08/09	ZACH MANNON	1	SHOWDOWN SPIKE/0600	SHOWDOWN SPIKE/2100
E-105 T2 WAT CASTLE MOUNTAIN	08/09	TIM MCGUIRE	1	SHOWDOWN SPIKE/0600	SHOWDOWN SPIKE/2100
E-44 T2 WAT JOE HESTER LOGGING	08/10	JAMES O'NEIL	1	SHOWDOWN SPIKE/0600	SHOWDOWN SPIKE/2100
E-102 T2 WAT ANDERSEN	08/09	JASON HEITZ	1	SHOWDOWN SPIKE/0600	SHOWDOWN SPIKE/2100

8. Division/Group Communication Summary						
Function	Channel	RX Frequency N/W	RX Tone/NAC	TX Frequency N/W	TX Tone/NAC	Mode
COMMAND	6	173.8125	107.2	168.4750	107.2	A
COMMAND	7	173.0375	107.2	167.3250	107.2	A
COMMAND	8	169.8125	107.2	164.6750	107.2	A
TACTICAL	4	166.7250	107.2	166.7250	107.2	A
COMMAND	9	171.5000	107.2	164.0000	156.7	A
AIR TO GROUND	13	166.6125		166.6125		A

9. Prepared By (Resource Unit Leader)	Approved By (Planning Section Chief)	Date	Time
LAILA LIENESCH, RESL	CAROL O'BRYAN, PSC2	07/28/2021	1800

Division/Group Assignment List (ICS 204 WF)

Controlled Unclassified Information//Basic

1. Incident Name:				3.			
DIVIDE COMPLEX - BALSINGER				III	STRUCTURE		
2. Operational Period: DAY - NIGHT							
Date/Time From: 07/29/2021 0600 THU		Date/Time To: 07/30/2021 1000 FRI					
4. Operations Personnel							
BRANCH DIRECTOR		JOSH GRAHAM		FIELD OPERATIONS CHIEF		TYLER VAN ORMER BERT PLANTE (T)	
LEAD OPERATIONS CHIEF		JEFF SCHARDT		PLANNING OPERATIONS CHIEF		SHAWN NAGLE KEVIN GRODI (T)	
DIVISION/GROUP SUPERVISOR		TK KENNEDY					
5. Resources Assigned this Period							
Strike Team / Task Force / Resource Designator			LWD	Leader	Number Persons	Drop Off PT./Time	Pick Up PT./Time
O-55 SOF2			08/09	CHRIS FARINETTI	1	SHOWDOWN SPIKE/0600	SHOWDOWN SPIKE/2100
O-30 EMPF			07/30	JOE DECKER	1	SHOWDOWN SPIKE/0600	SHOWDOWN SPIKE/2100
E-55 AMBU ***ROVING			07/31	KALILOCAU WILLIW	2	SHOWDOWN SPIKE/0600	SHOWDOWN SPIKE/2100
6. Control Operations/Work Assignments:							
<p>TASK: Continue with structure assessments and mitigation measures within Division I and Division T of the Balsinger Fire.</p> <p>PURPOSE: Ensure any threats to structures are mitigated.</p> <p>END STATE: Threats to structures within Division I and Division T of the Balsinger Fire will be mitigated.</p>							
7. Special Instructions:							
<p>Trigger points currently for EVACUATION - Tillinghast Creek, FR839, Goblin Gulch for communities to the North and East of the fire.</p> <p>** IN THE EVENT OF AN IWI: Contact DIVIDE COMMUNICATIONS on COMMAND If unreachable, contact by phone at 208-401-6806</p>							
8. Division/Group Communication Summary							
Function	Channel	RX Frequency N/W	RX Tone/NAC	TX Frequency N/W	TX Tone/NAC	Mode	
COMMAND	6	173.8125	107.2	168.4750	107.2	A	
COMMAND	7	173.0375	107.2	167.3250	107.2	A	
COMMAND	8	169.8125	107.2	164.6750	107.2	A	
TACTICAL	4	166.7250	107.2	166.7250	107.2	A	
COMMAND	9	171.5000	107.2	164.0000	156.7	A	
AIR TO GROUND	13	166.6125		166.6125		A	
9. Prepared By (Resource Unit Leader)			Approved By (Planning Section Chief)		Date	Time	
LAILA LIENESCH, RESL			CAROL O'BRYAN, PSC2		07/28/2021	1800	

Division/Group Assignment List (ICS 204 WF)
Controlled Unclassified Information//Basic

1. Incident Name:				3.		
DIVIDE COMPLEX - BALSINGER				Branch:		Division/Group
2. Operational Period: DAY - NIGHT				III		IA
Date/Time From: 07/29/2021 0600 THU		Date/Time To: 07/30/2021 1000 FRI				
4. Operations Personnel						
BRANCH DIRECTOR		JOSH GRAHAM		FIELD OEPRATIONS CHIEF		TYLER VAN ORMER BERT PLANTE (T)
LEAD OEPRATIONS CHIEF		JEFF SCHARDT		PLANNING OPERATIONS CHIEF		SHAWN NAGLE KEVIN GRODI (T)
DIVISION/GROUP SUPERVISOR						
5. Resources Assigned this Period						
Strike Team / Task Force / Resource Designator		LWD	Leader	Number Persons	Drop Off PT./Time	Pick Up PT./Time
O-80 TFLD		08/07	MIKE WILLARDSON	1	SHOWDOWN SPIKE/0600	SHOWDOWN SPIKE/2100
T2 HC MODULE BELT CREEK - LOCAL			BOB BUNDY	12	SHOWDOWN SPIKE/0600	SHOWDOWN SPIKE/2100
E-75 T3 ENG CASTLE MOUNTAIN		08/03	SCOTT MCHENRY	3	SHOWDOWN SPIKE/0600	SHOWDOWN SPIKE/2100
E-100 T4 ENG AZ-IMR		08/11	CHAYNE BEST	4	SHOWDOWN SPIKE/0600	SHOWDOWN SPIKE/2100
E-39 T6 ENG DESERT HILLS FD		08/02	JASON SAYRE	3	SHOWDOWN SPIKE/0600	SHOWDOWN SPIKE/2100
E-74 T6 ENG DS FIRE		08/09	BILLIE SMOCK	3	SHOWDOWN SPIKE/0600	SHOWDOWN SPIKE/2100
E-110 T6 ENG MARTIN		08/09	CASEY EHLERS	3	SHOWDOWN SPIKE/0600	SHOWDOWN SPIKE/2100
E-112 T6 ENG FISHER RIVER VALLEY		08/11	LEVI GOOLSBY	3	SHOWDOWN SPIKE/0600	SHOWDOWN SPIKE/2100
T6 ENG 631 - LOCAL			JOE HANSON	3	SHOWDOWN SPIKE/0600	SHOWDOWN SPIKE/2100
E-4 T3 WAT STERLING		08/11	DUANE TURK	1	SHOWDOWN SPIKE/0600	SHOWDOWN SPIKE/2100
6. Control Operations/Work Assignments:						
<p>TASK: Serve as primary responding suppression resources to any initial attack within the Temporary Flight Restrictions (TFR) as identified in the Delegation of Authority.</p> <p>PURPOSE: Keep fire activity within the parameters of initial attack fires.</p> <p>END STATE: Fire is at least 90% contained and has not grown in size for one operational period.</p>						
7. Special Instructions:						
8. Division/Group Communication Summary						
Function	Channel	RX Frequency N/W	RX Tone/NAC	TX Frequency N/W	TX Tone/NAC	Mode
COMMAND	6	173.8125	107.2	168.4750	107.2	A
COMMAND	7	173.0375	107.2	167.3250	107.2	A
COMMAND	8	169.8125	107.2	164.6750	107.2	A
TACTICAL	2	168.2000	107.2	168.2000	107.2	A
COMMAND	9	171.5000	107.2	164.0000	156.7	A
AIR TO GROUND	13	166.6125		166.6125		A
9. Prepared By (Resource Unit Leader)			Approved By (Planning Section Chief)		Date	Time
LAILA LIENESCH, RESL			CAROL O'BRYAN, PSC2		07/28/2021	1800

Division/Group Assignment List (ICS 204 WF)
Controlled Unclassified Information//Basic

1. Incident Name:		3.	
DIVIDE COMPLEX - BALSINGER		Branch:	Division/Group
2. Operational Period: DAY - NIGHT		III	IA
Date/Time From: 07/29/2021 0600 THU	Date/Time To: 07/30/2021 1000 FRI		
4. Operations Personnel			
BRANCH DIRECTOR	JOSH GRAHAM	FIELD OEPRATIONS CHIEF	TYLER VAN ORMER BERT PLANTE (T)
LEAD OEPRATIONS CHIEF	JEFF SCHARDT	PLANNING OPERATIONS CHIEF	SHAWN NAGLE KEVIN GRODI (T)
DIVISION/GROUP SUPERVISOR			

7. Special Instructions:

Stage at Showdown Ski Resort
E-4 WAT Sterling will stage at Helibase

**** IN THE EVENT OF AN IWI:**
Contact **DIVIDE COMMUNICATIONS ON COMMAND**
If unreachable, contact by phone at **208-401-6806**

8. Division/Group Communication Summary						
Function	Channel	RX Frequency N/W	RX Tone/NAC	TX Frequency N/W	TX Tone/NAC	Mode
COMMAND	6	173.8125	107.2	168.4750	107.2	A
COMMAND	7	173.0375	107.2	167.3250	107.2	A
COMMAND	8	169.8125	107.2	164.6750	107.2	A
TACTICAL	2	168.2000	107.2	168.2000	107.2	A
COMMAND	9	171.5000	107.2	164.0000	156.7	A
AIR TO GROUND	13	166.6125		166.6125		A

9. Prepared By (Resource Unit Leader)	Approved By (Planning Section Chief)	Date	Time
LAILA LIENESCH, RESL	CAROL O'BRYAN, PSC2	07/28/2021	1800

Division/Group Assignment List (ICS 204 WF)
 Controlled Unclassified Information//Basic

1. Incident Name:				3.		
DIVIDE COMPLEX - BALSINGER				III	Division/Group NIGHT	
2. Operational Period: DAY - NIGHT						
Date/Time From: 07/29/2021 0600 THU		Date/Time To: 07/30/2021 1000 FRI				
4. Operations Personnel						
BRANCH DIRECTOR		JOSH GRAHAM		FIELD OPERATIONS CHIEF		TYLER VAN ORMER BERT PLANTE (T)
LEAD OPERATIONS CHIEF		JEFF SCHARDT		PLANNING OPERATIONS CHIEF		SHAWN NAGLE KEVIN GRODI (T)
DIVISION/GROUP SUPERVISOR						
5. Resources Assigned this Period						
Strike Team / Task Force / Resource Designator		LWD	Leader	Number Persons	Drop Off PT./Time	Pick Up PT./Time
O-151 TFLD		08/09	DARIN GROFF	1	SHOWDOWN SPIKE/1800	SHOWDOWN SPIKE/1000
E-40 T6 ENG GREEN VALLEY FD		08/03	MIKE CARRAFA	3	SHOWDOWN SPIKE/1800	SHOWDOWN SPIKE/1000
E-41 T6 ENG FLAME CHASERS		08/01	EDWIN HILL	3	SHOWDOWN SPIKE/1800	SHOWDOWN SPIKE/1000
E-46 T4 ENG FMFS		07/31	SHANE STREHLE	3	SHOWDOWN SPIKE/1800	SHOWDOWN SPIKE/1000
6. Control Operations/Work Assignments:						
TASK: Monitor and implement tactics to hold containment lines during nighttime hours.						
PURPOSE: Ensure daytime tactics implemented continue to mitigate any threats.						
END STATE: Fire will be kept within the containment lines.						
7. Special Instructions:						
** IN THE EVENT OF AN IWI:						
Contact DIVIDE COMMUNICATIONS ON COMMAND						
If unreachable , contact by phone at 208-401-6806						
8. Division/Group Communication Summary						
Function	Channel	RX Frequency N/W	RX Tone/NAC	TX Frequency N/W	TX Tone/NAC	Mode
COMMAND	6	173.8125	107.2	168.4750	107.2	A
COMMAND	7	173.0375	107.2	167.3250	107.2	A
COMMAND	8	169.8125	107.2	164.6750	107.2	A
TACTICAL	3	168.6000	107.2	168.6000	107.2	A
COMMAND	9	171.5000	107.2	164.0000	156.7	A
AIR TO GROUND	13	166.6125		166.6125		A
9. Prepared By (Resource Unit Leader)			Approved By (Planning Section Chief)		Date	Time
LAILA LIENESCH, RESL			CAROL O'BRYAN, PSC2		07/28/2021	1800

AIR OPERATIONS SUMMARY

Prepared By: Tim Elder

Prepared Date: 7.28.21

Prepared Time: 1800

INCIDENT NAME: American Fork/Divide Complex	OPS PERIOD DATE: July 29, 2021	START TIME: 0800	END TIME: 2000	Sunrise: 0602	Sunset: 2057
3. REMARKS (Safety Notes, Hazards, and Air Operations Special Equipment, etc.): Hazards – Poor Visibility due to smoke, anticipate general and fire aviation traffic. Use caution when utilizing non-towered airports. See and Avoid.			MEDEVAC: Short Haul – N401HQ - Josh Ingles 406-461-4433 Air Ambulance Frequency - “Tan” 155.3400 TX tone 156.7		TFR #: American Fork 1/1480 7nm 12,500 msl Balsinger 1/6366 7 nm 11,000 msl
Helicopter requests can be made directly to the helibase via Command.					

PERSONNEL	NAME	PHONE #	FREQUENCIES	AM	FM	FIXED-WING- Type/ Make-Model/ N#/ Base
AOBD	Tim Elder	863-610-0096	A/G Ellis		168.7375	AIRTANKERS – Order through Air Attack if on scene, otherwise through AOBD.
ASGS (T)	Brian Butler	970-946-8068	A/G Balsinger - A/A TFR/FW - A/A RW	125.125 134.675	166.6125	LEAD PLANES- Available through dispatch.
HEBM	John Nobles	239-777-8455	A/G American Fork - A/A TFR/FW - A/A RW	119.100 128.250	169.1500	AERIAL SUPERVISION- N700FW (Kodiak). Relief ATGS avail on request through dispatch.
HEBM (T)	Josh Bardwell	936-546-1915				SEATS- Available through Dispatch
ATGS	Steve Little	828-778-2077				

HELICOPTERS

FAA N#	T	MAKE/ MODEL	BASE	START	AVAIL	REMARKS	FAA N#	T	MAKE/ MODEL	BASE	START	AVAIL	REMARKS
N948CH	1	CH-47	7S6	0800	0900	R1 Prepo	N406RG	1	Puma	HLN	0800	0900	R1 Prepo
N353RC	2	UH-1H	7S6	0800	0900	OOS MECH	N4247V	2	58T	HLN	0800	0900	R1 Prepo
N210MA	2	Bell 210	7S6	0800	0900	R1 Prepo	N401HQ	3	AS350B3	HLN	0800	0900	Forest Ship
H-14HX	3	Bell 407	7S6	0800	0900	EU							

TASK/ MISSION/ ASSIGNMENT (Type/ function includes: Air Tactical, Retardant, Recon, Personnel Transport, Bucket Operations, SAR, etc.

TYPE/FUNCTION	NAME OF PERSONNEL OR CARGO (If applicable) or instructions for tactical aircraft	MISSION START	FLY FROM	FLY TO
Recon	As Requested	As Requested		
Bucket Support / Supply Missions	As Requested	As Requested		
Personnel Transport	As Requested	As Requested		
Aerial Supervision	As Requested	As Requested		

HEALTH AND SAFETY MESSAGE

SAFETY starts with **YOU**

We are **ALL** accountable for **SAFE** behaviors

INCIDENT: **Divide Complex/American Fork Fire**

DATE: July 29, 2021

Major Hazards and Risks: Driving, Hazard Trees, and Heavy Equipment

Hazard Trees: *Work is shifting into new areas of the fire. Check these new areas for snags and mitigate them before engaging in work. Some of these snags are not visible from roads but could easily reach you if they fall.*

Driving: *New work assignments may take you on new roads with hazards you have not seen before. Some of the incident roads are narrow with limited visibility and few pull-outs. Increased fire traffic and residents should be expected around homes. Adjust your driving for smoke, dust and night operations. Watch out for wildlife and livestock.*

Heavy Equipment: *Dozers, feller-bunchers, and skidders are working on this incident. Don't approach heavy equipment until you are certain they have seen you and signaled for you to continue. Give them sufficient space on roads and in work areas.*



3. SAFETY ZONES AND ESCAPE ROUTES
NOT IDENTIFIED

Communicable Diseases

Camp situation brings a lot of people together in close quarters. We share a lot of air, surfaces and places.

Let's not share diseases. Wash your hands often and use hand sanitizer, especially before entering the food area and before leaving the latrine area.

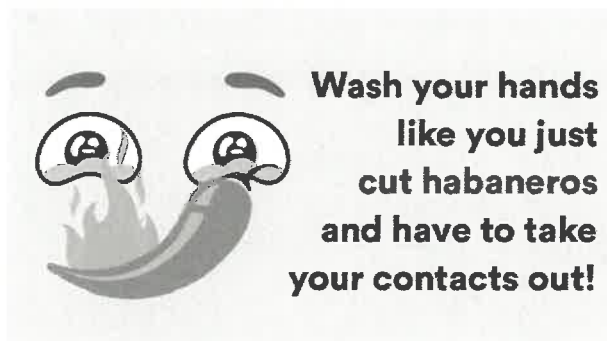
Safety Officers: Buddy Kelley, Paul Churchill, Jeff Henderson (T), Larry Holsomback, Shawn Duggar, and Chris Farinetti

215a Divide Complex / American Fork - Thursday, July 29, 2021

8. Location	9. Hazard	6. Control or Abatement Action (Engineering, Administrative, PPE, Avoidance, Education, etc)
All	Air Operations	<ul style="list-style-type: none"> ~ Ensure positive communication with all air resources. ~ Don't plan on air resources for medical transport or resupply. ~ Follow "Aviation Watch-Out Situations" IRPG Pg 46. ~ Refer to "Directing Bucket or Retardant Drops" IRPG Pg 58 . ~ Refer to "Aerial Retardant Safety" IRPG Pg57. ~ Refer to "Aircraft Mishap Response Procedure" IRPG Pg 62.
All	Extreme Fire Behavior	<ul style="list-style-type: none"> ~ Share weather observations with all personnel assigned to division. ~ Establish "Trigger Points" to withdraw. ~ Use "Risk Management" process prior to engaging in suppression actions IRPG Pg 1. ~ Refer to "Common Denominators of Fire Behavior Tragedy Fires" IRPG Pg 5. ~ Refer to "Alignments & Patterns for Dangerous Fire Behavior" IRPG Pg 73
All	Fireline Hazards	<ul style="list-style-type: none"> ~ Refer to "Fireline Location" considerations, IRPG Pg 84 ~ Do not work directly above or below personnel during firing and mop-up operations. ~ Watch for falling and rolling debris on steep slopes. ~ Alert crew personnel of rolling debris by yelling to affected individuals. ~ Position debris that could roll vertically on slope. ~ Avoid stepping over debris that could roll by walking around object. ~ Avoid radiant heat by wearing appropriate PPE correctly. ~ Flag and isolate all HAZMAT and alert all personnel working in Division. ~ Follow WUI recommendations, IRPG Pg 12.
All	Heat Related Illness (HRI)& Dehydration	<ul style="list-style-type: none"> ~ Refer to Heat Related Illness information, IRPG Pg 109 ~ Drink Fluids throughout operational period (6-8 qts/shift). ~ Maintain water/electrolyte ratio of 3 to 1. ~ Carry extra water on line and cache water at drop points. ~ Take Frequent breaks, minimum of 10 minutes every hour. ~ Allow out of area resources time to acclimatize before expecting peak performance.
All	Hazard Trees	<ul style="list-style-type: none"> ~ Follow "Hazard Tree Safety" guidelines, IRPG page 22. ~ Post lookouts, or use a spotter in mop-up areas with personnel. ~ Don't park vehicles or take breaks in high concentrations of hazard trees. ~ Establish trigger points for disengagement during high wind events. ~ Remember that the hazard zone extends a minimum of 2 1/2 tree heights.
All	Firing Operations & Devices	<ul style="list-style-type: none"> ~ Only personnel trained in the use of each device will be authorized to use firing equipment. ~ Ensure all personnel are aware of firing operation that may affect them. ~ Wear appropriate PPE. ~ Ensure aerial/ground ignition plans have been adequately developed and personnel are briefed.
All	Power Utilities	<ul style="list-style-type: none"> ~ Refer to the IRPG page 24 for Power Line Safety. ~ Notify all personnel of down electrical lines. ~ Always treat downed wires as energized. ~ Identify and avoid high tension transmission lines. ~ Identify and avoid high pressure natural gas lines. ~ Identify and avoid damaged gas service near structures. ~ Be aware of utility restoration in your work area.

Ellis Fire	Mop-up & Suppression Repair	<ul style="list-style-type: none"> ~ Do not work above or below personnel during rehab/mop-up operations. ~ Alert crew personnel of rolling debris by yelling to affected individuals. ~ Position debris that could roll vertically on slope. ~ Wear eye protection.
All	Chain Saw Operations	<ul style="list-style-type: none"> ~ Follow "Hazard Tree Safety" guidelines, IRPG Pg 22~ Follow "Procedural Felling Operations" IRPG Pg 85 ~ Look up, Look down, Look around for hazard tree indicators. ~ Only fell and buck trees within your expertise, and training. ~ Do not fall trees during high wind events. ~ Ensure proper use of all required PPE.
All	Heavy Equipment Operations	<ul style="list-style-type: none"> ~ Refer to "Working with Heavy Equipment" IRPG Pg 86 ~ Ensure communications are established with operators. ~ Use hand signals if other communications are unavailable. ~ Maintain a 300 feet exclusion area around equipment and increase it to 1 1/2 times tree height when in timber. ~ Use a spotter when backing. ~ Avoid working below heavy equipment. ~ Brush Chippers: Ensure that Job Hazard Analysis are reviewed and signed by all crew members working with or around them.
All	Structure Protection & HAZMAT	<ul style="list-style-type: none"> ~ Review "Wildland Urban Interface Firefighting" considerations, IRPG Pg 12-16 ~ Use "Structure Assessment" checklist, IRPG Pg 13 ~ Refer to "Structure Hazard Marking System" IRPG Pg 41 ~ Follow "HAZMAT Incident Operations" IRPG Pg 36
All	Driving & Traffic	<ul style="list-style-type: none"> ~ Practice "Defensive Driving" techniques traveling on all roads and city streets. ~ Use spotters when backing. ~ Always use headlights. ~ Yield to pedestrians, wildlife and livestock. ~ Observe posted speed limits. ~ Use the 3 second rule for following distance when driving. ~ Use chock blocks, turn wheels into hill. ~ Avoid distractions (eating, cell phones, radio). ~ Ensure that windshields are kept clean of dust and bugs. ~ ATV and UTV traffic in town and on all roads.
All	ATV/UTV use	<ul style="list-style-type: none"> ~ Ensure equipment is inspected and safe to use. ~ Restrict UTV's to max width of 50" on ATV trails due to width and severe out sloped conditions. ~ Ensure operator is trained and certified to operate. ~ Ensure operator has proper PPE according to the Redbook and/or RMA. ~ Question if it is mission critical.
All	Communications	<ul style="list-style-type: none"> ~ Maintain communication with aviation resources, and suppression organization. ~ Ensure all know frequency and protocol for contacting resources. ~ Utilize the ICS 205. ~ Utilize human repeaters when working in dead spots.
All	Wildlife & Livestock	<ul style="list-style-type: none"> ~ Watch out for wildlife & livestock inside fire area and along roadways. ~ Clean up all food and trash during each operational period. ~ Store all food in bear proof containers or in vehicles. ~ Slowly back away from any wildlife that you encounter.

COVID Mitigations and Screening Tool



Maintain Situational Awareness of The Fire Environment: 10 & 18, LCES

- Monitor each other, watch for symptoms (Firefighter Health Screening Tool).
- Never share PPE, UTV & flight helmets, radios, or other equipment
- Implement daily decontamination procedures of apparatus and equipment
- Adjust operational periods to allow for additional COVID-19 logistics.
- Plan for overnight lodging/camping/feeding scenarios that maintain separation from other fire personnel and community

WILDLAND FIRE COVID-19 SCREENING TOOL

Today or in the past 24 hours, have you had any of the following symptoms¹?

Symptom
Cough more than expected?
Shortness of breath or difficulty breathing?
Fever? Chills?
Muscle pain, outside your normal for firefighting?
Sore throat?
New loss of taste or smell?
Fatigue, outside your normal for firefighting?
Headache, outside your normal for firefighting?
Congestion or runny nose, outside your normal for firefighting?
Nausea or vomiting
Diarrhea
<i>* Take temperature with no-touch thermometer, if available *</i>

MEDICAL PLAN (ICS 206 WF)

Incident/Project Name	1. Operational Period
Divide Complex/American Fork	Day Shift / Night Shift July 29, 2021 0600 - July 30, 2021 1000

2. Ambulance Services			
Name	Complete Address	Phone & EMS Frequency	Advanced Life Support (ALS) Yes No
Meagher County Volunteer Ambulance	White Sulphur Springs, MT	406-547-3397 or 911	No
Belt Ambulance (Balsinger Fire Response Area)	Belt, MT	911	No

3. Air Ambulance Services		
Name	Phone	Type of Aircraft & Capability
Mercy Flight (Rotor & Fixed Wing)	800-972-4000	Air Ambulance, NVG Capable. (Use TAN Channel 15 155.3400 for contact with helicopter) For Fixed Wing Transports -Ambo will transport to White Sulphur Springs Airport
Life Flight Network	800-232-0911	Air Ambulance, NVG Capable. (Use TAN Channel 15 155.3400 for contact with helicopter)
Two Bear Rotor	406-758-5610	Rotor- Bell 429 Hoist Capable- NVG Capable. Must be ordered as Medical Transport

4. Hospitals								
Name Complete Address	GPS Datum – WGS 84 Coordinate Standard Degrees Decimal Minutes DD° MM.MMM' N - Lat DD° MM.MMM' W - Long		Travel Time		Phone	Helipad Yes No		Level of Care Facility
	Lat:	Long:	Air	Grnd		Yes	No	
Mtn View Medical Center 16 West Main White Sulphur Springs, MT	N 46° 32.870	W 110° 54.396	10 Min	40 Min	406-547-3321	X		Stabilize & Transfer
St Peters Health 2475 E Broadway St Helena, MT	N 46° 34.939	W 111° 59.764	20 Min	140 Min	406-442-2480	X		Area Trauma Center
Benefis Health System 1101 26 th St S Great Falls, MT	N 47° 29.510	W 111° 15.588	30 Min	60 Min	406-543-7271	X		Level 2 Trauma Center
Univ. Of Utah Health 50 N Medical Dr. Salt Lake City, UT	N 40° 46.361	W 111° 50.240	90+ Min	NA	801-581-2700	X		Designated Burn Center

5. Division Branch Group	Area Location Capability	
DIVISION I Balsinger	EMS Responders & Capability:	O-37 EMTF Emma Kashian (Alpha)
	Equipment Available on Scene:	4x4 Vehicle BLS Kit
	Medical Emergency Channel:	Contact Divide Communications on Command or by phone 208-401-6806
	ETA for Ambulance to Scene:	
	Air:	25-60 Minutes Including Spin Up Time
	Ground:	30 Minutes to Spike 80 Minutes to Fire
	Approved Helispot:	H1
	Lat:	46.51.497
	Long:	110.40.703

DIVISION T Balsinger	EMS Responders & Capability	
	Equipment Available on Scene:	
	Medical Emergency Channel:	Contact Divide Communications on Command or by phone 208-401-6806
	ETA for Ambulance to Scene:	
	Air:	25-60 Minutes Including Spin Up Time
	Ground:	30 Minutes to Spike 80 Minutes to Fire
	Approved Helispot:	
	Lat:	
	Long:	

MEDICAL PLAN (ICS 206 WF)

DIVISION U Balsinger	EMS Responders & Capability	EMPF K Willie & EMTF A MacArthur AMBO 1
	Equipment Available on Scene:	4x4 ALS Ambulance – roving to DIV I
	Medical Emergency Channel:	Contact Divide Communications on Command or by phone 208-401-6806
	ETA for Ambulance to Scene:	
	Air:	25-60 Minutes Including Spin Up Time
	Ground:	30 Minutes to Spike 80 Minutes to Fire
	Approved Helispot:	
	Lat:	
Long:		

DIVISION Structure Balsinger	EMS Responders & Capability	O-30 EMPF Joe Decker
	Equipment Available on Scene:	4x4 ALS Ambulance – roving to DIV I
	Medical Emergency Channel:	Contact Divide Communications on Command or by phone 208-401-6806
	ETA for Ambulance to Scene:	
	Air:	25-60 Minutes Including Spin Up Time
	Ground:	30 Minutes to Spike 80 Minutes to Fire
	Approved Helispot:	
	Lat:	
Long:		

DIVISION E/Q Ellis	EMS Responders & Capability	E-34 EMTF Corbin, EMTF Fallis
	Equipment Available on Scene:	4x4 vehicle, BLS Kit
	Medical Emergency Channel:	Contact Divide Communications on Command or by phone 208-401-6806
	ETA for Ambulance to Scene:	
	Air:	25-60 Minutes Including Spin Up Time
	Ground:	30 Minutes to 60 minutes depending on location
	Approved Helispot:	
	Lat:	
Long:		

DIVISION A American Fork	EMS Responders & Capability	E-33 EMTF Rosenberg, EMTF Dorrance
	Equipment Available on Scene:	4x4 BLS Ambulance
	Medical Emergency Channel:	Contact Divide Communications on Command or by phone 208-401-6806
	ETA for Ambulance to Scene:	
	Air:	25-60 Minutes Including Spin Up Time
	Ground:	30 – 60 Minutes depending on location
	Approved Helispot:	
	Lat:	
Long:		

DIVISION M American Fork	EMS Responders & Capability	
	Equipment Available on Scene:	
	Medical Emergency Channel:	Contact Divide Communications on Command or by phone 208-401-6806
	ETA for Ambulance to Scene:	
	Air:	25-60 Minutes Including Spin Up Time
	Ground:	30 – 60 Minutes depending on location
	Approved Helispot:	
	Lat:	
Long:		

DIVISION P American	EMS Responders & Capability	E-60 EMTF Mizrahi, EMTF Conway
	Equipment Available on Scene:	BLS 4x4 Vehicle
	Medical Emergency Channel:	Contact Divide Communications on Command or by phone 208-401-6806
	ETA for Ambulance to Scene:	
	Air:	25-60 Minutes Including Spin Up Time
	Ground:	30 - 60 Minutes depending on location
	Approved Helispot:	
	Lat:	

MEDICAL PLAN (ICS 206 WF)

Fork	Long:	
-------------	-------	--

ICP	EMS Responders & Capability	MEDL(t) Sherri McDougal
	Equipment Available on Scene:	100 man kit
	Medical Emergency Channel:	Contact Divide Communications on Command or by phone 208-401-6806
	ETA for Ambulance to Scene:	
	Air:	25-60 Minutes Including Spin Up Time
	Ground:	5-25 minutes depending on volunteer staffing
	Approved Helispot:	
	Lat:	
Long:		
6. Prepared by	7. Date/Time	8. Reviewed by Safety Officer
Sherri McDougal MEDL(t)	07/28/21 1810	<i>[Signature]</i> SOF2 7/28/21

American Fork AND Divide Complex Overnight Medical Incidents – contact DIVIDE COMMUNICATIONS on COMMAND, or if unreachable, contact by phone 208-401-6806.

Balsinger will be using Belt Ambulance as fire is in Cascade County. Complete Medical Incident Report (8 line) per process with responding dispatch center.

INCIDENT RADIO COMMUNICATIONS PLAN (ICS 205)

Controlled Unclassified Information//Basic

1. Incident Name: American Fork		2. Date/Time Prepared: Date: 07/28/2021 Time: 1600		3. Operational Period: Date/Time From: 07/29/2021 0600 THRU		Date/Time To: 07/30/2021 0600					
4. Basic Radio Channel Use:											
Zone Group	Ch #	Function	Channel Name/Trunked Radio System Talkgroup	Assignment	RX Freq	RX Tone/NAC	TX Freq	TX Tone/NAC	Mode (A,D, or M)	Remarks	
2	1	CMD	CMD 4		169.7500	107.2	167.1000	107.2	A		
2	2	CMD	SUNLIGHT		171.5000		164.0000	107.2	A		
2	3	Tactical	RED		154.0700		154.0700	131.8	A		
2	4	Tactical	COMMON USE 1	DIV M	168.6125		168.6125	156.7	A		
2	5	Tactical	COMMON USE 2	DIV P	163.7125		163.7125	146.2	A		
2	6	Tactical	LCNF TAC	DIV A	166.9875		166.9875	114.8	A		
2	7	Tactical	YELLOW		151.2200		151.2200	110.9	A		
2	8	Tactical	HFDIR		171.1375		171.1375	107.2	A		
2	9	Tactical	MGHR FIRE 1		154.4000		154.4000	100.0	A		
2	10	RPT	CASCADE LAW		154.7700		155.5800	151.4	A		
2	11	Tactical	MEAGHER DES S		155.0250		155.0250	107.2	A		
2	12	Tactical	MGHR DES RPTR		155.0250		158.7750	107.2	A		
2	13	Air Ground	NIFC AVG		169.1500		169.1500		A	NIFC Air to Ground	
2	14	Air Ground	AVG 52		168.3875		168.3875		A	Local Air to Ground	
2	15	Medivac	Tan		155.3400		155.3400	156.7	A	Air Ambulance	
2	16	AIR GUARD	AIR GUARD		168.6250		168.6250	110.9	A		
5. Special Instructions: Use Human Repeater When Necessary. All Medical calls use Command 4/Channel 1 to Divide Communications to Initiate IWL. Divide Communications Cell - 208-401-6806											
6. Prepared By (Communications Unit Leader)				Name: SHANNON HERRING				Signature:			
ICS 205				IAP Page				Date/Time: 07/28/21 1600			

Controlled Unclassified Information//Basic DRAFT

INCIDENT RADIO COMMUNICATIONS PLAN (ICS 205)

Controlled Unclassified Information//Basic

1. Incident Name: Divide Complex	2. Date/Time Prepared: Date: 07/28/2021 Time: 1930	3. Operational Period: Date/Time From: 07/29/2021 0600 Date/Time To: 07/30/2021 0600
--	---	---

4. Basic Radio Channel Use:										
Zone Group	Ch #	Function	Channel Name/Trunked Radio System Talkgroup	Assignment	RX Freq	RX Tone/MAC	TX Freq	TX Tone/MAC	Mode (A, D, or M)	Remarks
1	1	Tactical	Tac 1	Div I "Balsinger"	168.0500	107.2	168.0500	107.2	A	Division India "Balsinger"
1	2	Tactical	Tac 2	IA	168.2000	107.2	168.2000	107.2	A	Initial Attack
1	3	Tactical	Tac 3	Div T "Balsinger"	168.6000	107.2	168.6000	107.2	A	Division Tango "Balsinger"
1	4	Tactical	Tac 4	Structure "Balsinger"	166.7250	107.2	166.7250	107.2	A	Structure Division "Balsinger"
1	5	Tactical	Tac 5	Div E/Q "Ellis"	166.7750	107.2	166.7750	107.2	A	Division Echo/Quebec "Ellis"
1	6	Command	CMD1	Div U "Balsinger"	173.8125	107.2	168.4750	107.2	A	Division Uniform "Balsinger" Air Ops for "Balsinger" & "Ellis" Prohibit L.O. Showdown
1	7	Command	CMD2	All Division	173.0375	107.2	167.3250	107.2	A	Big Baldy Min
1	8	Command	CMD3	All Division	169.8125	107.2	164.6750	107.2	A	Monument Mtn
1	9	Command	Big Bald	All Division	171.5000	103.5	164.0000	103.5	A	USFS Dispatch Big Baldy "Balsinger"
1	10	Command	Monument		171.5000	103.5	164.0000	103.5	A	USFS Dispatch Monument
1	11	Tactical	Yellow		151.2200		151.2200		A	
1	12	Tactical	Red		154.0700		154.0700		A	
1	13	Air Ground	A/G PRI		166.6125		166.6125		A	BALSINGER A/G
1	14	Air Ground	A/G SEC		168.7375		168.7375		A	ELLIS A/G
1	15	Medvac	Tan		155.3400		155.3400		A	Air Ambulance
1	16	AIR GUARD	AIR GUARD		168.6250		168.6250		A	

5. Special Instructions: Use Human Repeater When Necessary. All Medical calls through Command Repeaters to Divide Communication to Initial an IMI

6. Prepared By: (Communications Unit Leader) Name: SHANNON HERRING

Signature: _____

Date/Time: 07/28/21 **1600**

Weed Wash

OPEN UNTIL 2100



Mandatory when:

- Checking in
- Moving between fires
- Demob

Located 1.3 miles west of US 89 on
Luppold Rd (AKA Cemetery Rd).

Finance

Send your CTRs and Shift Tickets to the email below that correlates with the fire on your resource order, even if you are working on different fire.

2021.divide.finance@firenet.gov

2021.americanfork.finance@firenet.gov

CTRs/Shift Ticket – Please document what fire and division you are working on in the comment section of each CTR or Shift Ticket. This will help us with cost share information on the fire.

Common mistakes: missing dates, wrong dates, missing order number, picture does not show supervisors signature.

Document reason for Hazardous Pay on CTR.

Last working day – please contact finance via email two days prior to your demob day.

If you are an AD please send your casual hire form to the correct email address above. Use the email address that corresponds to the fire on your resource order.

Finance Remote Processing Procedures

To the right is access to electronic Finance forms. You can access them via the QR code or the URL. On each form are four buttons PRINT, RESET, SAVE and EMAIL. You can complete these forms on your cell phone, tablet or laptop. They are Adobe PDF forms so you will need a PDF reader app on your device. The forms were created on a laptop so the commands in your cell phone and tablet do not allow for the Save and Print functions to work. You will need to use your app's functionality to Save or Print.

Once you have completed the appropriate form for your resource please email to your supervisor for approval.

Supervisors can use their app to apply a signature or just type /s/ your name on the approval line. After approving please email the approved form back to the resource for their record and to the correct finance email:

2021.americanfork.finance@firenet.gov

2021.divide.finance@firenet.gov

Resources: Please send photos or electronic copies of Casual hire forms, contracts, Cooperative agreements, Vehicle inspection, Manifests and resource orders to the correct finance email:

2021.americanfork.finance@firenet.gov

2021.divide.finance@firenet.gov



Crew Time Report



Shift Ticket



Emergency Fuel and Oil Ticket



General Message



Human Resource Message

The mission of the Gold Team is to safely, effectively and efficiently manage the Divide Complex and American Fork Fire by maintaining a team of skilled and productive personnel. During this incident we will strive to successfully complete our mission and achieve our objectives while creating a positive, drug and alcohol free work environment for all assigned incident personnel. Consumption of drugs that alter decision making abilities, such as marijuana and alcohol, is prohibited while assigned to the incident.

The Gold Team fully supports EEO and will not tolerate sexual harassment or any form of discrimination!

All inappropriate behavior will be dealt with promptly. Disciplinary action and reporting back to an individual's home unit will be initiated as necessary.

Please report any incidents of inappropriate behavior to your supervisor, Marty Bentley or myself immediately.

Deborah Beard, Incident Commander



TRAINING MESSAGE

As of 27th e-ISuite show that there are 43 TRAINEES ordered to this Incident.

However, 27 only have checked in with the Incident Training Specialist

Check-in – If you have a position task book (PTB), please scan the QR code or click the link below to initiate the check-in process with the Incident Training Specialist. Please complete the form in its entirety. Upon completion, at your earliest convenience, **please email a copy of your qualification card and position task book cover to Al Hoke at ahoke@gfc.state.ga.us.**

For your convenience, an electronic ICS-225 or ICS-226 and Evaluation Record will be sent to you after you complete the check-in process. Electronic Evaluation Records, Trainee Data Forms can also be provided.



<https://forms.office.com/g/25cqnByq71>

Demob – In order to receive credit for your assignment, you must close out with the Incident Training Specialist prior to departure.





Southern Area Incident Management Gold Team Fire Information

[Divide Complex-Balsinger Fire Information - InciWeb the Incident Information System \(nwcg.gov\)](#)

[Divide Complex-Ellis Fire Information - InciWeb the Incident Information System \(nwcg.gov\)](#)

[American Fork Fire Information - InciWeb the Incident Information System \(nwcg.gov\)](#)

[Helena-Lewis and Clark National Forest - Home | Facebook](#)

[Custer Gallatin National Forest - Home | Facebook](#)

[Helena-Lewis and Clark National Forest - Home \(usda.gov\)](#)

[Custer Gallatin National Forest - Home \(usda.gov\)](#)

Fire Information Line: **406-272-6349** (8 a.m. – 8 p.m.)

Help us tell our story by submitting photos and videos of life on the fireline.

We need your help to capture the shots that show what we're doing and how we're doing it. Please scan the code below to submit. Adding your name and location of the photo is ideal. Any extra information is appreciated, but not mandatory.

We are guests in this area. Be aware that photos posted to personnel accounts may contain sensitive information. Send all photos through Information Officer to ensure they are appropriate and represent the Gold Team and our partners well. Personal protective equipment is required in any photos that will be utilized to tell the story of the fire.

American Fork

Divide Complex



SUBMIT YOUR PHOTOS & VIDEOS

Tentative DEMOB List

Divide Complex and American Fork

INCIDENT NAME	DEMOB	REQ #	RESOURCE NAME	KIND	TRV	CITY	STATE
AMERICAN FORK	07/30/2021	E-23	IL-SHF - E-621	ENG6	AOV	MURPHYSBORO	IL
AMERICAN FORK	07/30/2021	O-11	SCARLETT, RANDALL LEE	READ	AOV	W. YELLOWSTONE	MT
DIVIDE COMPLEX	07/30/2021	O-71	FOSNESS, ELDO LUKE	TFLD	AOV	RED LODGE	MT
DIVIDE COMPLEX	07/31/2021	E-28	GR. WAT. THOMAS PETERS	GWT4	POV	WHITEHALL	MT
DIVIDE COMPLEX	07/31/2021	E-44	GIST ENGINE - T4	ENG4	POV	CASCADE	MT
DIVIDE COMPLEX	07/31/2021	E-61	WEED WASH DULANEY UCC LLC	WEED	POV	HELENA	MT
DIVIDE COMPLEX	07/31/2021	O-30	BEST PRACTICE MEDICINE LLC	EMPF	POV	BILLINGS	MT
DIVIDE COMPLEX	07/31/2021	O-37	KASHIAN, EMMA	EMTF	POV	HAMILTON	MT
AMERICAN FORK	07/31/2021	O-53	BYRD, ROCK MCINTYRE	TFLD	AOV	HARLOWTON	MT
DIVIDE COMPLEX	07/31/2021	O-77	MARKHAM, TODD JAMES	TFLD	AR	MARQUETTE	MI
DIVIDE COMPLEX	07/31/2021	S-24	MOBILE FOOD SERVICE	CTR		CODY	WY
DIVIDE COMPLEX	08/01/2021	C-8	BLUE MOUNTAIN CONTRACTING, INC.	HC2	POV	BENTON CITY	WA
DIVIDE COMPLEX	08/01/2021	E-22	AUSTIN LOGGING	SKD3	POV	WOLF CREEK	MT
DIVIDE COMPLEX	08/01/2021	E-35	PEANUT PIE ENT.	ENG6	POV	BASIN	MT
DIVIDE COMPLEX	08/01/2021	E-37	HE TASK FORCE KING MNT. FOR.	MISC	POV	HELENA	MT
DIVIDE COMPLEX	08/01/2021	E-42	BAKKEN, BRANDON -F51987	ENG4	POV	TOWNSEND	MT
DIVIDE COMPLEX	08/01/2021	E-47	BAKKEN, BRANDON A10058	ENG4	POV	TOWNSEND	MT
DIVIDE COMPLEX	08/01/2021	E-49	SHERRILL, WAYNE - FT4C-120	FEL1	POV	LINCOLN	MT
DIVIDE COMPLEX	08/01/2021	E-51	MISC - SKIDDER, T2 - 536196	SKD2	AOV	KALISPELL	MT
DIVIDE COMPLEX	08/01/2021	E-52	MISC - SKIDDER, T2 - 577038	SKD2	POV	KALISPELL	MT
DIVIDE COMPLEX	08/01/2021	E-55	HDC 2 ALS AMBO WMI MT 01	AMBU	POV	HAMILTON	MT
DIVIDE COMPLEX	08/01/2021	E-60	FRONT LINE EMS LLC	RES	POV	VALE	CO
AMERICAN FORK	08/01/2021	O-63	GONZALES, RACHAEL	PIOF	REN	FORT COLOLINS	CO
DIVIDE COMPLEX	08/01/2021	O-79	KEATING, BRIAN	DIVS	AOV	DENVER	CO
DIVIDE COMPLEX	08/01/2021	O-90	KARP, EVAN ELLIOT	HEQB			
DIVIDE COMPLEX	08/02/2021	E-41	FLAME CHASER ASSOC.	ENG6	POV	BROWNING	MT
DIVIDE COMPLEX	08/02/2021	E-64	ROCKY MOUNTAIN FIRE SUP	WTS2	POV	CASCADE	MT
DIVIDE COMPLEX	08/02/2021	O-4	DELASANTOS, BRIAN W	TFLD	AOV	CENTENNIAL	CO
AMERICAN FORK	08/02/2021	O-62	LAWOR, JASON RICHARD	PIOF	AR	TALAHASSEE	FL

IF YOU ARE FLYING YOU MUST CONTACT DEMOB AT LEAST 3 DAYS BEFORE YOUR DEMOB DATE TO GET A FLIGHT.

On your demob day, or last work day, personnel should:

1. Turn in all supplies, radios and computer equipment checked out from the incident.
2. They should ensure that all Unit Logs and evaluations are submitted to Documentation electronically. 2021.americanfork.docs@firenet.gov
3. Go to the Ground Support Unit for equipment inspections.
4. Go through weed wash and obtain a receipt to verify that the equipment has been cleaned. Return that receipt to demob (this can be done virtually if necessary by emailing a picture of the receipt to: 2021.americanfork.demob@firenet.gov).
5. Go to the Time Unit to complete time and review their final OF-288 or OF-286. This may be done virtually if necessary.
6. Report back to the Demobilization Unit to verify travel information home, including ETD/ETA and RON locations. This can be done virtually if necessary.

Call Jeff DeMatteis, DMOB at 937-506-6181 if you have questions.

Email: 2021.americanfork.demob@firenet.gov

Documentation Documentation Documentation

Don't forget to submit your documentation to Plans!

For those in the field you can scan or take a picture and email it to the plans section - American Fork at 2021.americanfork.docs@firenet.gov or Divide at 2021.divide.docs@firenet.gov

For those with access to America Fork or Divide Teams submit your documents in the correct General Channel>Files>DOCUMENT Inbox

**Make sure you use the NEW Electronic File Naming Convention.
File Naming Convention Format**

Standard for all Section/Unit files

{DocType}_{DocVersion}_{Date}_{IncidentNumber}

EXAMPLE – 214_BearSmokey_20210727_005087

File Naming Components

DocType is the title of the document or the ICS form number

(examples: Public Meeting Events; 296).

DocVersion identifies individual files with the same doc type and date or a file that necessitates a name ID.

Not all electronic files will need a DocVersion

(examples: Resource Name; Aircraft Tail number; Resource Order number; Time).

Date is entered as YYYYMMDD – Y=year; M=month; D=day

(example: 20210704 represents the date July 4, 2021).

IncidentNumber is the six-digit incident number 000NNN – N=numeral

(example: 000363 represents the incident number RM-SJF-000363).

Divide Complex American Fork Fires IAP Map

MT-HLF-5079
MT-HLF-5087

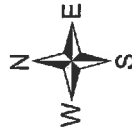
Approx. 19,036 GIS acres 7/26 @ 2115
Operational Shift:
7/29/2021



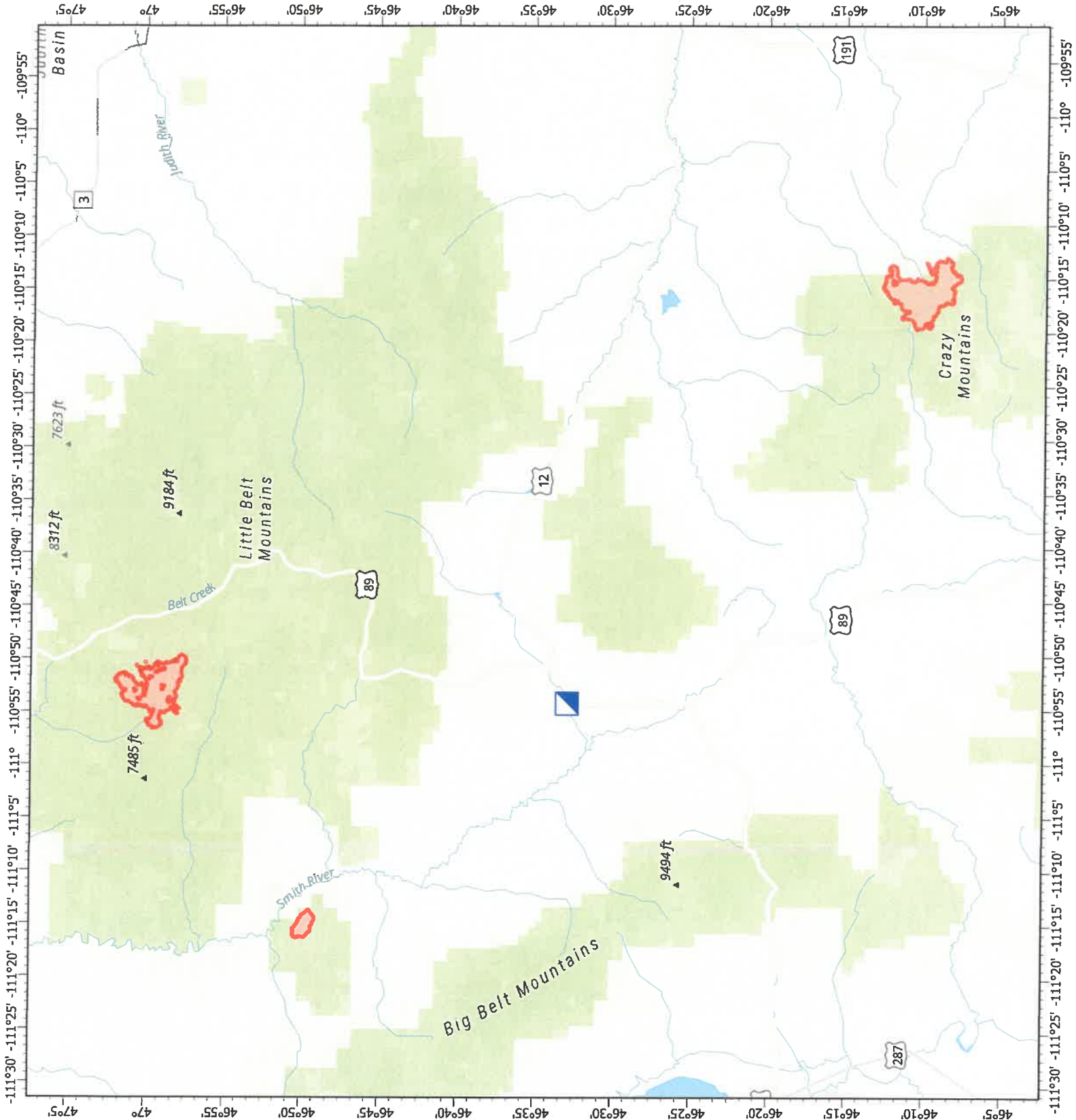
Incident Command Post



Wildfire Daily Fire Perimeter



Created by: SA Gold Team
Date Exported: 7/28/2021 5:38 PM



MEDICAL PLAN (ICS 206 WF)

Controlled Unclassified Information//Basic

Medical Incident Report

FOR A NON-EMERGENCY INCIDENT, WORK THROUGH CHAIN OF COMMAND TO REPORT AND TRANSPORT INJURED PERSONNEL AS NECESSARY.

FOR A MEDICAL EMERGENCY: IDENTIFY ON SCENE INCIDENT COMMANDER BY NAME AND POSITION AND ANNOUNCE "MEDICAL EMERGENCY" TO INITIATE RESPONSE FROM IMT COMMUNICATIONS/DISPATCH.

Use the following items to communicate situation to communications/dispatch.

1. CONTACT COMMUNICATIONS / DISPATCH (Verify correct frequency prior to starting report)

Ex: "Communications, Div. Alpha. Stand-by for Emergency Traffic."

2. INCIDENT STATUS: Provide incident summary (including number of patients) and command structure.

Ex: "Communications, I have a Red priority patient, unconscious, struck by a falling tree. Requesting air ambulance to Forest Road 1 at (Lat./Long.) This will be the Trout Meadow Medical, IC is TFLD Jones. EMT Smith is providing medical care."

Severity of Emergency / Transport Priority	<input type="checkbox"/> RED / PRIORITY 1 Life or limb threatening injury or illness. Evacuation need is IMMEDIATE Ex: Unconscious, difficulty breathing, bleeding severely, 2° – 3° burns more than 4 palm sizes, heat stroke, disoriented.
	<input type="checkbox"/> YELLOW / PRIORITY 2 Serious Injury or illness. Evacuation may be DELAYED if necessary. Ex: Significant trauma, unable to walk, 2° – 3° burns not more than 1-3 palm sizes.
	<input type="checkbox"/> GREEN / PRIORITY 3 Minor Injury or illness. Non-Emergency transport Ex: Sprains, strains, minor heat-related illness.
Nature of Injury or Illness & Mechanism of Injury	Brief Summary of Injury or Illness (Ex: Unconscious, Struck by Falling Tree)
Transport Request	Air Ambulance / Short Haul/Hoist Ground Ambulance / Other
Patient Location	Descriptive Location & Lat. / Long. (WGS84)
Incident Name	Geographic Name + "Medical" (Ex: Trout Meadow Medical)
On-Scene Incident Commander	Name of on-scene IC of Incident within an Incident (Ex: TFLD Jones)
Patient Care	Name of Care Provider (Ex: EMT Smith)

3. INITIAL PATIENT ASSESSMENT: Complete this section for each patient as applicable (start with the most severe patient)

Patient Assessment: See IRPG page 106

Treatment:

4. TRANSPORT PLAN:

Evacuation Location (if different): (Descriptive Location (drop point, intersection, etc.) or Lat. / Long.) Patient's ETA to Evacuation Location:

Helispot / Extraction Site Size and Hazards:

5. ADDITIONAL RESOURCES / EQUIPMENT NEEDS:

Example: Paramedic/EMT, Crews, Immobilization Devices, AED, Oxygen, Trauma Bag, IV/Fluid(s), Splints, Rope rescue, Wheeled litter, HAZMAT, Extrication

6. COMMUNICATIONS: Identify State Air/Ground EMS Frequencies and Hospital Contacts as applicable

Function	Channel Name/Number	Receive (RX)	Tone/NAC *	Transmit (TX)	Tone/NAC *
COMMAND					
AIR-TO-GRND					
TACTICAL					

7. CONTINGENCY: Considerations: If primary options fail, what actions can be implemented in conjunction with primary evacuation method? Be thinking ahead.

8. ADDITIONAL INFORMATION: Updates/Changes, etc.

REMEMBER: Confirm ETA's of resources ordered. Act according to your level of training. Be Alert. Keep Calm. Think Clearly. Act Decisively.