

110°58'0"W

110°56'0"W

110°54'0"W

110°52'0"W

110°50'0"W

110°48'0"W

47°20'N

47°20'N

47°00'N

47°00'N

46°58'0"N

46°58'0"N

110°58'0"W

110°56'0"W

110°54'0"W

110°52'0"W

110°50'0"W

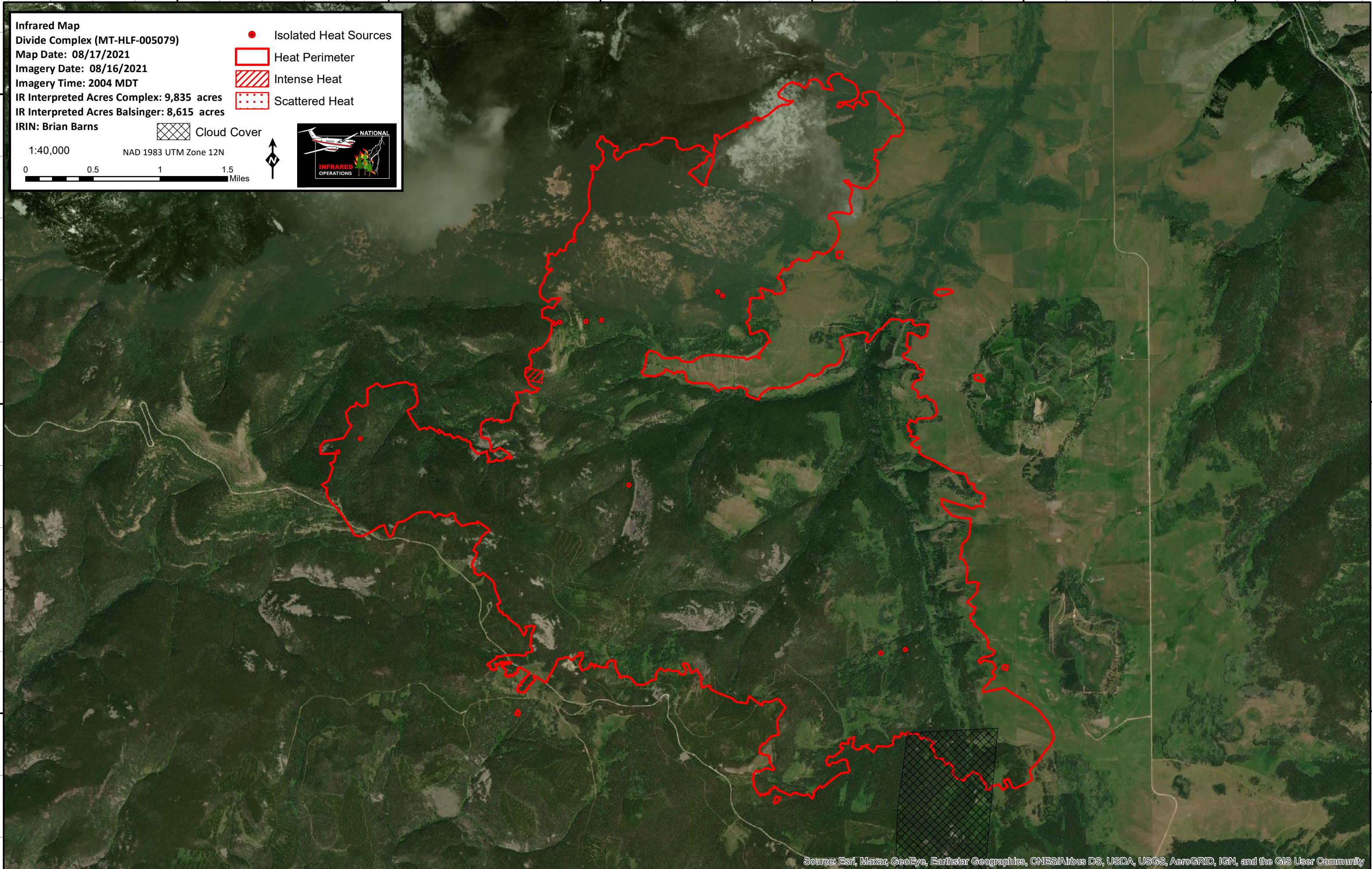
110°48'0"W

Infrared Map
 Divide Complex (MT-HLF-005079)
 Map Date: 08/17/2021
 Imagery Date: 08/16/2021
 Imagery Time: 2004 MDT
 IR Interpreted Acres Complex: 9,835 acres
 IR Interpreted Acres Balsinger: 8,615 acres
 IRIN: Brian Barns

- Isolated Heat Sources
- Heat Perimeter
- Intense Heat
- Scattered Heat

Cloud Cover

1:40,000
 NAD 1983 UTM Zone 12N
 0 0.5 1 1.5 Miles



Source: Esri, Maxar, GeoEye, Earthstar Geographics, CNES/Airbus DS, USDA, USGS, AeroGRID, IGN, and the GIS User Community