

Balsinger Fire

Operations Topo Map

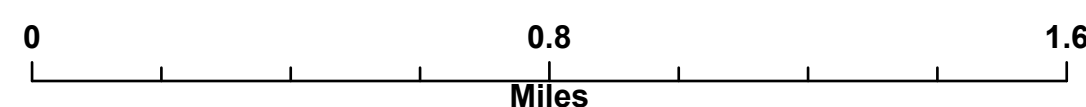
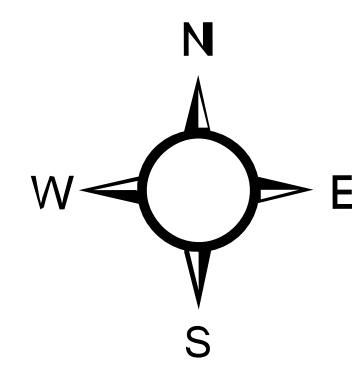
MT-HLF-5079

Approx. 8,185 GIS Acres
@ 7/26 2125

Operational Shift:
7/27/201

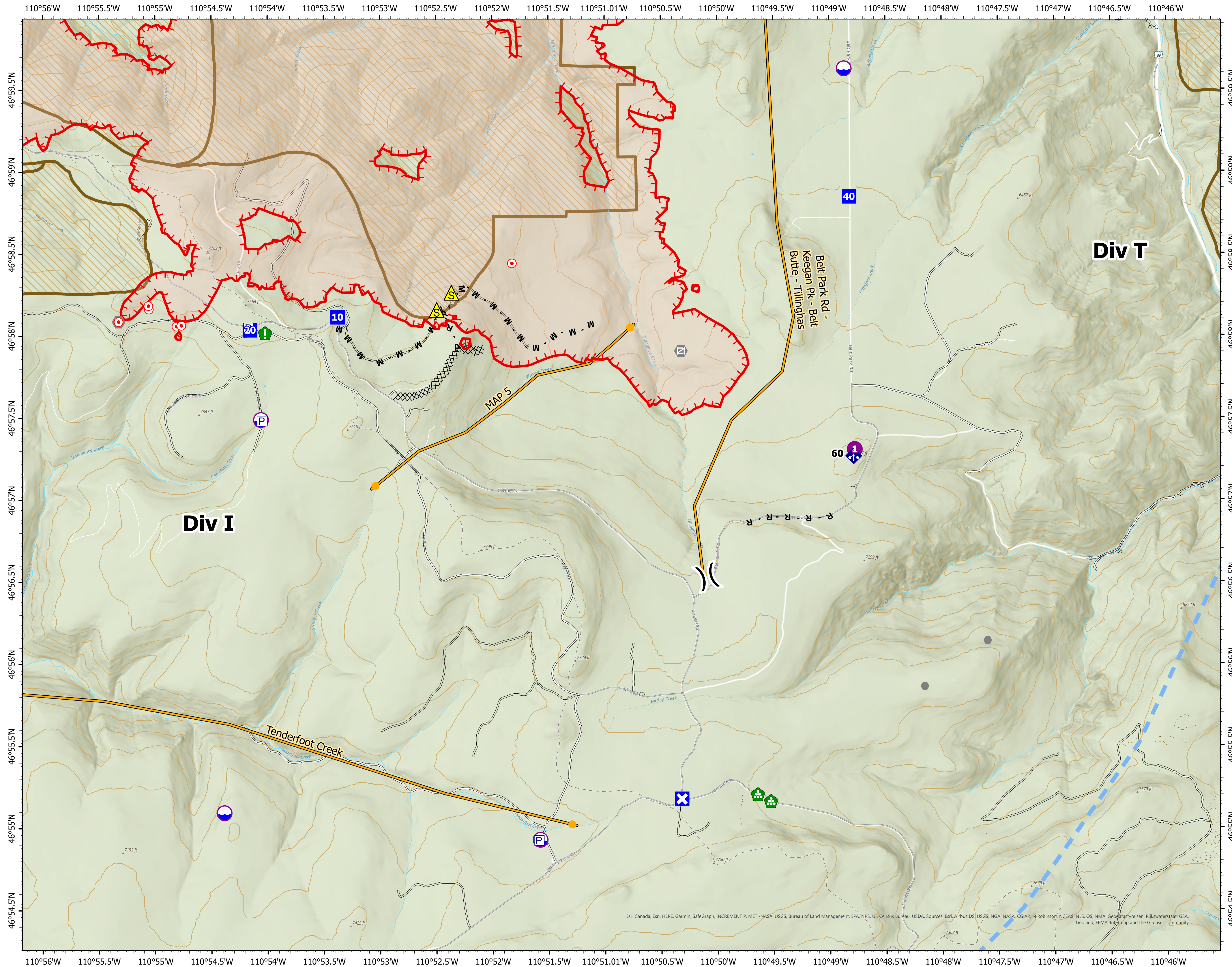


- Pump
- Dip Site
- Helipod
- Division Break
- Drop Point
- Closure
- Hot Spot - Spot Fire
- Other
- Gate
- Resource Location
- Landing or Log Deck
- Mobile Weather Unit
- Safety Zone
- Water Source
- Completed Dozer Line
- Completed Mixed Construction Line
- Completed Road as Line
- Planned Road as Line
- Management Action Point
- Temporary Flight Restriction
- Fire Edge
- Summit
- NHD Flowline
- Contour 200ft
- High Clearance Road
- Road
- USFS Roads Decommissioned
- Wildfire Daily Fire Perimeter
- NHD Waterbody
- Inventoried Roadless Area



Created by: SA Gold Team
Date Exported: 7/27/2021 1002

North American 1983 Datum. LatLong Grid



Esri, Canada, Esri, HERE, Garmin, SafeGraph, INCREMENT P, METI/NASA, USGS, Bureau of Land Management, EPA, NPS, US Census Bureau, USDA, Sources: Esri, Airbus DS, USGS, NGA, NASA, CGIAR, N Robinson, NCEAS, NLS, OS, NMA, Geodatasystemen, Rijkswaterstaat, GSA, Geoland, FEMA, Intermap and the GIS user community