

Balsinger Fire

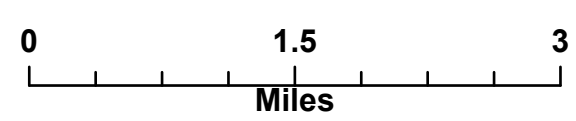
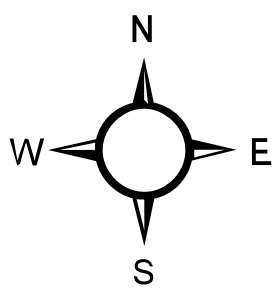
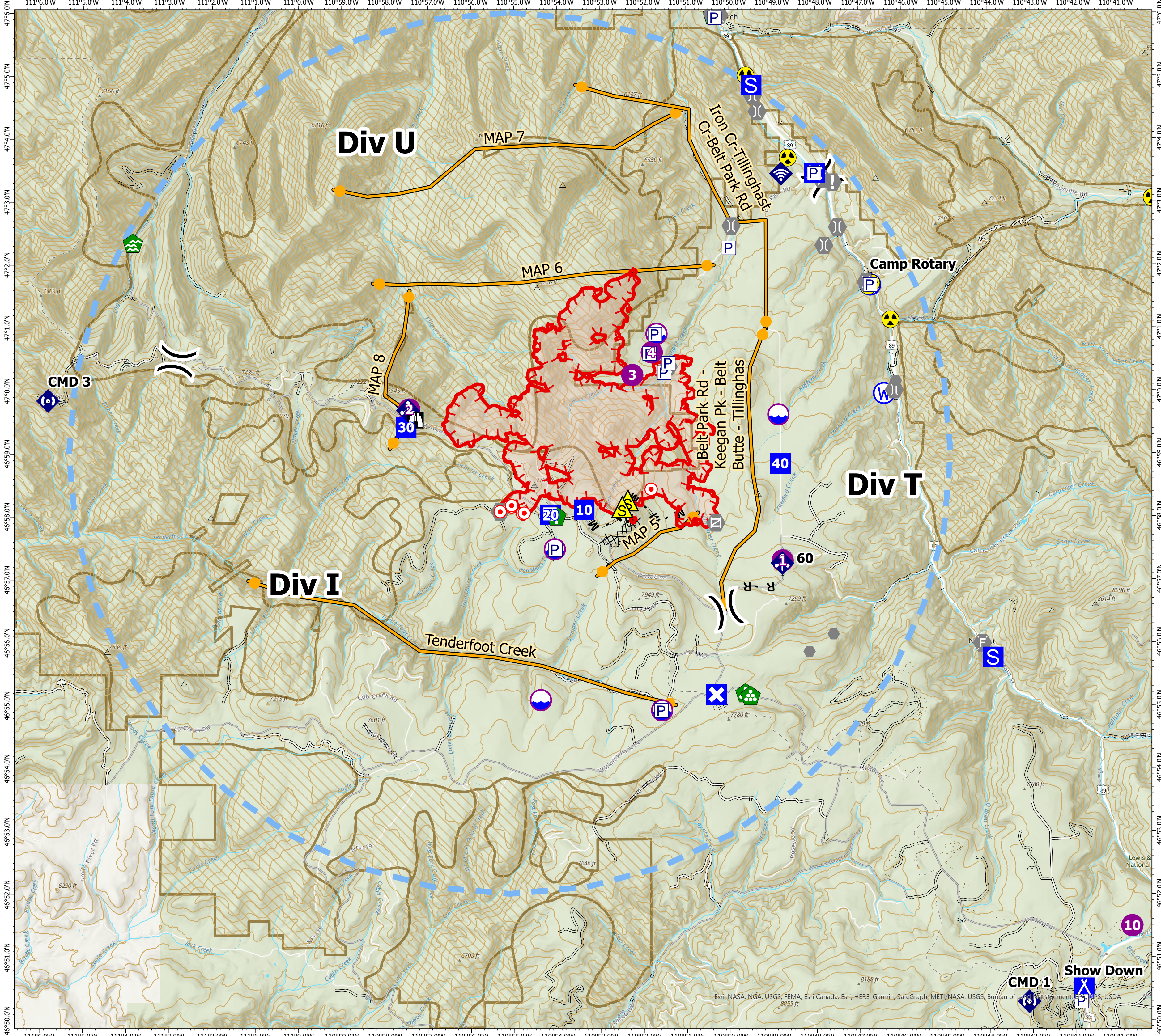
Operations Topo Map

MT-HLF-5079

Approx. 6,722 GIS Acres
 @ 7/25 2155
 Operational Shift:
 7/27/2021



- Pump
- Dip Site
- Helispot
- Division Break
- Drop Point
- Closure
- Camp
- Staging Area
- Lookout
- Hot Spot - Spot Fire
- Value at Risk
- Other
- Gate
- Fire Station
- Bridge
- Water Development or Draft Site
- Stream Crossing
- Resource Location
- Landing or Log Deck
- Mobile Weather Unit
- Internet Access
- Repeater
- Safety Zone
- Hazard
- Water Source
- Summit
- Completed Dozer Line
- Completed Mixed Construction Line
- Completed Road as Line
- Planned Road as Line
- Management Action Point
- Temporary Flight Restriction
- Fire Edge
- Contour 200ft
- NHD Flowline
- USFS Roads
- Decommissioned
- High Clearance Road
- Road
- Wildfire Daily Fire Perimeter
- Inventoried Roadless Area
- NHD Waterbody



Created by: SA Gold Team
 Date Exported: 7/26/2021 2217

North American 1983 Datum, Lat/Long Grid

CMD 1 **Show Down**

Esri, NASA, NGA, USGS, FEMA, Esri Canada, Esri, HERE, Garmin, SafeGraph, METI/NASA, USGS, Bureau of Land Management, USFS, USDA