

Balsinger Fire

AirOps w/IR Topo Map

MT-HLF-5079

Approx. 8,473 GIS Acres

7/30/21 @ 1400

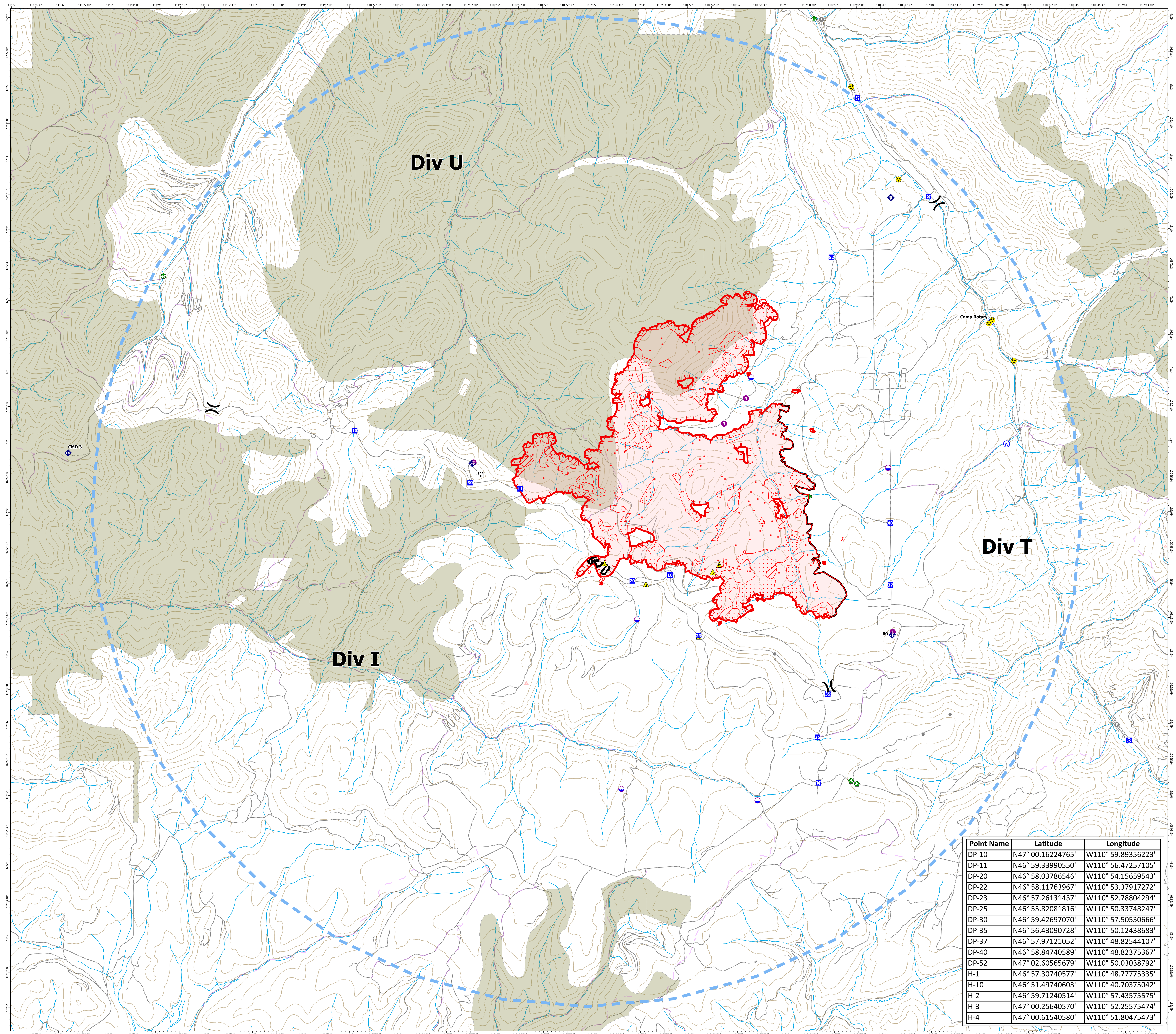
Operational Shift:
7/31/21



IR Acres 8,511 @ 07/30/31 2315 MDT

- IR Isolated Heat Source
- ▭ IR Intense Heat
- ▭ IR Scattered Heat
- ▭ IR Heat Perimeter

- Dip Site
- Helispot
-) (Division Break
- Drop Point
- ▣ Closure
- ▣ Staging Area
- ▣ Lookout
- Hot Spot - Spot Fire
- Other
- Fire Station
- Water Development or Draft Site
- Stream Crossing
- Landing or Log Deck
- ◆ Mobile Weather Unit
- ◆ Internet Access
- ◆ Repeater
- ▲ Safety Zone
- Hazard
- ⊙ Water Source
- Temporary Flight Restriction
- Fire Edge
- Contained Line
- ▭ Wildfire Daily Fire Perimeter
- 200ft Contour
- Trails
- Trails
- ▭ Inventoried Roadless Area
- Transportation
- Stream



Point Name	Latitude	Longitude
DP-10	N47° 00.16224765'	W110° 59.89356223'
DP-11	N46° 59.33990550'	W110° 56.47257105'
DP-20	N46° 58.03786546'	W110° 54.15659543'
DP-22	N46° 58.11763967'	W110° 53.37917272'
DP-23	N46° 57.26131437'	W110° 52.78804294'
DP-25	N46° 55.82081816'	W110° 50.33748247'
DP-30	N46° 59.42697070'	W110° 57.50530666'
DP-35	N46° 56.43090728'	W110° 50.12438683'
DP-37	N46° 57.97121052'	W110° 48.82544107'
DP-40	N46° 58.84740589'	W110° 48.82375367'
DP-52	N47° 02.60565679'	W110° 50.03038792'
H-1	N46° 57.30740577'	W110° 48.77775335'
H-10	N46° 51.49740603'	W110° 40.70375042'
H-2	N46° 59.71240514'	W110° 57.43575575'
H-3	N47° 00.25640570'	W110° 52.25575474'
H-4	N47° 00.61540580'	W110° 51.80475473'

