

Ellis Fire

Operations Map

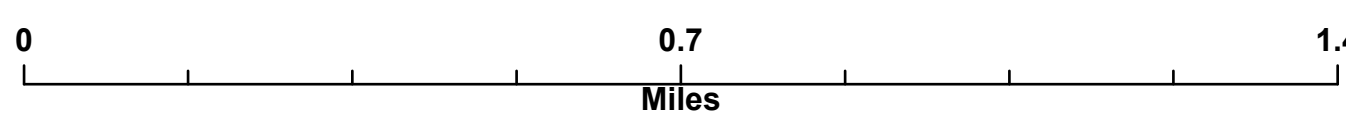
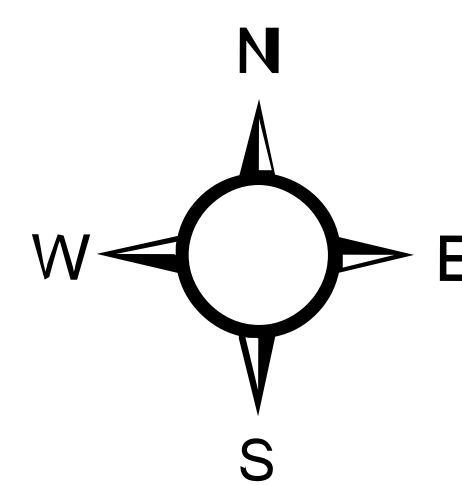
MT-HLF-5079

Approx. 1,227 GIS Acres
@ 7/30 2250

Operational Shift:
8/3/2021

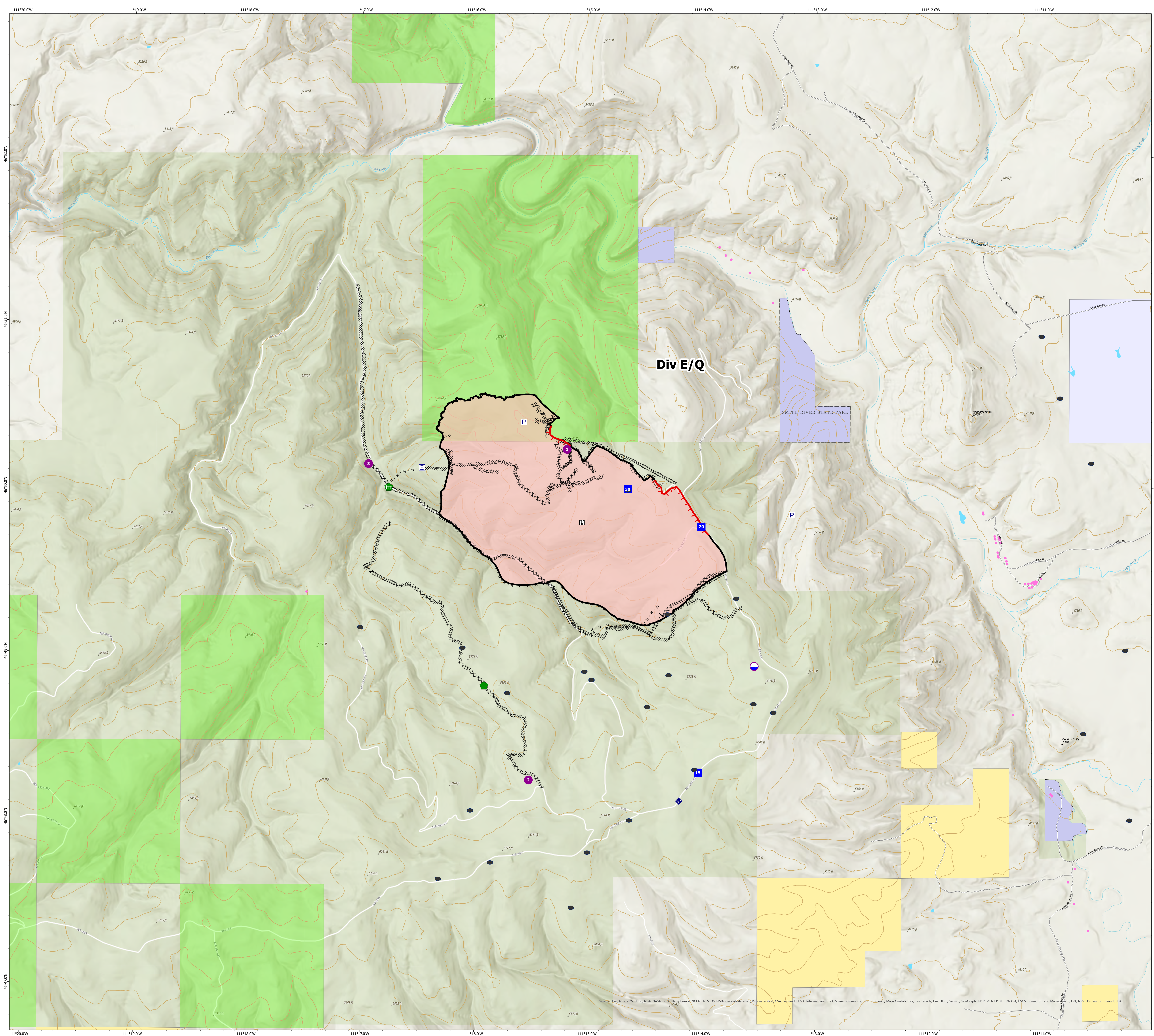


- RCCs Stock Tanks
- Ⓟ Pump
- Ⓜ Water Tank
- Ⓛ Dip Site
- Ⓢ Helispot
- Ⓛ Drop Point
- Ⓛ Lookout
- Ⓛ Repair Point
- Ⓛ Fence - Cut/Damaged
- Ⓛ Internet Access
- Ⓛ Structure - State Data
- Ⓛ Completed Dozer Line
- Ⓛ Completed Hand Line
- Ⓛ Other
- Ⓛ Fire Edge
- Ⓛ Contained Line
- Ⓛ Wildfire Daily Fire Perimeter
- Ⓛ NHD Flowline
- Ⓛ NHD Waterbody
- Ⓛ Dirt (Not Paved)
- Ⓛ County Boundary
- Ⓛ Helena-Lewis and Clark National Forest
- Ⓛ State Public Lands
- Ⓛ Other State Lands
- Ⓛ Bureau of Land Management Lands



Created by: SA Red Team
Date Exported: 8/2/2021 2043

North American 1983 Datum, Lat,Long Grid



Source: Esri, Airbus DS, USGS, NASA, NOAA, CNES, NLS, OS, NMA, Geostationary, Planet, Sentinel, GSA, ClearQuest, FEMA, Intermap and the GIS user community, Esri Community Map Contributors, Esri Canada, Esri, HERE, Garmin, SwireGraph, INCREMENT P, METI/NASA, USGS, Bureau of Land Management, EPA, NPS, US Census Bureau, USDA