

Balsinger Fire

MAP Operations Map

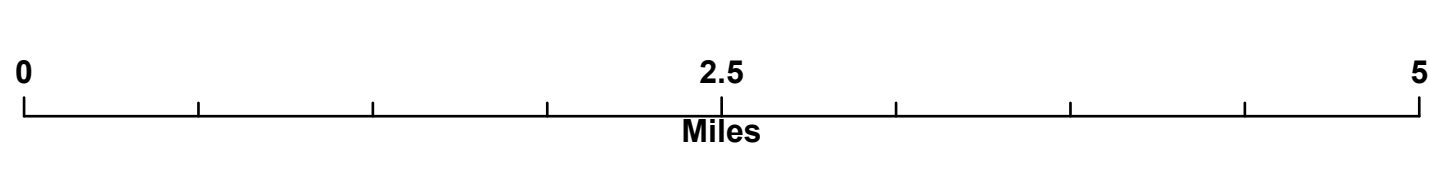
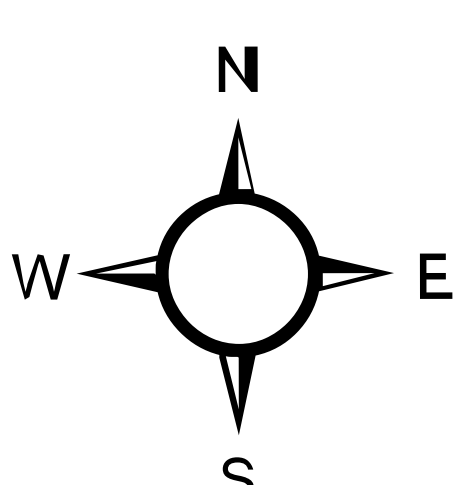
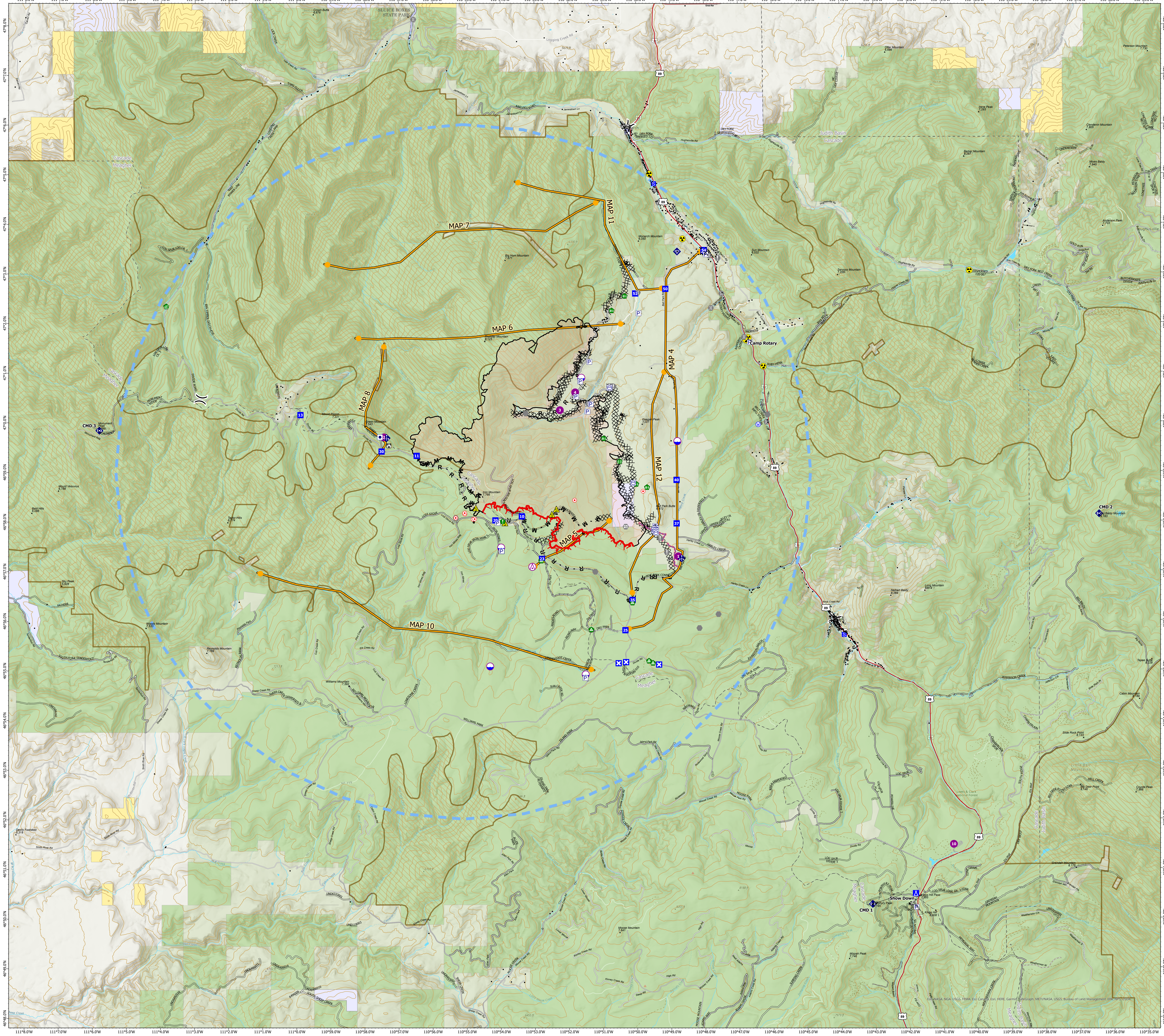
MT-HLF-5079

Approx. 8,511 GIS Acres @ 7/30 2315

Operational Shift:
8/4/2021



- Structure - State Data
- Other Property
- Pump
- Water Tank
- Aerial Hazard
- Dip Site
- Helispot
- Division Break
- Drop Point
- Closure
- Camp
- Staging Area
- Lookout
- Hot Spot - Spot Fire
- Value at Risk
- Other
- Gate
- Fire Station
- Bridge
- Water Development or Draft Site
- Stream Crossing
- Resource Location
- Landing or Log Deck
- Fence - Cut/Damaged
- Mobile Weather Unit
- Internet Access
- Repeater
- Safety Zone
- Hazard
- Water Source
- Completed Dozer Line
- Completed Fuel Break
- Completed Hand Line
- Completed Mixed Construction Line
- Completed Road as Line
- Planned Road as Line
- Planned Secondary Line
- Access or Improved Road
- Management Action Point
- Other
- Retardant Drop
- Temporary Flight Restriction
- Fire Edge
- Contained Line
- Wildfire Daily Fire Perimeter
- Inventoried Roadless Area
- USFS Roads Decommissioned
- High Clearance Road
- Road
- Primary Highway
- Secondary Highway
- Paved Roads
- Dirt (Not Paved)
- County Boundary
- Holena-Lewis and Clark National Forest
- State Public Lands
- Other State Lands
- Bureau of Land Management Lands



Created by: SA Red Team
Date Exported: 8/3/2021 1846

North American 1983 Datum, Lat,Long Grid