

Balsinger Fire Operations Map

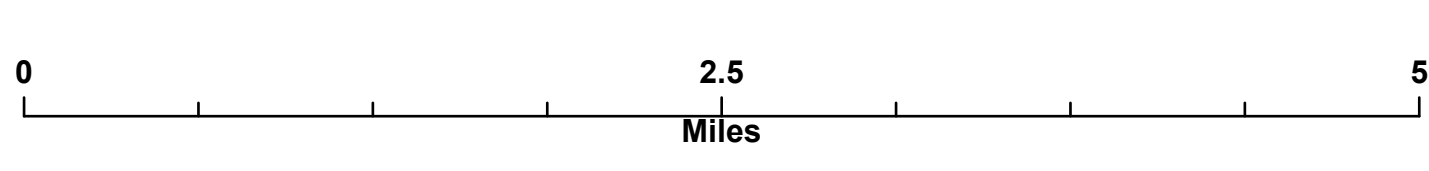
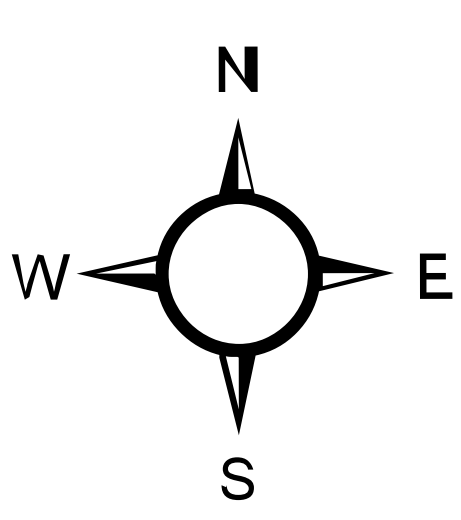
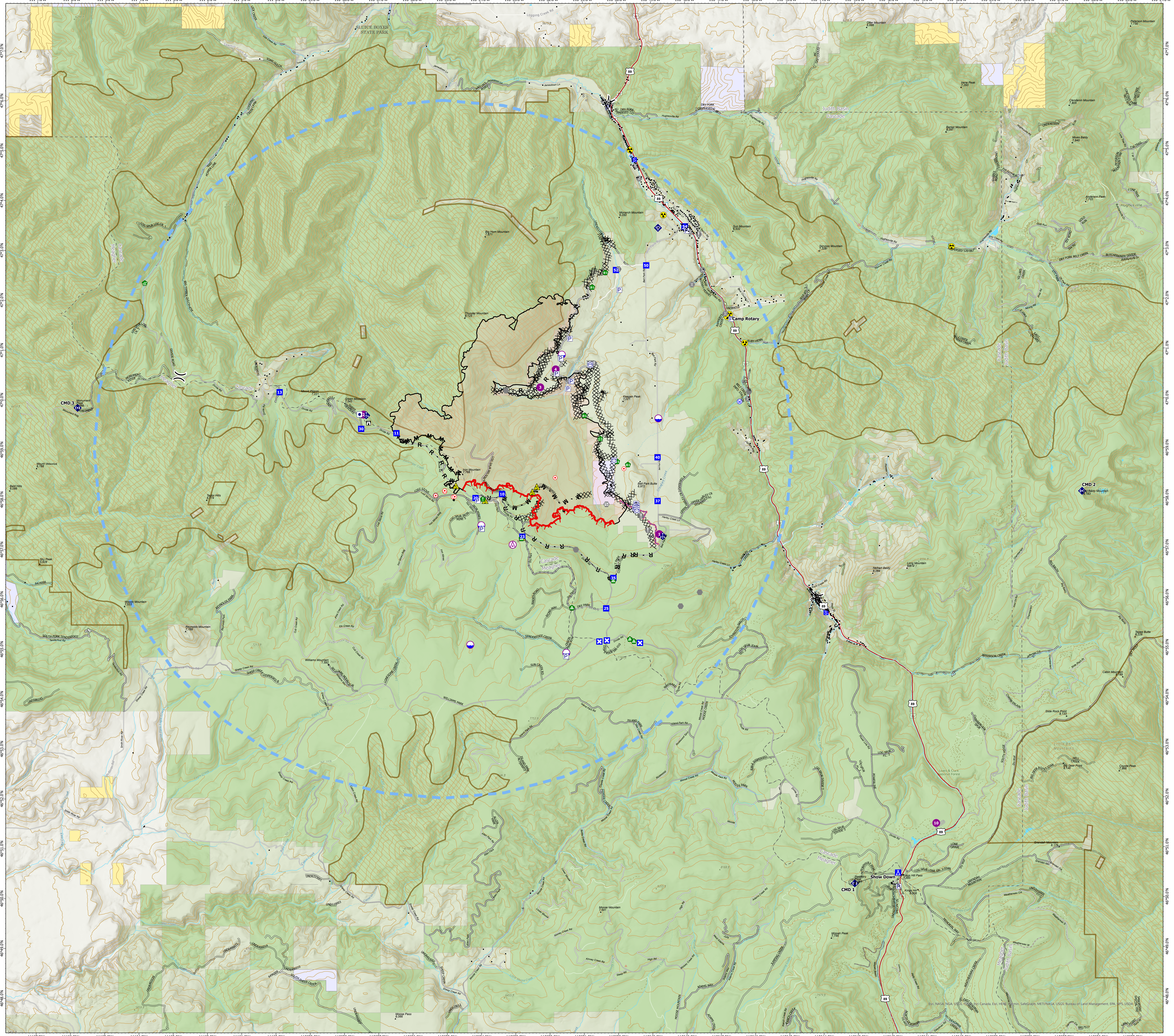
MT-HLF-5079

Approx. 8,511 GIS Acres @ 7/30 2315

Operational Shift:
8/4/2021



- Structure- State Data
- ▣ Other Property
- Ⓟ Pump
- Ⓜ Water Tank
- Ⓜ Aerial Hazard
- Ⓜ Dip Site
- Ⓜ Helispot
- Ⓜ Division Break
- Ⓜ Drop Point
- Ⓜ Closure
- Ⓜ Camp
- Ⓜ Staging Area
- Ⓜ Lookout
- Ⓜ Hot Spot - Spot Fire
- Ⓜ Value at Risk
- Ⓜ Other
- Ⓜ Gate
- Ⓜ Fire Station
- Ⓜ Bridge
- Ⓜ Water Development or Draft Site
- Ⓜ Stream Crossing
- Ⓜ Resource Location
- Ⓜ Landing or Log Deck
- Ⓜ Fence - Cut/Damaged
- Ⓜ Mobile Weather Unit
- Ⓜ Internet Access
- Ⓜ Repeater
- Ⓜ Safety Zone
- Ⓜ Hazard
- Ⓜ Water Source
- Ⓜ Completed Dozer Line
- Ⓜ Completed Fuel Break
- Ⓜ Completed Hand Line
- Ⓜ Completed Mixed Construction Line
- Ⓜ Completed Road as Line
- Ⓜ Planned Road as Line
- Ⓜ Planned Secondary Line
- Ⓜ Access or Improved Road
- Ⓜ Other
- Ⓜ Retardant Drop
- Ⓜ Temporary Flight Restriction
- Ⓜ Fire Edge
- Ⓜ Contained Line
- Ⓜ Wildfire Daily Fire Perimeter
- Ⓜ Inventoried Roadless Area
- Ⓜ NHD Flowline
- Ⓜ NHD Waterbody
- Ⓜ USFS Roads Decommissioned
- Ⓜ High Clearance Road
- Ⓜ Road
- Ⓜ Primary Highway
- Ⓜ Paved Roads
- Ⓜ Dirt (Not Paved)
- Ⓜ County Boundary
- Ⓜ Helena-Lewis and Clark National Forest
- Ⓜ State Public Lands
- Ⓜ Other State Lands
- Ⓜ Bureau of Land Management Lands



Created by: SA Red Team
Date Exported: 8/3/2021 1832

North American 1983 Datum, Lat/Long Grid