

# Ellis Fire

## Operations IR Map

### MT-HLF-5079

Approx. 1,227 GIS Acres  
@ 7/30 2250

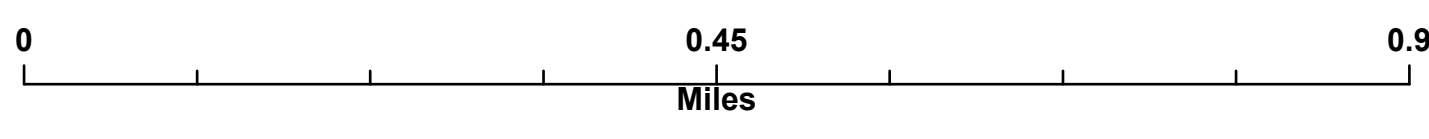
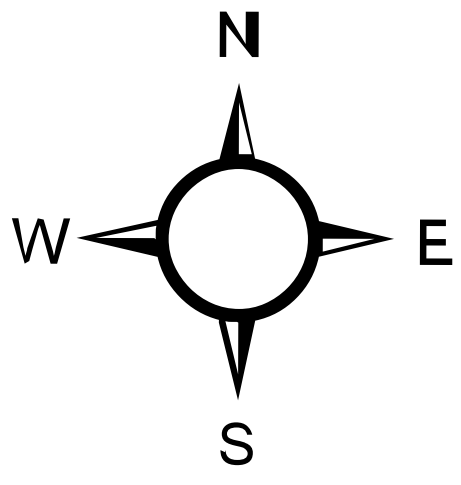
Operational Shift:  
8/4/2021



- RCCS Stock Tanks
- Ⓟ Pump
- Ⓜ Water Tank
- Ⓛ Dip Site
- Helispot
- Ⓛ Drop Point
- Ⓛ Lookout
- Ⓛ Repair Point
- Ⓛ Fence - Cut/Damaged
- Ⓛ Internet Access
- Ⓛ Structure- State Data
- Ⓛ Completed Dozer Line
- Ⓛ Completed Hand Line
- Ⓛ Other
- Ⓛ Fire Edge
- Ⓛ Contained Line
- Ⓛ Wildfire Daily Fire Perimeter
- Ⓛ Inventoried Roadless Area
- Ⓛ USFS Roads Decommissioned
- Ⓛ High Clearance Road
- Ⓛ Road
- Ⓛ Other Road
- Ⓛ Primary Highway
- Ⓛ Secondary Highway
- Ⓛ Paved Roads
- Ⓛ Dirt (Not Paved)
- Ⓛ Interstate Not Paved
- Ⓛ US Route Not Paved
- Ⓛ County Boundary
- Ⓛ Helena-Lewis and Clark National Forest
- Ⓛ State Public Lands
- Ⓛ Bureau of Land Management Lands

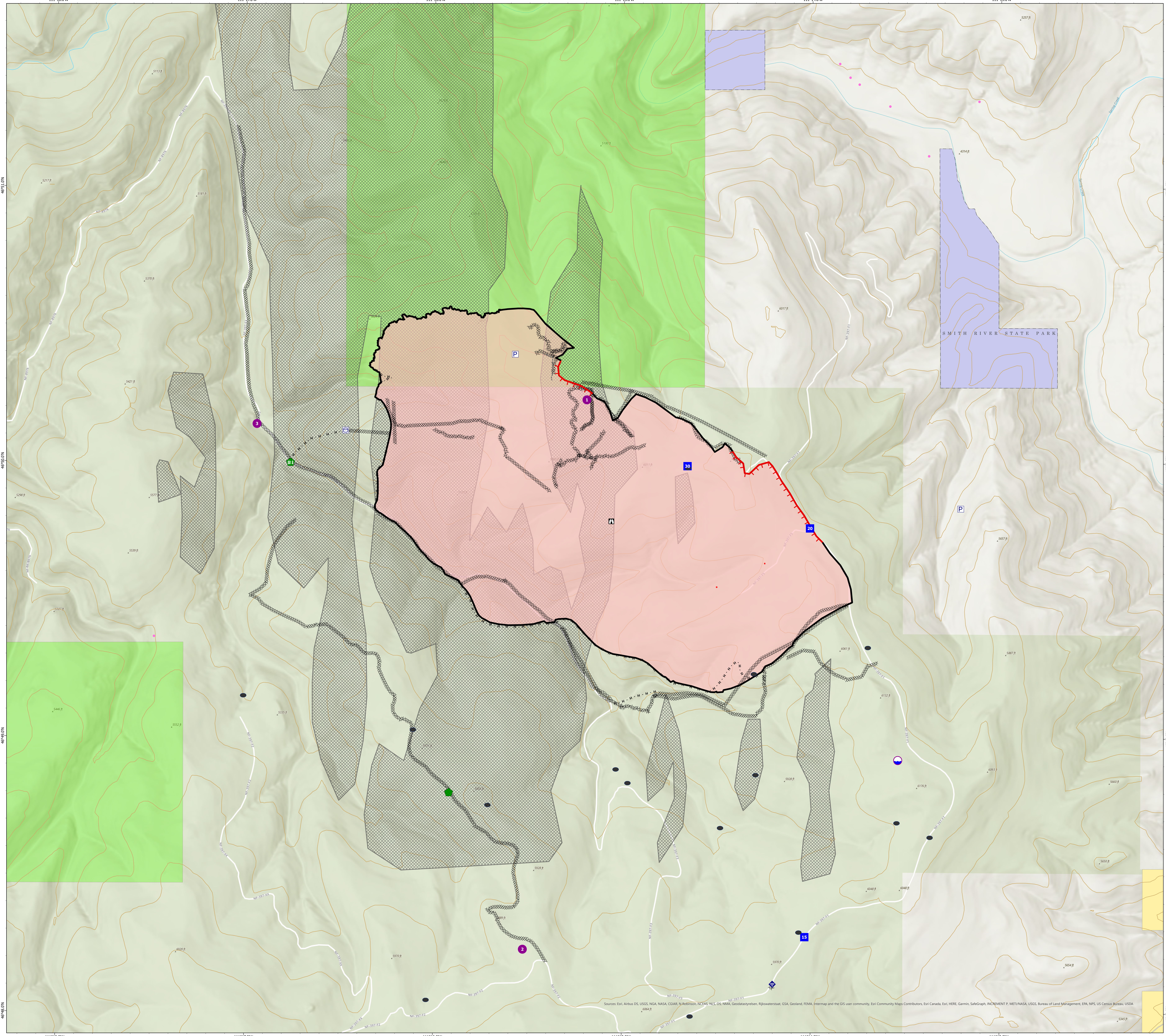
#### IR Data: 1,221 IR Acres @ 8/3 2206

- IR Isolated Heat Source
- Possible IR Heat Source
- Ⓛ Edge of Imagery
- Ⓛ Area Covered by IR Flight
- Ⓛ Cloud Cover
- Ⓛ IR Heat Perimeter
- Ⓛ IR Intense Heat
- Ⓛ IR Scattered Heat



Created by: SA Red Team  
Date Exported: 8/4/2021 0519

North American 1983 Datum, Lat,Long Grid



Sources: Esri, Airbus DS, USGS, NASA, NOAA, CGAAR, NCEAS, NLS, OS, NMA, Geostationary, Rijkswaterstaat, GSA, Geoland, FEMA, Intermap and the GIS user community, Esri Canada, Esri, HERE, Garmin, SafeGraph, INCREMENT P, METI/NASA, USGS, Bureau of Land Management, EPA, NPS, US Census Bureau, USDA