

Balsinger Fire

MAP Operations Map

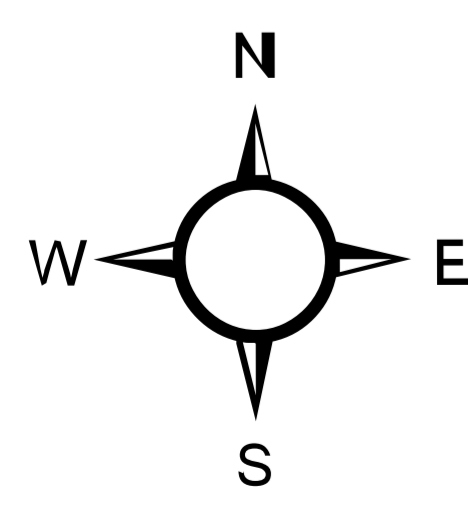
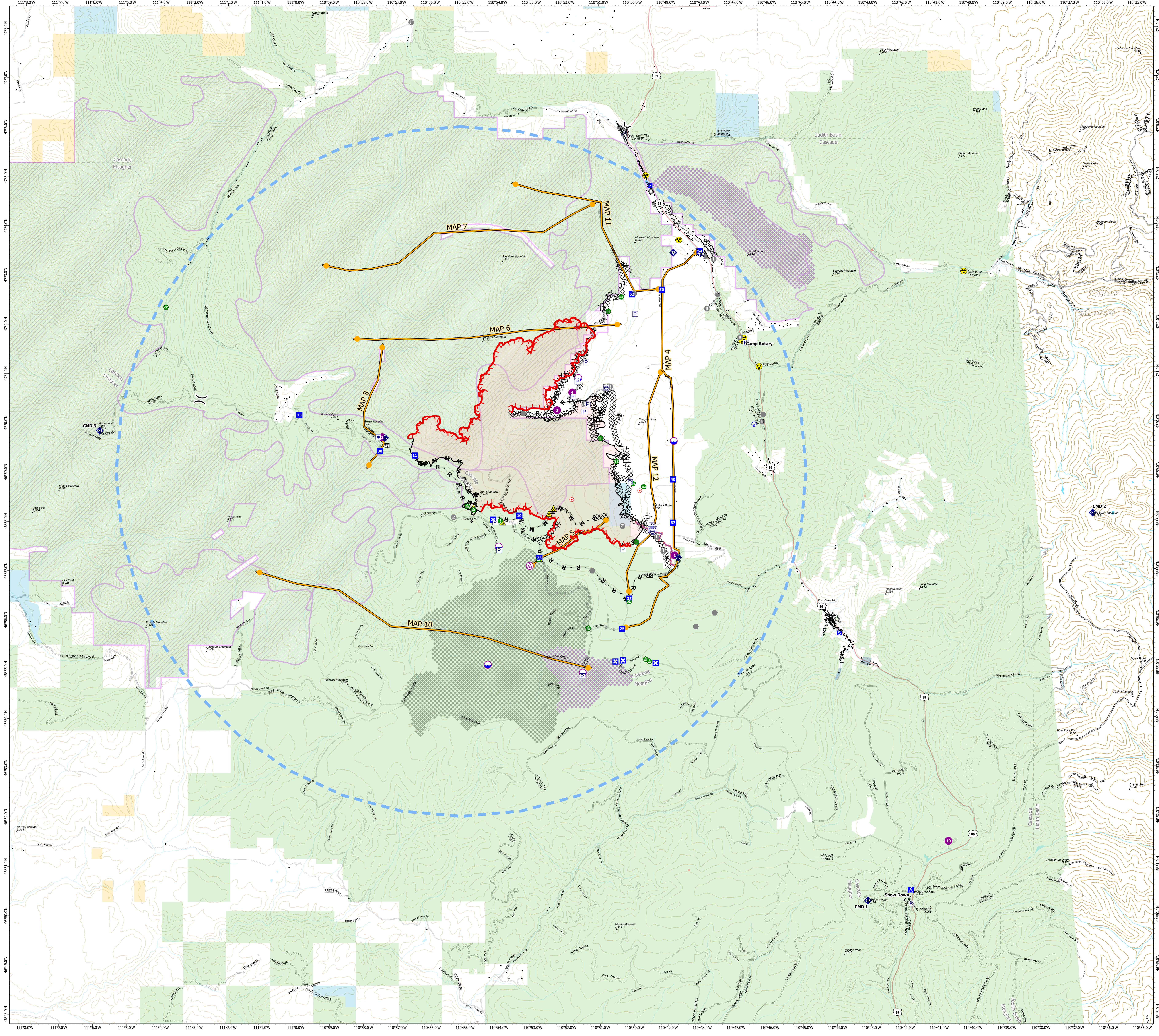
MT-HLF-5079

Approx. 8,603 GIS Acres @ 8/3 2210

Operational Shift:
8/5/2021



- Structure - State Data
 - Other Property
 - P Pump
 - Water Tank
 - Aerial Hazard
 - Dip Site
 - Hellspot
 - Division Break
 - Drop Point
 - Closure
 - Camp
 - Staging Area
 - Lookout
 - Hot Spot - Spot Fire
 - Value at Risk
 - Other
 - Gate
 - Fire Station
 - Bridge
 - Water Development or Draft Site
 - Stream Crossing
 - Resource Location
 - Landing or Log Deck
 - Fence - Cut/Damaged
 - Mobile Weather Unit
 - Internet Access
 - Repeater
 - Safety Zone
 - Hazard
 - Water Source
 - ⊗ Completed Dozer Line
- NW Completed Fuel Break
 - H Completed Hand Line
 - M Completed Mixed Construction Line
 - R Completed Road as Line
 - R Planned Road as Line
 - S Planned Secondary Line
 - Access or Improved Road
 - Management Action Point
 - Retardant Drop
 - Temporary Flight Restriction
 - Fire Edge
 - Contained Line
 - Wildfire Daily Fire Perimeter
 - USFS Roads Decommissioned
 - High Clearance Road
 - Road
 - Primary Highway
 - Secondary Highway
 - Paved Roads
 - Dirt (Not Paved)
 - County Boundary
- Land Ownership**
- Bureau of Indian Affairs (BIA)
 - Bureau of Land Management (BLM)
 - Bureau of Reclamation (BOR)
 - Department of Defense (DOD)
 - Local Government
 - National Park Service (NPS)
 - Other Federal
 - State
 - US Fish and Wildlife Service (USFWS)
 - US Forest Service (USFS)
 - Private
 - Undetermined
 - Inventoried Roadless Areas
 - Tenderfoot Experimental Forest
 - Research Natural Areas



0 0.5 1 2 3 4 Miles

Created by: SA Red Team
Date Exported: 8/4/2021 2051

North American 1983 Datum, Lat/Long Grid