

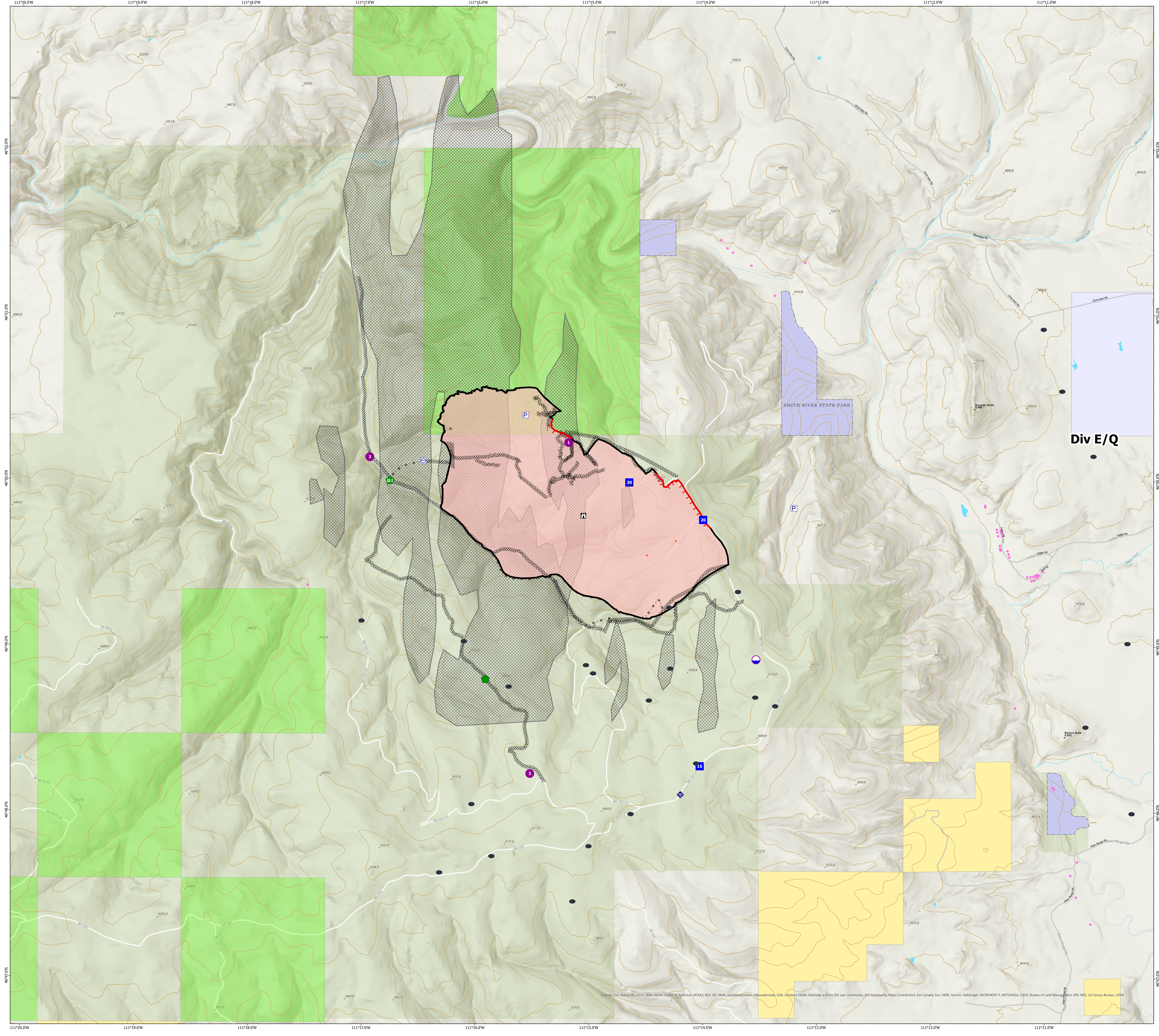
Ellis Fire

Operations Map

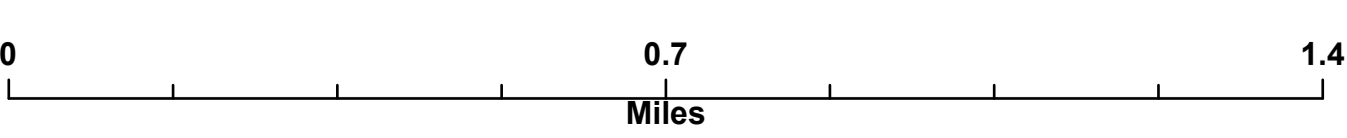
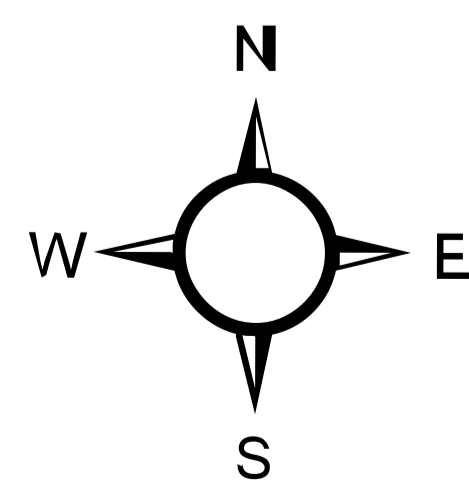
MT-HLF-5079

Approx. 1,227 GIS Acres
@ 7/30 2250

Operational Shift:
8/5/2021



- RCCs Stock Tanks
- Ⓟ Pump
- Ⓜ Water Tank
- Ⓛ Dip Site
- Ⓢ Helispot
- Ⓛ Drop Point
- Ⓛ Lookout
- Ⓛ Repair Point
- Ⓛ Fence - Cut/Damaged
- Ⓛ Internet Access
- Ⓛ Structure- State Data
- Ⓛ Completed Dozer Line
- Ⓛ Completed Hand Line
- Ⓛ Other
- Ⓛ Fire Edge
- Ⓛ Contained Line
- Ⓛ Wildfire Daily Fire Perimeter
- Ⓛ Dirt (Not Paved)
- Ⓛ CountyBoundary
- Ⓛ Helena-Lewis and Clark National Forest
- Ⓛ State Public Lands
- Ⓛ Other State Lands
- Ⓛ Bureau of Land Management Lands
- IR Point
 - IR Isolated Heat Source
 - Possible IR Heat Source
 - Ⓛ Edge of Imagery
- IR Polygon
 - Ⓛ Area Covered by IR Flight
 - Ⓛ Cloud Cover
 - Ⓛ IR Heat Perimeter
 - Ⓛ IR Intense Heat
 - Ⓛ IR Scattered Heat



Created by: SA Red Team
Date Exported: 8/4/2021 2204

North American 1983 Datum, Lat/Long Grid

Div E/Q

Source: Esri, Airbus DS, USGS, NOAA, NASA, CGA, B, Robinson, NCEAS, NLS, OS, NMA, Geospatial, Esri, FEMA, Intermop and the GIS user community, Esri Community Maps Contributors, Esri, HERE, Garmin, SwireGraph, INCREMENT P, METI/NASA, USGS, Bureau of Land Management, EPA, NPS, US Census Bureau, USDA