

Balsinger Fire MAP Operations Map

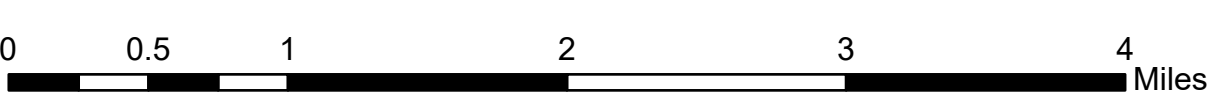
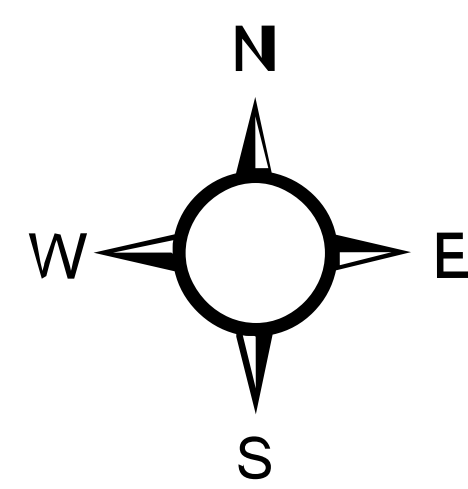
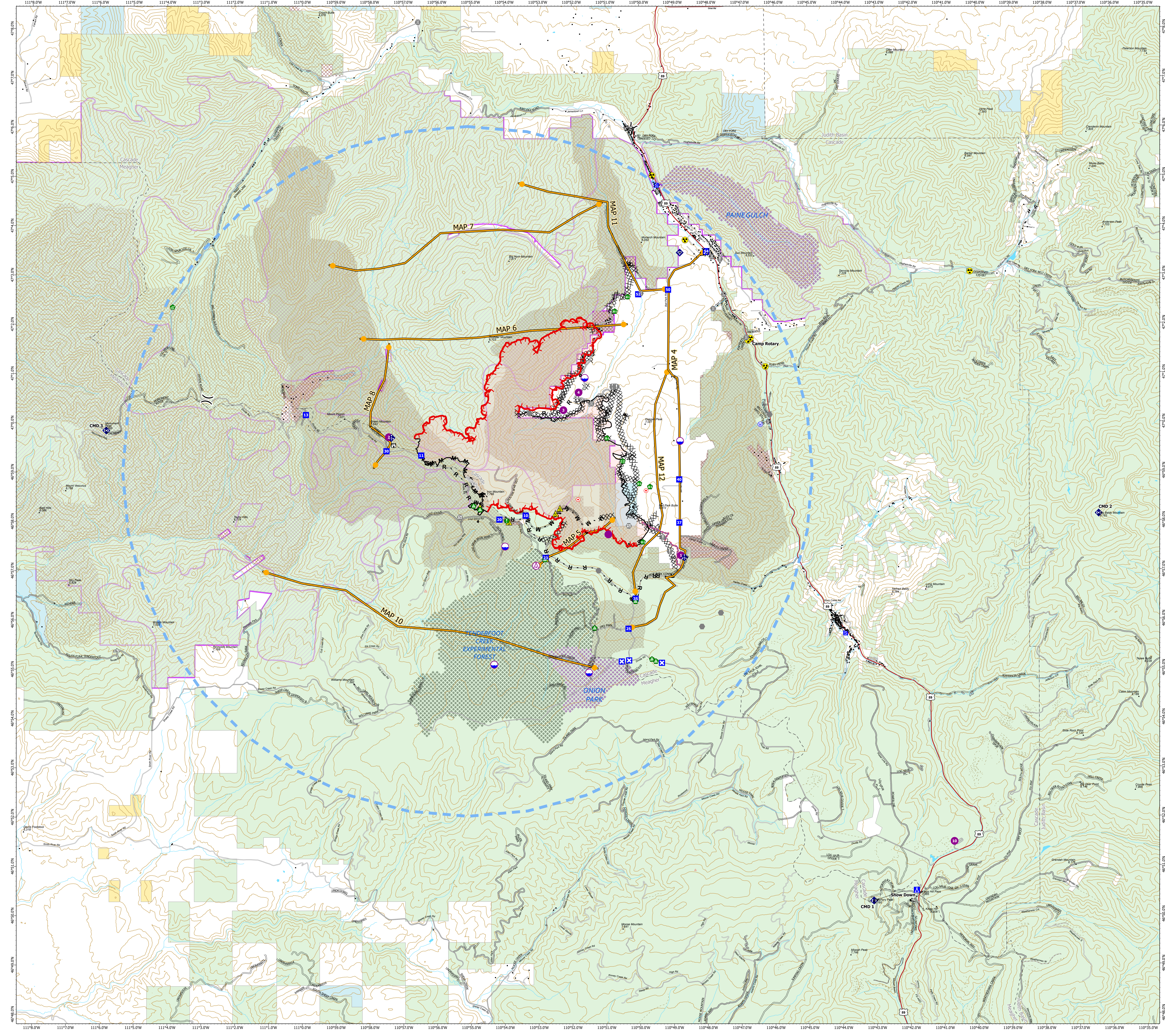
MT-HLF-5079

Approx. 8,603 GIS Acres @ 8/3 2325

Operational Shift:
8/6/2021



- Structure - State Data
- Aerial Hazard
- Dip Site
- Hellsport
- Division Break
- Drop Point
- Closure
- Camp
- Staging Area
- Lookout
- Hot Spot - Spot Fire
- Value at Risk
- Other
- Gate
- Fire Station
- Bridge
- Water Development or Draft Site
- Stream Crossing
- Resource Location
- Landing or Log Deck
- Fence - Cut/Damaged
- Mobile Weather Unit
- Internet Access
- Repeater
- Safety Zone
- Hazard
- Water Source
- Completed Dozer Line
- Completed Fuel Break
- Completed Hand Line
- Completed Mixed Construction Line
- Completed Road as Line
- Planned Road as Line
- Planned Secondary Line
- Access or Improved Road
- Management Action Point
- Retardant Drop
- Temporary Flight Restriction
- Fire Edge
- Contained Line
- Wildfire Daily Fire Perimeter
- USFS Roads Decommissioned
- High Clearance Road
- Road
- Primary Highway
- Secondary Highway
- Paved Roads
- Dirt (Not Paved)
- County Boundary
- Land Ownership
 - Local Government
 - State Government
 - US Bureau of Land Management
 - US Bureau of Reclamation
 - US Dept of Agriculture
 - US Dept of Defense
 - US Fish and Wildlife Service
 - US Forest Service
 - Other US Government
 - Research Natural Areas
 - Tenderfoot Experimental Forest
 - Inventoried Roadless Areas
 - Pastures
 - Range Allotments



Created by: SA Red Team
Date Exported: 8/5/2021 2053

North American 1983 Datum, Lat/Long Grid