

Balsinger Fire Operations Map

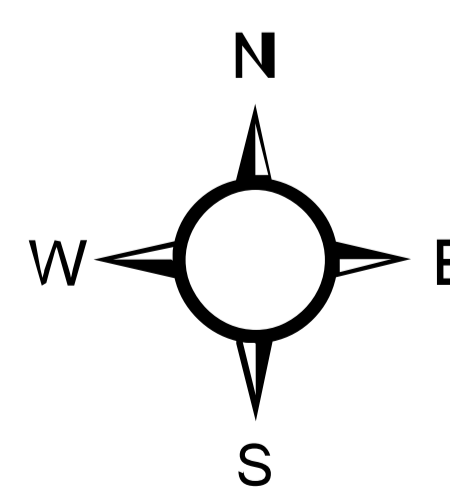
MT-HLF-5079

Approx. 8,603 GIS Acres @ 8/4 2325

Operational Shift:
8/6/2021



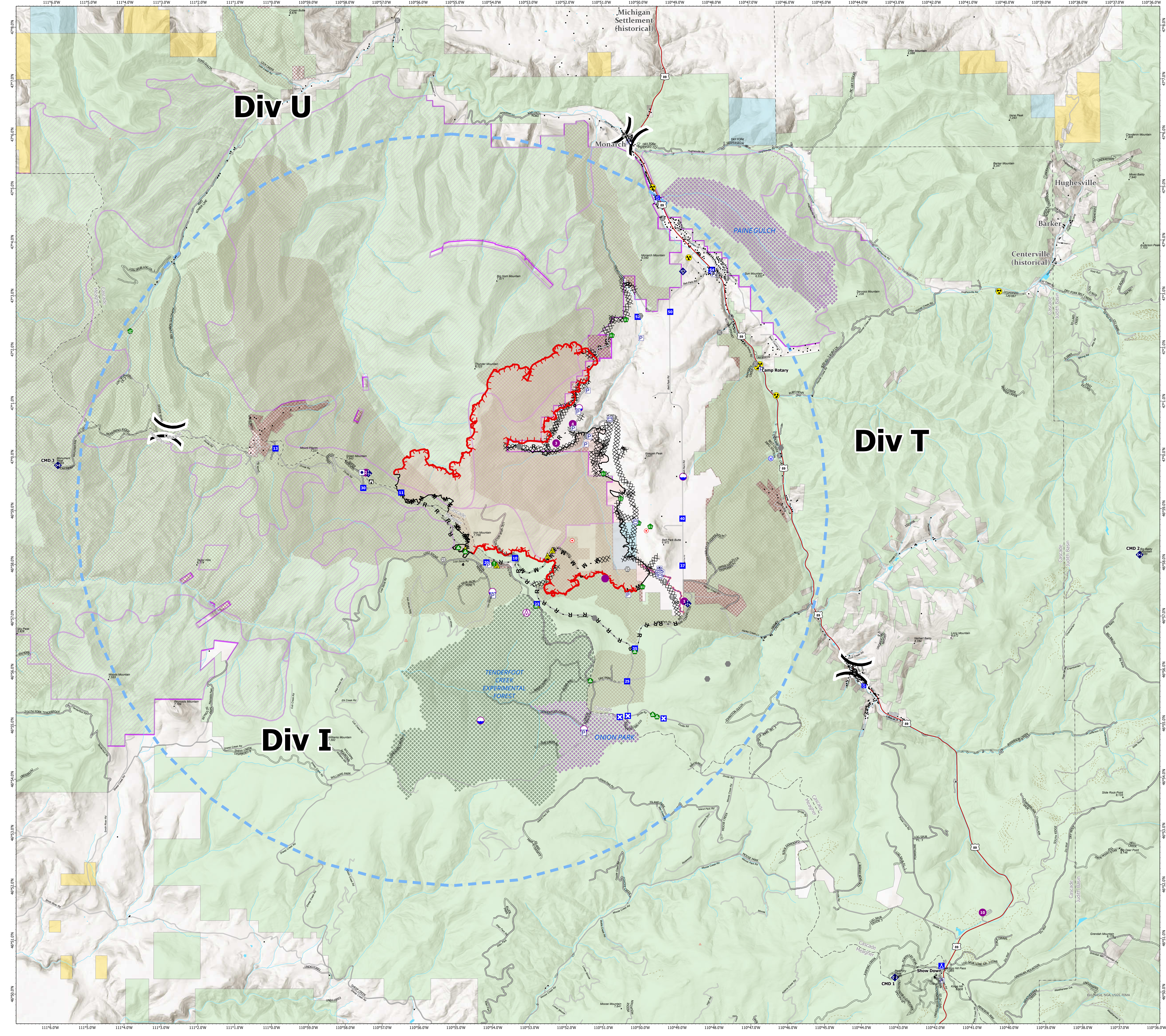
- Structure - State Data
- Aerial Hazard
- Dip Site
- Hot Spot
- Division Break
- Drop Point
- Closure
- Camp
- Staging Area
- Lookout
- Hot Spot - Spot Fire
- Value at Risk
- Other
- Gate
- Fire Station
- Bridge
- Water Development or Draft Site
- Stream Crossing
- Resource Location
- Landing or Log Deck
- Fence - Cut/Damaged
- Mobile Weather Unit
- Internet Access
- Roadblock
- Safety Zone
- Hazard
- Water Source
- Completed Dozer Line
- Completed Fuel Break
- Completed Hand Line
- Completed Mixed Construction Line
- Completed Road as Line
- Planned Road as Line
- Planned Secondary Line
- Access or Improved Road
- Retardant Drop
- Temporary Flight Restriction
- Fire Edge
- Contained Line
- Wildfire Daily Fire Perimeter
- USFS Roads Decommissioned
- High Clearance Road
- Road
- Primary Highway
- Paved Roads
- Dirt (Not Paved)
- Streams
- County Boundary
- Waterbody
- GNIS Populated Places
- Some
- Land Ownership
- Local Government
- State Government
- US Bureau of Land Management
- US Bureau of Reclamation
- US Dept of Agriculture
- US Dept of Defense
- US Fish and Wildlife Service
- US Forest Service
- Other US Government
- Research Natural Areas
- Tenderfoot Experimental Forest
- Inventoried Roadless Areas
- Pastures
- Range Allotments



0 0.47 0.95 1.9 2.85 3.8 Miles

Created by: SA Red Team
Date Exported: 8/5/2021 2049

North American 1983 Datum, Lat/Long Grid



111°6.0'W 111°5.0'W 111°4.0'W 111°3.0'W 111°2.0'W 111°1.0'W 111°0.0'W 110°59.0'W 110°58.0'W 110°57.0'W 110°56.0'W 110°55.0'W 110°54.0'W 110°53.0'W 110°52.0'W 110°51.0'W 110°50.0'W 110°49.0'W 110°48.0'W 110°47.0'W 110°46.0'W 110°45.0'W 110°44.0'W 110°43.0'W 110°42.0'W 110°41.0'W 110°40.0'W 110°39.0'W 110°38.0'W 110°37.0'W 110°36.0'W