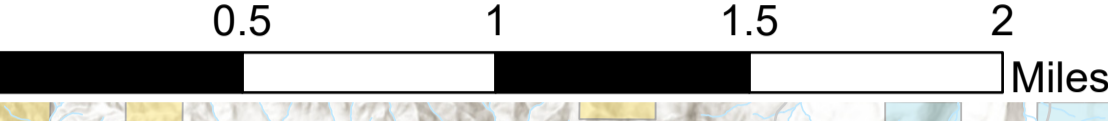


# Air Operations All Fires Overview With Hazards

American Fork - MT-HLF-005087  
Divide Complex: Balsinger & Ellis  
MT-HLF-005079  
Woods Creek - MT-HLF-000258

8/7/2021

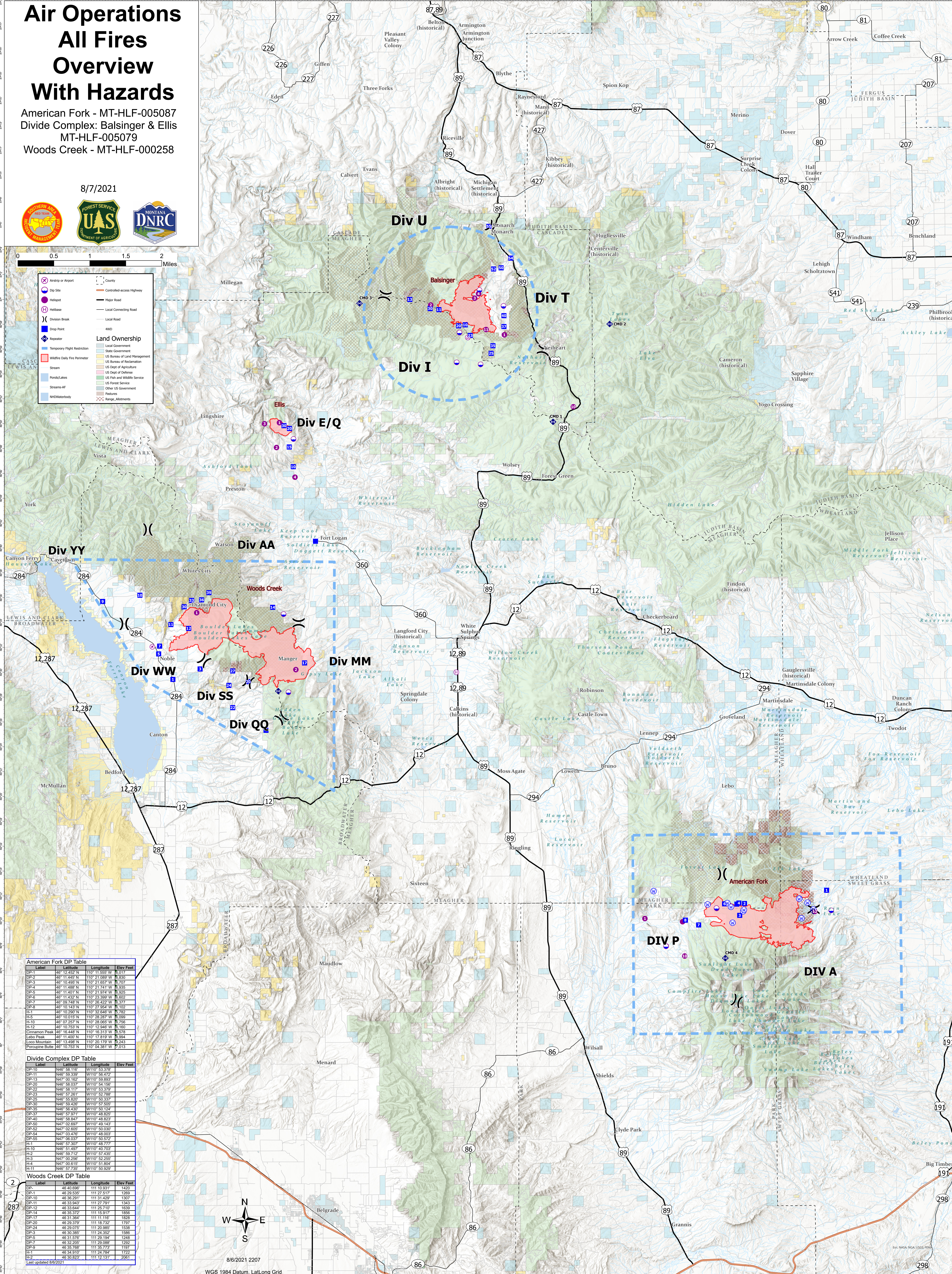


**Legend**

- Airstrip or Airport
- Dip Site
- Helidrop
- Helibase
- Division Break
- Drop Point
- Repeater
- Temporary Flight Restriction
- Wildfire Daily Fire Perimeter
- Stream
- Ponds/Lakes
- Streams w/F
- NHDWaterbody
- Controlled-access Highway
- Major Road
- Local Connecting Road
- Local Road

**Land Ownership**

- Local Government
- State Government
- US Bureau of Land Management
- US Bureau of Reclamation
- US Dept of Agriculture
- US Dept of Defense
- US Fish and Wildlife Service
- US Forest Service
- Other US Government
- Private
- Range Allotments



**American Fork DP Table**

Label	Latitude	Longitude	Elev Feet
DP-1	46° 12.452' N	110° 11.552' W	6,312
DP-2	46° 11.445' N	110° 21.089' W	6,830
DP-3	46° 10.485' N	110° 21.657' W	6,707
DP-4	46° 11.486' N	110° 21.741' W	6,206
DP-5	46° 11.401' N	110° 21.974' W	6,925
DP-6	46° 11.432' N	110° 23.399' W	6,602
DP-7	46° 08.748' N	110° 26.422' W	6,377
DP-8	46° 10.743' N	110° 27.964' W	6,102
H-1	46° 10.200' N	110° 32.646' W	6,782
H-5	46° 10.015' N	110° 28.287' W	6,099
H-10	46° 07.257' N	110° 29.052' W	6,156
H-12	46° 10.753' N	110° 12.945' W	6,160
Cinnamon Peak	46° 16.448' N	110° 16.313' W	6,578
Lebo Peak	46° 11.430' N	110° 17.819' W	6,294
Loco Mountain	46° 13.498' N	110° 20.179' W	6,243
Porcupine Butte	46° 10.753' N	110° 04.381' W	7,013

**Divide Complex DP Table**

Label	Latitude	Longitude	Elev Feet
DP-10	N46° 58.116'	W110° 53.378'	
DP-11	N46° 59.339'	W110° 56.472'	
DP-13	N47° 01.162'	W110° 59.863'	
DP-20	N46° 58.037'	W110° 54.156'	
DP-22	N46° 58.117'	W110° 53.379'	
DP-23	N46° 57.261'	W110° 52.788'	
DP-25	N46° 55.620'	W110° 50.337'	
DP-30	N46° 59.426'	W110° 57.595'	
DP-35	N46° 56.430'	W110° 50.744'	
DP-37	N46° 57.971'	W110° 48.825'	
DP-40	N46° 58.847'	W110° 48.823'	
DP-50	N47° 02.697'	W110° 49.143'	
DP-52	N47° 02.697'	W110° 50.629'	
DP-54	N47° 03.476'	W110° 48.003'	
DP-55	N47° 06.037'	W110° 50.572'	
H-1	N46° 57.971'	W110° 48.777'	
H-10	N46° 51.497'	W110° 40.703'	
H-2	N46° 59.712'	W110° 57.435'	
H-3	N47° 00.268'	W110° 52.255'	
H-4	N47° 00.615'	W110° 51.804'	
H-11	N46° 57.735'	W110° 50.929'	

**Woods Creek DP Table**

Label	Latitude	Longitude	Elev Feet
DP-1	46 40.696'	111 10.931'	1425
DP-2	46 39.529'	111 21.717'	1269
DP-10	46 36.291'	111 31.429'	1307
DP-11	46 33.943'	111 27.791'	1343
DP-12	46 33.664'	111 27.017'	1639
DP-14	46 35.372'	111 15.917'	1856
DP-17	46 31.364'	111 11.116'	1828
DP-20	46 29.279'	111 18.727'	1797
DP-24	46 29.079'	111 20.985'	1538
DP-3	46 30.385'	111 24.352'	1588
DP-5	46 31.578'	111 20.144'	1248
DP-7	46 32.409'	111 29.089'	1292
DP-9	46 35.768'	111 35.773'	1197
H-1	46 36.810'	111 24.784'	1722
H-2	46 30.822'	111 21.311'	2061



8/6/2021 2207  
WGS 1984 Datum, Lat/Long Grid