

Ellis Fire Repair Map

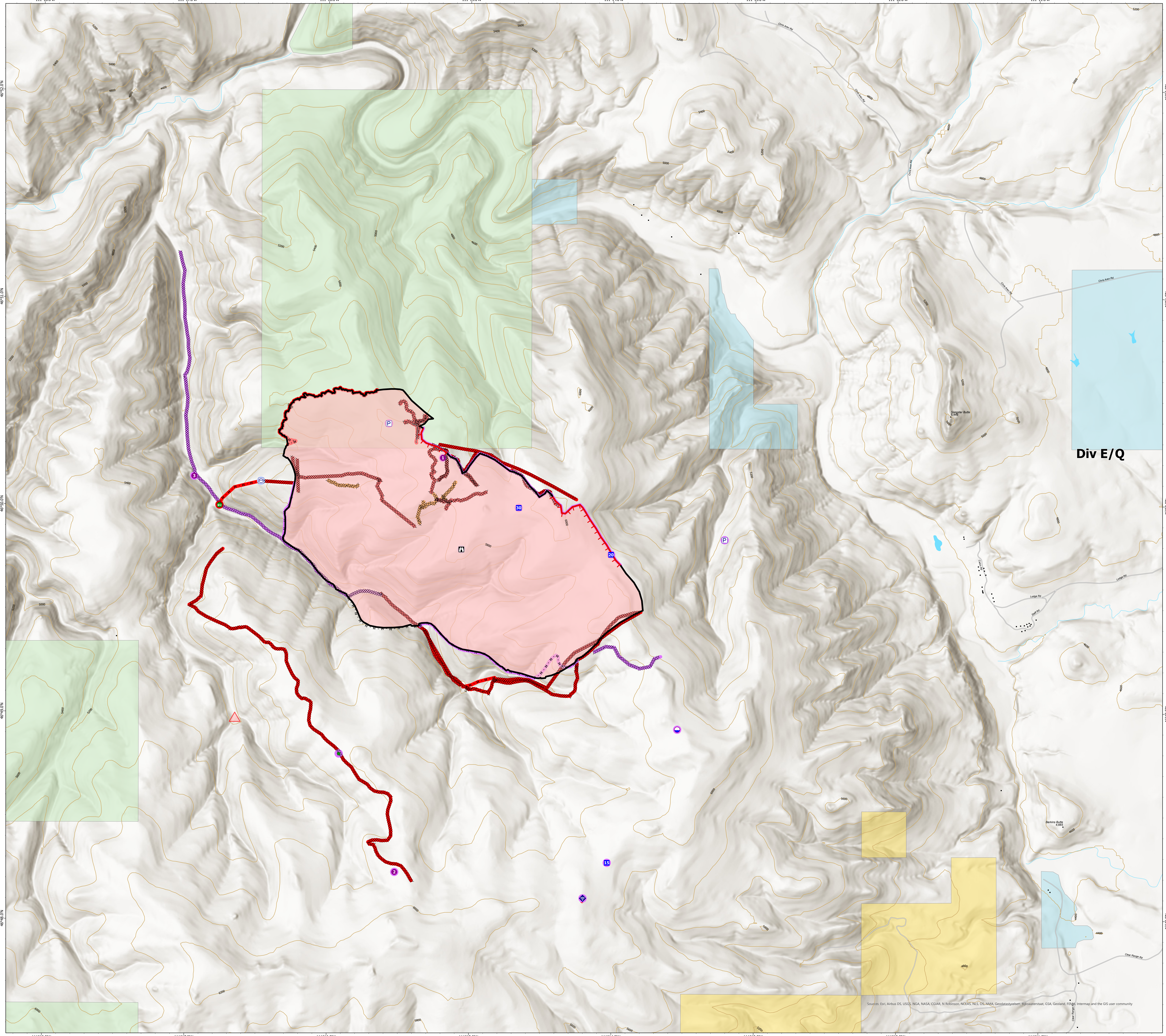
MT-HLF-5079

Approx. 1,227 GIS Acres @ 8/6 1219

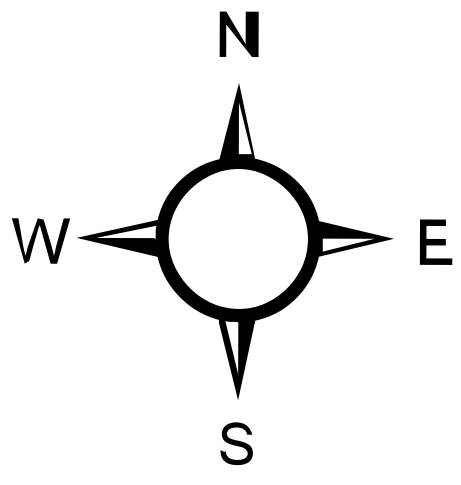
Operational Shift:
8/7/2021



- Structure - State Data
- Wildfire Daily Fire Perimeter
- Dirt (Not Paved)
- Streams
- Contour 200ft
- County Boundary
- Waterbody
- GNIS Populated Places/Some
- Land Ownership
 - Local Government
 - State Government
 - US Bureau of Land Management
 - US Bureau of Reclamation
 - US Dept of Agriculture
 - US Dept of Defense
 - US Fish and Wildlife Service
 - US Forest Service
 - Other US Government
 - Research Natural Areas
 - Tenderfoot Experimental Forest
 - Inventoried Roadless Areas
 - Pastures
 - Rangeland Adjustments
 - Label Point
- Accountable Property
 - Other Property
 - Pump
 - Water Tank
- Air Operations
 - Aerial Hazard
 - Airstrip or Airport
 - Check Point
 - Dip Site
 - Mobile Retardant Base
 - Helipoint
 - Helibase
 - Strip Site
 - Unimproved Landing Area
- Assignment Breaks
 - Division Break
 - Branch Break
 - Zone Break
- Logistics
 - Medical
 - Incident Command Post
 - Drop Point
- Planned Fuel Break
- Planned Hand Line
- Planned Hand Construction Line
- Planned PLOW Line
- Planned Road as Line
- Planned Secondary Line
- Access or Improved Road
- Fence
- Highlighted Feature
- Management Action Point
- Other
- Repair
 - Escape Route
 - Air Ops
 - Aerial Hazard
 - Water Drop
 - Foam Drop
 - Retardant Drop
 - Route
 - US Launch and Recovery Zone
 - Fire Perimeter
 - Fire Edge
 - Contained Line
 - Event Polygon
 - Other
 - Prescribed Fire
 - Wildfire Daily Fire Perimeter
 - Repair Status Point
 - Completed - Inspected
 - In Use - Fire Management
 - Completed - Ready for Inspection
 - In Progress
 - Repair Needed
 - No Repair Needed
 - Other - See Comments
 - Unknown
 - Repair Status Line
 - Completed - Inspected
 - In Use - Fire Management
 - Completed - Ready for Inspection
 - In Progress
 - Repair Needed
 - No Repair Needed
 - Other - See Comments
 - Unknown



Div E/Q



0 0.13 0.25 0.5 0.75 1 Miles

Created by: SA Red Team
Date Exported: 8/6/2021 2105

North American 1983 Datum. Lat/Long Grid

Sources: Esri, Airbus DS, USGS, NGA, NASA, CGLAR, N Robinson, NCEM, NLS, OS, NANA, Geodatasystem, BSB, Intermap, and the GIS user community