

Air Operations All Fires Overview With Hazards

American Fork - MT-HLF-005087
Divide Complex: Baisinger & Ellis
MT-HLF-005079
Woods Creek - MT-HLF-000258

8/8/2021

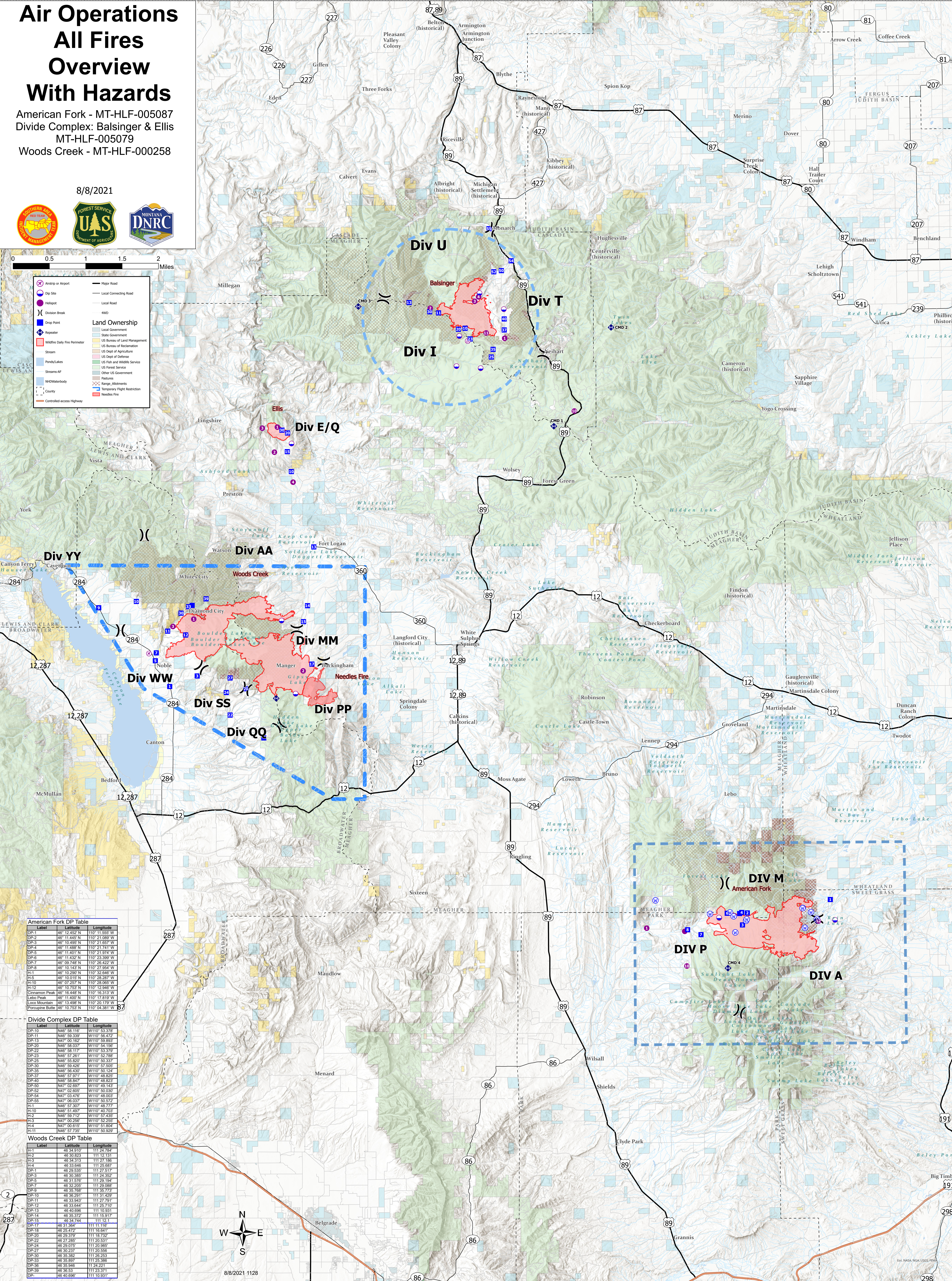


Legend

- Airstrip or Airport
- Dip Site
- Helipad
- Drop Point
- Repeater
- Wildfire Daily Fire Perimeter
- Stream
- Ponds/Lakes
- Streams AF
- NHDI/Waterbody
- County
- Controlled-access Highway
- Major Road
- Local Connecting Road
- Local Road
- 4WD

Land Ownership

- Local Government
- State Government
- US Bureau of Land Management
- US Bureau of Reclamation
- US Dept of Agriculture
- US Dept of Defense
- US Fish and Wildlife Service
- US Forest Service
- Other US Government
- Features
- × Change Altitudes
- Temporary Flight Restriction
- Needles Fire



American Fork DP Table

Label	Latitude	Longitude
DP-1	46° 12.452' N	110° 11.555' W
DP-2	46° 11.445' N	110° 21.089' W
DP-3	46° 10.495' N	110° 21.657' W
DP-4	46° 10.468' N	110° 21.741' W
DP-5	46° 11.461' N	110° 21.974' W
DP-6	46° 11.432' N	110° 23.399' W
DP-7	46° 09.748' N	110° 26.422' W
DP-8	46° 10.183' N	110° 27.054' W
H-1	46° 10.290' N	110° 32.846' W
H-5	46° 10.015' N	110° 28.287' W
H-10	46° 07.221' N	110° 28.865' W
H-12	46° 10.753' N	110° 12.946' W
Cinnamon Peak	46° 16.448' N	110° 16.313' W
Lobo Peak	46° 14.505' N	110° 17.919' W
Loco Mountain	46° 13.498' N	110° 20.179' W
Porcupine Butte	46° 10.753' N	110° 04.381' W

Divide Complex DP Table

Label	Latitude	Longitude
DP-10	N46° 58.116'	W110° 53.378'
DP-11	N46° 59.339'	W110° 56.472'
DP-13	N47° 00.162'	W110° 59.663'
DP-20	N46° 58.037'	W110° 54.156'
DP-22	N46° 58.117'	W110° 53.379'
DP-23	N46° 57.261'	W110° 52.786'
DP-25	N46° 55.827'	W110° 50.337'
DP-30	N46° 59.426'	W110° 57.505'
DP-35	N46° 36.436'	W110° 50.124'
DP-37	N46° 57.219'	W110° 48.862'
DP-40	N46° 58.847'	W110° 48.823'
DP-50	N47° 02.697'	W110° 49.143'
DP-52	N47° 02.698'	W110° 49.143'
DP-54	N47° 03.476'	W110° 48.003'
DP-55	N47° 06.037'	W110° 50.572'
H-1	N46° 57.307'	W110° 52.717'
H-10	N46° 51.497'	W110° 40.703'
H-2	N46° 59.712'	W110° 57.435'
H-3	N46° 57.261'	W110° 52.786'
H-4	N47° 00.619'	W110° 51.804'
H-11	N46° 57.735'	W110° 50.929'

Woods Creek DP Table

Label	Latitude	Longitude
H-1	46 34.310'	111 24.784'
H-2	46 30.923'	111 23.311'
H-3	46 34.313'	111 27.186'
H-4	46 33.646'	111 25.687'
DP-1	46 29.535'	111 23.517'
DP-3	46 30.385'	111 24.352'
DP-5	46 31.576'	111 29.194'
DP-7	46 32.208'	111 29.088'
DP-8	46 35.768'	111 35.773'
DP-10	46 36.291'	111 37.429'
DP-11	46 33.942'	111 23.771'
DP-12	46 33.942'	111 23.771'
DP-13	46 40.696'	111 10.931'
DP-14	46 35.372'	111 15.917'
DP-15	46 34.744'	111 12.121'
DP-17	46 31.364'	111 11.116'
DP-18	46 25.472'	111 16.841'
DP-20	46 33.979'	111 18.332'
DP-22	46 27.285'	111 20.531'
DP-24	46 29.075'	111 20.985'
DP-27	46 30.237'	111 20.985'
DP-30	46 35.382'	111 26.253'
DP-33	46 33.897'	111 23.386'
DP-36	46 35.946'	111 24.221'
DP-39	46 35.531'	111 23.271'
DP	46 40.696'	111 10.931'



8/8/2021 1128
WGS 1984 Datum, Lat/Long Grid