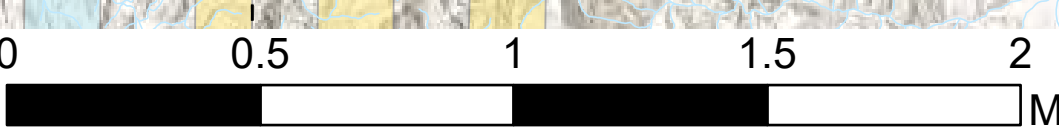


Air Operations All Fires Overview With Hazards

American Fork - MT-HLF-005087
Divide Complex: Balsinger & Ellis
MT-HLF-005079
Woods Creek - MT-HLF-000258

8/10/2021



Legend

- City Site
- Setpoint
- Drop Point
- Capstone
- Completed Burn Line
- Completed Fuel Break
- Completed Hand Line
- Completed Head Construction Line
- Completed Floor Line
- Completed Road as Line
- Planned Door Line
- Planned Head Construction Line
- Planned Road as Line
- Planned Secondary Line
- Access or Improved Road
- Other
- Escapes Road
- Route
- Temporary Flight Restriction
- Fire Edge
- Width Daily Fire Reverses
- Stream
- Ponds/Lakes
- County

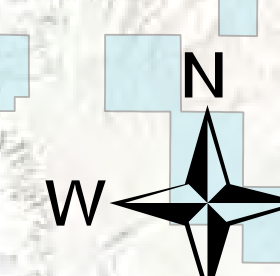
Land Ownership

- Local Government
- State Government
- US Bureau of Land Management
- US Bureau of Reclamation
- US Dept of Agriculture
- US Dept of Interior
- US Fish and Wildlife Service
- US Forest Service
- Other US Government

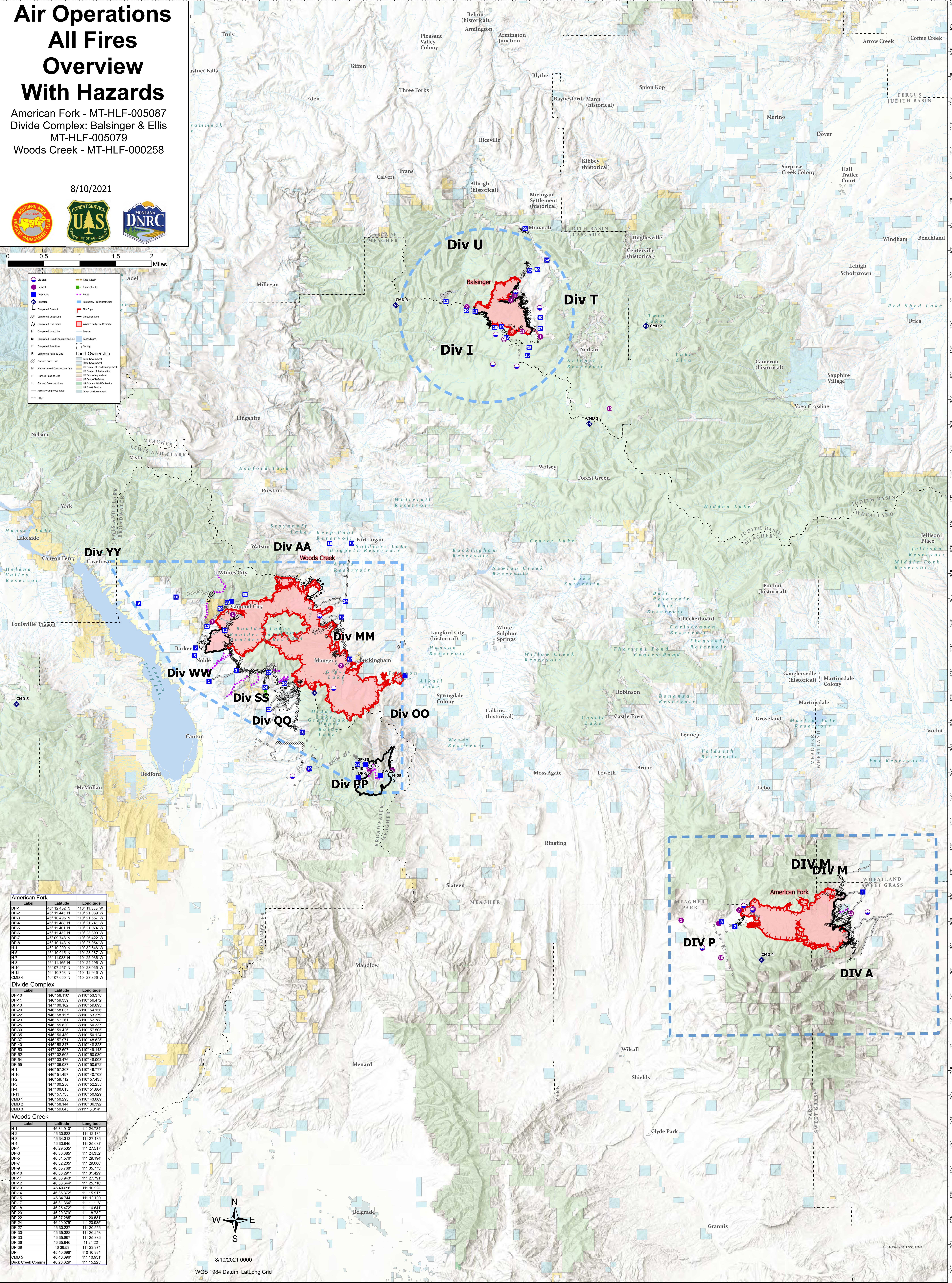
Label	Latitude	Longitude
DP-1	46° 12.452' N	110° 11.555' W
DP-2	46° 11.445' N	110° 21.089' W
DP-3	46° 10.652' N	110° 21.853' W
DP-4	46° 11.488' N	110° 21.741' W
DP-5	46° 11.401' N	110° 21.974' W
DP-6	46° 11.432' N	110° 23.399' W
DP-7	46° 09.748' N	110° 28.422' W
DP-8	46° 10.143' N	110° 27.954' W
DP-9	46° 10.250' N	110° 32.645' W
H-3	46° 10.815' N	110° 28.281' W
H-7	46° 11.083' N	110° 25.936' W
H-8	46° 11.165' N	110° 24.296' W
H-10	46° 07.257' N	110° 29.055' W
H-12	46° 10.753' N	110° 12.946' W
CMD 4	46° 07.080' N	110° 23.366' W

Label	Latitude	Longitude
DP-10	N46° 58.116'	W110° 53.378'
DP-11	N46° 59.339'	W110° 56.472'
DP-13	N47° 00.162'	W110° 55.893'
DP-20	N46° 58.037'	W110° 54.156'
DP-22	N46° 58.117'	W110° 53.379'
DP-23	N46° 57.261'	W110° 53.788'
DP-25	N46° 55.820'	W110° 50.337'
DP-30	N46° 59.426'	W110° 57.505'
DP-33	N46° 56.430'	W110° 50.124'
DP-37	N46° 57.971'	W110° 48.823'
DP-40	N46° 58.847'	W110° 48.823'
DP-50	N47° 02.697'	W110° 49.143'
DP-52	N47° 02.695'	W110° 50.030'
DP-54	N47° 03.476'	W110° 48.003'
DP-55	N47° 06.037'	W110° 50.572'
H-10	N46° 51.497'	W110° 40.703'
H-2	N46° 59.712'	W110° 57.435'
H-3	N47° 00.256'	W110° 52.955'
H-4	N47° 00.615'	W110° 51.804'
H-11	N46° 57.735'	W110° 50.929'
CMD 1	N46° 58.293'	W110° 53.989'
CMD 2	N46° 58.144'	W110° 38.392'
CMD 3	N46° 59.845'	W111° 5.814'

Label	Latitude	Longitude
H-1	46 34.910	111 24.744
H-2	46 30.823	111 12.131
H-3	46 34.313	111 27.186
H-4	46 31.648	111 27.037
DP-1	46 29.539	111 27.517
DP-3	46 30.385	111 24.352
DP-5	46 31.292	111 23.989
DP-7	46 32.292	111 29.088
DP-9	46 32.768	111 35.773
DP-10	46 36.291	111 31.429
DP-11	46 33.842	111 27.921
DP-12	46 33.644	111 25.710
DP-13	46 40.696	111 10.931
DP-14	46 35.372	111 15.917
DP-15	46 34.744	111 12.100
DP-17	46 31.364	111 11.116
DP-18	46 29.472	111 16.641
DP-20	46 29.379	111 18.732
DP-22	46 27.285	111 20.531
DP-24	46 29.079	111 19.989
DP-27	46 30.237	111 20.556
DP-30	46 35.382	111 26.253
DP-33	46 35.897	111 25.386
DP-36	46 35.948	111 24.221
DP-39	46 36.53	111 23.371
DP-41	46 40.696	111 10.931
CMD 5	46 40.696	111 10.931
Duck Creek Comms	46 28.629	111 15.225



8/10/2021 0000
WGS 1984 Datum, Lat/Long Grid



© NASA, NGA, USGS, FEMA