

Pilot Map

Balsinger Fire
MT-HLF-5079
08/11 Day

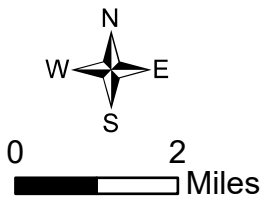
Appx 8,614 ac at
8/8/2021 2344



- Aerial Hazard
- Dip Site
- Helispot
- Division Break
- Drop Point
- Landing or Log Deck
- Repeater
- Water Source
- Temporary Flight Restriction
- Fire Edge
- Contained Line
- Trails
- Inventoried Roadless Area
- State Public Lands
- Other State Lands
- Bureau of Land Management Lands
- Helena-Lewis and Clark National Forest
- Wildfire Daily Fire Perimeter

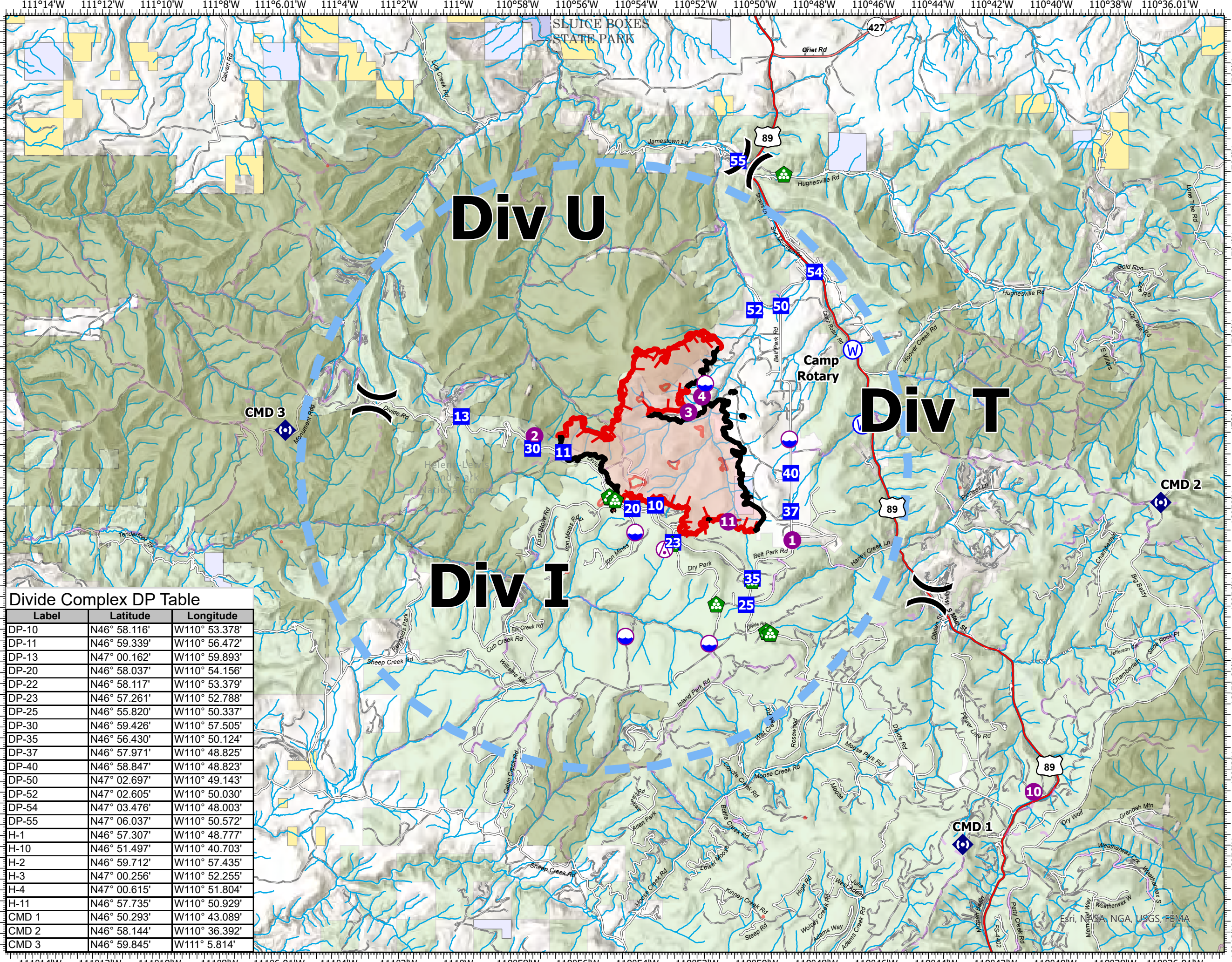
Divide Complex DP Table

Label	Latitude	Longitude
DP-10	N46° 58.116'	W110° 53.378'
DP-11	N46° 59.339'	W110° 56.472'
DP-13	N47° 00.162'	W110° 59.893'
DP-20	N46° 58.037'	W110° 54.156'
DP-22	N46° 58.117'	W110° 53.379'
DP-23	N46° 57.261'	W110° 52.788'
DP-25	N46° 55.820'	W110° 50.337'
DP-30	N46° 59.426'	W110° 57.505'
DP-35	N46° 56.430'	W110° 50.124'
DP-37	N46° 57.971'	W110° 48.825'
DP-40	N46° 58.847'	W110° 48.823'
DP-50	N47° 02.697'	W110° 49.143'
DP-52	N47° 02.605'	W110° 50.030'
DP-54	N47° 03.476'	W110° 48.003'
DP-55	N47° 06.037'	W110° 50.572'
H-1	N46° 57.307'	W110° 48.777'
H-10	N46° 51.497'	W110° 40.703'
H-2	N46° 59.712'	W110° 57.435'
H-3	N47° 00.256'	W110° 52.255'
H-4	N47° 00.615'	W110° 51.804'
H-11	N46° 57.735'	W110° 50.929'
CMD 1	N46° 50.293'	W110° 43.089'
CMD 2	N46° 58.144'	W110° 36.392'
CMD 3	N46° 59.845'	W111° 5.814'



SA Red Team
8/10/2021 1906

North American 1983 Datum. LatLong Grid



Div U

Div T

Div I

SLUICE BOXES
STATE PARK

Camp
Rotary

CMD 2

CMD 1

CMD 3

Esri, NSA, NGA, USGS, FEMA