

Balsinger Fire

Briefing Map

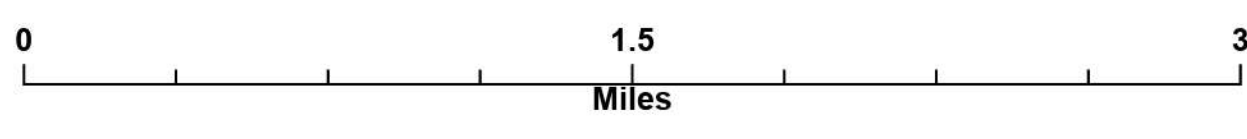
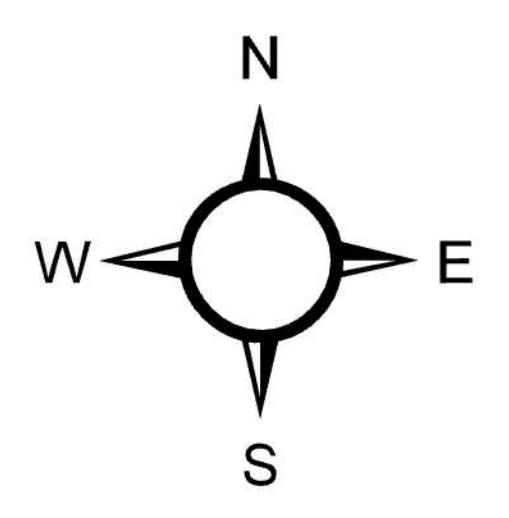
MT-HLF-5079

8,614 Acres @ 8/8 2344

Operational Shift:
8/12/2021

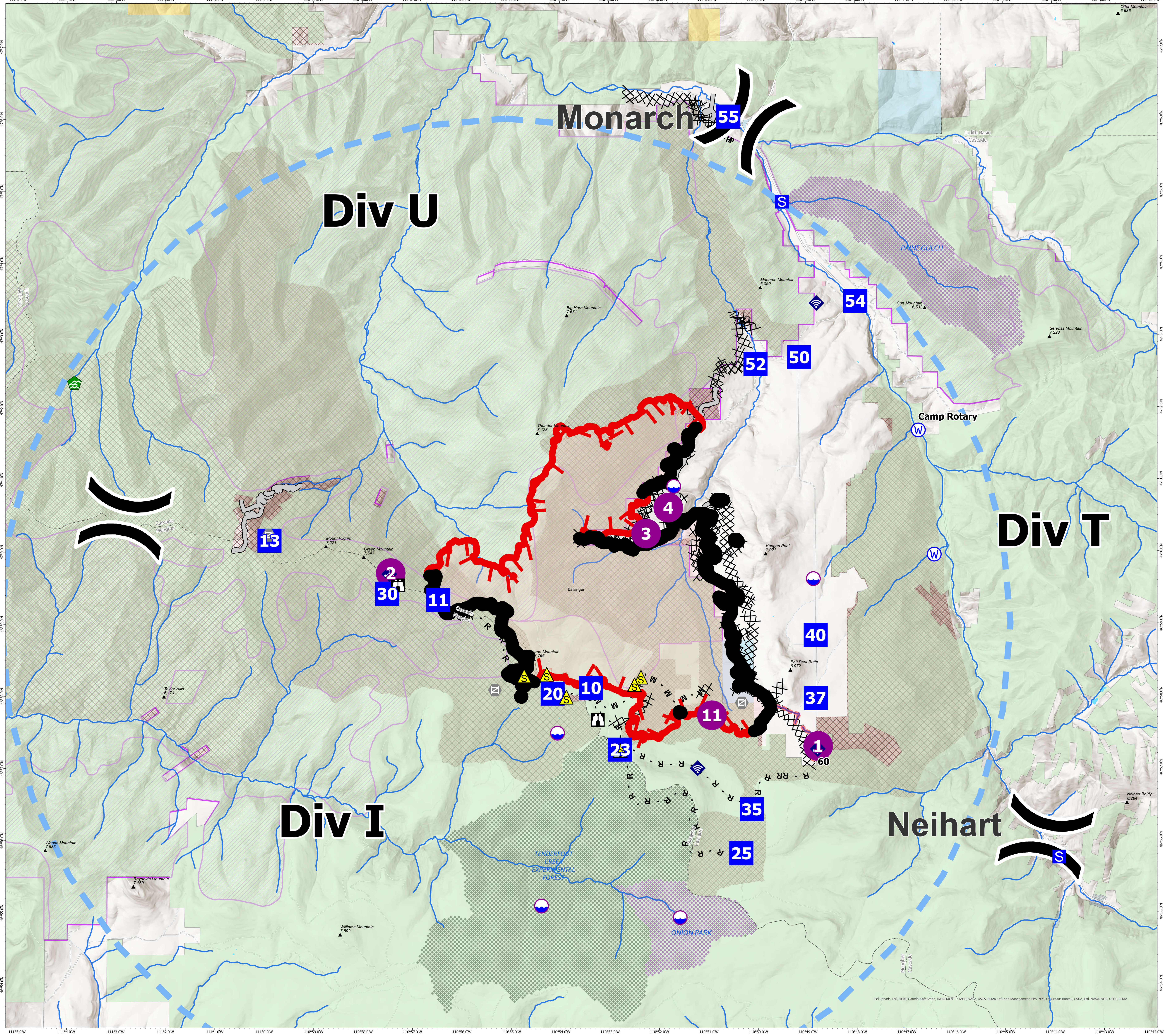


- Wildfire Daily Fire Perimeter
- Dip Site
- Helispot
- Division Break
- Drop Point
- Staging Area
- Lookout
- Gate
- Water Development or Draft Site
- Mobile Weather Unit
- Internet Access
- Repeater
- Safety Zone
- Water Source
- Completed Dozer Line
- Completed Fuel Break
- Completed Hand Line
- Completed Mixed Construction Line
- Completed Plow Line
- Completed Road as Line
- Planned Road as Line
- Access or Improved Road
- Retardant Drop
- Temporary Flight Restriction
- Fire Edge
- Contained Line
- Local Government
- State Government
- US Bureau of Land Management
- US Dept of Defense
- US Forest Service
- Research Natural Areas
- Tenderfoot Experimental Forest
- Inventoried Roadless Areas
- Streams
- Controlled-access Highway
- Major Road
- Local Connecting Road
- Local Road
- 4WD



Created by: RMIMT 1 - GISS
Date Exported: 8/11/2021 2256

North American 1983 Datum, LatLong Grid



Esri, Canada, Esri, HERE, Garmin, SafeGraph, INCREMENT P, METI/WA, USGS, Bureau of Land Management, EPA, NPS, US Census Bureau, USDA, Esri, NASA, NOAA, USGS, FEMA