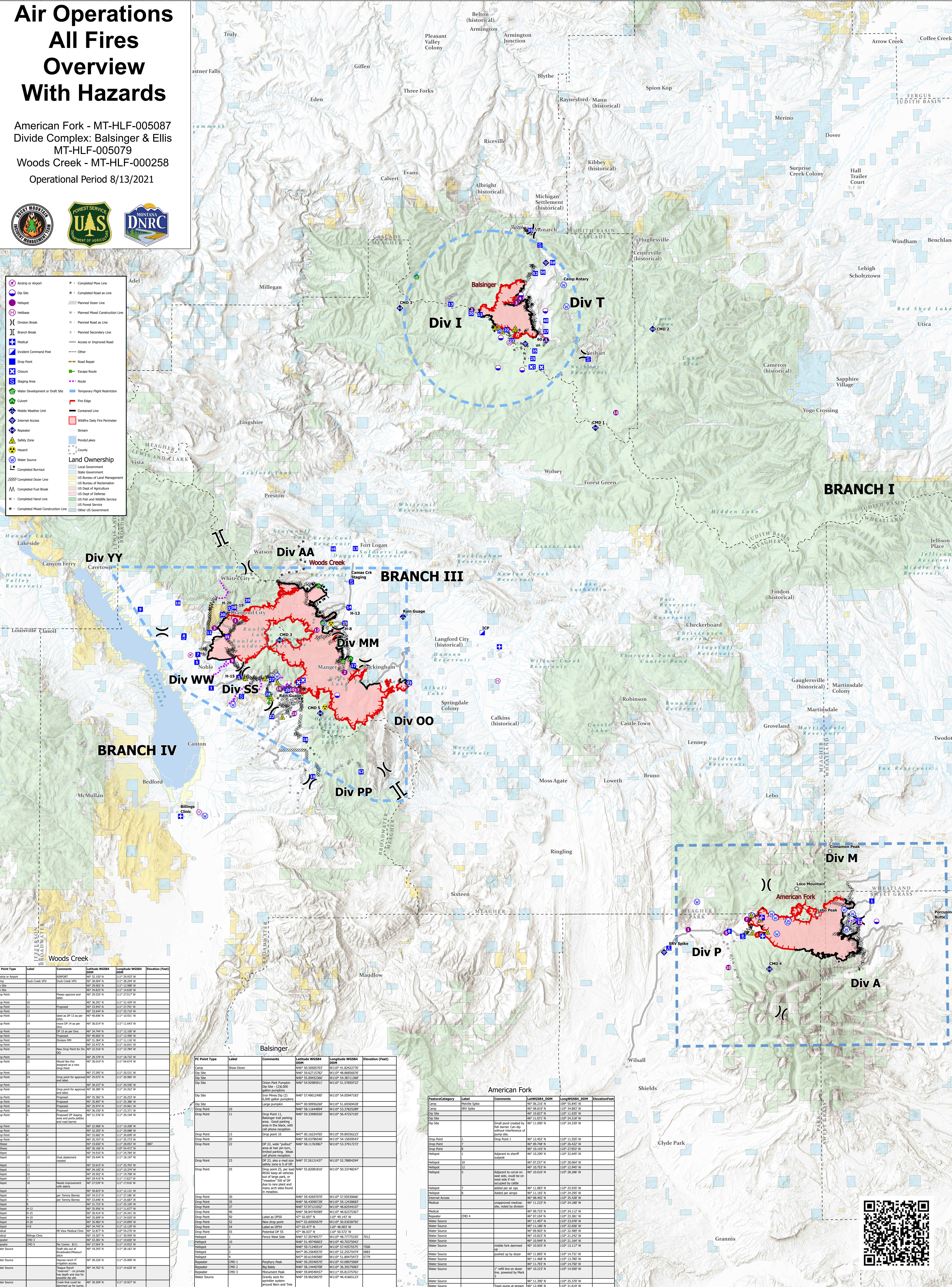


Air Operations All Fires Overview With Hazards

American Fork - MT-HLF-005087
Divide Complex: Balsinger & Ellis
MT-HLF-005079
Woods Creek - MT-HLF-000258
Operational Period 8/13/2021



- Airstrip or Airport
- Camp
- Dip Site
- Helibase
- Medical
- Drop Point
- Closure
- Staging Area
- Water Development or Draft Site
- Mobile Weather Unit
- Internet Access
- Repeater
- Safety Zone
- Water Source
- Completed Burnout
- Completed Fuel Break
- Completed Hand Line
- Completed Mixed Construction Line



FC Point Type	Label	Comments	Latitude WGS84	Longitude WGS84	Elevation (Feet)
Airstrip	Duck Creek VTD	Airstrip	46° 22.252' N	111° 29.212' W	
Camp	Duck Creek VTD	Duck Creek VTD	46° 22.252' N	111° 29.212' W	
Dip Site			46° 29.887' N	111° 12.988' W	
Dip Site			46° 29.887' N	111° 12.988' W	
Drop Point	1	Please approve and label	46° 29.535' N	111° 27.517' W	
Drop Point	10		46° 36.261' N	111° 31.426' W	
Drop Point	11	Processed	46° 33.947' N	111° 27.791' W	
Drop Point	12		46° 33.947' N	111° 27.791' W	
Drop Point	13	label as DP 13 as per 2021	46° 40.686' N	111° 18.931' W	
Drop Point	14	move DP 14 as per 2021	46° 36.814' N	111° 13.647' W	
Drop Point	15	DP 15 as per Dis	46° 34.764' N	111° 12.100' W	
Drop Point	16	Processed	46° 40.687' N	111° 13.498' W	
Drop Point	17	Processed	46° 31.324' N	111° 13.102' W	
Drop Point	18	Processed	46° 25.432' N	111° 16.641' W	
Drop Point	19	New Drop Point for Div OO	46° 22.548' N	111° 15.768' W	
Drop Point	20		46° 29.379' N	111° 18.732' W	
Drop Point	21	Would like this assigned as a new Drop Point	46° 30.024' N	111° 18.024' W	
Drop Point	22		46° 27.265' N	111° 20.331' W	
Drop Point	24	Drop point for approved and label	46° 29.275' N	111° 28.985' W	
Drop Point	27		46° 30.359' N	111° 28.359' W	
Drop Point	30	Drop point for approved and label	46° 35.367' N	111° 26.357' W	
Drop Point	33	Processed	46° 38.897' N	111° 25.386' W	
Drop Point	34	Processed	46° 38.897' N	111° 25.386' W	
Drop Point	36	Processed	46° 35.574' N	111° 27.171' W	
Drop Point	38	Processed	46° 31.576' N	111° 29.194' W	
Drop Point	39	Processed DP staging area and road barriers	46° 22.909' N	111° 10.309' W	
Drop Point	7		46° 32.265' N	111° 29.688' W	
Drop Point	8		46° 35.882' N	111° 30.699' W	
Drop Point	9		46° 35.882' N	111° 30.699' W	
Helibase			46° 38.897' N	111° 28.937' W	H807
Helibase			46° 33.947' N	111° 27.791' W	
Helibase			46° 34.602' N	111° 24.768' W	
Helibase		Dust abatement pond	46° 29.441' N	111° 18.197' W	
Helibase			46° 33.815' N	111° 25.702' W	
Helibase			46° 33.815' N	111° 25.702' W	
Helibase			46° 33.815' N	111° 25.702' W	
Helibase			46° 29.432' N	111° 19.768' W	
Helibase			46° 29.432' N	111° 19.768' W	
Helibase		Needs improvement with debris	46° 23.578' N	111° 12.912' W	
Helibase			46° 30.827' N	111° 12.131' W	
Helibase		per Tommy Barnes	46° 34.513' N	111° 25.702' W	
Helibase		per Tommy Barnes	46° 33.815' N	111° 25.702' W	
Helibase			46° 31.293' N	111° 25.105' W	
Helibase			46° 35.590' N	111° 11.677' W	
Helibase			46° 24.841' N	111° 24.841' W	
Helibase			46° 31.699' N	111° 24.820' W	
Helibase			46° 30.263' N	111° 24.869' W	
Helibase			46° 35.882' N	111° 25.386' W	
Helibase			46° 35.882' N	111° 25.386' W	
Helibase			46° 35.882' N	111° 25.386' W	
Medical	Billings Clinic	190 New Medical Clinic	46° 32.807' N	111° 54.770' W	
Medical	Billings Clinic		46° 33.578' N	111° 13.171' W	
Repeater	CHD 3		46° 33.381' N	111° 19.650' W	
Repeater	CHD 5		46° 27.544' N	111° 19.827' W	
Water Source		Drill site out of Horseshoe/Meagher area	46° 19.574' N	111° 28.162' W	
Water Source			46° 38.240' N	111° 25.000' W	
Water Source		Harris ranch area	46° 34.764' N	111° 14.620' W	
Water Source		Basque Ranch (Meagher area) - provides base depth and size for portable fire line	46° 35.590' N	111° 19.927' W	
Water Source		Creek that could be utilized for fire fighting	46° 30.597' N	111° 19.927' W	
Water Source		Jackson Lake on Dalt Ranch	46° 29.977' N	111° 04.667' W	

FC Point Type	Label	Comments	Latitude WGS84	Longitude WGS84	Elevation (Feet)
Camp	Show Down	Show Down	46° 50.5065703' N	111° 01.482427776' W	
Dip Site			46° 59.62715782' N	111° 08.66856076' W	
Dip Site			46° 55.09452566' N	111° 04.32713368' W	
Dip Site			46° 54.92899111' N	111° 05.17699722' W	
Dip Site		Iron Mines Dig (7) 6,000 gallon pumps	46° 57.49012490' N	111° 04.0074183' W	
Dip Site		Drop point 11	46° 50.99955050' N	111° 00.99955050' W	
Dip Site		Drop point 11	46° 58.14644094' N	111° 03.77825889' W	
Dip Site		Drop Point 5	46° 59.39995050' N	111° 06.47572505' W	
Drop Point		Drop point 13	46° 50.16234965' N	111° 09.58926132' W	
Drop Point		Drop point 20	46° 58.07896546' N	111° 04.955943' W	
Drop Point		DP 22, wide "pullover" area of 1/4 mile in turn, limited parking. Weak cell phone reception.	46° 58.14763667' N	111° 07.78804294' W	
Drop Point		DP 23, also a mid size safety zone 1/4 mi. drop point 25, per level 1800' keep all vehicles out of drop point, or "Passover" SW of DP 24 to one point and many such sites found in meadow.	46° 57.26131437' N	111° 07.78804294' W	
Drop Point			46° 55.80818161' N	111° 09.37494947' W	
Drop Point			46° 59.42897070' N	111° 07.50536666' W	
Drop Point			46° 56.43089728' N	111° 05.12439883' W	
Drop Point			46° 57.97212102' N	111° 08.25444409' W	
Drop Point			46° 58.84426866' N	111° 08.82173667' W	
Drop Point		Label as DP50	47° 02.697' N	111° 09.143' W	
Drop Point		New drop point	46° 02.69669719' N	111° 09.08389792' W	
Drop Point		Label as DP54	47° 02.877' N	111° 08.063' W	
Drop Point		Potential DP 55	47° 06.037' N	111° 09.50372' W	
Drop Point			46° 57.20465777' N	111° 08.77773535' W	7012
Drop Point			46° 51.40946601' N	111° 09.12629442' W	
Drop Point			46° 59.71240514' N	111° 07.43575295' W	7500
Drop Point			46° 02.25640570' N	111° 09.25579474' W	3883
Drop Point			46° 02.14204060' N	111° 09.51807507' W	5779
Drop Point			46° 59.42897070' N	111° 07.50536666' W	
Drop Point			46° 58.14440768' N	111° 08.2972983' W	
Drop Point			46° 59.85494837' N	111° 05.13735461' W	
Drop Point			46° 59.96258370' N	111° 04.41652312' W	
Drop Point			46° 01.86268007' N	111° 06.21323959' W	

FeatureCategory	Label	Comments	Latitude WGS84	Longitude WGS84	Elevation (Feet)
Camp	Melville Spike		46° 06.214' N	110° 55.880' W	
Camp	SRV Spike		46° 08.619' N	110° 34.883' W	
Drop Point			46° 18.145' N	110° 37.828' W	
Drop Point			46° 11.071' N	110° 24.318' W	
Drop Point			46° 11.000' N	110° 24.339' W	
Drop Point		Small pond created by fire lines. Can dip without interference of surface.	46° 11.000' N	110° 24.339' W	
Drop Point	1	Drop Point 1	46° 12.452' N	110° 11.550' W	
Drop Point	7		46° 09.748' N	110° 36.470' W	
Drop Point	8		46° 09.892' N	110° 36.250' W	
Drop Point			46° 12.000' N	110° 33.645' W	
Helibase		Adjacent to sheriff outpost	46° 07.257' N	110° 28.064' W	
Helibase			46° 10.753' N	110° 12.945' W	
Helibase		Adjacent to canal on West side, could be used by cattle.	46° 10.016' N	110° 28.286' W	
Helibase		added per air ops	46° 11.083' N	110° 25.935' W	
Helibase		Added per air ops	46° 11.169' N	110° 24.293' W	
Internet Access			46° 08.892' N	110° 36.250' W	
Medical		unapproved medic site, noted by division	46° 11.233' N	110° 24.188' W	
Medical			46° 09.733' N	110° 24.117' W	
Repeater	CHD 4		46° 07.104' N	110° 23.381' W	
Water Source			46° 11.077' N	110° 23.878' W	
Water Source			46° 11.190' N	110° 22.650' W	
Water Source			46° 09.903' N	110° 22.489' W	
Water Source			46° 10.833' N	110° 21.407' W	
Water Source			46° 10.949' N	110° 21.364' W	
Water Source		middle fork dammed up.	46° 10.925' N	110° 13.117' W	
Water Source		pushed up by dike	46° 11.805' N	110° 14.731' W	
Water Source			46° 11.468' N	110° 13.760' W	
Water Source			46° 11.203' N	110° 14.500' W	
Water Source		1" well line on dike rises, powered by Plank 7	46° 11.380' N	110° 25.370' W	
Water Source		Trash pump at stream base as structure good for engine fill.	46° 12.998' N	110° 31.819' W	

