

Pilot Map

Balsinger Fire MT-HLF-5079

08/13 Day
Appx 8,614 ac at
8/08/2021 2344



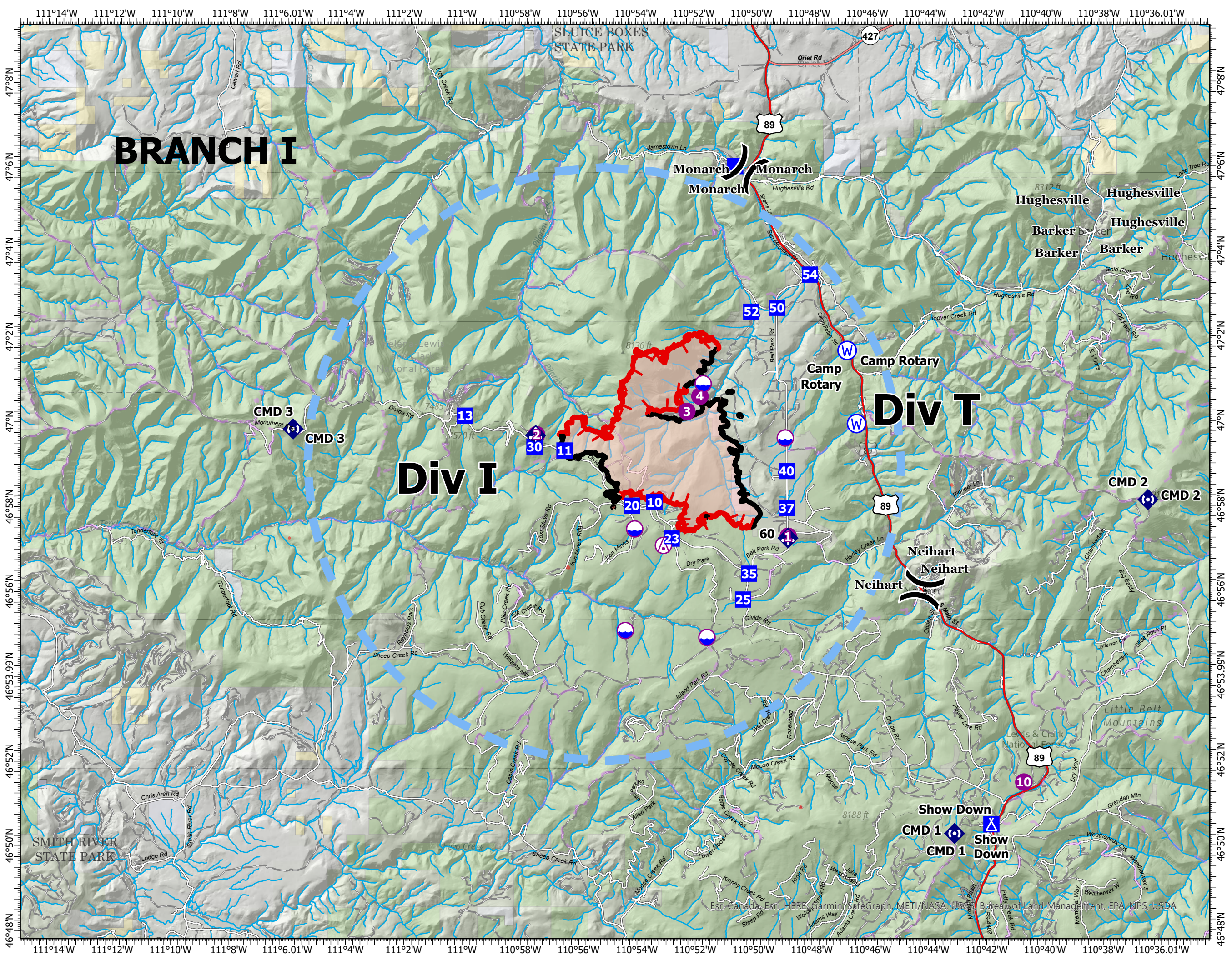
- Aerial Hazard
- Dip Site
- Helispot
- Division Break
- Drop Point
- Camp
- Mobile Weather Unit
- Repeater
- Water Source
- Temporary Flight Restriction
- Fire Edge
- Contained Line
- Trails
- State Public Lands
- Other State Lands
- Bureau of Land Management Lands
- Helena-Lewis and Clark National Forest
- Wildfire Daily Fire Perimeter
- TNM Derived Names - Civil
- TNM Derived Names - Populated Place
- TNM Derived Names - Civil
- TNM Derived Names - Populated Place



0 2 Miles

SA Red Team
8/12/2021 2138

North American 1983 Datum. LatLong Grid



FC Point Type	Label	Comments	Latitude WGS84 DDM	Longitude WGS84 DDM	Elevation (Feet)
Aerial Hazard		150' Tower	46° 57.100' N	110° 53.071' W	
Camp	Show Down		N46° 50.50565703'	W110° 41.82422776'	
Dip Site			N46° 59.62715782'	W110° 48.86856076'	
Dip Site			N46° 55.09452366'	W110° 54.38711368'	
Dip Site		Onion Park Pumpkin Dip Site - (2)6,000 gallon pumpkins	N46° 54.92985911'	W110° 51.57859722'	
Dip Site		Iron Mines Dip (2) 6,000 gallon pumpkins	N46° 57.49012490'	W110° 54.05947183'	
Dip Site		Large pumpkin	N47° 00.90956260'	W110° 51.69369428'	
Drop Point	10		N46° 58.11644894'	W110° 53.37825289'	
Drop Point	11	Drop Point 11, Balsinger trail parking area. Good parking area in the black, with cell phone reception.	N46° 59.33990550'	W110° 56.47257105'	
Drop Point	13	Drop point 10	N47° 00.16224765'	W110° 59.89356223'	
Drop Point	20		N46° 58.03786546'	W110° 54.15659543'	
Drop Point	22	DP 22, wide "pullout" area at hair pin turn, limited parking. Weak cell phone reception.	N46° 58.11763967'	W110° 53.37917272'	
Drop Point	23	DP 23, also a med size safety zone is S of DP.	N46° 57.26131437'	W110° 52.78804294'	
Drop Point	25	Drop point 25, per lead READ keep all vehicles out of large park, or "meadow" SW of DP due to rare plant and many arch sites found in meadow.	N46° 55.82081816'	W110° 50.33748247'	
Drop Point	30		N46° 59.42697070'	W110° 57.50530666'	
Drop Point	35		N46° 56.43090728'	W110° 50.12438683'	
Drop Point	37		N46° 57.97121052'	W110° 48.82544107'	
Drop Point	40		N46° 58.84740589'	W110° 48.82375367'	
Drop Point	50	Label as DP50	47° 02.697' N	110° 49.143' W	
Drop Point	52	New drop point	N47° 02.60565679'	W110° 50.03038792'	
Drop Point	54	Label as DP54	47° 03.477' N	110° 48.003' W	
Drop Point	55	Potential DP 55	47° 06.037' N	110° 50.572' W	
Helispot	1	Fence West Side	N46° 57.30740577'	W110° 48.77775335'	7012
Helispot	10		N46° 51.49740603'	W110° 40.70375042'	
Helispot	2		N46° 59.71240514'	W110° 57.43575575'	7500
Helispot	3		N47° 00.25640570'	W110° 52.25575474'	5883
Helispot	4		N47° 00.61540580'	W110° 51.80475473'	5779
Repeater	CMD 1	Porphyry Peak	N46° 50.29340570'	W110° 43.08975069'	
Repeater	CMD 2	Big Baldy	N46° 58.14440708'	W110° 36.39275083'	
Repeater	CMD 3	Monument Peak	N46° 59.84540437'	W111° 05.81375761'	
Water Source		Gravity sock for sprinkler system around Barn and Tree Cooler	N46° 59.96258570'	W110° 46.41665123'	
Water Source	Camp Rotary		N47° 01.68626007'	W110° 46.73213559'	