

Balsinger

Transportation Map

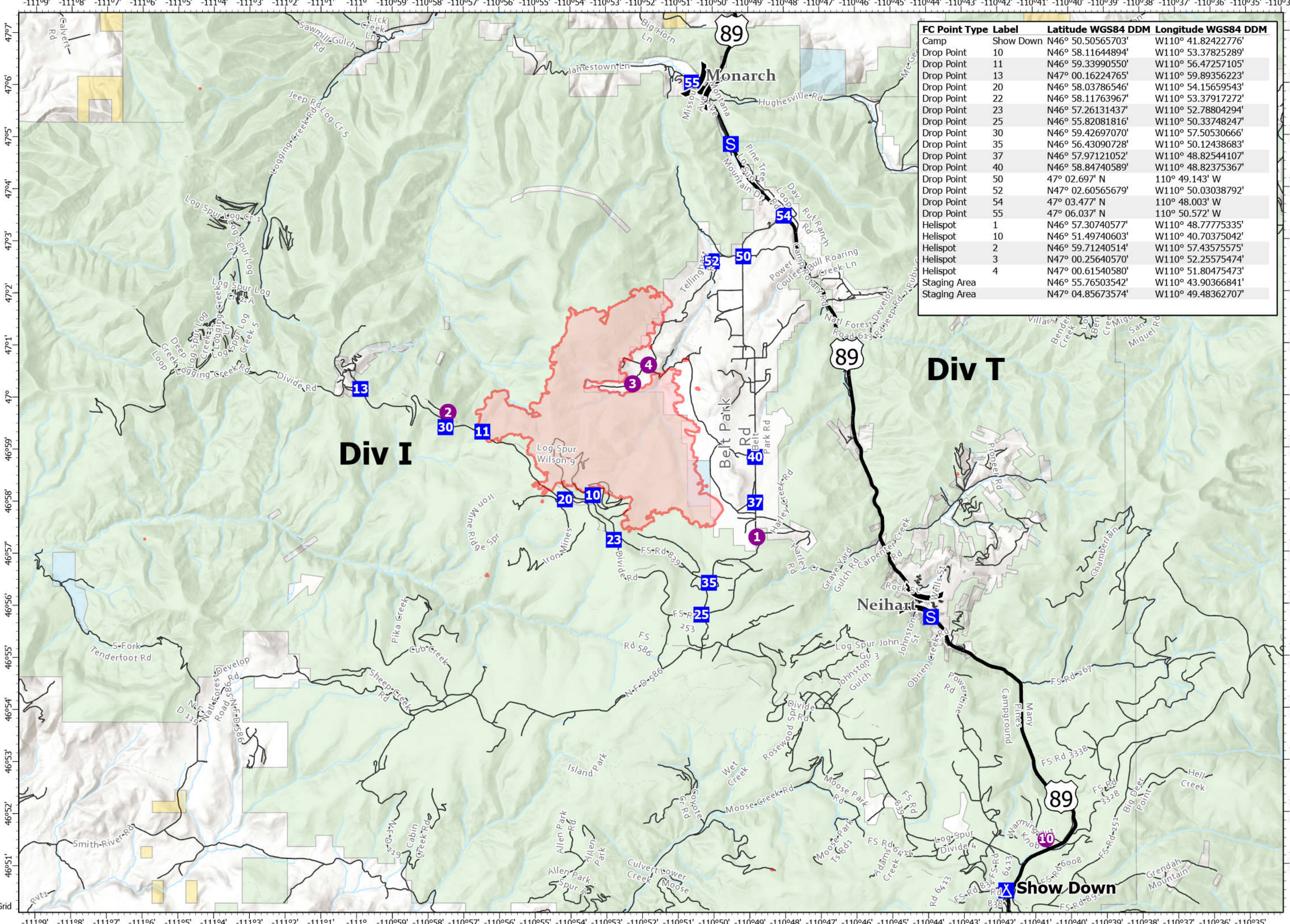
MT-HLF-005079



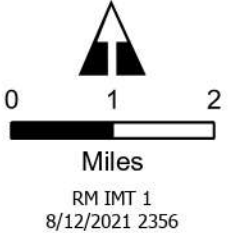
Operational Shift:
08/13 Day

8,614 Acres:
08/08/21 @ 2344

- Helispot
- ⌘ Division Break
- Drop Point
- ▲ Camp
- S Staging Area
- Wildfire Daily Fire Perimeter
- Cities and Towns Merge
- Major Road
- Local Road
- 4WD
- Local Government
- State Government
- US Bureau of Land Management
- US Bureau of Reclamation
- US Dept of Agriculture
- US Dept of Defense
- US Fish and Wildlife Service
- US Forest Service
- Other US Government



FC Point Type	Label	Latitude WGS84 DDM	Longitude WGS84 DDM
Camp	Show Down	N46° 50.50565703'	W110° 41.82422776'
Drop Point	10	N46° 58.11644894'	W110° 53.37825289'
Drop Point	11	N46° 59.33990550'	W110° 56.47257105'
Drop Point	13	N47° 00.16224765'	W110° 59.89356223'
Drop Point	20	N46° 58.03786546'	W110° 54.15659543'
Drop Point	22	N46° 58.11763967'	W110° 53.37917272'
Drop Point	23	N46° 57.26131437'	W110° 52.78804294'
Drop Point	25	N46° 55.82081816'	W110° 50.33748247'
Drop Point	30	N46° 59.42697070'	W110° 57.50530666'
Drop Point	35	N46° 56.43090728'	W110° 50.12438683'
Drop Point	37	N46° 57.97121052'	W110° 48.82544107'
Drop Point	40	N46° 58.84740589'	W110° 48.82375367'
Drop Point	50	47° 02.697' N	110° 49.143' W
Drop Point	52	N47° 02.60565679'	W110° 50.03038792'
Drop Point	54	47° 03.477' N	110° 48.003' W
Drop Point	55	47° 06.037' N	110° 50.572' W
Helispot	1	N46° 57.30740577'	W110° 48.77775335'
Helispot	10	N46° 51.49740603'	W110° 40.70375042'
Helispot	2	N46° 59.71240514'	W110° 57.43575575'
Helispot	3	N47° 00.25640570'	W110° 52.25575474'
Helispot	4	N47° 00.61540580'	W110° 51.80475473'
Staging Area		N46° 55.76503542'	W110° 43.90366841'
Staging Area		N47° 04.85673574'	W110° 49.48362707'



North American 1983 Datum. LatLong Grid