

# Air Operations All Fires Overview

Operational Period 8/16/2021

American Fork - MT-HLF-005087

20,187 Acres @ 2204 8/14

Divide Complex: Balsinger MT-HLF-005079

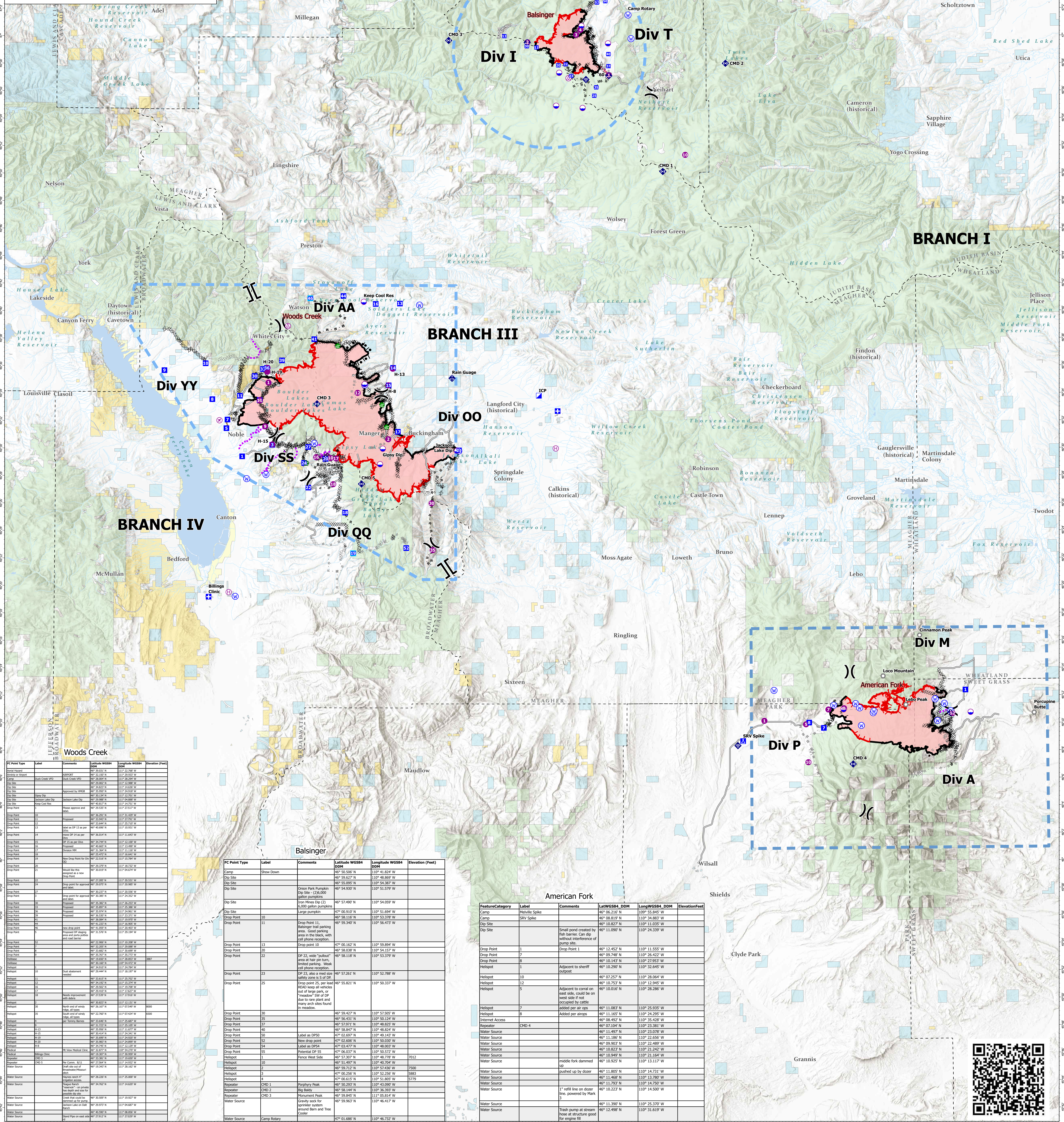
8,614 Acres @ 2344 8/8

Woods Creek - MT-HLF-000258

55,476 Acres @0003 8/15



	Aerial Hazard		Planned Dozer Line
	Airstrip or Airport		Planned Mixed Construction Line
	Dip Site		Planned Road as Line
	Helispot		Planned Secondary Line
	Helibase		Access or Improved Road
	Division Break		Other
	Branch Break		Road Repair
	Medical		Route
	Drop Point		Temporary Flight Restriction
	Water Development or Draft Site		Fire Edge
	Mobile Weather Unit		Contained Line
	Internet Access		Wildfire Daily Fire Perimeter
	Repeater		Stream
	Water Source		Ponds/Lakes
	Completed Burnout		County
	Completed Fuel Break		Land Ownership
	Completed Hand Line		Local Government
	Completed Mixed Construction Line		State Government
	Completed Flow Line		US Bureau of Land Management
	Completed Road as Line		US Bureau of Reclamation
			US Dept of Agriculture
			US Dept of Defense
			US Fish and Wildlife Service
			US Forest Service
			Other US Government



IC Point Type	Label	Comments	Latitude WGS84 DDM	Longitude WGS84 DDM	Elevation (Feet)
Aerial Hazard	1001021	1001021	49° 21.812' N	110° 22.268' W	
Camp	1002000	1002000	49° 21.812' N	110° 22.268' W	
Drop Point	1003000	1003000	49° 21.812' N	110° 22.268' W	

IC Point Type	Label	Comments	Latitude WGS84 DDM	Longitude WGS84 DDM	Elevation (Feet)
Drop Point	1	Drop Point 1	49° 06.162' N	110° 59.894' W	
Drop Point	2	Drop Point 2	49° 06.162' N	110° 59.894' W	
Drop Point	3	Drop Point 3	49° 06.162' N	110° 59.894' W	

Feature Category	Label	Comments	LatWGS84 DDM	LongWGS84 DDM	Elevation Feet
Camp	Mobile Site	Mobile Site	49° 06.218' N	110° 55.845' W	
Drop Point	SKV Spike	SKV Spike	49° 08.819' N	110° 34.887' W	
Drop Point	10	Drop Point 10	49° 08.819' N	110° 34.887' W	

