

# Balsinger Fire

## MT-HLF-5079

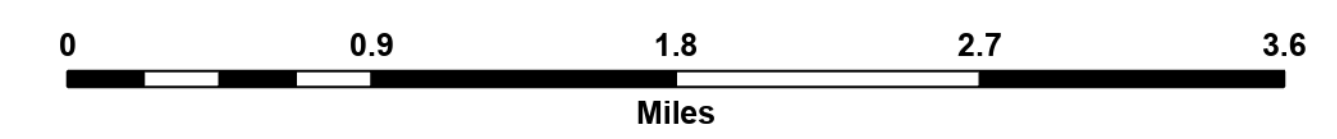
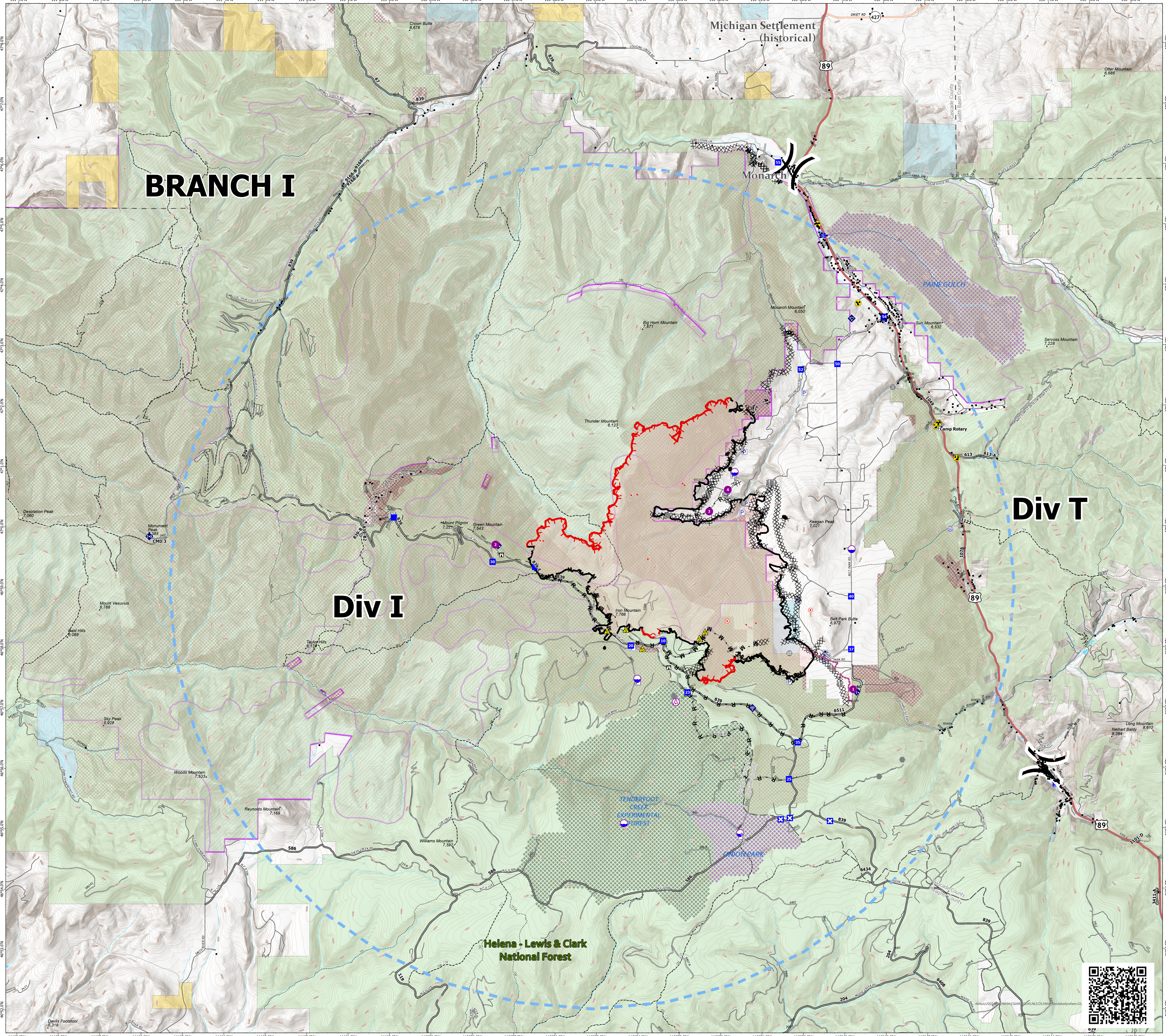
### Operations Map

8,614 Acres @ 2221, 8/12/21

Operational Shift  
8/17/2021



- Structure
- ⊗ Aerial Hazard
- ⊙ Dip Site
- Helispot
- ⌵ Division Break
- Drop Point
- ⊠ Closure
- ⊠ Staging Area
- ⊠ Lookout
- Hot Spot - Spot Fire
- Value at Risk
- Other
- Gate
- Fire Station
- Bridge
- Mobile Weather Unit
- Internet Access
- Repeater
- Safety Zone
- Hazard
- Water Source
- ⊠ Completed Burnout
- ⊠ Completed Dozer Line
- ⊠ Completed Fuel Break
- ⊠ Completed Hand Line
- ⊠ Completed Mixed Construction Line
- ⊠ Completed Plow Line
- ⊠ Completed Road as Line
- ⊠ Planned Fuel Break
- ⊠ Planned Road as Line
- Access or Improved Road
- Retardant Drop
- Temporary Flight Restriction
- Fire Edge
- Contained Line
- Streams
- Wildfire Daily Fire Perimeter
- County Boundary
- Waterbody
- Local Government
- State Government
- US Bureau of Land Management
- US Dept of Defense
- US Forest Service
- Research Natural Areas
- Tenderfoot Experimental Forest
- Inventoried Roadless Areas
- Range Allotments
- Pastures
- Roads
  - US Route
  - State Route
  - Local Road
  - 4WD
- 20210816 2004 Isolated Heat Sources
- 20210816 2004 Intense Heat
- FS Road Type
  - Improved Road
  - Unimproved Road
  - Closed Road
  - Trails
  - Motorized Trails



RMIMT Type 1 GIS  
Date Exported: 8/17/2021 6:57 AM  
North American 1983 Datum, LatLong Grid