

Balsinger Fire

MT-HLF-5079

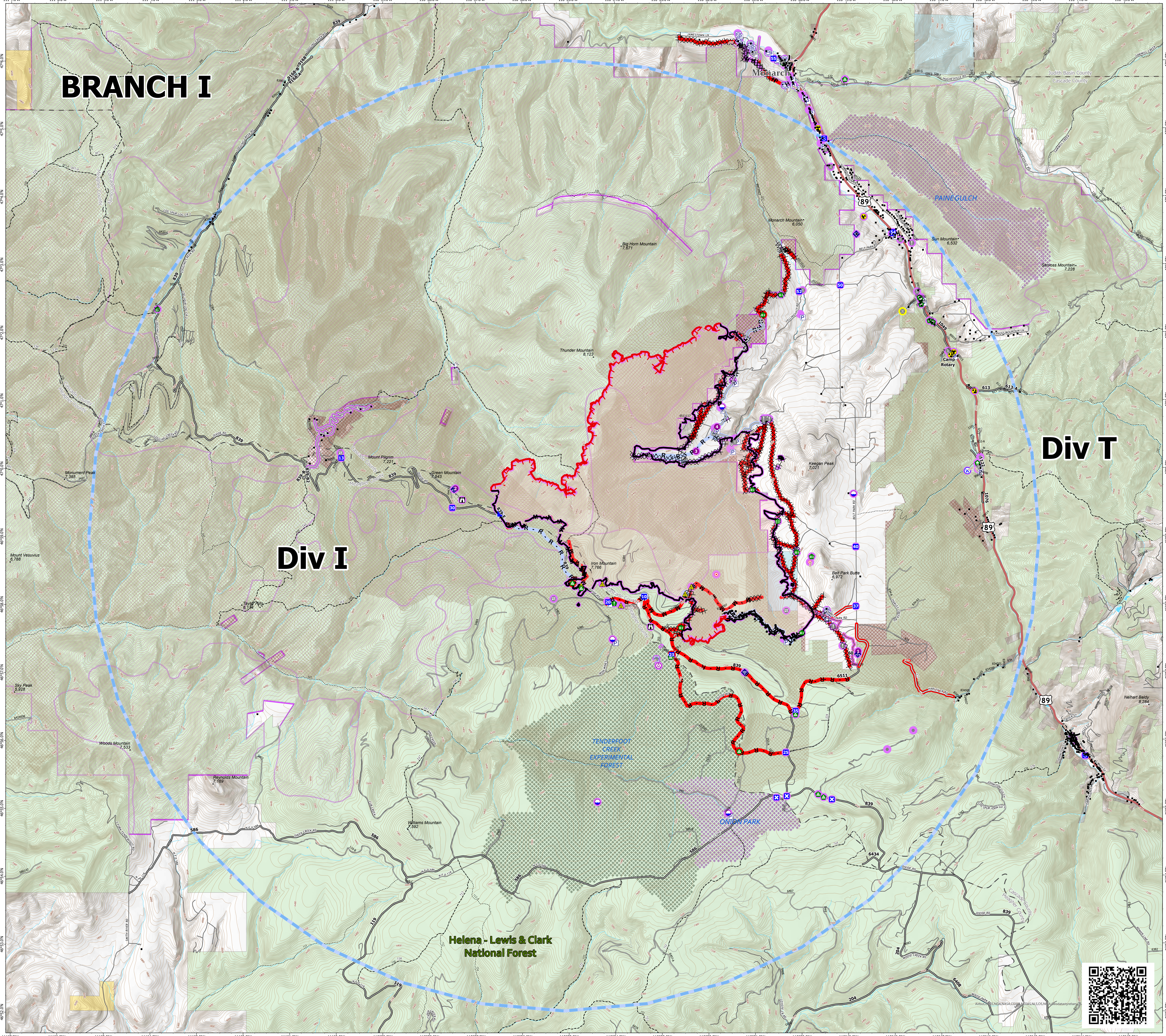
Repair Map

8,614 Acres @ 2221, 8/18/21

Operational Shift
8/18/2021



- Structure
 - Event Point
 - Air Operations
 - Aerial Hazard
 - Dip Site
 - Helispot
 - Assignment Breaks
 - Division Break
 - Logistics
 - Drop Point
 - Closure
 - Staging Area
 - Operations
 - Lookout
 - Fire
 - Hot Spot - Spot Fire
 - Reference
 - Value at Risk
 - Other
 - Fire Station
 - Bridge
 - Repair
 - Water Development or Draft Site
 - Structure Wrap
 - Stream Crossing
 - Resource Location
 - Landing or Log Deck
 - Fence - Cut/Damaged
 - Communications
 - Mobile Weather Unit
 - Internet Access
 - Safety
 - Safety Zone
 - Hazard
 - Water
 - Water Source
 - Event Line
 - Ops Completed
 - Completed Burnout
 - Completed Dozer Line
 - Completed Fuel Break
 - Completed Hand Line
 - Completed Mixed Construction Line
 - Completed Plow Line
 - Completed Road as Line
 - Ops Planned
 - Planned Fuel Break
 - Planned Road as Line
 - Reference
 - Access or Improved Road
- Air Ops
 - Retardant Drop
 - Temporary Flight Restriction
 - Fire Perimeter
 - Fire Edge
 - Contained Line
 - Accountable Property
 - Accountable Property
 - Pump
 - Water Tank
 - Repair Status Accountable Property
 - Unknown
 - Repair Status Point
 - In Progress
 - Repair Needed
 - No Repair Needed
 - Other - See Comments
 - Unknown
 - Repair Status Line
 - Repair Needed
 - No Repair Needed
 - Other - See Comments
 - Unknown
 - Event Polygon
 - Polygon Type
 - Wildfire Daily Fire Perimeter
 - Streams
 - County Boundary
 - Waterbody
 - Local Government
 - State Government
 - US Bureau of Land Management
 - US Dept of Defense
 - US Forest Service
 - Research Natural Areas
 - Tenderfoot Experimental Forest
 - Inventoried Roadless Areas
 - Range Allotments
 - Pastures
 - Roads
 - US Route
 - Local Road
 - 4WD
 - Improved Road
 - Unimproved Road
 - Closed Road
 - Trails
 - Motorized Trails



BRANCH I

Div I

Div T

Helena - Lewis & Clark
National Forest

