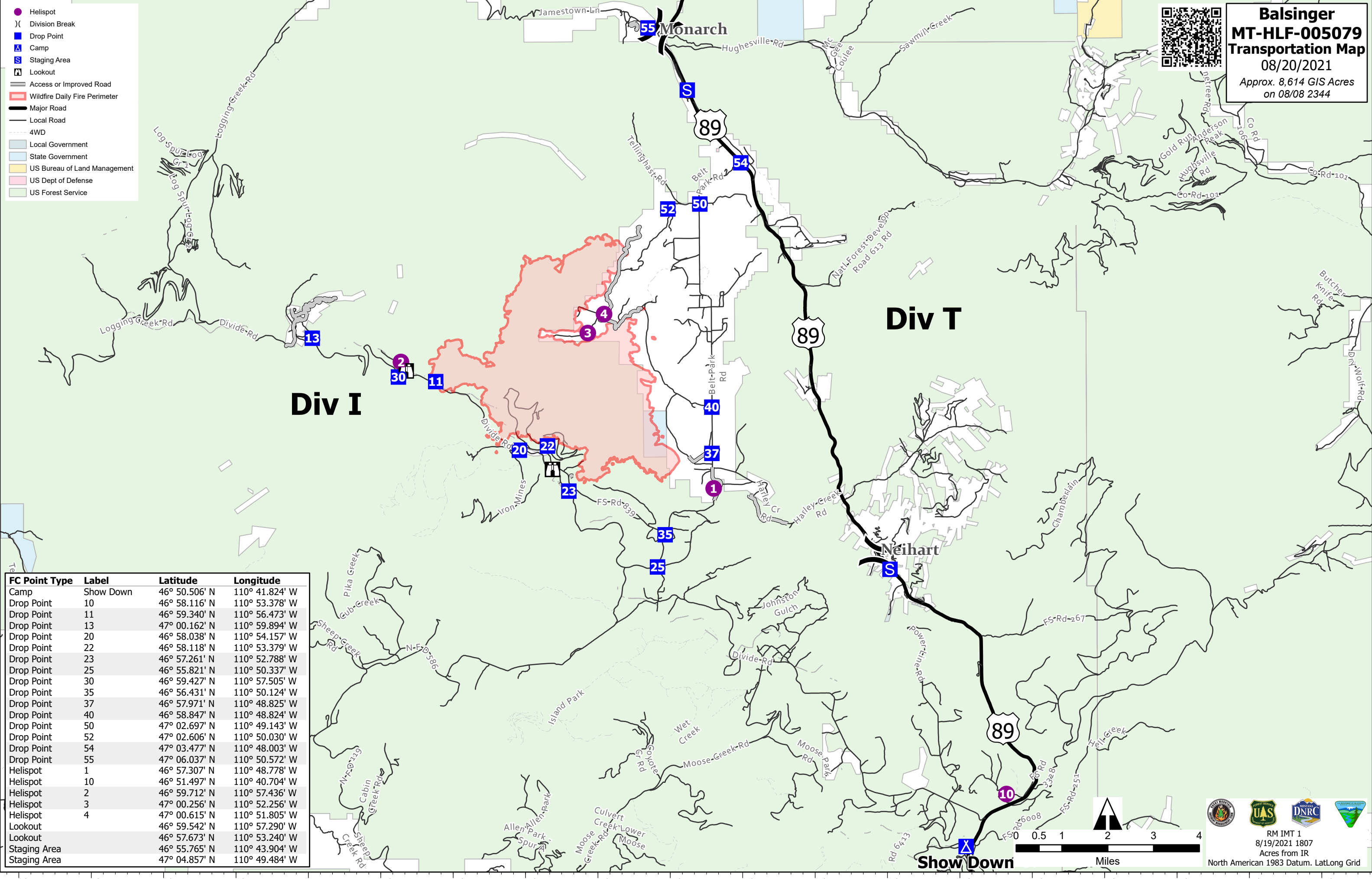


- Helispot
-) Division Break
- Drop Point
- X Camp
- S Staging Area
- ⬜ Lookout
- Access or Improved Road
- Wildfire Daily Fire Perimeter
- Major Road
- Local Road
- 4WD
- Local Government
- State Government
- US Bureau of Land Management
- US Dept of Defense
- US Forest Service



| FC Point Type | Label | Latitude | Longitude |
|---------------|-----------|---------------|----------------|
| Camp | Show Down | 46° 50.506' N | 110° 41.824' W |
| Drop Point | 10 | 46° 58.116' N | 110° 53.378' W |
| Drop Point | 11 | 46° 59.340' N | 110° 56.473' W |
| Drop Point | 13 | 47° 00.162' N | 110° 59.894' W |
| Drop Point | 20 | 46° 58.038' N | 110° 54.157' W |
| Drop Point | 22 | 46° 58.118' N | 110° 53.379' W |
| Drop Point | 23 | 46° 57.261' N | 110° 52.788' W |
| Drop Point | 25 | 46° 55.821' N | 110° 50.337' W |
| Drop Point | 30 | 46° 59.427' N | 110° 57.505' W |
| Drop Point | 35 | 46° 56.431' N | 110° 50.124' W |
| Drop Point | 37 | 46° 57.971' N | 110° 48.825' W |
| Drop Point | 40 | 46° 58.847' N | 110° 48.824' W |
| Drop Point | 50 | 47° 02.697' N | 110° 49.143' W |
| Drop Point | 52 | 47° 02.606' N | 110° 50.030' W |
| Drop Point | 54 | 47° 03.477' N | 110° 48.003' W |
| Drop Point | 55 | 47° 06.037' N | 110° 50.572' W |
| Helispot | 1 | 46° 57.307' N | 110° 48.778' W |
| Helispot | 10 | 46° 51.497' N | 110° 40.704' W |
| Helispot | 2 | 46° 59.712' N | 110° 57.436' W |
| Helispot | 3 | 47° 00.256' N | 110° 52.256' W |
| Helispot | 4 | 47° 00.615' N | 110° 51.805' W |
| Lookout | | 46° 59.542' N | 110° 57.290' W |
| Lookout | | 46° 57.673' N | 110° 53.240' W |
| Staging Area | | 46° 55.765' N | 110° 43.904' W |
| Staging Area | | 47° 04.857' N | 110° 49.484' W |

