

# Air Operations All Fires Overview

Operational Period 8/21/2021

American Fork - MT-HLF-005087

21,876 Acres @ 1130 8/17

Divide Complex: Balsinger MT-HLF-005079

8,614 Acres @ 2344 8/8

Woods Creek - MT-HLF-000258

55,834 Acres @ 1938 8/16



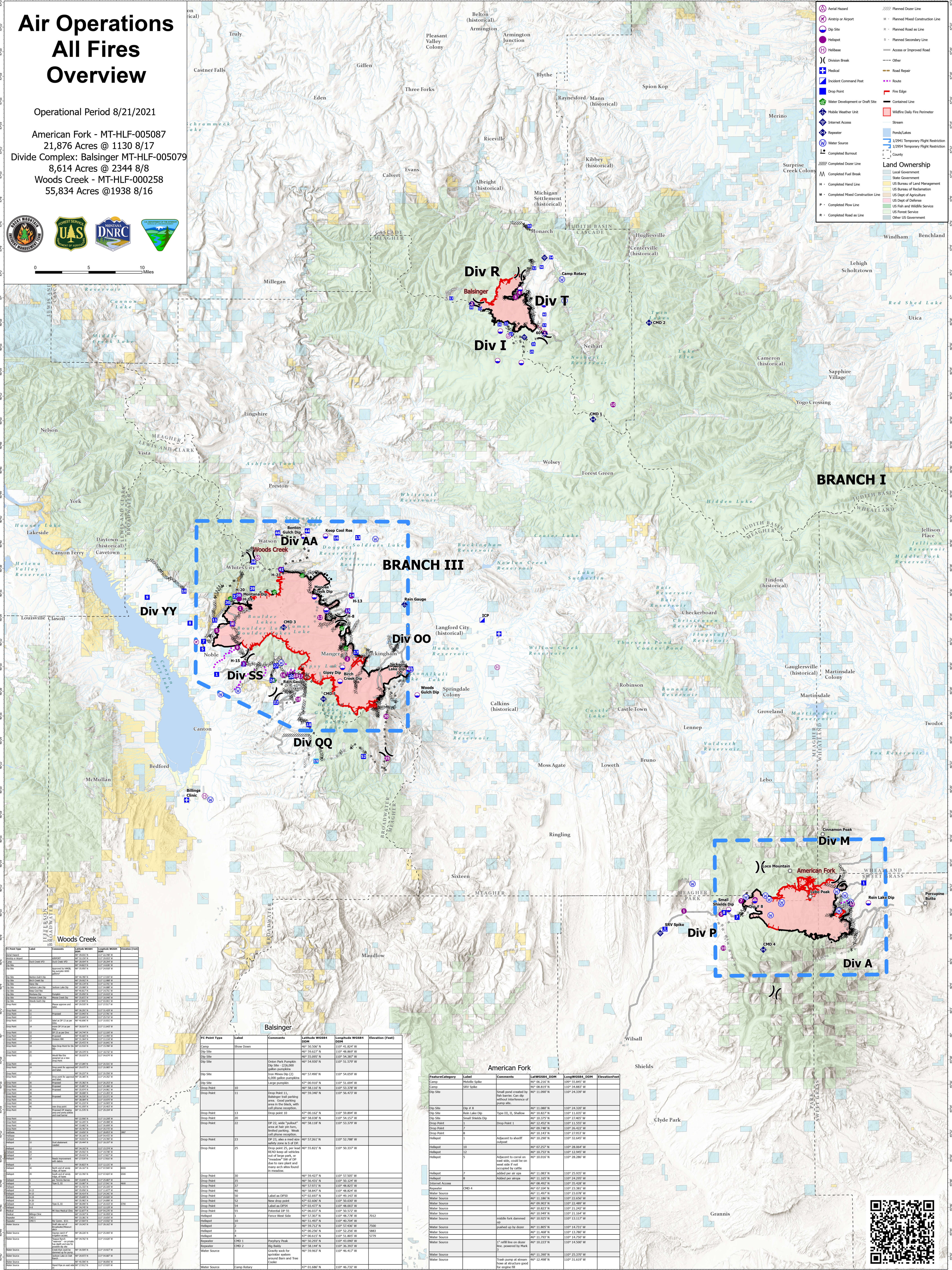
0 5 10 Miles

**Legend**

- Aerial Hazard
- Airstrip or Airport
- Dip Site
- Helipad
- Division Break
- Medical
- Incident Command Post
- Drop Point
- Water Development or Draft Site
- Mobile Weather Unit
- Internet Access
- Repeater
- Water Source
- Completed Burnout
- Completed Doser Line
- Completed Fuel Break
- H - Completed Hand Line
- M - Completed Mixed Construction Line
- P - Completed Flow Line
- R - Completed Road as Line
- Planned Doser Line
- M - Planned Mixed Construction Line
- R - Planned Road as Line
- S - Planned Secondary Line
- Access or Improved Road
- Other
- Road Repair
- Route
- Fire Edge
- Contained Line
- Wildfire Daily Fire Perimeter
- Stream
- Ponds/Lakes
- 1/2941 Temporary Flight Restriction
- 1/2954 Temporary Flight Restriction
- County

**Land Ownership**

- Local Government
- State Government
- US Bureau of Land Management
- US Bureau of Reclamation
- US Dept. of Agriculture
- US Dept. of Defense
- US Fish and Wildlife Service
- US Forest Service
- Other US Government



FC Point Type	Label	Comments	Latitude WGS84 DDM	Longitude WGS84 DDM	Elevation (Feet)
FC Point	30	Drop point 30	46° 52.300' N	110° 51.824' W	7900
FC Point	31	Drop point 31	46° 52.300' N	110° 51.824' W	7900
FC Point	32	Drop point 32	46° 52.300' N	110° 51.824' W	7900
FC Point	33	Drop point 33	46° 52.300' N	110° 51.824' W	7900
FC Point	34	Drop point 34	46° 52.300' N	110° 51.824' W	7900
FC Point	35	Drop point 35	46° 52.300' N	110° 51.824' W	7900
FC Point	36	Drop point 36	46° 52.300' N	110° 51.824' W	7900
FC Point	37	Drop point 37	46° 52.300' N	110° 51.824' W	7900
FC Point	38	Drop point 38	46° 52.300' N	110° 51.824' W	7900
FC Point	39	Drop point 39	46° 52.300' N	110° 51.824' W	7900
FC Point	40	Drop point 40	46° 52.300' N	110° 51.824' W	7900
FC Point	41	Drop point 41	46° 52.300' N	110° 51.824' W	7900
FC Point	42	Drop point 42	46° 52.300' N	110° 51.824' W	7900
FC Point	43	Drop point 43	46° 52.300' N	110° 51.824' W	7900
FC Point	44	Drop point 44	46° 52.300' N	110° 51.824' W	7900
FC Point	45	Drop point 45	46° 52.300' N	110° 51.824' W	7900
FC Point	46	Drop point 46	46° 52.300' N	110° 51.824' W	7900
FC Point	47	Drop point 47	46° 52.300' N	110° 51.824' W	7900
FC Point	48	Drop point 48	46° 52.300' N	110° 51.824' W	7900
FC Point	49	Drop point 49	46° 52.300' N	110° 51.824' W	7900
FC Point	50	Drop point 50	46° 52.300' N	110° 51.824' W	7900
FC Point	51	Drop point 51	46° 52.300' N	110° 51.824' W	7900
FC Point	52	Drop point 52	46° 52.300' N	110° 51.824' W	7900
FC Point	53	Drop point 53	46° 52.300' N	110° 51.824' W	7900
FC Point	54	Drop point 54	46° 52.300' N	110° 51.824' W	7900
FC Point	55	Drop point 55	46° 52.300' N	110° 51.824' W	7900
FC Point	56	Drop point 56	46° 52.300' N	110° 51.824' W	7900
FC Point	57	Drop point 57	46° 52.300' N	110° 51.824' W	7900
FC Point	58	Drop point 58	46° 52.300' N	110° 51.824' W	7900
FC Point	59	Drop point 59	46° 52.300' N	110° 51.824' W	7900
FC Point	60	Drop point 60	46° 52.300' N	110° 51.824' W	7900
FC Point	61	Drop point 61	46° 52.300' N	110° 51.824' W	7900
FC Point	62	Drop point 62	46° 52.300' N	110° 51.824' W	7900
FC Point	63	Drop point 63	46° 52.300' N	110° 51.824' W	7900
FC Point	64	Drop point 64	46° 52.300' N	110° 51.824' W	7900
FC Point	65	Drop point 65	46° 52.300' N	110° 51.824' W	7900
FC Point	66	Drop point 66	46° 52.300' N	110° 51.824' W	7900
FC Point	67	Drop point 67	46° 52.300' N	110° 51.824' W	7900
FC Point	68	Drop point 68	46° 52.300' N	110° 51.824' W	7900
FC Point	69	Drop point 69	46° 52.300' N	110° 51.824' W	7900
FC Point	70	Drop point 70	46° 52.300' N	110° 51.824' W	7900
FC Point	71	Drop point 71	46° 52.300' N	110° 51.824' W	7900
FC Point	72	Drop point 72	46° 52.300' N	110° 51.824' W	7900
FC Point	73	Drop point 73	46° 52.300' N	110° 51.824' W	7900
FC Point	74	Drop point 74	46° 52.300' N	110° 51.824' W	7900
FC Point	75	Drop point 75	46° 52.300' N	110° 51.824' W	7900
FC Point	76	Drop point 76	46° 52.300' N	110° 51.824' W	7900
FC Point	77	Drop point 77	46° 52.300' N	110° 51.824' W	7900
FC Point	78	Drop point 78	46° 52.300' N	110° 51.824' W	7900
FC Point	79	Drop point 79	46° 52.300' N	110° 51.824' W	7900
FC Point	80	Drop point 80	46° 52.300' N	110° 51.824' W	7900
FC Point	81	Drop point 81	46° 52.300' N	110° 51.824' W	7900
FC Point	82	Drop point 82	46° 52.300' N	110° 51.824' W	7900
FC Point	83	Drop point 83	46° 52.300' N	110° 51.824' W	7900
FC Point	84	Drop point 84	46° 52.300' N	110° 51.824' W	7900
FC Point	85	Drop point 85	46° 52.300' N	110° 51.824' W	7900
FC Point	86	Drop point 86	46° 52.300' N	110° 51.824' W	7900
FC Point	87	Drop point 87	46° 52.300' N	110° 51.824' W	7900
FC Point	88	Drop point 88	46° 52.300' N	110° 51.824' W	7900
FC Point	89	Drop point 89	46° 52.300' N	110° 51.824' W	7900
FC Point	90	Drop point 90	46° 52.300' N	110° 51.824' W	7900
FC Point	91	Drop point 91	46° 52.300' N	110° 51.824' W	7900
FC Point	92	Drop point 92	46° 52.300' N	110° 51.824' W	7900
FC Point	93	Drop point 93	46° 52.300' N	110° 51.824' W	7900
FC Point	94	Drop point 94	46° 52.300' N	110° 51.824' W	7900
FC Point	95	Drop point 95	46° 52.300' N	110° 51.824' W	7900
FC Point	96	Drop point 96	46° 52.300' N	110° 51.824' W	7900
FC Point	97	Drop point 97	46° 52.300' N	110° 51.824' W	7900
FC Point	98	Drop point 98	46° 52.300' N	110° 51.824' W	7900
FC Point	99	Drop point 99	46° 52.300' N	110° 51.824' W	7900
FC Point	100	Drop point 100	46° 52.300' N	110° 51.824' W	7900

FC Point Type	Label	Comments	Latitude WGS84 DDM	Longitude WGS84 DDM	Elevation (Feet)
Camp	Show Doem		46° 52.260' N	110° 41.824' W	7900
Drop Point	10	Drop point 10	46° 52.022' N	110° 48.869' W	7900
Drop Point	11	Drop point 11	46° 52.022' N	110° 48.869' W	7900
Drop Point	12	Drop point 12	46° 52.022' N	110° 48.869' W	7900
Drop Point	13	Drop point 13	46° 52.022' N	110° 48.869' W	7900
Drop Point	14	Drop point 14	46° 52.022' N	110° 48.869' W	7900
Drop Point	15	Drop point 15	46° 52.022' N	110° 48.869' W	7900
Drop Point	16	Drop point 16	46° 52.022' N	110° 48.869' W	7900
Drop Point	17	Drop point 17	46° 52.022' N	110° 48.869' W	7900
Drop Point	18	Drop point 18	46° 52.022' N	110° 48.869' W	7900
Drop Point	19	Drop point 19	46° 52.022' N	110° 48.869' W	7900
Drop Point	20	Drop point 20	46° 52.022' N	110° 48.869' W	7900
Drop Point	21	Drop point 21	46° 52.022' N	110° 48.869' W	7900
Drop Point	22	Drop point 22	46° 52.022' N	110° 48.869' W	7900
Drop Point	23	Drop point 23	46° 52.022' N	110° 48.869' W	7900
Drop Point	24	Drop point 24	46° 52.022' N	110° 48.869' W	7900
Drop Point	25	Drop point 25	46° 52.022' N	110° 48.869' W	7900
Drop Point	26	Drop point 26	46° 52.022' N	110° 48.869' W	7900
Drop Point	27	Drop point 27	46° 52.022' N	110° 48.869' W	7900
Drop Point	28	Drop point 28	46° 52.022' N	110° 48.869' W	7900
Drop Point	29	Drop point 29	46° 52.022' N	110° 48.869' W	7900
Drop Point	30	Drop point 30	46° 52.022' N	110° 48.869' W	7900
Drop Point	31	Drop point 31	46° 52.022' N	110° 48.869' W	7900
Drop Point	32	Drop point 32	46° 52.022' N	110° 48.869' W	7900
Drop Point	33	Drop point 33	46° 52.022' N	110° 48.869' W	7900
Drop Point	34	Drop point 34	46° 52.022' N	110° 48.869' W	7900
Drop Point	35	Drop point 35	46° 52.022' N	110° 48.869' W	7900
Drop Point	36	Drop point 36	46° 52.022' N	110° 48.869' W	7900
Drop Point	37	Drop point 37	46° 52.022' N	110° 48.869' W	7900
Drop Point	38	Drop point 38	46° 52.022' N	110° 48.869' W	7900
Drop Point	39	Drop point 39	46° 52.022' N	110° 48.869' W	7900
Drop Point	40	Drop point 40	46° 52.022' N	110° 48.869' W	7900
Drop Point	41	Drop point 41	46° 52.022' N	110° 48.869' W	7900
Drop Point	42	Drop point 42	46° 52.022' N	110° 48.869' W	7900
Drop Point	43	Drop point 43	46° 52.022' N	110° 48.869' W	7900
Drop Point	44	Drop point 44	46° 52.022' N	110° 48.869' W	7900
Drop Point	45	Drop point 45	46° 52.022' N	110° 48.869' W	7900
Drop Point	46	Drop point 46	46° 52.022' N	110° 48.869' W	7900
Drop Point	47	Drop point 47	46° 52.022' N	110° 48.869' W	7900
Drop Point	48	Drop point 48	46° 52.022' N	110° 48.869' W	7900
Drop Point	49	Drop point 49	46° 52.022' N	110° 48.869' W	7900
Drop Point	50	Drop point 50	46° 52.022' N	110° 48.869' W	7900
Drop Point	51	Drop point 51	46° 52.022' N	110° 48.869' W	7900
Drop Point	52	Drop point 52	46° 52.022' N	110° 48.869' W	7900
Drop Point	53	Drop point 53	46° 52.022' N	110° 48.869' W	7900
Drop Point	54	Drop point 54	46° 52.022' N	110° 48.869' W	7900
Drop Point	55	Drop point 55	46° 52.022' N	110° 48.869' W	7900
Drop Point	56	Drop point 56	46° 52.022' N	110° 48.869' W	7900
Drop Point	57	Drop point 57	46° 52.022' N	110° 48.869' W	7900
Drop Point	58	Drop point 58	46° 52.022' N	110° 48.869' W	7900
Drop Point	59	Drop point 59	46° 52.022' N	110° 48.869' W	7900
Drop Point	60	Drop point 60	46° 52.022' N	110° 48.869' W	7900
Drop Point	61	Drop point 61	46° 52.022' N	110° 48.869' W	7900
Drop Point	62	Drop point 62	46° 52.022' N	110° 48.869' W	7900
Drop Point	63	Drop point 63	46° 52.022' N	110° 48.869' W	7900
Drop Point	64	Drop point 64	46° 52.022' N	110° 48.869' W	7900
Drop Point	65	Drop point 65	46° 52.022' N	110° 48.869' W	7900
Drop Point	66	Drop point 66	46° 52.022' N	110° 48.869' W	7900
Drop Point	67	Drop point 67	46° 52.022' N	110° 48.869' W	7900
Drop Point	68	Drop point 68	46° 52.022' N	110° 48.869' W	7900
Drop Point	69	Drop point 69	46° 52.022' N	110° 48.869' W	7900
Drop Point	70	Drop point 70	46° 52.022' N	110° 48.869' W	7900
Drop Point	71	Drop point 71	46° 52.022' N	110° 48.869' W	7900
Drop Point	72	Drop point 72	46° 52.022' N	110° 48.869' W	7900
Drop Point	73	Drop point 73	46° 52.022' N	110° 48.869' W	7900
Drop Point	74	Drop point 74	46° 52.022' N	110°	