

Balsinger Fire MT-HLF-5079

Pilot Map

Approx 8,614 GIS Acres
@ 2344 8/8/2021

Operational Shift
8/21/2021



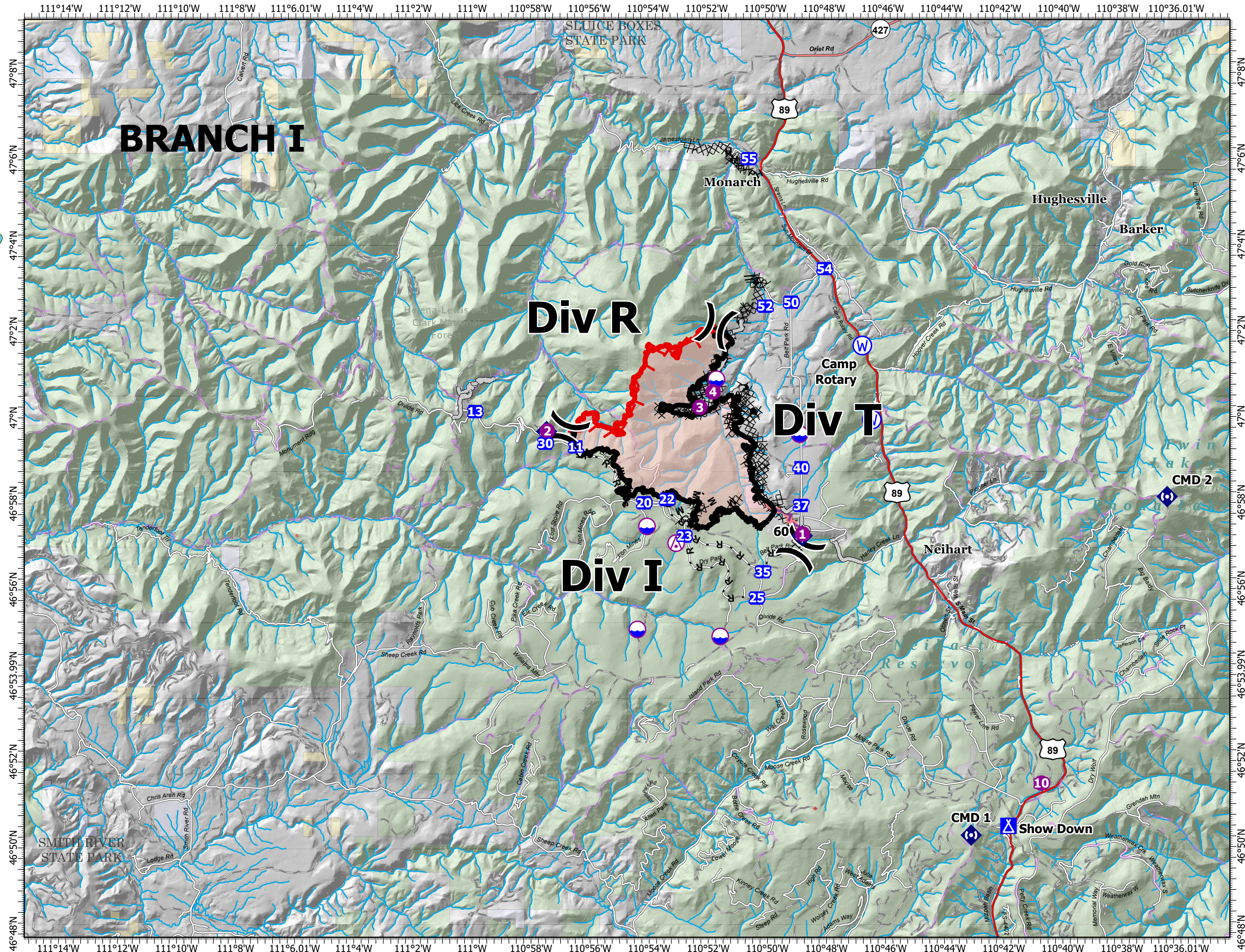
- Aerial Hazard
- Dip Site
- Helispot
- Division Break
- Drop Point
- Camp
- Mobile Weather Unit
- Repeater
- Water Source
- Completed Dozer Line
- Completed Fuel Break
- Completed Hand Line
- Completed Mixed Construction Line
- Completed Plow Line
- Completed Road as Line
- Planned Road as Line
- Access or Improved Road
- Retardant Drop
- Fire Edge
- Contained Line
- Wildfire Daily Fire Perimeter
- Primary Highway
- Secondary Highway
- Paved Roads
- Dirt (Not Paved)



0 2 Miles

RMMIT
8/20/2021 1935

North American 1983 Datum. LatLong Grid



FC Point Type	Label	Comments	Latitude WGS84 DDM	Longitude WGS84 DDM	Elevation (Feet)
Aerial Hazard		150' Tower	46° 57.100' N	110° 53.071' W	
Camp	Show Down		46° 50.506' N	110° 41.824' W	
Dip Site			46° 59.627' N	110° 48.869' W	
Dip Site			46° 55.095' N	110° 54.387' W	
Dip Site		Onion Park Pumpkin Dip Site - (2)6,000 gallon pumpkins	46° 54.930' N	110° 51.579' W	
Dip Site		Iron Mines Dip (2) 6,000 gallon pumpkins	46° 57.490' N	110° 54.059' W	
Dip Site		Large pumpkin	47° 00.910' N	110° 51.694' W	
Drop Point	10		46° 58.116' N	110° 53.378' W	
Drop Point	11	Drop Point 11, Balsinger trail parking area. Good parking area in the black, with cell phone reception.	46° 59.340' N	110° 56.473' W	
Drop Point	13	Drop point 10	47° 00.162' N	110° 59.894' W	
Drop Point	20		46° 58.038' N	110° 54.157' W	
Drop Point	22	DP 22, wide "pullout" area at hair pin turn, limited parking. Weak cell phone reception.	46° 58.118' N	110° 53.379' W	
Drop Point	23	DP 23, also a med size safety zone is S of DP.	46° 57.261' N	110° 52.788' W	
Drop Point	25	Drop point 25, per lead READ keep all vehicles out of large park, or "meadow" SW of DP due to rare plant and many arch sites found in meadow.	46° 55.821' N	110° 50.337' W	
Drop Point	30		46° 59.427' N	110° 57.505' W	
Drop Point	35		46° 56.431' N	110° 50.124' W	
Drop Point	37		46° 57.971' N	110° 48.825' W	
Drop Point	40		46° 58.847' N	110° 48.824' W	
Drop Point	50	Label as DP50	47° 02.697' N	110° 49.143' W	
Drop Point	52	New drop point	47° 02.606' N	110° 50.030' W	
Drop Point	54	Label as DP54	47° 03.477' N	110° 48.003' W	
Drop Point	55	Potential DP 55	47° 06.037' N	110° 50.572' W	
Helispot	1	Fence West Side	46° 57.307' N	110° 48.778' W	7012
Helispot	10		46° 51.497' N	110° 40.704' W	
Helispot	2		46° 59.712' N	110° 57.436' W	7500
Helispot	3		47° 00.256' N	110° 52.256' W	5883
Helispot	4		47° 00.615' N	110° 51.805' W	5779
Repeater	CMD 1	Porphyry Peak	46° 50.293' N	110° 43.090' W	
Repeater	CMD 2	Big Baldy	46° 58.144' N	110° 36.393' W	
Water Source		Gravity sock for sprinkler system around Barn and Tree Cooler	46° 59.963' N	110° 46.417' W	
Water Source	Camp Rotary		47° 01.686' N	110° 46.732' W	