

# Air Operations All Fires Overview

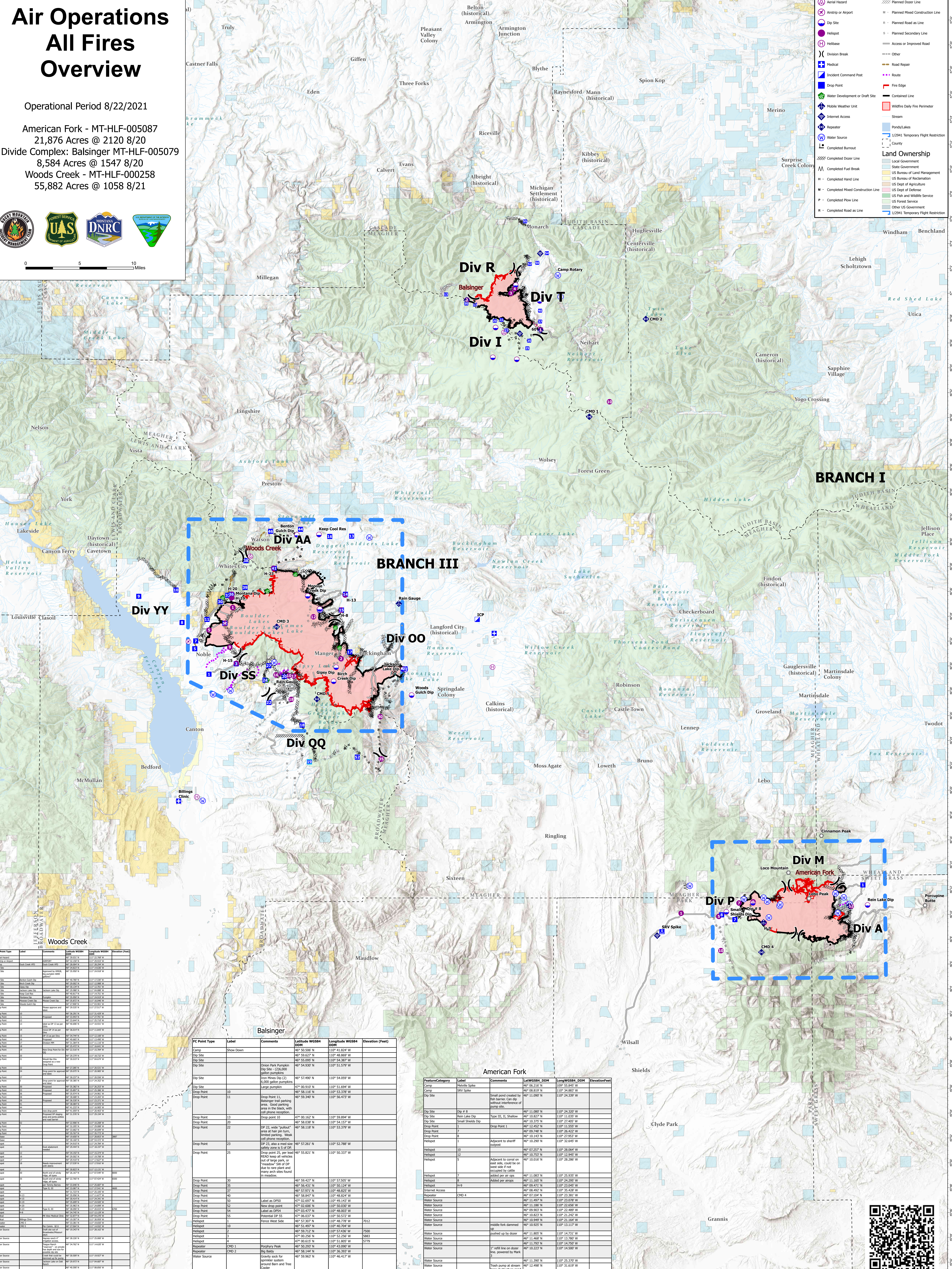
Operational Period 8/22/2021

American Fork - MT-HLF-005087  
21,876 Acres @ 2120 8/20  
Divide Complex: Balsinger MT-HLF-005079  
8,584 Acres @ 1547 8/20  
Woods Creek - MT-HLF-000258  
55,882 Acres @ 1058 8/21



0 5 10 Miles

- |  |   |
|--|---|
| <ul style="list-style-type: none"> <li>⊗ Aerial Hazard</li> <li>✈️ Airstrip or Airport</li> <li>⭕ Dip Site</li> <li>🔧 Helibase</li> <li>⚡ Division Break</li> <li>🏠 Incident Command Post</li> <li>📍 Drop Point</li> <li>🔗 Water Development or Draft Site</li> <li>🚛 Mobile Weather Unit</li> <li>📶 Internet Access</li> <li>📡 Repeater</li> <li>🌊 Water Source</li> <li>🏠 Completed Burnout</li> <li>🛣️ Completed Dozer Line</li> <li>🛣️ Completed Fuel Break</li> <li>🛣️ Completed Mixed Construction Line</li> <li>🛣️ Completed Power Line</li> <li>🛣️ Completed Road as Line</li> </ul> | <ul style="list-style-type: none"> <li>✂️ Planned Dozer Line</li> <li>✂️ Planned Mixed Construction Line</li> <li>✂️ Planned Road as Line</li> <li>⊖ Planned Secondary Line</li> <li>🛣️ Access or Improved Road</li> <li>⊖ Other</li> <li>🔧 Road Repair</li> <li>⬭ Route</li> <li>🔥 Fire Edge</li> <li>🔗 Contained Line</li> <li>🔴 Wildfire Daily Fire Perimeter</li> <li>🌊 Stream</li> <li>🌊 Pond/Lake</li> <li>📶 1/2941 Temporary Flight Restriction</li> <li>📶 County</li> <li>🗺️ Land Ownership             <ul style="list-style-type: none"> <li>Local Government</li> <li>State Government</li> <li>US Bureau of Reclamation</li> <li>US Dept of Agriculture</li> <li>US Dept of Defense</li> <li>US Fish and Wildlife Service</li> <li>US Forest Service</li> <li>Other US Government</li> <li>1/2941 Temporary Flight Restriction</li> </ul> </li> </ul> |
|--|---|



FC Point Type	Label	Comments	Latitude WGS84	Longitude WGS84	Elevation (Feet)
FC Point	Show Dozer		46° 50.250' N	110° 41.824' W	7500
FC Point	Camp		46° 50.622' N	110° 48.869' W	7500
FC Point	Dip Site		46° 55.092' N	110° 54.387' W	7500
FC Point	Dip Site		46° 54.930' N	110° 51.579' W	7500
FC Point	Dip Site	Orion Park Pumping Station 120,000 gallon pumps	46° 52.490' N	110° 54.059' W	7500
FC Point	Dip Site	Balsinger 6,000 gallon pumps	46° 00.910' N	110° 51.694' W	7500
FC Point	Dip Site		46° 56.622' N	110° 53.326' W	7500
FC Point	Drop Point		46° 59.340' N	110° 56.473' W	7500
FC Point	Drop Point	Drop Point 11, Balsinger trail parking area. Good parking, good phone reception.	46° 00.162' N	110° 59.894' W	7500
FC Point	Drop Point	Drop Point 20, Balsinger trail parking area. Good parking, good phone reception.	46° 56.118' N	110° 53.376' W	7500
FC Point	Drop Point	Drop 22, wide "tulsi" area at hair pin turn, limited parking. Weak cell phone reception.	46° 52.261' N	110° 52.788' W	7500
FC Point	Drop Point	Drop 23, area where road safety zone is S of DR.	46° 50.847' N	110° 48.824' W	7500
FC Point	Drop Point	Drop 25, per lead BS&D Area all vehicles out of large park, on "Penetration" side of DR due to fire plant and many arch sites found in meadow.	46° 56.444' N	110° 56.393' W	7500
FC Point	Drop Point		46° 52.622' N	110° 51.337' W	7500
FC Point	Drop Point		46° 52.490' N	110° 54.059' W	7500
FC Point	Drop Point		46° 50.910' N	110° 51.694' W	7500
FC Point	Drop Point		46° 56.622' N	110° 53.326' W	7500
FC Point	Drop Point		46° 59.340' N	110° 56.473' W	7500
FC Point	Drop Point		46° 00.162' N	110° 59.894' W	7500
FC Point	Drop Point		46° 56.118' N	110° 53.376' W	7500
FC Point	Drop Point		46° 52.261' N	110° 52.788' W	7500
FC Point	Drop Point		46° 50.847' N	110° 48.824' W	7500
FC Point	Drop Point		46° 56.444' N	110° 56.393' W	7500
FC Point	Drop Point		46° 52.622' N	110° 51.337' W	7500
FC Point	Drop Point		46° 52.490' N	110° 54.059' W	7500
FC Point	Drop Point		46° 50.910' N	110° 51.694' W	7500
FC Point	Drop Point		46° 56.622' N	110° 53.326' W	7500
FC Point	Drop Point		46° 59.340' N	110° 56.473' W	7500
FC Point	Drop Point		46° 00.162' N	110° 59.894' W	7500
FC Point	Drop Point		46° 56.118' N	110° 53.376' W	7500
FC Point	Drop Point		46° 52.261' N	110° 52.788' W	7500
FC Point	Drop Point		46° 50.847' N	110° 48.824' W	7500
FC Point	Drop Point		46° 56.444' N	110° 56.393' W	7500
FC Point	Drop Point		46° 52.622' N	110° 51.337' W	7500
FC Point	Drop Point		46° 52.490' N	110° 54.059' W	7500
FC Point	Drop Point		46° 50.910' N	110° 51.694' W	7500
FC Point	Drop Point		46° 56.622' N	110° 53.326' W	7500
FC Point	Drop Point		46° 59.340' N	110° 56.473' W	7500
FC Point	Drop Point		46° 00.162' N	110° 59.894' W	7500
FC Point	Drop Point		46° 56.118' N	110° 53.376' W	7500
FC Point	Drop Point		46° 52.261' N	110° 52.788' W	7500
FC Point	Drop Point		46° 50.847' N	110° 48.824' W	7500
FC Point	Drop Point		46° 56.444' N	110° 56.393' W	7500
FC Point	Drop Point		46° 52.622' N	110° 51.337' W	7500
FC Point	Drop Point		46° 52.490' N	110° 54.059' W	7500
FC Point	Drop Point		46° 50.910' N	110° 51.694' W	7500
FC Point	Drop Point		46° 56.622' N	110° 53.326' W	7500
FC Point	Drop Point		46° 59.340' N	110° 56.473' W	7500
FC Point	Drop Point		46° 00.162' N	110° 59.894' W	7500
FC Point	Drop Point		46° 56.118' N	110° 53.376' W	7500
FC Point	Drop Point		46° 52.261' N	110° 52.788' W	7500
FC Point	Drop Point		46° 50.847' N	110° 48.824' W	7500
FC Point	Drop Point		46° 56.444' N	110° 56.393' W	7500
FC Point	Drop Point		46° 52.622' N	110° 51.337' W	7500
FC Point	Drop Point		46° 52.490' N	110° 54.059' W	7500
FC Point	Drop Point		46° 50.910' N	110° 51.694' W	7500
FC Point	Drop Point		46° 56.622' N	110° 53.326' W	7500
FC Point	Drop Point		46° 59.340' N	110° 56.473' W	7500
FC Point	Drop Point		46° 00.162' N	110° 59.894' W	7500
FC Point	Drop Point		46° 56.118' N	110° 53.376' W	7500
FC Point	Drop Point		46° 52.261' N	110° 52.788' W	7500
FC Point	Drop Point		46° 50.847' N	110° 48.824' W	7500
FC Point	Drop Point		46° 56.444' N	110° 56.393' W	7500
FC Point	Drop Point		46° 52.622' N	110° 51.337' W	7500
FC Point	Drop Point		46° 52.490' N	110° 54.059' W	7500
FC Point	Drop Point		46° 50.910' N	110° 51.694' W	7500
FC Point	Drop Point		46° 56.622' N	110° 53.326' W	7500
FC Point	Drop Point		46° 59.340' N	110° 56.473' W	7500
FC Point	Drop Point		46° 00.162' N	110° 59.894' W	7500
FC Point	Drop Point		46° 56.118' N	110° 53.376' W	7500
FC Point	Drop Point		46° 52.261' N	110° 52.788' W	7500
FC Point	Drop Point		46° 50.847' N	110° 48.824' W	7500
FC Point	Drop Point		46° 56.444' N	110° 56.393' W	7500
FC Point	Drop Point		46° 52.622' N	110° 51.337' W	7500
FC Point	Drop Point		46° 52.490' N	110° 54.059' W	7500
FC Point	Drop Point		46° 50.910' N	110° 51.694' W	7500
FC Point	Drop Point		46° 56.622' N	110° 53.326' W	7500
FC Point	Drop Point		46° 59.340' N	110° 56.473' W	7500
FC Point	Drop Point		46° 00.162' N	110° 59.894' W	7500
FC Point	Drop Point		46° 56.118' N	110° 53.376' W	7500
FC Point	Drop Point		46° 52.261' N	110° 52.788' W	7500
FC Point	Drop Point		46° 50.847' N	110° 48.824' W	7500
FC Point	Drop Point		46° 56.444' N	110° 56.393' W	7500
FC Point	Drop Point		46° 52.622' N	110° 51.337' W	7500
FC Point	Drop Point		46° 52.490' N	110° 54.059' W	7500
FC Point	Drop Point		46° 50.910' N	110° 51.694' W	7500
FC Point	Drop Point		46° 56.622' N	110° 53.326' W	7500
FC Point	Drop Point		46° 59.340' N	110° 56.473' W	7500
FC Point	Drop Point		46° 00.162' N	110° 59.894' W	7500
FC Point	Drop Point		46° 56.118' N	110° 53.376' W	7500
FC Point	Drop Point		46° 52.261' N	110° 52.788' W	7500
FC Point	Drop Point		46° 50.847' N	110° 48.824' W	7500
FC Point	Drop Point		46° 56.444' N	110° 56.393' W	7500
FC Point	Drop Point		46° 52.622' N	110° 51.337' W	7500
FC Point	Drop Point		46° 52.490' N	110° 54.059' W	7500
FC Point	Drop Point		46° 50.910' N	110° 51.694' W	7500
FC Point	Drop Point		46° 56.622' N	110° 53.326' W	7500
FC Point	Drop Point		46° 59.340' N	110° 56.473' W	7500
FC Point	Drop Point		46° 00.162' N	110° 59.894' W	7500
FC Point	Drop Point		46° 56.118' N	110° 53.376' W	7500
FC Point	Drop Point		46° 52.261' N	110° 52.788' W	7500
FC Point	Drop Point		46° 50.847' N	110° 48.824' W	7500
FC Point	Drop Point		46° 56.444' N	110° 56.393' W	7500
FC Point	Drop Point		46° 52.622' N	110° 51.337' W	7500
FC Point	Drop Point		46° 52.490' N	110° 54.059' W	7500
FC Point	Drop Point		46° 50.910' N	110° 51.694' W	7500
FC Point	Drop Point		46° 56.622' N	110° 53.326' W	7500
FC Point	Drop Point		46° 59.340' N	110° 56.473' W	7500
FC Point	Drop Point		46° 00.162' N	110° 59.894' W	7500
FC Point	Drop Point		46° 56.118' N	110° 53.376' W	7500
FC Point	Drop Point		46° 52.261' N	110° 52.788' W	7500
FC Point	Drop Point		46° 50.847' N	110° 48.824' W	7500
FC Point	Drop Point		46° 56.444' N	110° 56.393' W	7500
FC Point	Drop Point		46° 52.622' N	110° 51.337' W	7500
FC Point	Drop Point		46° 52.490' N	110° 54.059' W	7500
FC Point	Drop Point		46° 50.910' N	110° 51.694' W	7500
FC Point	Drop Point		46° 56.622' N	110° 53.326' W	7500
FC Point	Drop Point		46° 59.340' N	110° 56.473' W	7500
FC Point	Drop Point		46° 00.162' N	110° 59.894' W	7500
FC Point	Drop Point		46° 56.118' N	110° 53.376' W	7500
FC Point	Drop Point		46° 52.261' N	110° 52.788' W	7500
FC Point	Drop Point		46° 50.847' N	110° 48.824' W	7500
FC Point	Drop Point		46° 56.444' N	110° 56.393' W	7500
FC Point	Drop Point		46° 52.622' N	110° 51.337' W	7500
FC Point	Drop Point		46° 52.490' N	110° 54.059' W	7500
FC Point	Drop Point		46° 50.910' N	110° 51.694' W	7500
FC Point	Drop Point		46° 56.622' N	110° 53.326' W	7500
FC Point	Drop Point		46° 59.340' N	110° 56.473' W	7500
FC Point	Drop Point		46° 00.162' N	110° 59.894' W	7500
FC Point	Drop Point		46° 56.118' N	110° 53.376' W	7500
FC Point	Drop Point		46° 52.261' N	110° 52.788' W	7500
FC Point	Drop Point		46° 50.847' N	110° 48.824' W	7500
FC Point	Drop Point		46° 56.444' N	110° 56.393' W	7500
FC Point	Drop Point		46° 52.622' N	110° 51.337' W	7500
FC Point	Drop Point		46° 52.490' N	110° 54.059' W	7500
FC Point	Drop Point		46° 50.910' N	110° 51.694' W	7500
FC Point	Drop Point		46° 56.622' N	110° 53.326' W	7500
FC Point	Drop Point		46° 59.340' N	110° 56.473' W	7500
FC Point	Drop Point		46° 00.162' N	110° 59.894' W	7500
FC Point	Drop Point		46° 56.118' N	110° 53.376' W	7500
FC Point	Drop Point		46° 52.261' N	110° 52.788' W	7500
FC Point	Drop Point		46° 50.847' N	110° 48.824' W	7500
FC Point	Drop Point		46° 56.444' N	110° 56.393' W	7500
FC Point	Drop Point		46° 52.622' N	110° 51.337' W	7500
FC Point	Drop Point		46° 52.490' N	110° 54.059' W	7500
FC Point	Drop Point		46° 50.910' N	110° 51.694' W	7500
FC Point	Drop Point		46° 56.622' N	110° 53.326' W	7500
FC Point	Drop Point		46° 59.340' N		