

Air Operations All Fires Overview

Operational Period 8/22/2021

American Fork - MT-HLF-005087

21,876 Acres @ 2120 8/20

Divide Complex: Balsinger MT-HLF-005079

8,584 Acres @ 1547 8/20

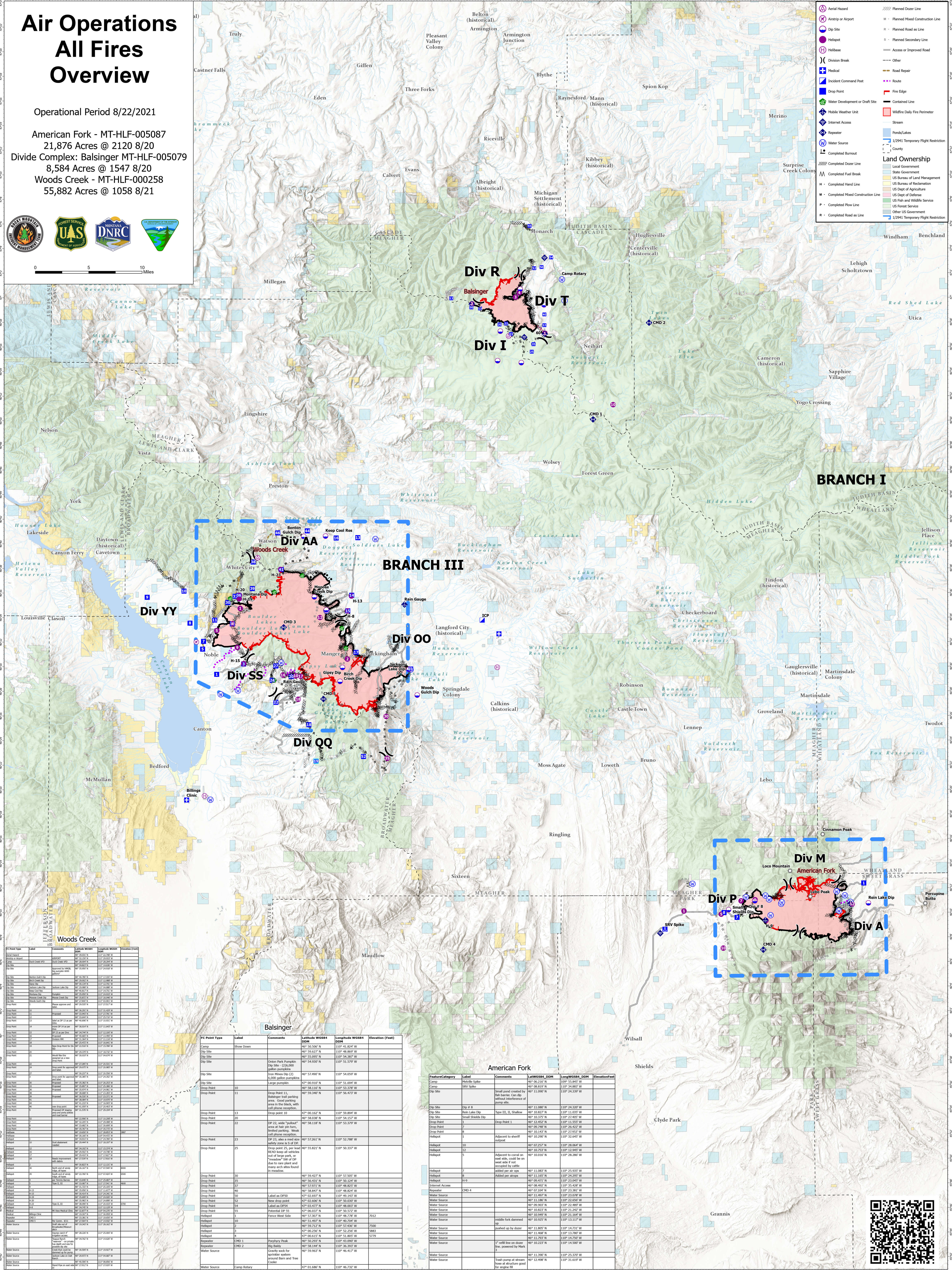
Woods Creek - MT-HLF-000258

55,882 Acres @ 1058 8/21



0 5 10 Miles

	Aerial Hazard		Planned Doser Line
	Airstrip or Airport		Planned Mixed Construction Line
	Dip Site		Planned Road as Line
	Helibase		Planned Secondary Line
	Division Break		Access or Improved Road
	Medical		Other
	Incident Command Post		Road Repair
	Drop Point		Route
	Water Development or Draft Site		Fire Edge
	Mobile Weather Unit		Contained Line
	Internet Access		Wildfire Daily Fire Perimeter
	Repeater		Stream
	Water Source		Pond/Lakes
	Completed Burnout		1/2941 Temporary Flight Restriction
	Completed Doser Line		County
	Completed Fuel Break		Land Ownership
	Completed Hand Line		Local Government
	Completed Mixed Construction Line		State Government
	Completed Road as Line		US Bureau of Land Management
			US Dept of Agriculture
			US Dept of Defense
			US Fish and Wildlife Service
			US Forest Service
			Other US Government
			1/2941 Temporary Flight Restriction



FC Point Type	Label	Comments	Latitude WGS84 DDM	Longitude WGS84 DDM	Elevation (Feet)
FC Point	Show Doem		46° 50.260' N	110° 41.824' W	
FC Point	Drop Point		46° 50.622' N	110° 48.869' W	
FC Point	Drop Point		46° 50.697' N	110° 54.387' W	
FC Point	Drop Point		46° 54.600' N	110° 51.579' W	
FC Point	Drop Point		46° 52.490' N	110° 54.099' W	
FC Point	Drop Point		46° 00.010' N	110° 51.694' W	
FC Point	Drop Point		46° 50.622' N	110° 54.329' W	
FC Point	Drop Point		46° 50.340' N	110° 54.473' W	
FC Point	Drop Point		46° 00.167' N	110° 59.894' W	
FC Point	Drop Point		46° 00.038' N	110° 54.157' W	
FC Point	Drop Point		46° 58.118' N	110° 54.339' W	
FC Point	Drop Point		46° 52.261' N	110° 52.788' W	
FC Point	Drop Point		46° 50.622' N	110° 54.329' W	
FC Point	Drop Point		46° 52.971' N	110° 48.823' W	
FC Point	Drop Point		46° 50.847' N	110° 48.824' W	
FC Point	Drop Point		46° 02.692' N	110° 54.572' W	
FC Point	Drop Point		46° 02.600' N	110° 50.039' W	
FC Point	Drop Point		46° 02.477' N	110° 48.803' W	
FC Point	Drop Point		46° 02.602' N	110° 54.572' W	
FC Point	Drop Point		46° 51.307' N	110° 48.778' W	7012
FC Point	Drop Point		46° 51.497' N	110° 48.704' W	7280
FC Point	Drop Point		46° 50.922' N	110° 54.572' W	5983
FC Point	Drop Point		46° 00.256' N	110° 52.256' W	5779
FC Point	Drop Point		46° 00.615' N	110° 54.805' W	
FC Point	Drop Point		46° 54.444' N	110° 36.293' W	
FC Point	Drop Point		46° 50.607' N	110° 46.417' W	
FC Point	Drop Point		46° 01.680' N	110° 46.732' W	

Feature Category	Label	Comments	LatWGS84_DDM	LongWGS84_DDM	Elevation(Feet)
FC Point	Drop Point		46° 08.819' N	110° 24.397' W	
FC Point	Drop Point		46° 11.087' N	110° 24.329' W	
FC Point	Drop Point		46° 08.827' N	110° 21.035' W	
FC Point	Drop Point		46° 08.325' N	110° 21.405' W	
FC Point	Drop Point		46° 12.452' N	110° 13.555' W	
FC Point	Drop Point		46° 09.748' N	110° 25.422' W	
FC Point	Drop Point		46° 08.142' N	110° 21.022' W	
FC Point	Drop Point		46° 05.200' N	110° 22.445' W	
FC Point	Drop Point		46° 02.257' N	110° 28.064' W	
FC Point	Drop Point		46° 02.753' N	110° 13.945' W	
FC Point	Drop Point		46° 00.010' N	110° 28.289' W	
FC Point	Drop Point		46° 11.087' N	110° 25.935' W	
FC Point	Drop Point		46° 11.195' N	110° 24.295' W	
FC Point	Drop Point		46° 09.421' N	110° 21.045' W	
FC Point	Drop Point		46° 09.492' N	110° 25.428' W	
FC Point	Drop Point		46° 02.104' N	110° 25.381' W	
FC Point	Drop Point		46° 08.827' N	110° 21.022' W	
FC Point	Drop Point		46° 08.905' N	110° 22.489' W	
FC Point	Drop Point		46° 11.968' N	110° 13.789' W	
FC Point	Drop Point		46° 11.293' N	110° 14.252' W	
FC Point	Drop Point		46° 09.949' N	110° 21.164' W	
FC Point	Drop Point		46° 09.925' N	110° 21.117' W	
FC Point	Drop Point		46° 11.800' N	110° 14.713' W	
FC Point	Drop Point		46° 11.789' N	110° 13.789' W	
FC Point	Drop Point		46° 11.293' N	110° 14.252' W	
FC Point	Drop Point		46° 08.223' N	110° 14.280' W	
FC Point	Drop Point		46° 11.293' N	110° 21.022' W	
FC Point	Drop Point		46° 11.968' N	110° 13.789' W	
FC Point	Drop Point		46° 12.499' N	110° 23.019' W	

