

Balsinger Fire

MT-HLF-5079

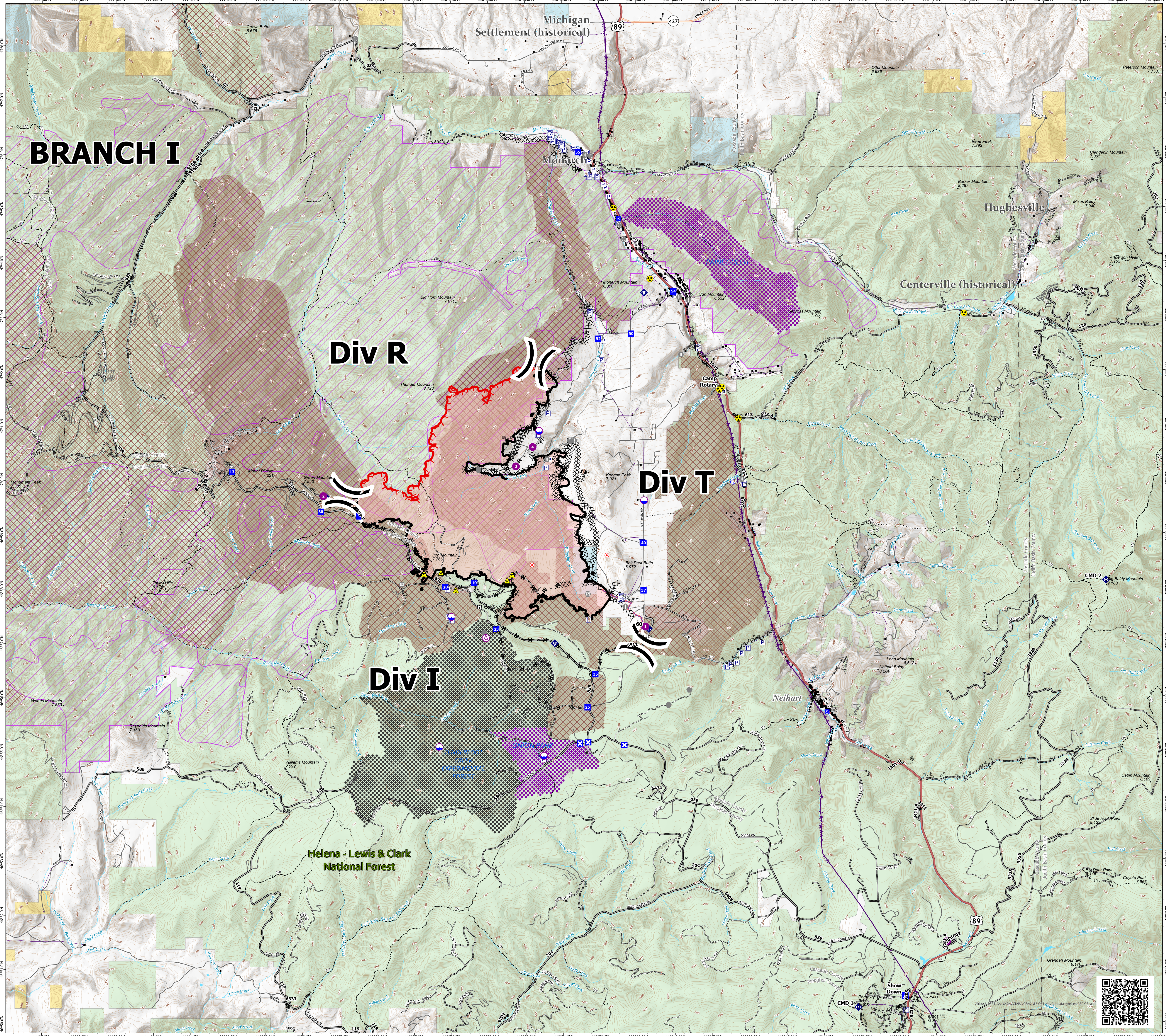
Operations Map

Approx IR 8,584 Acres @ 1547, 8/20

Operational Shift
8/22/2021



- Structure
- ⊗ Aerial Hazard
- ⊙ Dip Site
- Helispot
- ⌵ Division Break
- Drop Point
- ⊠ Closure
- ⊠ Camp
- ⊠ Staging Area
- ⊠ Lookout
- ⊙ Hot Spot - Spot Fire
- ⊙ Value at Risk
- ⊙ Other
- ⊙ Gate
- ⊙ Fire Station
- ⊙ Bridge
- ⊙ Mobile Weather Unit
- ⊙ Internet Access
- ⊙ Repeater
- ⊙ Safety Zone
- ⊙ Hazard
- ⊙ Water Source
- ⊗ Completed Dozer Line
- ⊗ Completed Fuel Break
- ⊗ Completed Hand Line
- ⊗ Completed Mixed Construction Line
- ⊗ Completed Plow Line
- ⊗ Completed Road as Line
- ⊗ Planned Fuel Break
- ⊗ Planned Road as Line
- Access or Improved Road
- Retardant Drop
- Fire Edge
- Contained Line
- Streams
- Wildfire Daily Fire Perimeter
- County Boundary
- Waterbody
- Local Government
- State Government
- US Bureau of Land Management
- US Dept of Defense
- US Forest Service
- Research Natural Areas
- Tenderfoot Experimental Forest
- Inventoried Roadless Areas
- Range Allotments
- Pastures
- Roads
- US Route
- State Route
- Local Road
- 4WD
- FS Road Type
- Improved Road
- Unimproved Road
- Closed Road
- Trails
- Motorized Trails
- Transmission Line
- Distribution Line



BRANCH I

Div R

Div T

Div I

Helena - Lewis & Clark National Forest

