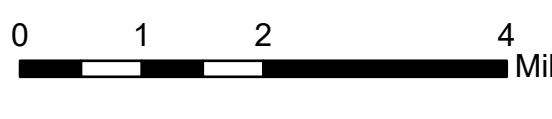


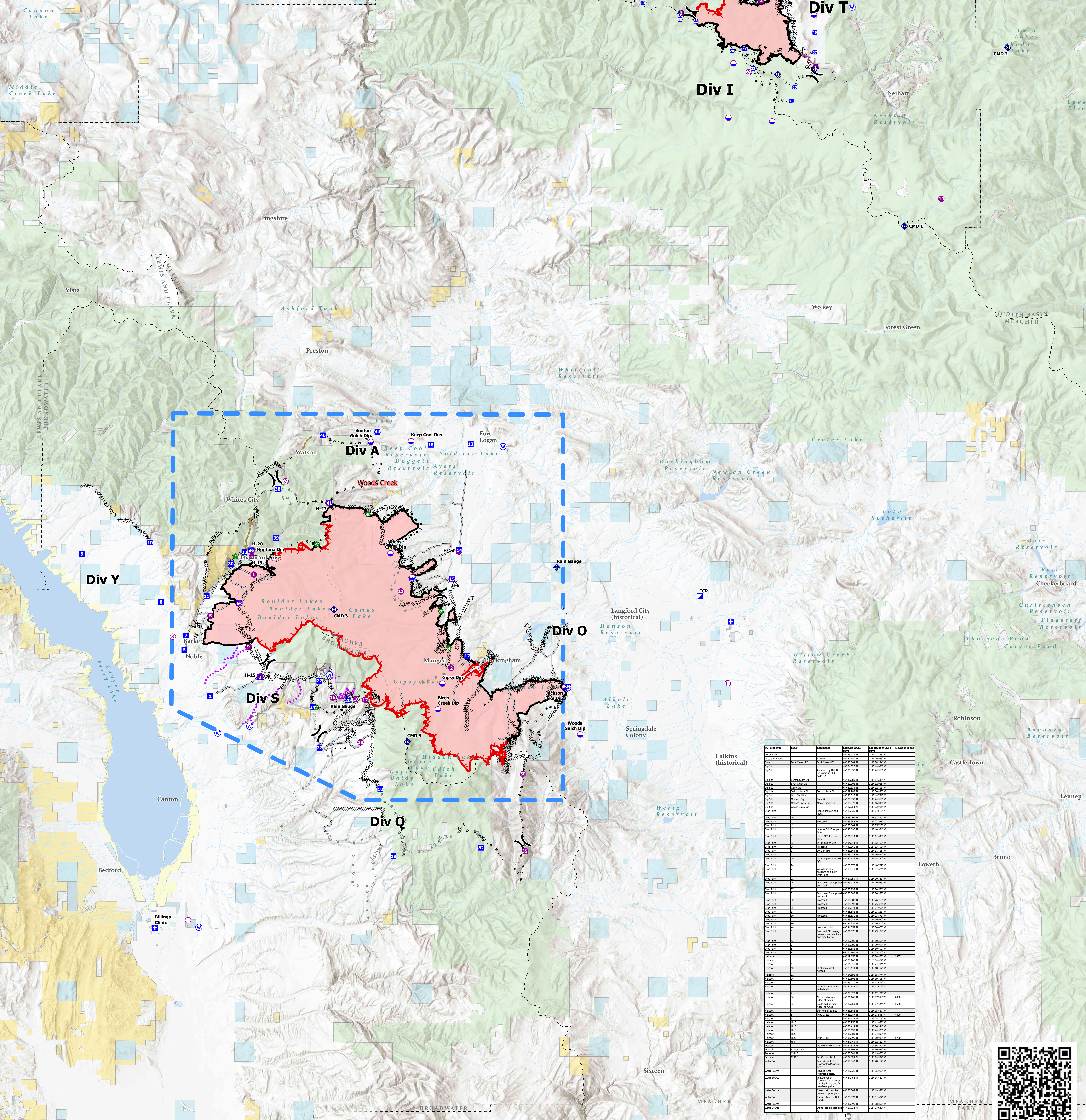
Air Operations All Fires Overview

Operational Period 8/23/2021

Divide Complex: Balsinger MT-HLF-005079
8,584 Acres @ 1547 8/20
Woods Creek - MT-HLF-000258
55,882 Acres @ 1058 8/21



FC Point Type	Label	Comments	Latitude WGS84 DTM	Longitude WGS84 DTM	Elevation (Feet)
Camp	Show Down		46° 59.506' N	110° 41.824' W	
Dip Site			46° 59.627' N	110° 48.869' W	
Dip Site			46° 55.095' N	110° 54.307' W	
Dip Site		Orion Park Pumping Dip Site - (236,000 gallon tank)	46° 54.538' N	110° 51.579' W	
Dip Site		Iron Mines Dip (2)	46° 57.490' N	110° 54.059' W	
Dip Site		6,000 gallon pumpkins	47° 00.910' N	110° 51.694' W	
Dip Site	10		46° 58.116' N	110° 53.378' W	
Dip Point	11	Drop Point 11, Balsinger trail parking area. Good parking area in the back, with cell phone reception.	46° 59.340' N	110° 56.473' W	
Dip Point	13	Drop point 10	47° 00.142' N	110° 59.894' W	
Dip Point	20		46° 58.638' N	110° 54.157' W	
Dip Point	22	DP 22, wide "pullout" area at bar parking, limited parking. Weak cell phone reception.	46° 58.118' N	110° 53.379' W	
Dip Point	23	DP 23, also a med size safety zone is S of DP.	46° 57.261' N	110° 52.788' W	
Dip Point	25	Drop point 25, see lead READ keep all vehicles out of large park "meadow" SW of DP due to new client and many arch sites found in meadow.	46° 55.821' N	110° 50.337' W	
Dip Point	30		46° 59.427' N	110° 57.507' W	
Dip Point	35		46° 56.431' N	110° 50.124' W	
Dip Point	37		46° 57.971' N	110° 48.825' W	
Dip Point	40		46° 58.847' N	110° 48.825' W	
Dip Point	50	Label as DP50	47° 02.697' N	110° 49.143' W	
Dip Point	52	New drop point	47° 02.696' N	110° 50.030' W	
Dip Point	54	Label as DP54	47° 03.617' N	110° 48.030' W	
Dip Point	55	Potential DP 55	47° 06.037' N	110° 50.572' W	
Helispot	1	Fence West Side	46° 57.307' N	110° 48.778' W	7012
Helispot	10		46° 55.407' N	110° 40.294' W	7500
Helispot	2		46° 59.712' N	110° 57.430' W	7500
Helispot	3		47° 00.256' N	110° 52.256' W	5883
Helispot	4		47° 00.815' N	110° 51.805' W	5779
Repeater	CHD 1	Prophery Peak	46° 59.293' N	110° 43.200' W	
Repeater	CHD 2	Big Eddy	46° 58.144' N	110° 36.393' W	
Water Source		Growth sock for service system around Barn and Tree Cooler	46° 59.963' N	110° 46.417' W	
Water Source	Camp Rotary		47° 01.680' N	110° 46.732' W	



FC Point Type	Label	Comments	Latitude WGS84 DTM	Longitude WGS84 DTM	Elevation (Feet)
Water Source	Prophery Peak		46° 59.293' N	110° 43.200' W	
Water Source	Big Eddy		46° 58.144' N	110° 36.393' W	
Water Source	Growth sock for service system around Barn and Tree Cooler		46° 59.963' N	110° 46.417' W	
Water Source	Camp Rotary		47° 01.680' N	110° 46.732' W	
Water Source	Orion Park Pumping Dip Site - (236,000 gallon tank)		46° 54.538' N	110° 51.579' W	
Water Source	Iron Mines Dip (2)		46° 57.490' N	110° 54.059' W	
Water Source	6,000 gallon pumpkins		47° 00.910' N	110° 51.694' W	
Water Source	Drop Point 11, Balsinger trail parking area. Good parking area in the back, with cell phone reception.		46° 59.340' N	110° 56.473' W	
Water Source	Drop point 10		47° 00.142' N	110° 59.894' W	
Water Source	DP 22, wide "pullout" area at bar parking, limited parking. Weak cell phone reception.		46° 58.118' N	110° 53.379' W	
Water Source	DP 23, also a med size safety zone is S of DP.		46° 57.261' N	110° 52.788' W	
Water Source	Drop point 25, see lead READ keep all vehicles out of large park "meadow" SW of DP due to new client and many arch sites found in meadow.		46° 55.821' N	110° 50.337' W	
Water Source			46° 59.427' N	110° 57.507' W	
Water Source			46° 56.431' N	110° 50.124' W	
Water Source			46° 57.971' N	110° 48.825' W	
Water Source			46° 58.847' N	110° 48.825' W	
Water Source	Label as DP50		47° 02.697' N	110° 49.143' W	
Water Source	New drop point		47° 02.696' N	110° 50.030' W	
Water Source	Label as DP54		47° 03.617' N	110° 48.030' W	
Water Source	Potential DP 55		47° 06.037' N	110° 50.572' W	
Water Source	Fence West Side		46° 57.307' N	110° 48.778' W	7012
Water Source			46° 55.407' N	110° 40.294' W	7500
Water Source			46° 59.712' N	110° 57.430' W	7500
Water Source			47° 00.256' N	110° 52.256' W	5883
Water Source			47° 00.815' N	110° 51.805' W	5779
Water Source	Prophery Peak		46° 59.293' N	110° 43.200' W	
Water Source	Big Eddy		46° 58.144' N	110° 36.393' W	
Water Source	Growth sock for service system around Barn and Tree Cooler		46° 59.963' N	110° 46.417' W	
Water Source	Camp Rotary		47° 01.680' N	110° 46.732' W	

