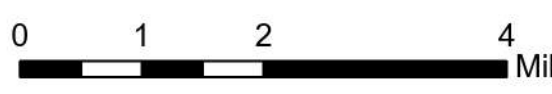


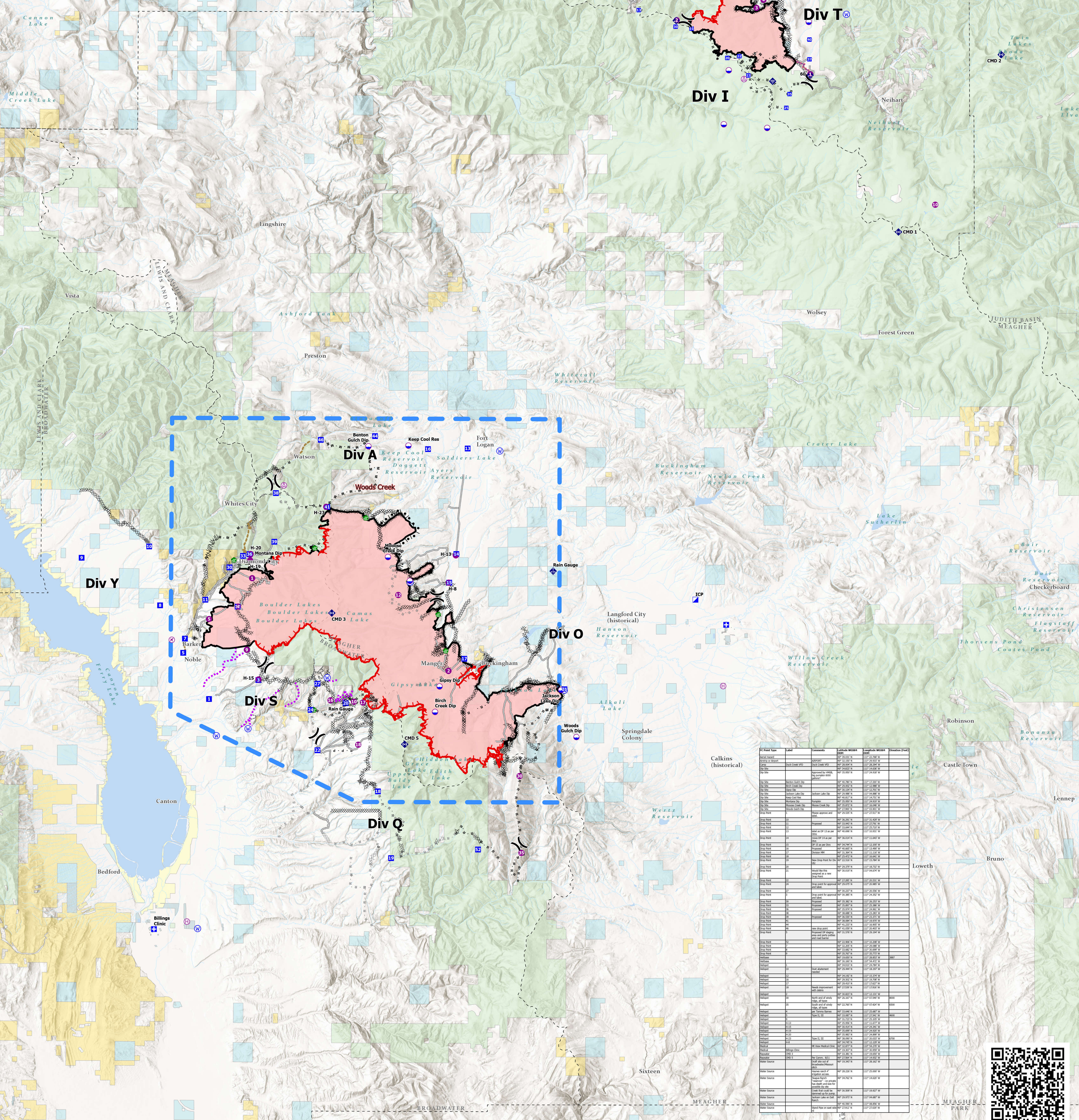
# Air Operations All Fires Overview

Operational Period 8/23/2021

Divide Complex: Balsinger MT-HLF-005079  
8,584 Acres @ 1547 8/20  
Woods Creek - MT-HLF-000258  
55,882 Acres @ 1058 8/21



FC Point Type	Label	Comments	Latitude WGS84 DDM	Longitude WGS84 DDM	Elevation (Feet)
Camp	Show Down		46° 59.900' N	110° 41.824' W	
Dip Site			46° 59.627' N	110° 48.869' W	
Dip Site			46° 55.095' N	110° 54.387' W	
Dip Site		Crater Park Furnace Dip Site - (250,000 gallon tank)	46° 54.538' N	110° 53.579' W	
Dip Site		Iron Mines Dip (2) 6,000 gallon tank/line	46° 57.490' N	110° 54.059' W	
Dip Site	10	Large pump	47° 00.910' N	110° 51.684' W	
Drop Point	10		46° 58.116' N	110° 53.378' W	
Drop Point	11	Drop Point 11, Balsinger fire parking area - Good parking area in the block with cell phone reception	46° 59.340' N	110° 56.473' W	
Drop Point	13	Drop point 13	47° 00.162' N	110° 59.894' W	
Drop Point	20		46° 58.638' N	110° 54.157' W	
Drop Point	22	DP 22, wide "pullout" area at base of hill, limited parking. Weak cell phone reception.	46° 58.118' N	110° 54.157' W	
Drop Point	23	DP 23, also a med area safety zone is S of DP	46° 57.261' N	110° 52.788' W	
Drop Point	25	Drop point 25, see lead READ keep all vehicles out of large park "meadow" SW of DP due to new client and many arch sites found in meadow.	46° 55.821' N	110° 50.337' W	
Drop Point	30		46° 59.427' N	110° 57.507' W	
Drop Point	35		46° 56.431' N	110° 50.124' W	
Drop Point	37		46° 57.971' N	110° 48.823' W	
Drop Point	48		46° 58.847' N	110° 48.823' W	
Drop Point	50	Label as DP50	47° 02.697' N	110° 49.143' W	
Drop Point	52	New drop point	47° 02.696' N	110° 50.030' W	
Drop Point	54	Label as DP54	47° 03.617' N	110° 48.202' W	
Drop Point	55	Revised DP 55	47° 06.037' N	110° 50.572' W	
Helipad	1	Fence West Side	46° 57.307' N	110° 48.778' W	7012
Helipad	10		46° 53.407' N	110° 40.204' W	
Helipad	2		46° 59.712' N	110° 57.430' W	7500
Helipad	3		47° 00.250' N	110° 52.210' W	5883
Helipad	4		47° 00.615' N	110° 51.807' W	5779
Repeater	CHD 1	Murphy Peak	46° 59.297' N	110° 43.200' W	
Repeater	CHD 2	Big Baldy	46° 58.144' N	110° 36.393' W	
Water Source		Gravel rock for work site around Barn and Tree Coder	46° 59.903' N	110° 46.417' W	
Water Source		Camp Rotary	47° 01.680' N	110° 46.732' W	



FC Point Type	Label	Comments	Latitude WGS84 DDM	Longitude WGS84 DDM	Elevation (Feet)
Water Source			46° 59.900' N	110° 41.824' W	
Drop Point	10		46° 58.116' N	110° 53.378' W	
Drop Point	11		46° 59.340' N	110° 56.473' W	
Drop Point	13		47° 00.162' N	110° 59.894' W	
Drop Point	20		46° 58.638' N	110° 54.157' W	
Drop Point	22		46° 58.118' N	110° 54.157' W	
Drop Point	23		46° 57.261' N	110° 52.788' W	
Drop Point	25		46° 55.821' N	110° 50.337' W	
Drop Point	30		46° 59.427' N	110° 57.507' W	
Drop Point	35		46° 56.431' N	110° 50.124' W	
Drop Point	37		46° 57.971' N	110° 48.823' W	
Drop Point	48		46° 58.847' N	110° 48.823' W	
Drop Point	50		47° 02.697' N	110° 49.143' W	
Drop Point	52		47° 02.696' N	110° 50.030' W	
Drop Point	54		47° 03.617' N	110° 48.202' W	
Drop Point	55		47° 06.037' N	110° 50.572' W	
Helipad	1		46° 57.307' N	110° 48.778' W	7012
Helipad	10		46° 53.407' N	110° 40.204' W	
Helipad	2		46° 59.712' N	110° 57.430' W	7500
Helipad	3		47° 00.250' N	110° 52.210' W	5883
Helipad	4		47° 00.615' N	110° 51.807' W	5779
Repeater	CHD 1		46° 59.297' N	110° 43.200' W	
Repeater	CHD 2		46° 58.144' N	110° 36.393' W	
Water Source			46° 59.903' N	110° 46.417' W	
Water Source			47° 01.680' N	110° 46.732' W	

