

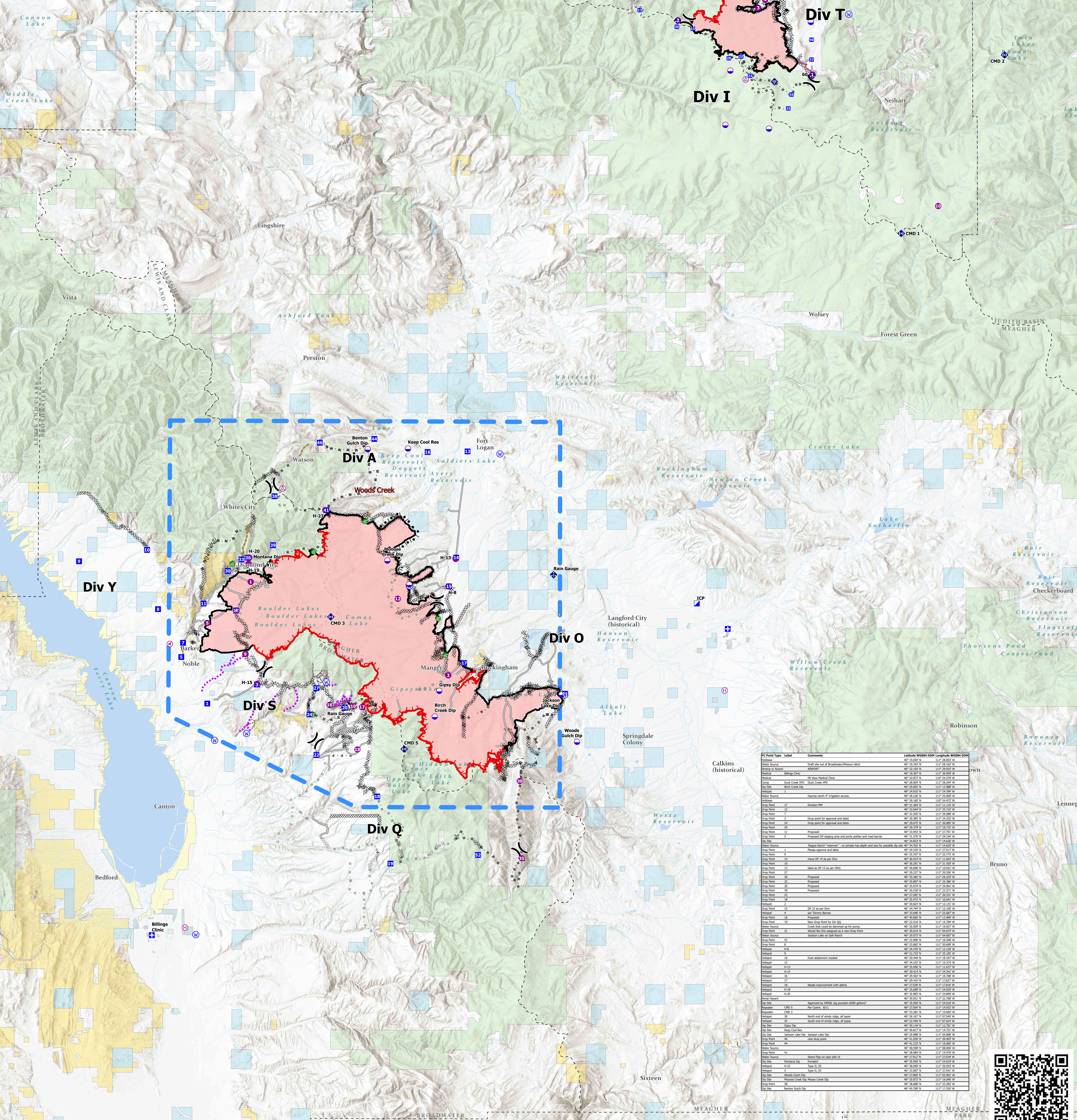
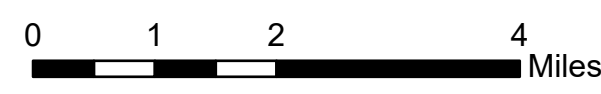
Air Operations All Fires Overview

Operational Period 8/24/2021

Divide Complex: Balsinger MT-HLF-005079
8,584 Acres @ 1547 8/20
Woods Creek - MT-HLF-00258
55,882 Acres @ 1058 8/21



FC Point Type	Label	Comments	Latitude WGS84 DDM	Longitude WGS84 DDM	Elevation (Feet)
Camp	Show Down		46° 59.506' N	110° 41.824' W	
Dip Site			46° 59.627' N	110° 48.869' W	
Dip Site			46° 59.095' N	110° 54.387' W	
Dip Site		Onion Park Pumpkin Dip Site - (236,000 gallon pumpkins)	46° 54.539' N	110° 51.579' W	
Dip Site		Iron Mines Dip (2)	46° 57.490' N	110° 54.059' W	
Dip Site		6,000 gallon pumpkins	47° 00.910' N	110° 51.594' W	
Drop Point	10		46° 58.116' N	110° 53.378' W	
Drop Point	11	Drop Point 11, Balsinger trail parking area. Good parking area in the back, with cell phone reception.	46° 59.349' N	110° 56.473' W	
Drop Point	13	Drop point 10	47° 00.142' N	110° 59.894' W	
Drop Point	20		46° 58.118' N	110° 54.157' W	
Drop Point	22	DP 22, wide "pulsed" area on base of mountain. Limited parking. Weak cell phone reception.	46° 58.118' N	110° 53.379' W	
Drop Point	23	DP 23, also a med size safety zone is S of DP	46° 57.261' N	110° 52.788' W	
Drop Point	25	Drop zone 25, see last READ Keep all vehicles out of large park "meadow" SW of DP due to new plant and many arch sites found in meadow.	46° 55.821' N	110° 50.337' W	
Drop Point	30		46° 59.427' N	110° 57.507' W	
Drop Point	35		46° 56.431' N	110° 50.124' W	
Drop Point	37		46° 57.971' N	110° 48.832' W	
Drop Point	40		46° 58.847' N	110° 48.822' W	
Drop Point	50	Label as DPS	47° 02.697' N	110° 49.143' W	
Drop Point	52	New drop point	47° 02.696' N	110° 50.030' W	
Drop Point	54	Label as DP24	47° 03.017' N	110° 48.021' W	
Drop Point	55	Potential DP 55	47° 06.037' N	110° 50.572' W	
Helispot	1	Fence West Side	46° 57.307' N	110° 48.778' W	7012
Helispot	10		46° 51.897' N	110° 40.794' W	7500
Helispot	2		46° 59.712' N	110° 57.430' W	7500
Helispot	3		47° 00.256' N	110° 52.256' W	5883
Helispot	14		47° 00.415' N	110° 51.805' W	5779
Repeater	CHD 1	Mophry Peak	46° 59.293' N	110° 43.028' W	
Repeater	CHD 2	Big Baldy	46° 58.144' N	110° 36.393' W	
Water Source		Gravel sock for borehole system around Barn and Tree Cooler	46° 59.963' N	110° 46.417' W	
Water Source	Camp Rotary		47° 01.689' N	110° 46.732' W	



Legend

- ⊖ Aerial Hazard
- ✈️ Airstrip or Airport
- Ⓛ Dip Site
- Ⓜ Helispot
- Ⓡ Helibase
- Ⓢ Medical
- Ⓜ Incident Command Post
- Ⓢ Drop Point
- Ⓢ Water Development or Draft Site
- Ⓜ Mobile Weather Unit
- Ⓜ Internet Access
- Ⓢ Repeater
- Ⓢ Water Source
- Ⓢ Completed Burnout
- Ⓜ Completed Fuel Break
- Ⓜ Completed Hand Line
- Ⓜ Completed Mixed Construction Line
- Ⓜ Completed Flow Line
- Ⓜ Completed Road as Line
- Ⓢ Planned Doser Line
- Ⓜ Planned Mixed Construction Line
- Ⓜ Planned Road as Line
- Ⓢ Planned Secondary Line
- Ⓢ Access or Improved Road
- Ⓢ Other
- Ⓢ Road Repair
- Ⓢ Route
- Ⓢ Fire Edge
- Ⓢ Contained Line
- Ⓢ Wildfire Daily Fire Perimeter
- Ⓢ Stream
- Ⓢ Ponds/Lakes
- Ⓢ 1/2941 Temporary Flight Restriction
- Ⓢ County
- Land Ownership**
 - Ⓢ Local Government
 - Ⓢ State Government
 - Ⓢ US Bureau of Land Management
 - Ⓢ US Bureau of Reclamation
 - Ⓢ US Dept. of Agriculture
 - Ⓢ US Dept. of Defense
 - Ⓢ US Fish and Wildlife Service
 - Ⓢ US Forest Service
 - Ⓢ Other US Government

FC Point Type	Label	Comments	Latitude WGS84 DDM	Longitude WGS84 DDM	Elevation (Feet)
Water Source		Craft site out of Broadwater Pressure ditch	46° 18.243' N	110° 28.302' W	
Water Source		ASPECT	46° 12.242' N	110° 25.262' W	
Water Source		Billings City	46° 16.327' N	110° 35.059' W	
Water Source		88 West Medical Clinic	46° 32.877' N	110° 54.276' W	
Water Source		Duck Creek Dip	46° 29.602' N	110° 53.988' W	
Water Source		Back Creek Dip	46° 29.602' N	110° 53.988' W	
Water Source		Hayman ranch W Engration access	46° 38.282' N	110° 26.002' W	
Water Source			46° 31.384' N	110° 31.150' W	
Water Source		Chadwick Hill	46° 31.384' N	110° 31.150' W	
Water Source		Drop point for approval and label	46° 32.265' N	110° 29.088' W	
Water Source		Drop point for approval and label	46° 31.935' N	110° 29.268' W	
Water Source		Drop point for approval and label	46° 29.053' N	110° 29.985' W	
Water Source		Proposed	46° 29.599' N	110° 39.750' W	
Water Source		Proposed	46° 31.576' N	110° 29.294' W	
Water Source		Proposed	46° 28.428' N	110° 14.626' W	
Water Source		Thayer Ranch "meadow" on private land north and west for possible dip site	46° 34.702' N	110° 14.820' W	
Water Source		Private electric and phone	46° 29.529' N	110° 27.710' W	
Water Source		meadow DP 14 per per site	46° 35.742' N	110° 29.777' W	
Water Source			46° 30.298' N	110° 14.626' W	
Water Source			46° 38.282' N	110° 31.429' W	
Water Source		Label as DP 10 as per DDM	46° 30.272' N	110° 29.506' W	
Water Source		Proposed	46° 35.507' N	110° 25.750' W	
Water Source		Proposed	46° 35.507' N	110° 25.750' W	
Water Source		Proposed	46° 35.507' N	110° 25.750' W	
Water Source		Proposed	46° 35.507' N	110° 25.750' W	
Water Source		Proposed	46° 27.882' N	110° 25.512' W	
Water Source		Proposed	46° 28.428' N	110° 14.626' W	
Water Source		DP 14 as per site	46° 35.742' N	110° 29.777' W	
Water Source		per Thayer Ranch	46° 38.282' N	110° 29.088' W	
Water Source		New Drop Point for DP-QG	46° 22.524' N	110° 15.784' W	
Water Source		Creek meadow used for stream up to point	46° 30.298' N	110° 14.626' W	
Water Source		meadow site on approved as a new Drop Point	46° 30.298' N	110° 14.626' W	
Water Source		Jackson Lake on Oak Ranch	46° 29.977' N	110° 14.649' W	
Water Source			46° 40.188' N	110° 21.253' W	
Water Source			46° 40.188' N	110° 21.253' W	
Water Source		Health improvement with debris	46° 27.882' N	110° 17.926' W	
Water Source			46° 35.463' N	110° 24.898' W	
Water Source			46° 35.463' N	110° 24.898' W	
Water Source		Approved by MDCB, Big pumpkins (1000 gallon?)	46° 35.902' N	110° 24.838' W	
Water Source		CHD 1	46° 27.882' N	110° 14.626' W	
Water Source		CHD 2	46° 31.384' N	110° 14.626' W	
Water Source		North end of sandy ridge, all types	46° 30.298' N	110° 14.626' W	
Water Source		South end of sandy ridge, all types	46° 30.298' N	110° 14.626' W	
Water Source		Keep Cool Res	46° 40.817' N	110° 14.712' W	
Water Source		Hanson Lake Dip	46° 41.213' N	110° 15.905' W	
Water Source		Label as DP 10	46° 30.298' N	110° 14.626' W	
Water Source			46° 38.482' N	110° 18.932' W	
Water Source			46° 27.882' N	110° 17.926' W	
Water Source		Stand Pipe on east side of	46° 35.902' N	110° 24.838' W	
Water Source			46° 33.887' N	110° 27.842' W	
Water Source			46° 30.298' N	110° 14.626' W	
Water Source			46° 35.902' N	110° 14.626' W	
Water Source			46° 40.188' N	110° 14.626' W	
Water Source			46° 40.188' N	110° 14.626' W	

