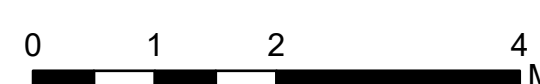


Air Operations All Fires Overview

Operational Period 8/25/2021

Divide Complex: Balsinger MT-HLF-005079
8,584 Acres @ 1547 8/20
Woods Creek - MT-HLF-000258
55,858 Acres @ 0051 8/23



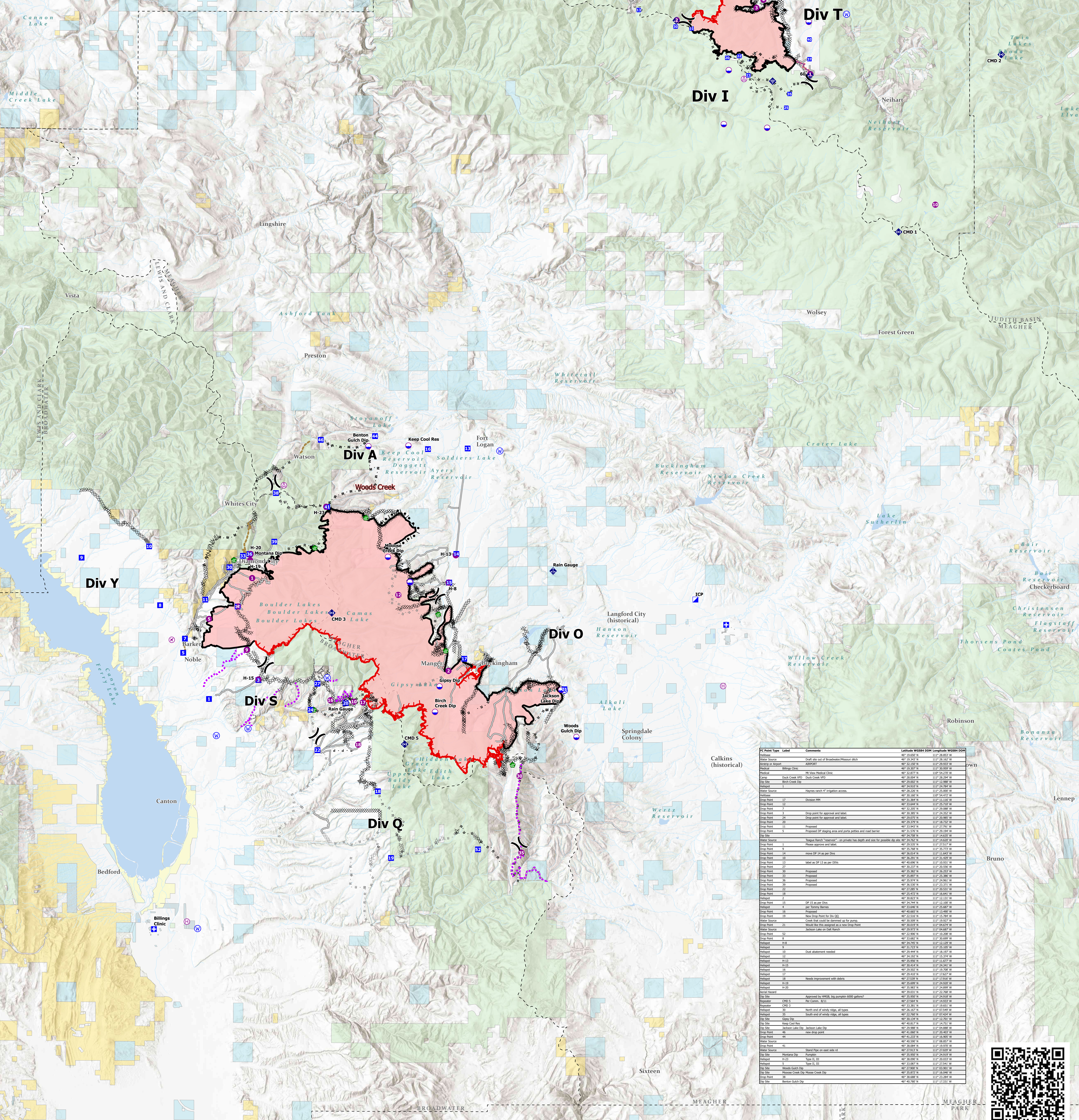
FC Point Type	Label	Comments	Latitude WGS84 DDM	Longitude WGS84 DDM	Elevation (Feet)
Camp	Show Down		46° 59.506' N	110° 41.824' W	
Dip Site			46° 59.627' N	110° 48.869' W	
Dip Site			46° 59.095' N	110° 54.387' W	
Dip Site		Orion Park Pumpkin Dip Site - (236,000 gallon pumpkins)	46° 54.538' N	110° 51.579' W	
Dip Site		Iron Mines Dip (2)	46° 57.490' N	110° 54.059' W	
Dip Site		6,000 gallon pumpkins	47° 00.910' N	110° 51.694' W	
Dip Point	10	Drop Point 10	46° 58.116' N	110° 53.378' W	
Dip Point	11	Drop Point 11, Balsinger trail parking area. Good parking area in the back, with cell phone reception.	46° 59.349' N	110° 56.473' W	
Dip Point	13	Drop Point 13	47° 00.142' N	110° 59.894' W	
Dip Point	20	Drop Point 20	46° 58.638' N	110° 54.157' W	
Dip Point	22	DP 22, wide "pullout" area at base of park, limited parking. Weak cell phone reception.	46° 58.118' N	110° 53.379' W	
Dip Point	23	DP 23, also a med size safety zone is S of DP.	46° 57.261' N	110° 52.788' W	
Dip Point	25	Drop zone 25, see lead READ keep all vehicles out of large park "meadow" SW of DP due to new client and many arch sites found in meadow.	46° 55.821' N	110° 50.337' W	
Dip Point	30		46° 59.427' N	110° 57.507' W	
Dip Point	35		46° 56.431' N	110° 50.124' W	
Dip Point	37		46° 57.971' N	110° 48.832' W	
Dip Point	40		46° 58.847' N	110° 48.820' W	
Dip Point	49		47° 02.697' N	110° 49.143' W	
Dip Point	52		47° 02.696' N	110° 50.030' W	
Dip Point	54		47° 03.677' N	110° 48.030' W	
Dip Point	55	Potential DP 55	47° 06.037' N	110° 50.572' W	
Helispot	1	Fence West Side	46° 57.307' N	110° 48.778' W	7012
Helispot	10		46° 55.897' N	110° 60.794' W	7500
Helispot	2		46° 59.712' N	110° 57.430' W	7500
Helispot	3		47° 00.256' N	110° 52.256' W	5883
Helispot	4		47° 00.615' N	110° 51.800' W	5779
Repeater	CHD 1	Prophary Peak	46° 59.293' N	110° 43.000' W	
Repeater	CHD 2	Big Baldy	46° 58.144' N	110° 36.393' W	
Water Source		Gravel sock for parker system around Barn and Tree Cooler	46° 59.963' N	110° 46.417' W	
Water Source	Camp Rotary		47° 01.680' N	110° 46.732' W	

- Aerial Hazard
- Airstrip or Airport
- Dip Site
- Helispot
- Helibase
- Division Break
- Medical
- Incident Command Post
- Drop Point
- Water Development or Draft Site
- Mobile Weather Unit
- Internet Access
- Repeater
- Water Source
- Completed Burnout
- Completed Dozer Line
- Completed Fuel Break
- Completed Hand Line
- Completed Mixed Construction Line
- Completed Plow Line
- Completed Road as Line

- Planned Dozer Line
- Planned Mixed Construction Line
- Planned Road as Line
- Planned Secondary Line
- Access or Improved Road
- Other
- Road Repair
- Route
- Fire Edge
- Contained Line
- Wildfire Daily Fire Perimeter
- Stream
- Ponds/Lakes
- County

Land Ownership

- Local Government
- State Government
- US Bureau of Land Management
- US Dept of Agriculture
- US Dept of Defense
- US Fish and Wildlife Service
- US Forest Service
- Other US Government



FC Point Type	Label	Comments	Latitude WGS84 DDM	Longitude WGS84 DDM
Water Source		Draft site out of Broadwater Reservoir ditch	46° 19.242' N	110° 28.162' W
Water Source		ADPNET	46° 22.888' N	110° 25.258' W
Water Source		Billings Clinic	46° 19.162' N	110° 30.558' W
Medical		18. Vets Medical Center	46° 32.878' N	110° 54.278' W
Drop Point	1	Drop Point 1	46° 29.882' N	110° 13.982' W
Drop Point	2	Drop Point 2	46° 29.882' N	110° 13.982' W
Water Source		Haynes ranch #1 Engstrom access	46° 28.282' N	110° 28.082' W
Drop Point	3	Drop Point 3	46° 31.282' N	110° 11.182' W
Drop Point	4	Drop Point 4	46° 31.282' N	110° 11.182' W
Drop Point	5	Drop point for approval and label	46° 32.282' N	110° 29.082' W
Drop Point	6	Drop point for approval and label	46° 32.282' N	110° 29.082' W
Drop Point	7	Drop point for approval and label	46° 32.282' N	110° 29.082' W
Drop Point	8	Proposed	46° 31.282' N	110° 29.082' W
Drop Point	9	Proposed DP staging area and porta potties and road barrier	46° 31.282' N	110° 29.082' W
Water Source		Thayer Ranch "meadow" on private land south and west of possible dip site	46° 34.282' N	110° 14.082' W
Drop Point	10	Drop Point 10	46° 35.282' N	110° 25.082' W
Drop Point	11	Drop Point 11	46° 35.282' N	110° 25.082' W
Drop Point	12	Drop Point 12	46° 35.282' N	110° 25.082' W
Drop Point	13	Drop Point 13	46° 35.282' N	110° 25.082' W
Drop Point	14	Drop Point 14	46° 35.282' N	110° 25.082' W
Drop Point	15	Drop Point 15	46° 35.282' N	110° 25.082' W
Drop Point	16	Drop Point 16	46° 35.282' N	110° 25.082' W
Drop Point	17	Drop Point 17	46° 35.282' N	110° 25.082' W
Drop Point	18	Drop Point 18	46° 35.282' N	110° 25.082' W
Drop Point	19	Drop Point 19	46° 35.282' N	110° 25.082' W
Drop Point	20	Drop Point 20	46° 35.282' N	110° 25.082' W
Drop Point	21	Drop Point 21	46° 35.282' N	110° 25.082' W
Drop Point	22	Drop Point 22	46° 35.282' N	110° 25.082' W
Drop Point	23	Drop Point 23	46° 35.282' N	110° 25.082' W
Drop Point	24	Drop Point 24	46° 35.282' N	110° 25.082' W
Drop Point	25	Drop Point 25	46° 35.282' N	110° 25.082' W
Drop Point	26	Drop Point 26	46° 35.282' N	110° 25.082' W
Drop Point	27	Drop Point 27	46° 35.282' N	110° 25.082' W
Drop Point	28	Drop Point 28	46° 35.282' N	110° 25.082' W
Drop Point	29	Drop Point 29	46° 35.282' N	110° 25.082' W
Drop Point	30	Drop Point 30	46° 35.282' N	110° 25.082' W
Drop Point	31	Drop Point 31	46° 35.282' N	110° 25.082' W
Drop Point	32	Drop Point 32	46° 35.282' N	110° 25.082' W
Drop Point	33	Drop Point 33	46° 35.282' N	110° 25.082' W
Drop Point	34	Drop Point 34	46° 35.282' N	110° 25.082' W
Drop Point	35	Drop Point 35	46° 35.282' N	110° 25.082' W
Drop Point	36	Drop Point 36	46° 35.282' N	110° 25.082' W
Drop Point	37	Drop Point 37	46° 35.282' N	110° 25.082' W
Drop Point	38	Drop Point 38	46° 35.282' N	110° 25.082' W
Drop Point	39	Drop Point 39	46° 35.282' N	110° 25.082' W
Drop Point	40	Drop Point 40	46° 35.282' N	110° 25.082' W
Drop Point	41	Drop Point 41	46° 35.282' N	110° 25.082' W
Drop Point	42	Drop Point 42	46° 35.282' N	110° 25.082' W
Drop Point	43	Drop Point 43	46° 35.282' N	110° 25.082' W
Drop Point	44	Drop Point 44	46° 35.282' N	110° 25.082' W
Drop Point	45	Drop Point 45	46° 35.282' N	110° 25.082' W
Drop Point	46	Drop Point 46	46° 35.282' N	110° 25.082' W
Drop Point	47	Drop Point 47	46° 35.282' N	110° 25.082' W
Drop Point	48	Drop Point 48	46° 35.282' N	110° 25.082' W
Drop Point	49	Drop Point 49	46° 35.282' N	110° 25.082' W
Drop Point	50	Drop Point 50	46° 35.282' N	110° 25.082' W
Drop Point	51	Drop Point 51	46° 35.282' N	110° 25.082' W
Drop Point	52	Drop Point 52	46° 35.282' N	110° 25.082' W
Drop Point	53	Drop Point 53	46° 35.282' N	110° 25.082' W
Drop Point	54	Drop Point 54	46° 35.282' N	110° 25.082' W
Drop Point	55	Drop Point 55	46° 35.282' N	110° 25.082' W
Drop Point	56	Drop Point 56	46° 35.282' N	110° 25.082' W
Drop Point	57	Drop Point 57	46° 35.282' N	110° 25.082' W
Drop Point	58	Drop Point 58	46° 35.282' N	110° 25.082' W
Drop Point	59	Drop Point 59	46° 35.282' N	110° 25.082' W
Drop Point	60	Drop Point 60	46° 35.282' N	110° 25.082' W
Drop Point	61	Drop Point 61	46° 35.282' N	110° 25.082' W
Drop Point	62	Drop Point 62	46° 35.282' N	110° 25.082' W
Drop Point	63	Drop Point 63	46° 35.282' N	110° 25.082' W
Drop Point	64	Drop Point 64	46° 35.282' N	110° 25.082' W
Drop Point	65	Drop Point 65	46° 35.282' N	110° 25.082' W
Drop Point	66	Drop Point 66	46° 35.282' N	110° 25.082' W
Drop Point	67	Drop Point 67	46° 35.282' N	110° 25.082' W
Drop Point	68	Drop Point 68	46° 35.282' N	110° 25.082' W
Drop Point	69	Drop Point 69	46° 35.282' N	110° 25.082' W
Drop Point	70	Drop Point 70	46° 35.282' N	110° 25.082' W
Drop Point	71	Drop Point 71	46° 35.282' N	110° 25.082' W
Drop Point	72	Drop Point 72	46° 35.282' N	110° 25.082' W
Drop Point	73	Drop Point 73	46° 35.282' N	110° 25.082' W
Drop Point	74	Drop Point 74	46° 35.282' N	110° 25.082' W
Drop Point	75	Drop Point 75	46° 35.282' N	110° 25.082' W
Drop Point	76	Drop Point 76	46° 35.282' N	110° 25.082' W
Drop Point	77	Drop Point 77	46° 35.282' N	110° 25.082' W
Drop Point	78	Drop Point 78	46° 35.282' N	110° 25.082' W
Drop Point	79	Drop Point 79	46° 35.282' N	110° 25.082' W
Drop Point	80	Drop Point 80	46° 35.282' N	110° 25.082' W
Drop Point	81	Drop Point 81	46° 35.282' N	110° 25.082' W
Drop Point	82	Drop Point 82	46° 35.282' N	110° 25.082' W
Drop Point	83	Drop Point 83	46° 35.282' N	110° 25.082' W
Drop Point	84	Drop Point 84	46° 35.282' N	110° 25.082' W
Drop Point	85	Drop Point 85	46° 35.282' N	110° 25.082' W
Drop Point	86	Drop Point 86	46° 35.282' N	110° 25.082' W
Drop Point	87	Drop Point 87	46° 35.282' N	110° 25.082' W
Drop Point	88	Drop Point 88	46° 35.282' N	110° 25.082' W
Drop Point	89	Drop Point 89	46° 35.282' N	110° 25.082' W
Drop Point	90	Drop Point 90	46° 35.282' N	110° 25.082' W
Drop Point	91	Drop Point 91	46° 35.282' N	110° 25.082' W
Drop Point	92	Drop Point 92	46° 35.282' N	110° 25.082' W
Drop Point	93	Drop Point 93	46° 35.282' N	110° 25.082' W
Drop Point	94	Drop Point 94	46° 35.282' N	110° 25.082' W
Drop Point	95	Drop Point 95	46° 35.282' N	110° 25.082' W
Drop Point	96	Drop Point 96	46° 35.282' N	110° 25.082' W
Drop Point	97	Drop Point 97	46° 35.282' N	110° 25.082' W
Drop Point	98	Drop Point 98	46° 35.282' N	110° 25.082' W
Drop Point	99	Drop Point 99	46° 35.282' N	110° 25.082' W
Drop Point	100	Drop Point 100	46° 35.282' N	110° 25.082' W

