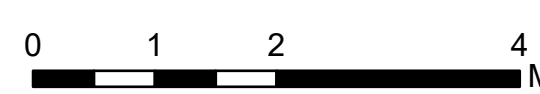


Air Operations All Fires Overview

Operational Period 8/26/2021

Divide Complex: Balsinger MT-HLF-005079
8,584 Acres @ 1547 8/20
Woods Creek - MT-HLF-000258
55,858 Acres @ 0051 8/23



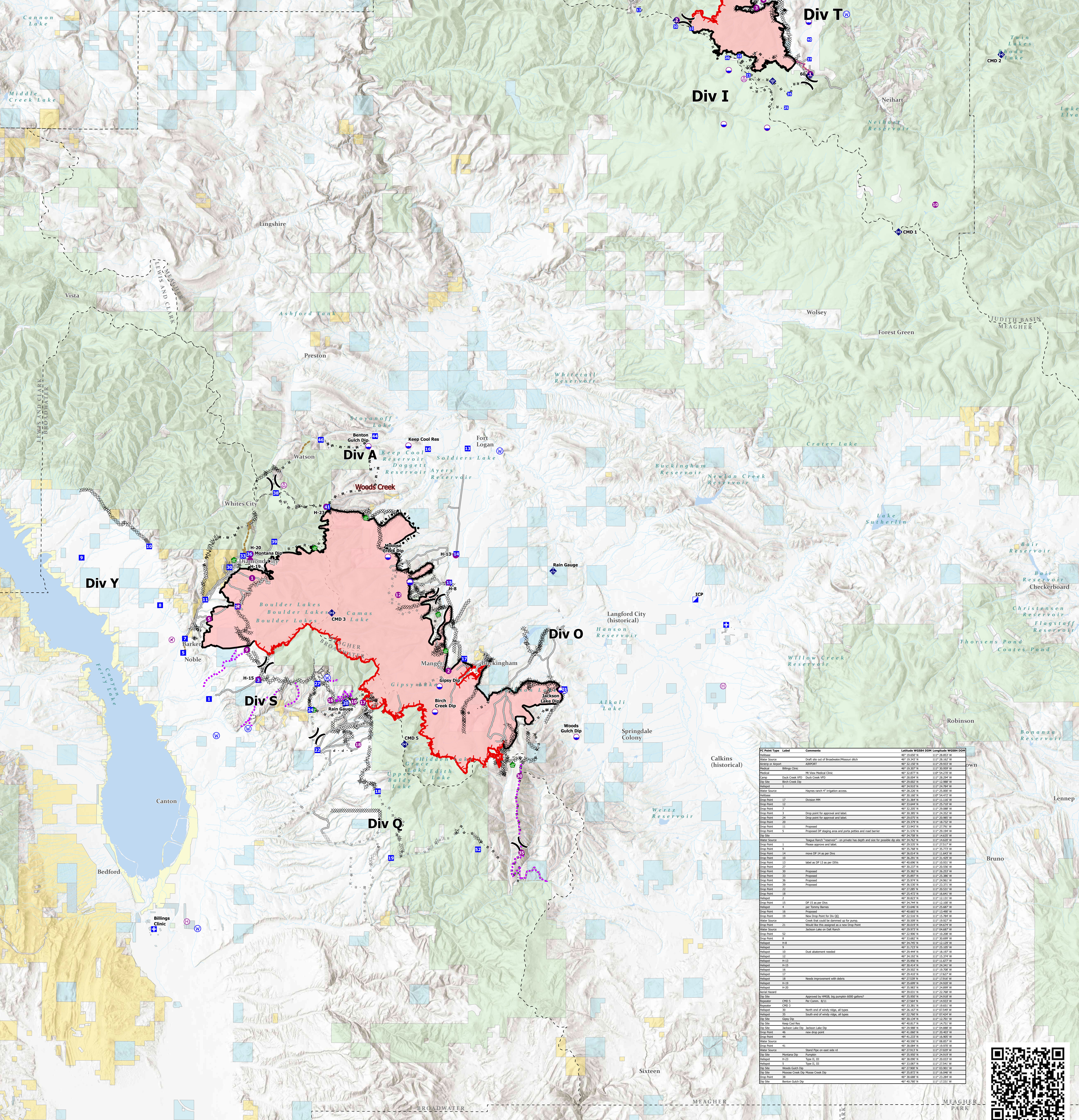
FC Point Type	Label	Comments	Latitude WGS84 DDM	Longitude WGS84 DDM	Elevation (Feet)
Camp	Show Down		46° 59.506' N	110° 41.824' W	
Dip Site			46° 59.627' N	110° 48.869' W	
Dip Site			46° 59.095' N	110° 54.387' W	
Dip Site		Orion Park Pumpkin Dip Site - (236,000 gallon pumpkins)	46° 54.538' N	110° 51.579' W	
Dip Site		Iron Mines Dip (2)	46° 57.490' N	110° 54.059' W	
Dip Site		Jump pumpkin	47° 00.910' N	110° 51.694' W	
Dip Point	10		46° 58.116' N	110° 53.378' W	
Dip Point	11	Drop Point 11, Balsinger trail parking area. Good parking area in the back, with cell phone reception.	46° 59.349' N	110° 56.473' W	
Dip Point	13		47° 00.162' N	110° 59.894' W	
Dip Point	20		46° 58.638' N	110° 54.157' W	
Dip Point	22	DP 22, wide "pullout" area at base of park, limited parking. Weak cell phone reception.	46° 58.118' N	110° 53.379' W	
Dip Point	23	DP 23, also a med size safety zone is S of DP.	46° 57.261' N	110° 52.788' W	
Dip Point	25	Drop zone 25, see lead READ keep all vehicles out of large park "meadow" SW of DP due to new client and many arch sites found in meadow.	46° 55.821' N	110° 50.337' W	
Dip Point	30		46° 59.427' N	110° 57.507' W	
Dip Point	35		46° 56.431' N	110° 50.124' W	
Dip Point	37		46° 57.971' N	110° 48.832' W	
Dip Point	40		46° 58.847' N	110° 48.820' W	
Dip Point	49		47° 02.697' N	110° 49.143' W	
Dip Point	52		47° 02.696' N	110° 50.030' W	
Dip Point	54		47° 03.677' N	110° 48.020' W	
Dip Point	55	Potential DP 55	47° 06.037' N	110° 50.572' W	
Helispot	1	Fence West Side	46° 57.307' N	110° 48.778' W	7012
Helispot	10		46° 55.897' N	110° 60.794' W	7500
Helispot	2		46° 59.712' N	110° 57.430' W	7500
Helispot	3		47° 00.256' N	110° 52.256' W	5883
Helispot	4		47° 00.615' N	110° 51.800' W	5779
Repeater	CHD 1	Prophary Peak	46° 59.293' N	110° 43.000' W	
Repeater	CHD 2	Big Baldy	46° 58.144' N	110° 36.393' W	
Water Source		Gravel sock for parker system around Barn and Tree Cooler	46° 59.963' N	110° 46.417' W	
Water Source	Camp Rotary		47° 01.680' N	110° 46.732' W	

- Aerial Hazard
- Airstrip or Airport
- Dip Site
- Helispot
- Helibase
- Division Break
- Medical
- Incident Command Post
- Drop Point
- Water Development or Draft Site
- Mobile Weather Unit
- Internet Access
- Repeater
- Water Source
- Completed Burnout
- Completed Dozer Line
- Completed Fuel Break
- Completed Hand Line
- Completed Mixed Construction Line
- Completed Plow Line
- Completed Road as Line

- Planned Dozer Line
- Planned Mixed Construction Line
- Planned Road as Line
- Planned Secondary Line
- Access or Improved Road
- Other
- Road Repair
- Route
- Fire Edge
- Contained Line
- Wildfire Daily Fire Perimeter
- Stream
- Ponds/Lakes
- County

Land Ownership

- Local Government
- State Government
- US Bureau of Land Management
- US Dept of Agriculture
- US Dept of Defense
- US Fish and Wildlife Service
- US Forest Service
- Other US Government



FC Point Type	Label	Comments	Latitude WGS84 DDM	Longitude WGS84 DDM
Water Source		Draft site out of Broadwater Reservoir ditch	46° 19.242' N	110° 28.162' W
Water Source		ADPNET	46° 22.288' N	110° 25.258' W
Water Source		Billings Clinic	46° 19.162' N	110° 30.558' W
Medical		18. Vets Medical Center	46° 32.877' N	110° 54.277' W
Water Source		Duck Creek Dip	46° 29.862' N	110° 13.962' W
Dip Site		Bark Creek Dip	46° 29.862' N	110° 13.962' W
Water Source		Haynes ranch #1 Engstrom access	46° 28.282' N	110° 25.882' W
Dip Site			46° 31.284' N	110° 11.184' W
Dip Point	17	Chickadee Hill	46° 31.284' N	110° 11.184' W
Dip Point	7		46° 32.286' N	110° 25.886' W
Dip Point	11	Drop point for approval and label	46° 29.288' N	110° 25.288' W
Dip Point	24	Drop point for approval and label	46° 29.053' N	110° 26.953' W
Dip Point	20	Proposed	46° 29.294' N	110° 18.294' W
Dip Point	11	Proposed	46° 31.526' N	110° 29.294' W
Dip Point	36	Proposed DP staging area and porta potties and road barrier	46° 29.294' N	110° 14.294' W
Water Source		Thayer Ranch "meadow" on prairie has depth and area for possible dip site	46° 34.762' N	110° 14.822' W
Dip Point	5	Prarie (depth and area)	46° 34.762' N	110° 14.822' W
Dip Point	9		46° 35.242' N	110° 25.242' W
Dip Point	14	meadow DP 14 on prairie	46° 35.242' N	110° 25.242' W
Dip Point	10		46° 36.280' N	110° 14.280' W
Dip Point	11		46° 36.280' N	110° 14.280' W
Dip Point	27	Label as DP 10 on prairie	46° 30.272' N	110° 20.552' W
Dip Point	33	Proposed	46° 30.272' N	110° 20.552' W
Dip Point	35	Proposed	46° 30.272' N	110° 20.552' W
Dip Point	36	Proposed	46° 30.272' N	110° 20.552' W
Dip Point	22	Proposed	46° 27.282' N	110° 15.552' W
Dip Point	18	Proposed	46° 29.282' N	110° 14.822' W
Water Source		DP 15 on prairie	46° 30.822' N	110° 13.122' W
Water Source		prairie Thayer Ranch	46° 33.842' N	110° 23.842' W
Dip Point	19	New Drop Point for DP-DQ	46° 22.242' N	110° 15.742' W
Dip Point	18	Creek line could be lowered up to 200'	46° 28.242' N	110° 15.242' W
Dip Point	23	meadow line from approved as a new Drop Point	46° 30.242' N	110° 16.242' W
Water Source		Jackson Lake on Oak Ranch	46° 29.972' N	110° 16.972' W
Dip Point	52		46° 29.972' N	110° 16.972' W
Dip Point	41		46° 30.482' N	110° 16.482' W
Dip Point	45		46° 30.482' N	110° 16.482' W
Dip Point	46		46° 30.482' N	110° 16.482' W
Dip Point	47		46° 30.482' N	110° 16.482' W
Dip Point	48		46° 30.482' N	110° 16.482' W
Dip Point	49		46° 30.482' N	110° 16.482' W
Dip Point	50		46° 30.482' N	110° 16.482' W
Dip Point	51		46° 30.482' N	110° 16.482' W
Dip Point	53		46° 30.482' N	110° 16.482' W
Dip Point	54		46° 30.482' N	110° 16.482' W
Dip Point	55		46° 30.482' N	110° 16.482' W
Dip Point	56		46° 30.482' N	110° 16.482' W
Dip Point	57		46° 30.482' N	110° 16.482' W
Dip Point	58		46° 30.482' N	110° 16.482' W
Dip Point	59		46° 30.482' N	110° 16.482' W
Dip Point	60		46° 30.482' N	110° 16.482' W
Dip Point	61		46° 30.482' N	110° 16.482' W
Dip Point	62		46° 30.482' N	110° 16.482' W
Dip Point	63		46° 30.482' N	110° 16.482' W
Dip Point	64		46° 30.482' N	110° 16.482' W
Dip Point	65		46° 30.482' N	110° 16.482' W
Dip Point	66		46° 30.482' N	110° 16.482' W
Dip Point	67		46° 30.482' N	110° 16.482' W
Dip Point	68		46° 30.482' N	110° 16.482' W
Dip Point	69		46° 30.482' N	110° 16.482' W
Dip Point	70		46° 30.482' N	110° 16.482' W
Dip Point	71		46° 30.482' N	110° 16.482' W
Dip Point	72		46° 30.482' N	110° 16.482' W
Dip Point	73		46° 30.482' N	110° 16.482' W
Dip Point	74		46° 30.482' N	110° 16.482' W
Dip Point	75		46° 30.482' N	110° 16.482' W
Dip Point	76		46° 30.482' N	110° 16.482' W
Dip Point	77		46° 30.482' N	110° 16.482' W
Dip Point	78		46° 30.482' N	110° 16.482' W
Dip Point	79		46° 30.482' N	110° 16.482' W
Dip Point	80		46° 30.482' N	110° 16.482' W
Dip Point	81		46° 30.482' N	110° 16.482' W
Dip Point	82		46° 30.482' N	110° 16.482' W
Dip Point	83		46° 30.482' N	110° 16.482' W
Dip Point	84		46° 30.482' N	110° 16.482' W
Dip Point	85		46° 30.482' N	110° 16.482' W
Dip Point	86		46° 30.482' N	110° 16.482' W
Dip Point	87		46° 30.482' N	110° 16.482' W
Dip Point	88		46° 30.482' N	110° 16.482' W
Dip Point	89		46° 30.482' N	110° 16.482' W
Dip Point	90		46° 30.482' N	110° 16.482' W
Dip Point	91		46° 30.482' N	110° 16.482' W
Dip Point	92		46° 30.482' N	110° 16.482' W
Dip Point	93		46° 30.482' N	110° 16.482' W
Dip Point	94		46° 30.482' N	110° 16.482' W
Dip Point	95		46° 30.482' N	110° 16.482' W
Dip Point	96		46° 30.482' N	110° 16.482' W
Dip Point	97		46° 30.482' N	110° 16.482' W
Dip Point	98		46° 30.482' N	110° 16.482' W
Dip Point	99		46° 30.482' N	110° 16.482' W
Dip Point	100		46° 30.482' N	110° 16.482' W

